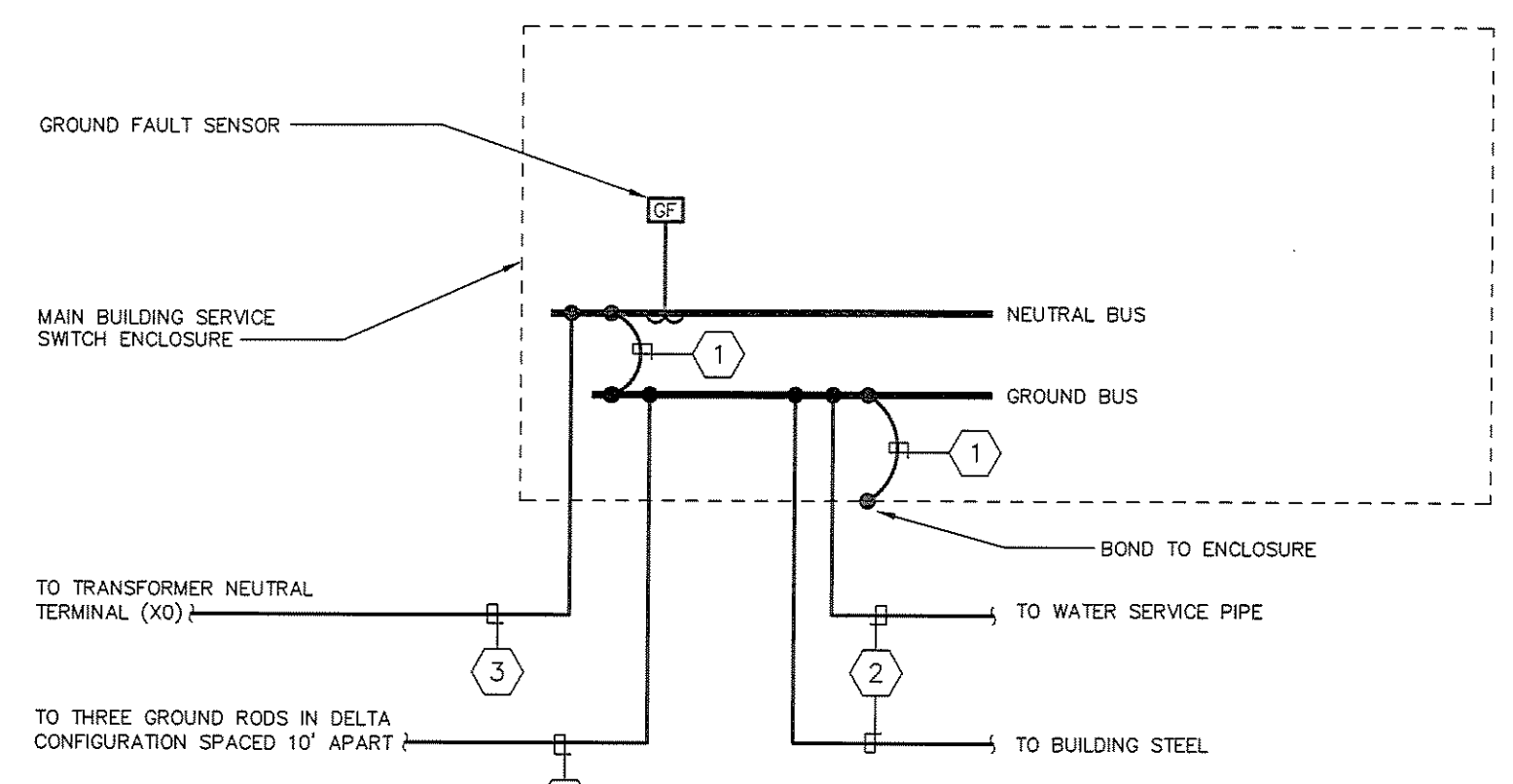


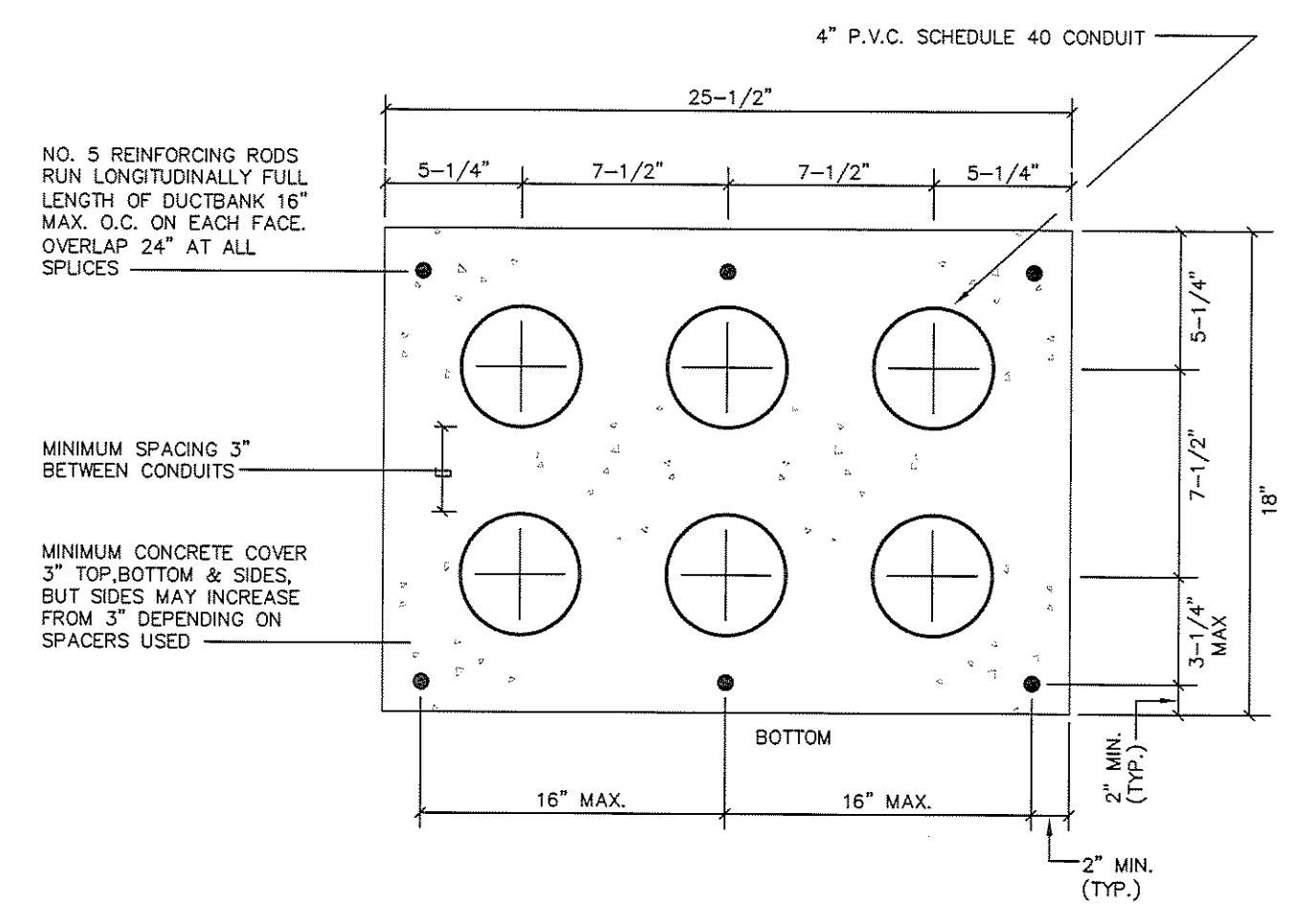
IF THIS SHEET IS NOT 24 X 36 IT IS A REDUCED SCALE PRINT - SCALE ACCORDINGLY

SCALE 1"=1'  
SCALE 3/4"=1'  
SCALE 1/2"=1'  
SCALE 1/4"=1'  
SCALE 1/8"=1'  
SCALE 1/16"=1'

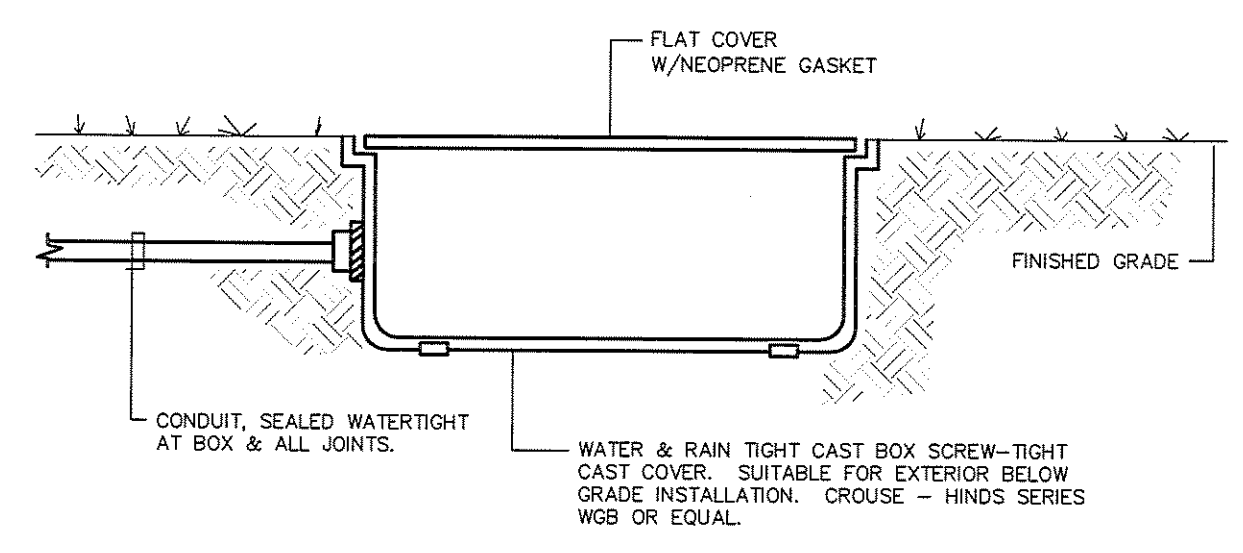


- ① MAIN BONDING JUMPER: #3/0 AWG
- ② GROUNDING ELECTRODE SYSTEM JUMPER CONDUCTOR: #3/0 AWG
- ③ GROUNDED (NEUTRAL) CONDUCTOR [REFER TO DISTRIBUTION ONE-LINE FOR SIZE]
- ④ SUPPLEMENTAL GROUNDING ELECTRODE BONDING JUMPER CONDUCTOR: #6 AWG

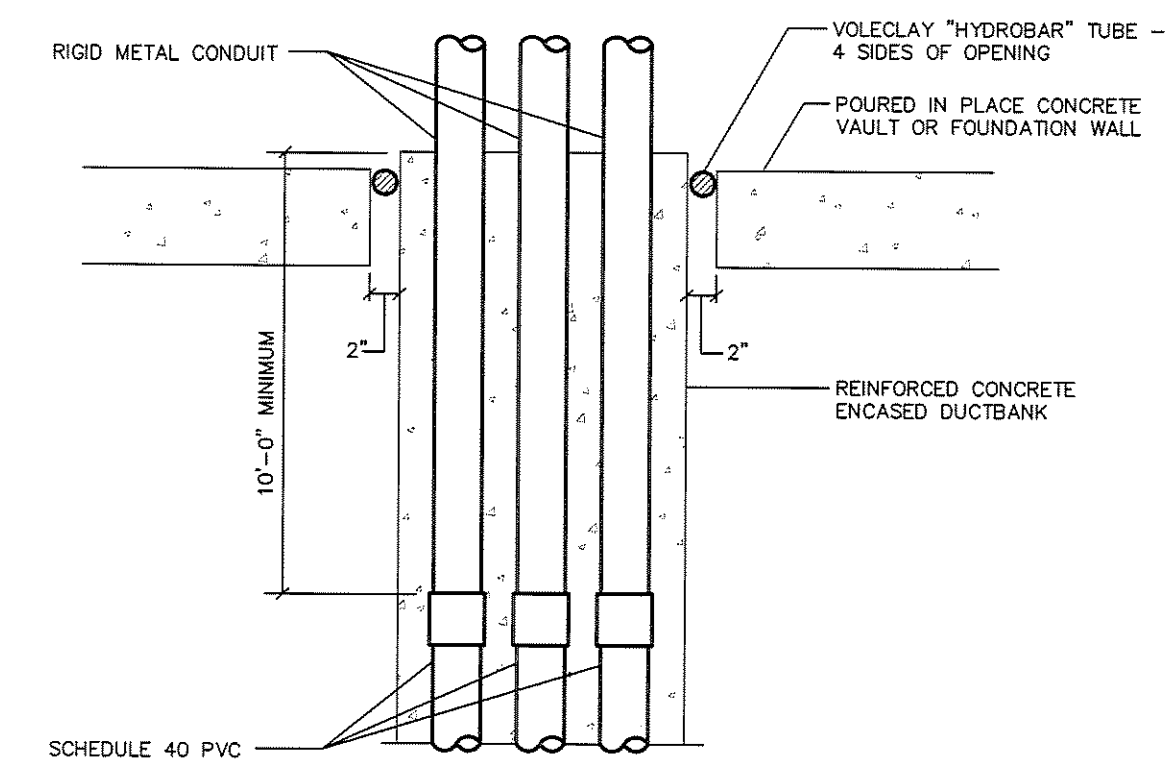
**MAIN SERVICE GROUNDING DETAIL**  
N.T.S.



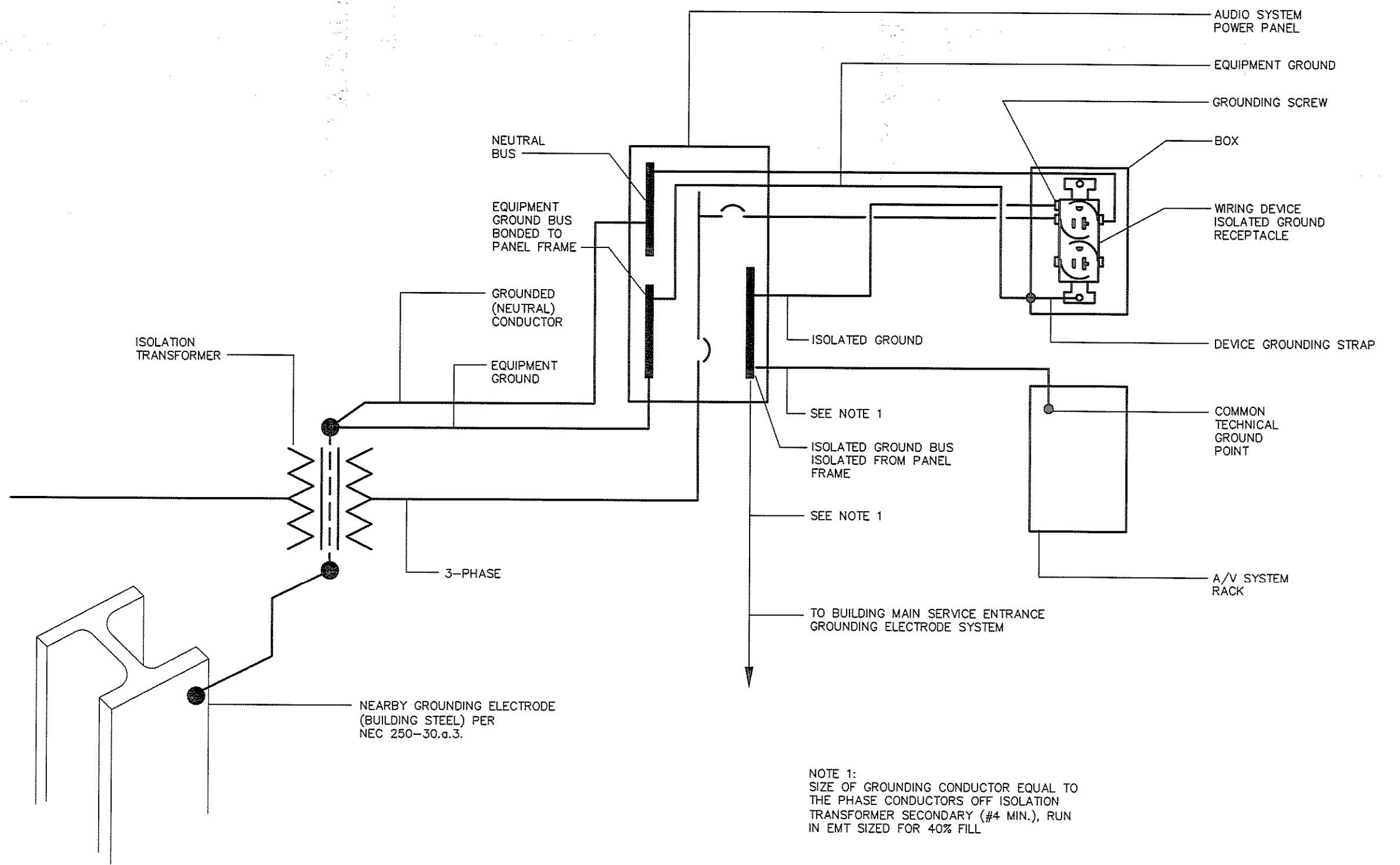
**DUCTBANK DETAIL - 4"**  
N.T.S.



**TYPICAL BELOW GRADE CAST JUNCTION BOX**  
N.T.S.

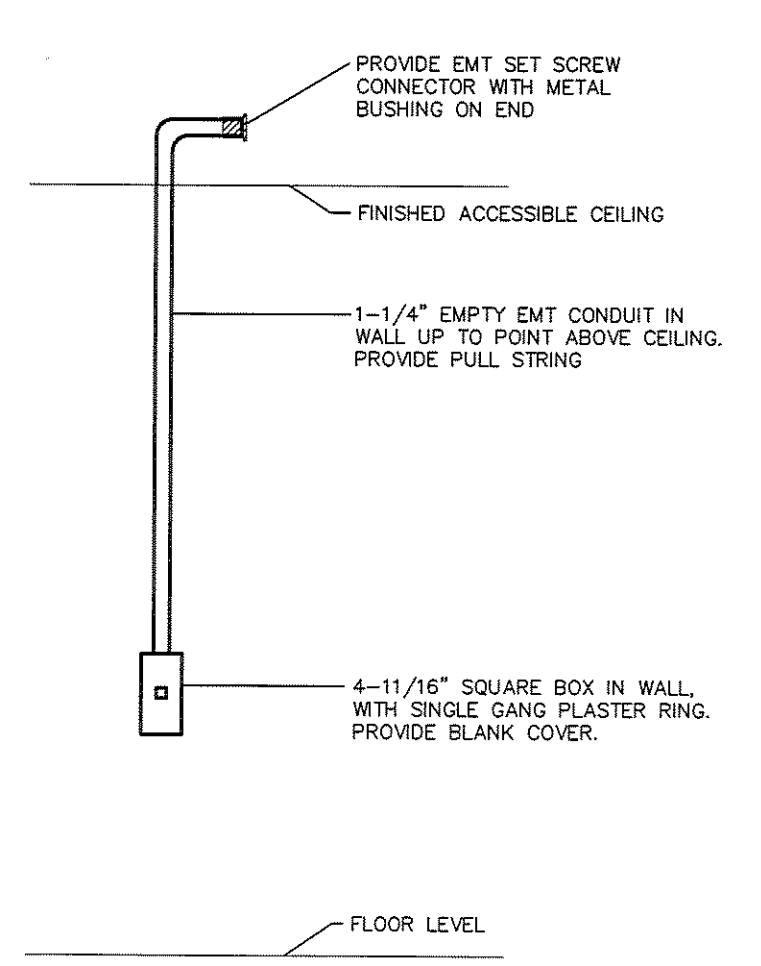


**DUCTBANK SEPARATION AND WATERPROOFING DETAIL**  
N.T.S.

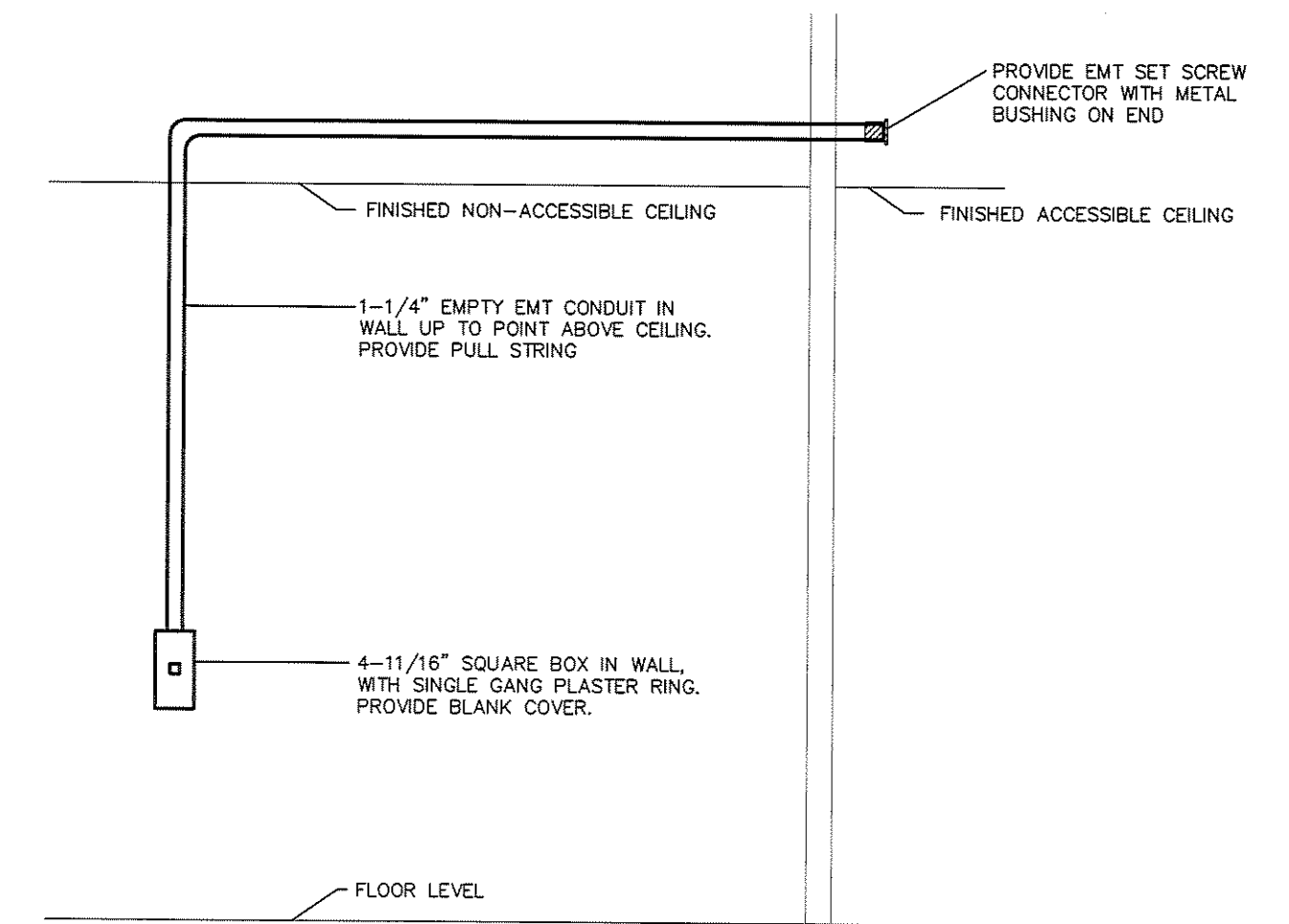


NOTE 1:  
SIZE OF GROUNDING CONDUCTOR EQUAL TO THE PHASE CONDUCTORS OFF ISOLATION TRANSFORMER SECONDARY (#4 MIN.), RUN IN EMT SIZED FOR 40% FILL

**AUDIO VISUAL SYSTEM POWER GROUNDING DETAIL**  
N.T.S.

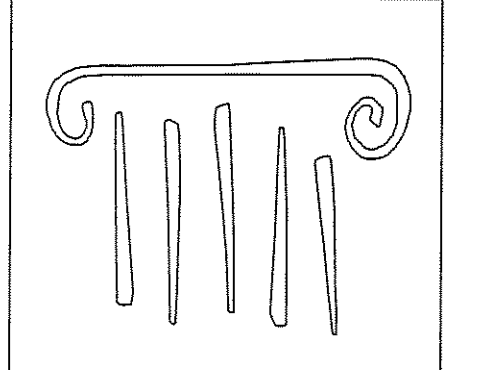


**FOR OUTLET LOCATED BELOW ACCESSIBLE CEILINGS**



**FOR OUTLET LOCATED BELOW NON-ACCESSIBLE CEILINGS**

**TYPICAL RACEWAY INSTALLATION DETAIL DATA, VOICE OR VIDEO OUTLET**  
N.T.S.



**PORT CITY ARCHITECTURE**

65 NEWBURY STREET  
PORTLAND, ME 04101  
207.761.9000  
fax: 207.761.2010  
lita@portcityarch.com

**VANZELM ENGINEERS**

VANZELM HEYWOOD & SHADFORD, INC.  
10 TALCOTT NOTCH FARMINGTON, CT 06032  
TEL: (860) 284-2900 FAX: (860) 284-2998

PROJECT NO.: 2007120.00

**BECKER**  
STRUCTURAL ENGINEERS, INC.

**SYTDesign CONSULTANTS**  
CIVIL, ENGINEERING & LANDSCAPE ARCHITECTURE

**ALLIED/COOK CONSTRUCTION**

**Faireau**  
ELECTRICAL

**Titan Mechanical Inc.**  
Design/Build Engineering - Mechanical Contracting

**UNIVERSITY OF NEW ENGLAND**

**COLLEGE OF PHARMACY**

716 STEVENS AVENUE,  
PORTLAND, ME

#	DATE	DESCRIPTION
		BID SET
	02/08/08	Date Issued
	06506	Project Number

SHEET NAME  
**ELECTRICAL DETAILS**

Drawn By  
AMM  
Checked By  
MER

**E5.0**

**BID SET - NOT FOR CONSTRUCTION**