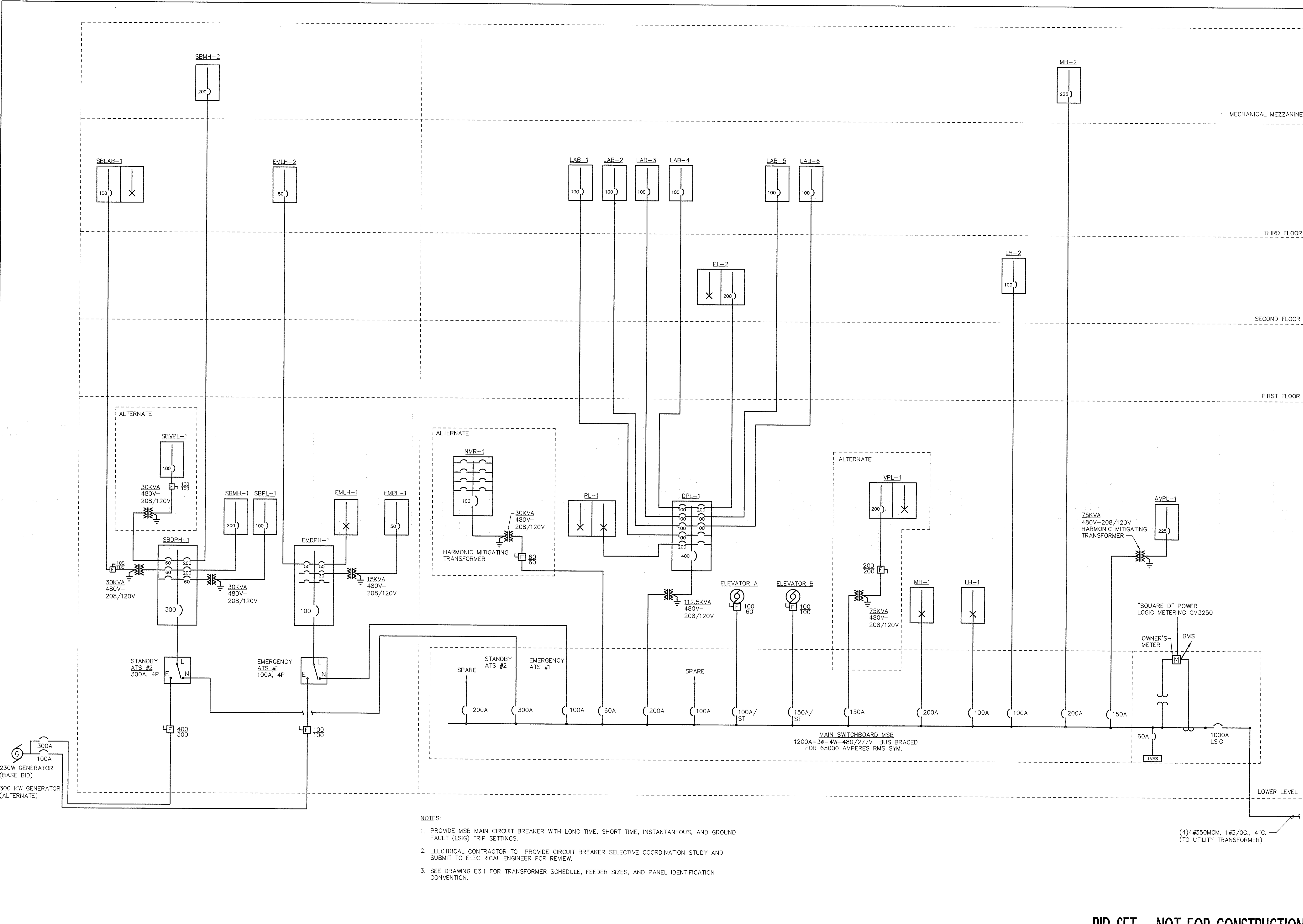


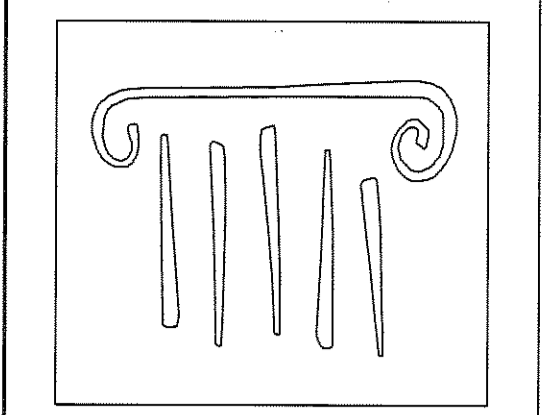
IF THIS SHEET IS NOT 24 X 36 IT IS A REDUCED SCALE PRINT - SCALE ACCORDINGLY

SCALE 1"=1'  
SCALE 3/4"=1'  
SCALE 1/2"=1'  
SCALE 1/4"=1'  
SCALE 1/8"=1'  
SCALE 1/16"=1'



- NOTES:
1. PROVIDE MSB MAIN CIRCUIT BREAKER WITH LONG TIME, SHORT TIME, INSTANTANEOUS, AND GROUND FAULT (LSIG) TRIP SETTINGS.
  2. ELECTRICAL CONTRACTOR TO PROVIDE CIRCUIT BREAKER SELECTIVE COORDINATION STUDY AND SUBMIT TO ELECTRICAL ENGINEER FOR REVIEW.
  3. SEE DRAWING E3.1 FOR TRANSFORMER SCHEDULE, FEEDER SIZES, AND PANEL IDENTIFICATION CONVENTION.

(4)4#350MCM, 1#3/0G, 4"C.  
(TO UTILITY TRANSFORMER)



**PORT CITY ARCHITECTURE**

65 NEWBURY STREET  
PORTLAND, ME 04101  
207.761.9000  
fax: 207.761.2010  
lita@portcityarch.com

**VANZELM ENGINEERS**

VANZELM HEYWOOD & SHADFORD, INC.  
10 TALCOTT NOTCH FARMINGTON, CT 06032  
TEL: (860) 384-3564 FAX: (860) 384-3598

PROJECT NO.: 2007120.00

**BECKER**  
Structural Engineers, Inc.

**SYTDesign CONSULTANTS**  
CIVIL, ENGINEERING & LANDSCAPE ARCHITECTURE

**ALLIED/COOK CONSTRUCTION**

**Favreau**  
Energy

**Titan Mechanical, Inc.**  
Design Build Engineering - Mechanical Contracting

**UNIVERSITY OF NEW ENGLAND**

**COLLEGE OF PHARMACY**

716 STEVENS AVENUE,  
PORTLAND, ME

#	DATE	DESCRIPTION
		BID SET
	02/08/08	Date Issued
	06506	Project Number

SHEET NAME

**ELECTRICAL POWER RISER DIAGRAM**

Drawn By  
AMM  
Checked By  
MER

**E3.0**

**BID SET - NOT FOR CONSTRUCTION**