

IF THIS SHEET IS NOT 24 X 36 IT IS A REDUCED SCALE PRINT - SCALE ACCORDINGLY

SCALE 1/4"=1'-0"

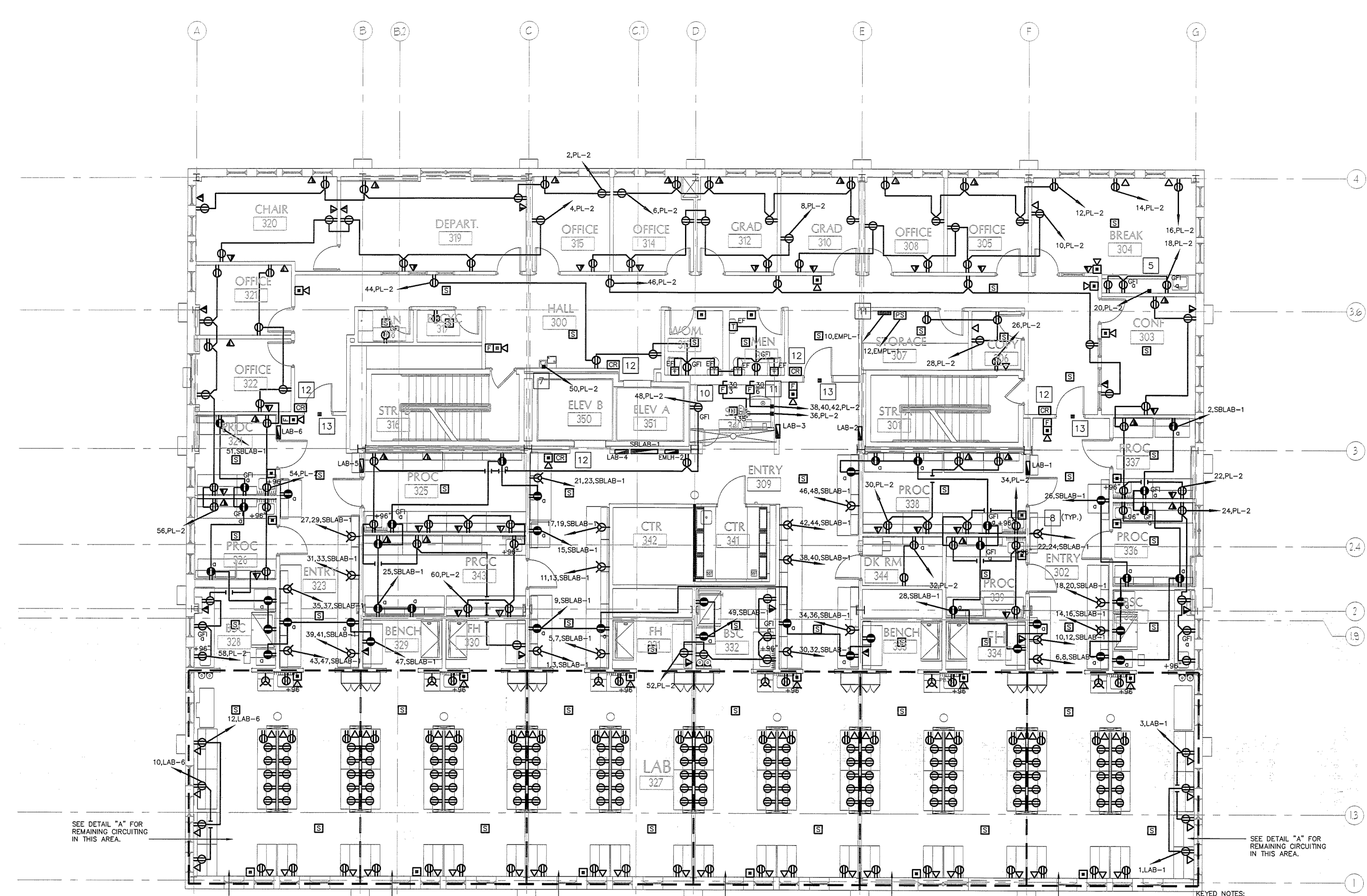
SCALE 1/2"=1'-0"

SCALE 3/4"=1'-0"

SCALE 1"=1'-0"

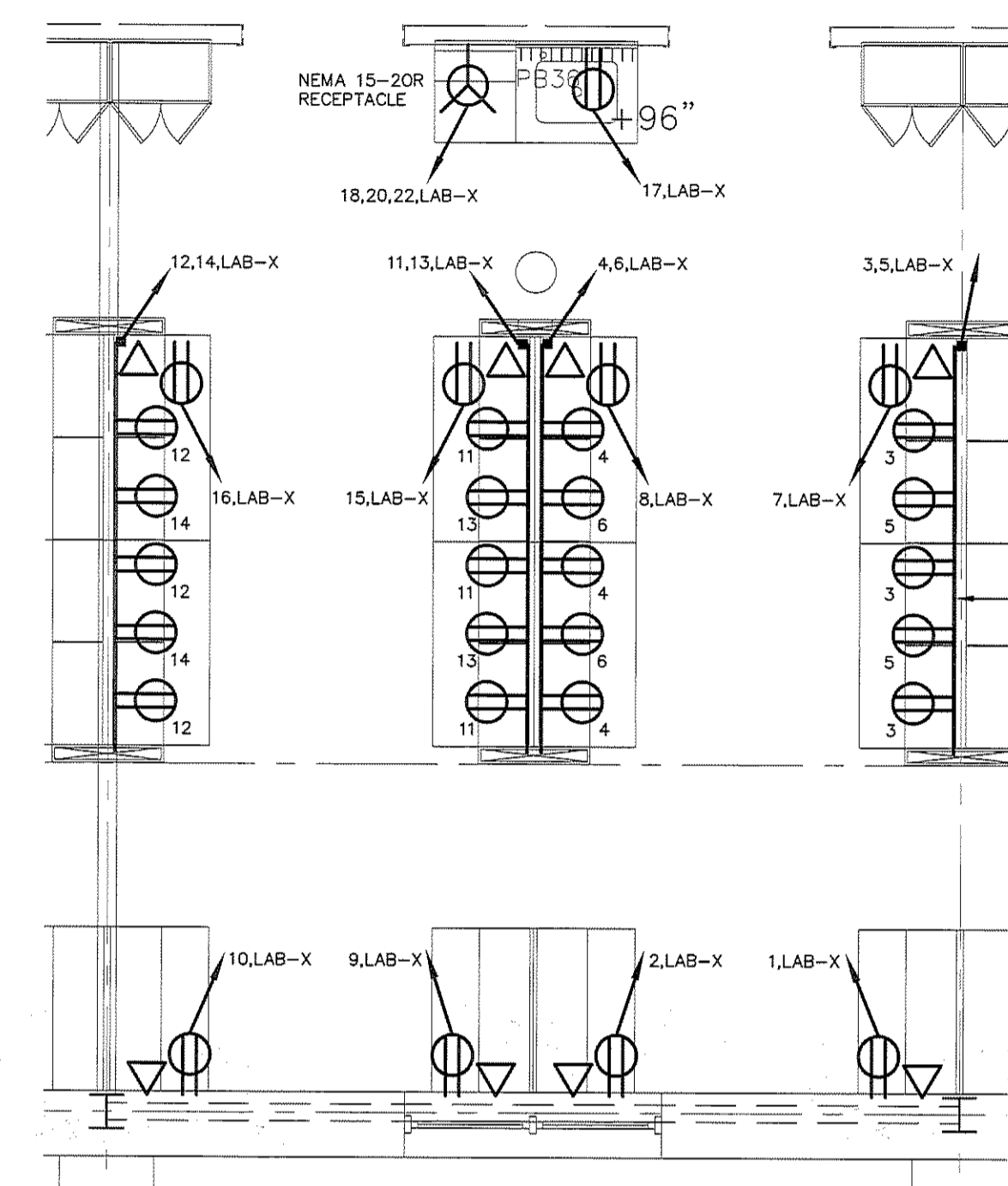
SCALE 1/8"=1'-0"

SCALE 1/16"=1'-0"



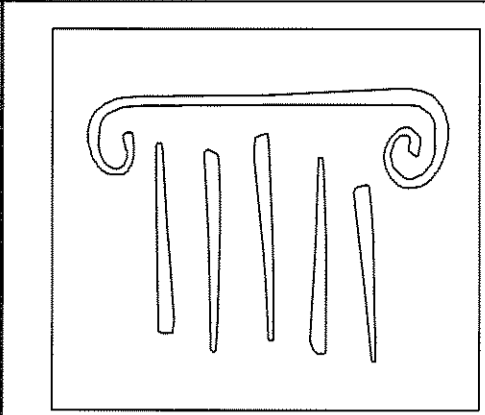
**1 THIRD FLOOR PLAN**  
SCALE 1/8" = 1'-0"

- KEYED NOTES:
1. POWER CONNECTION FOR ELECTRIC SHADES. COORDINATE WITH INSTALLER.
  2. POWER CONNECTION FOR MOTORIZED SCREEN.
  3. MEDIA CONTROL BOX FOR MOTORIZED SCREEN. COORDINATE INSTALLATION WITH INSTALLER.
  4. OVERHEAD PROJECTOR. COORDINATE LOCATION WITH INSTALLER.
  5. POWER CONNECTION ABOVE COUNTER FOR COFFEE URN.
  6. COORDINATE INSTALLATION WITH MILLWORK.
  7. POWER CONNECTION FOR DRINKING FOUNTAIN.
  8. NEMA 6-20R RECEPTACLE.
  9. POWER CONNECTION AND DISCONNECT SWITCH FOR STEAM STERILIZER CONTROL. COORDINATE LOCATION WITH INSTALLER.
  10. POWER CONNECTION AND DISCONNECT SWITCH FOR STEAM STERILIZER VACUUM PUMP. COORDINATE LOCATION WITH INSTALLER.
  11. CONTROLLER FOR ACCESS CONTROL SYSTEM. COORDINATE LOCATION WITH INSTALLER.
  12. INSTALL ONE 1/2" EMPTY CONDUIT FROM CARD READER/POWER SUPPLY TO ACCESS CONTROL SYSTEM CONTROLLER IN STORAGE ROOM 307. PROVIDE PULL STRING IN CONDUIT.
  13. POWER CONNECTION FROM DOOR CONTROL POWER SUPPLY IN STORAGE ROOM 307. COORDINATE LOCATION WITH INSTALLER.



**A TYPICAL LAB POWER LAYOUT**  
Scale: 1/4" = 1' - 0"

ALUMINUM SINGLE-CHANNEL PREWIRED RACEWAY WITH DUPLEX RECEPTACLES AS SHOWN. WIREMOLD AL3000 OR EQUAL (TYP.)



**PORT CITY ARCHITECTURE**

65 NEWBURY STREET  
PORTLAND, ME 04101  
207.761.9000  
fax: 207.761.2010  
lita@portcityarch.com

**VANZELM ENGINEERS**

VANZELM HEYWOOD & SHADFORD, INC.  
19 TALCOTT NOTCH FARMINGTON, CT 06032  
TEL: 860.334.5064 FAX: 860.334.0098

PROJECT NO.: 2007120.00

**BECKER**  
structural engineers, inc.

**SYTDesign**  
CONSULTANTS  
CIVIL ENGINEERING & LANDSCAPE ARCHITECTURE

**ALLIED/COOK**  
CONSTRUCTION

**Favreau**  
ELECTRICAL

Titan Mechanical, Inc.  
Design/Build Engineering - Mechanical Contracting

**UNIVERSITY OF NEW ENGLAND**

**COLLEGE OF PHARMACY**

716 STEVENS AVENUE,  
PORTLAND, ME

#	DATE	DESCRIPTION
		BID SET
	01/08/08	Date Issued
	06506	Project Number

SHEET NAME  
**ELECTRICAL POWER PLAN - THIRD FLOOR**

Drawn By  
AMM

Checked By  
MER

**EP1.4**

**BID SET - NOT FOR CONSTRUCTION**