

PORT CITY ARCHITECTURE

65 NEWBURY STREET
PORTLAND, ME 04101
207.761.9000
fax: 207.761.2010
lita@portcityarch.com

VANZELM
ENGINEERS

VANZELM HEYWOOD & SHADFORD, INC.
10 TALCOTT NOTCH FARMINGTON, CT 06032
TEL: (860) 284-2064 FAX: (860) 284-2098

PROJECT NO.: 2007120.00

BECKER
Structural engineers, Inc.

SYTDesign
CONSULTANTS
CIVIL ENGINEERING & LANDSCAPE ARCHITECTURE

ALLIED/COOK
CONSTRUCTION

Favreau
GROUP

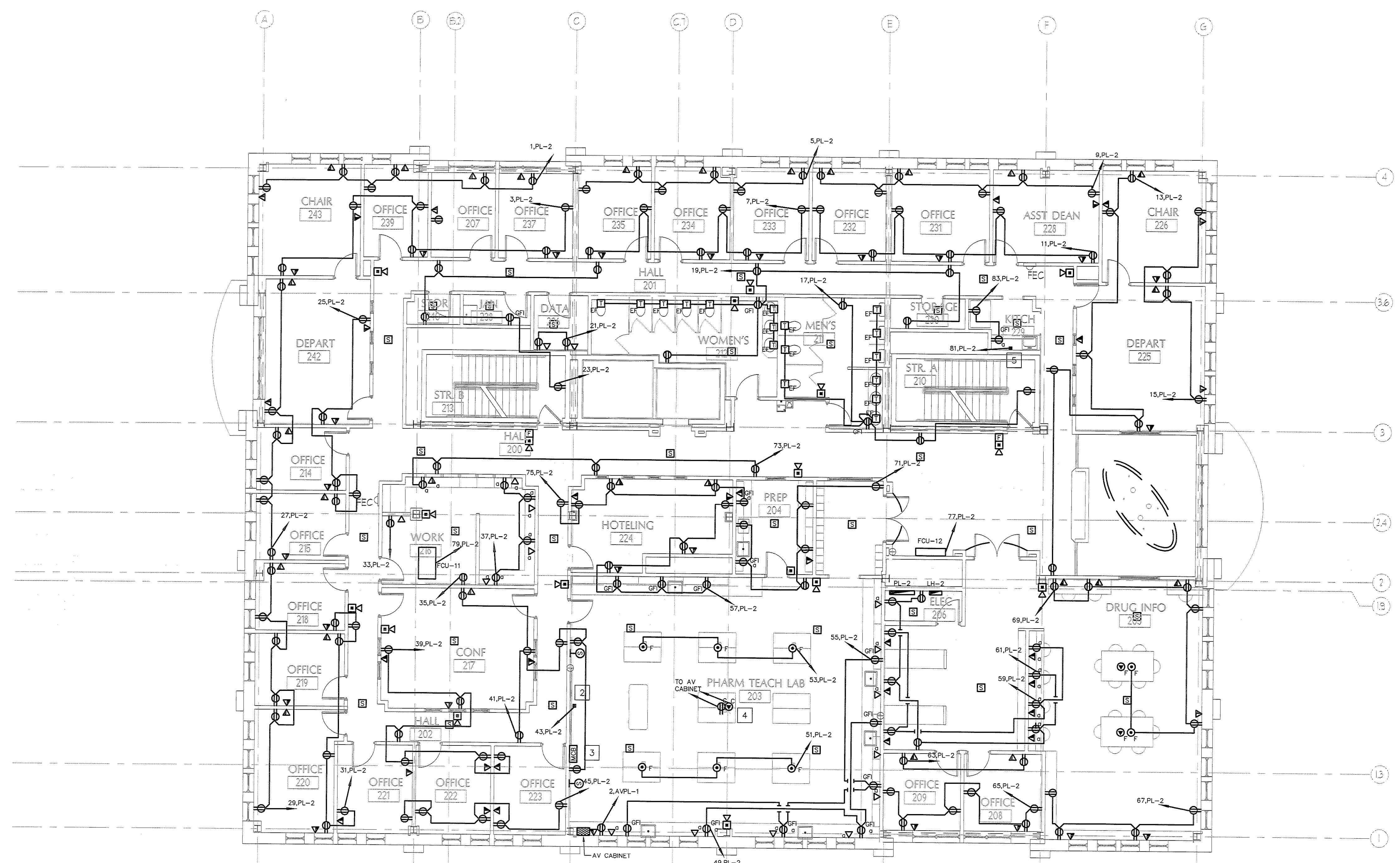
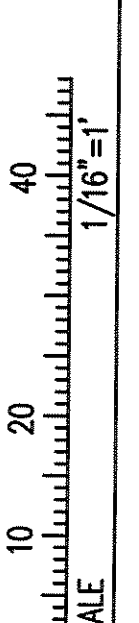
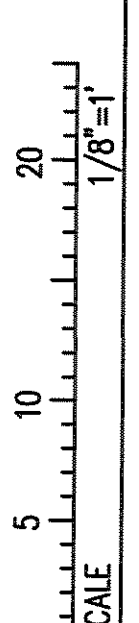
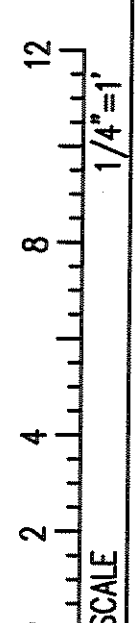
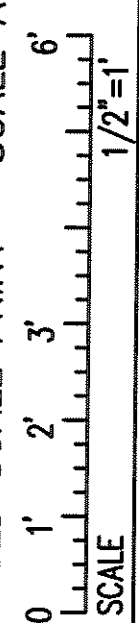
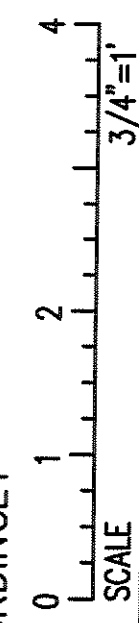
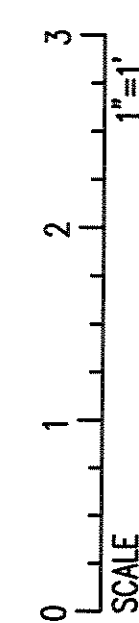
Titan Mechanical, Inc.
Mechanical Engineering - Mechanical Consulting

UNIVERSITY OF NEW ENGLAND

COLLEGE OF PHARMACY

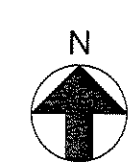
716 STEVENS AVENUE,
PORTLAND, ME

IF THIS SHEET IS NOT 24 X 36 IT IS A REDUCED SCALE PRINT - SCALE ACCORDINGLY



- KEYED NOTES:
1. POWER CONNECTION FOR ELECTRIC SHADES. COORDINATE WITH INSTALLER.
 2. POWER CONNECTION FOR MOTORIZED SCREEN. COORDINATE WITH INSTALLER.
 3. MEDIA CONTROL BOX FOR MOTORIZED SCREEN. COORDINATE INSTALLATION WITH INSTALLER.
 4. POWER AND DATA CONNECTIONS FOR OVERHEAD PROJECTOR. COORDINATE LOCATION WITH INSTALLER. 1/2" CONDUIT FOR EACH.
 5. POWER CONNECTION FOR COFFEE URN.

1 SECOND FLOOR PLAN
SCALE: 1/8" = 1'-0"



BID SET - NOT FOR CONSTRUCTION

DATE	DESCRIPTION
	BID SET
Date Issued	02/08/08
Project Number	06506

SHEET NAME
ELECTRICAL
POWER PLAN -
SECOND FLOOR

Drawn By:
AMM
Checked By:
MER

EP1.3