

PORT CITY ARCHITECTURE

65 NEWBURY STREET
 PORTLAND, ME 04101
 207.761.9000
 fax: 207.761.2010
 lita@portcityarch.com

VANZELM ENGINEERS

VANZELM HEYWOOD & SHADFORD, INC.
 10 TALCOTT NOTCH FARMINGTON, CT 06032
 TEL: (860) 284-3064 FAX: (860) 284-3068

PROJECT NO.: 2007120.00

BECKER structural engineers, inc.

SYTDDesign CONSULTANTS
 CIVIL ENGINEERING & LANDSCAPE ARCHITECTURE

ALLIED/COOK CONSTRUCTION

Favreau ELECTROB

Titan Mechanical, Inc.
 Design-Build Engineering - Mechanical Contracting

UNIVERSITY OF NEW ENGLAND

COLLEGE OF PHARMACY

716 STEVENS AVENUE,
 PORTLAND, ME

#	DATE	DESCRIPTION
		BID SET
	01/08/08	Date Issued
	06506	Project Number

Date Issued: 01/08/08

Project Number: 06506

SHEET NAME
ELECTRICAL POWER PLAN - LOWER LEVEL - ALTERNATE

Drawn By AMM	Checked By MER	EP1.1

BID SET - NOT FOR CONSTRUCTION



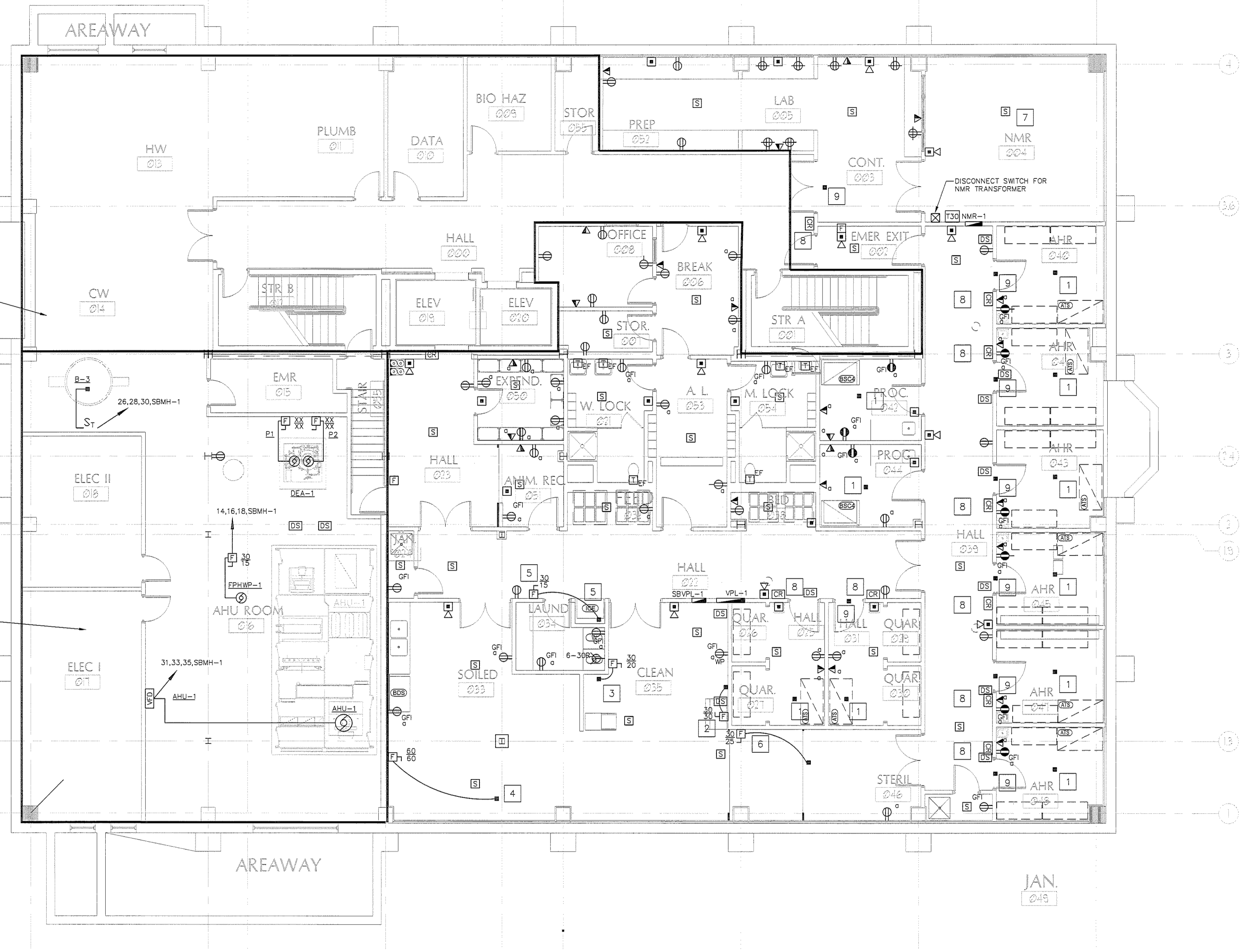
COPYRIGHT: Reuse or reproduction of the contents of this document is not permitted without written permission of PORT CITY ARCHITECTURE PA

IF THIS SHEET IS NOT 24 X 36 IT IS A REDUCED SCALE PRINT - SCALE ACCORDINGLY

SCALE 1"=1'
 SCALE 3/4"=1'
 SCALE 1/2"=1'
 SCALE 1/4"=1'
 SCALE 1/8"=1'
 SCALE 1/16"=1'

REFER TO DWG EP1.0 FOR ELECTRICAL EQUIPMENT IN THIS AREA

ONLY ADDITIONAL EQUIPMENT REQUIRED FOR THE ALTERNATE BID ARE SHOWN. FOR ALL OTHER EQUIPMENT, REFER TO DWG EP1.0 FOR ELECTRICAL EQUIPMENT IN THIS AREA



1 LOWER LEVEL POWER PLAN - ALTERNATE
 Scale: 1/8"=1'-0"

- NOTES:
1. CEILING MOUNTED CORD WITH 20A/120V TWIST-LOCK RECEPTACLE WITH WATERTIGHT COVER FOR ANNUAL TRANSFORMER STATION. RECEPTACLE END OF CORD TO BE AT 7'-0" AFF.
 2. POWER CONNECTION AND DISCONNECT SWITCH (NEMA 3R ENCLOSURE) FOR BEDDING DISPENSER. COORDINATE WITH INSTALLER.
 3. POWER CONNECTION AND DISCONNECT SWITCH (NEMA 3R ENCLOSURE) FOR BOTTLE FILLER. COORDINATE WITH INSTALLER.
 4. POWER CONNECTION AND DISCONNECT SWITCH (NEMA 3R ENCLOSURE) FOR CAGE AND RACK WASHER. COORDINATE WITH INSTALLER.
 5. POWER CONNECTION AND DISCONNECT SWITCH FOR ICE FLAKER. COORDINATE WITH INSTALLER.
 6. POWER CONNECTION AND DISCONNECT SWITCH (NEMA 3R ENCLOSURE) FOR LARGE STEAM STERILIZER. COORDINATE WITH INSTALLER.
 7. DEPENDING ON NMR MODEL ACTUALLY INSTALLED, THIS ROOM MAY HAVE TWELVE 15A, 120V DUPLEX RECEPTACLES, ONE 20A, 208V RECEPTACLE, AND THREE 30A, 208V RECEPTACLES. ALL RECEPTACLES WILL BE SERVED FROM PANEL NMR-1.
 8. INSTALL ONE 1/2" EMPTY CONDUIT FROM CARD READER/POWER SUPPLY TO ACCESS CONTROL SYSTEM CONTROLLER IN DATA ROOM 010. PROVIDE PULL STRING IN CONDUIT. SEE TYPICAL ACCESS CONTROL WIRING DETAIL ON DRAWING E.K.X.
 9. POWER CONNECTION FOR DOOR CONTROL POWER SUPPLY. COORDINATE LOCATION WITH INSTALLER.