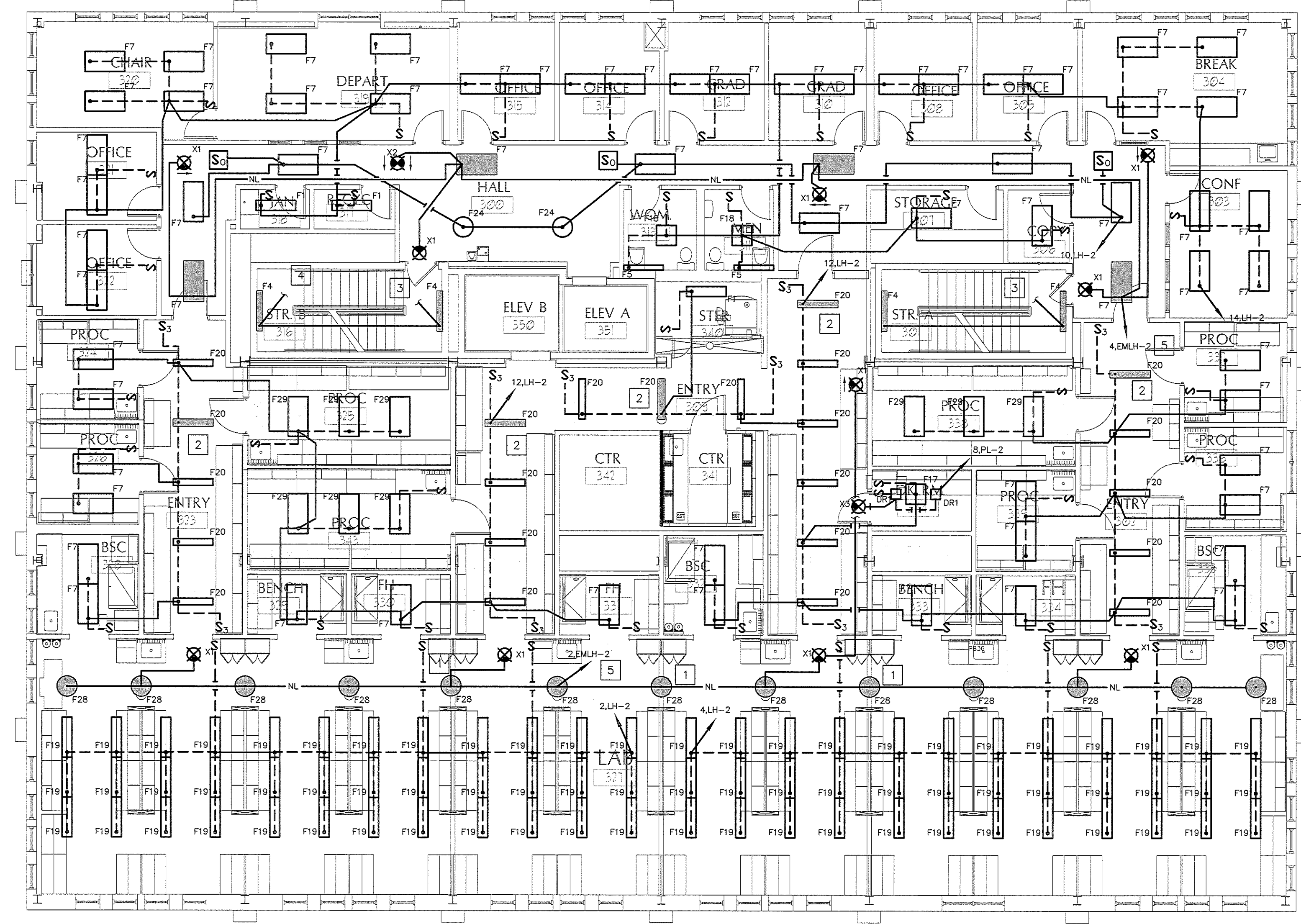
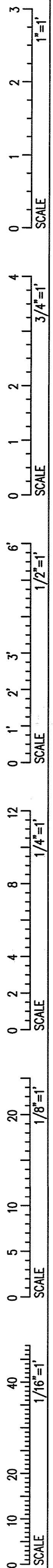
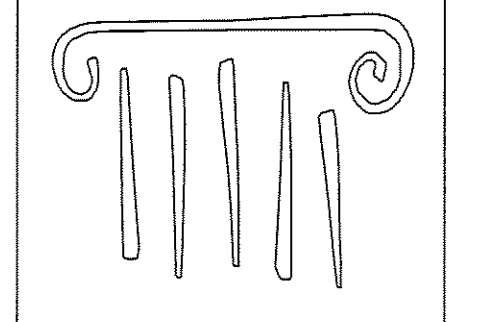


IF THIS SHEET IS NOT 24 X 36 IT IS A REDUCED SCALE PRINT - SCALE ACCORDINGLY



1 THIRD FLOOR LIGHTING PLAN
Scale: 1/8"=1'-0"

- KEYED NOTES:
1. FIXTURE TO BE REMOVED IF LAB DIVIDING PARTITION IS INSTALLED. TYPICAL OF 3.
 2. THIS LIGHT FIXTURE TO HAVE AN EMERGENCY BATTERY PACK.
 3. DOWN TO LAST LIGHT FIXTURE ON CIRCUIT. SEE SHEET EL1.3.
 4. UP TO NEXT LIGHT FIXTURE ON CIRCUIT. SEE SHEET EL1.5.
 5. NIGHT LIGHTING/EMERGENCY CIRCUIT.



PORT CITY ARCHITECTURE

65 NEWBURY STREET
PORTLAND, ME 04101
207.761.9000
fax: 207.761.2010
lita@portcityarch.com

VANZELM
ENGINEERS

VANZELM HEYWOOD & SHADFORD, INC.
10 TALCOTT NOTCH FARMINGTON, CT 06032
TEL: (860) 384-5966 FAX: (860) 384-5968

PROJECT NO.: 2007120.00

BECKER
structural engineers, inc.

SYTDesign
CONSULTANTS
CIVIL ENGINEERING & LANDSCAPE ARCHITECTURE

ALLIED/COOK
CONSTRUCTION

Fairreau
ENGINEERS

Titan Mechanical, Inc.
Design-Build Engineering - Mechanical Contractors

UNIVERSITY OF NEW ENGLAND

COLLEGE OF PHARMACY

716 STEVENS AVENUE,
PORTLAND, ME

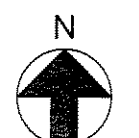
#	DATE	DESCRIPTION
		BID SET
	02/08/08	Date Issued
	06506	Project Number

SHEET NAME
ELECTRICAL LIGHTING PLAN - THIRD FLOOR

Drawn By
AMM

Checked By
MER

EL1.4



BID SET - NOT FOR CONSTRUCTION