

PORT CITY ARCHITECTURE

65 NEWBURY STREET
 PORTLAND, ME 04101
 207.761.9000
 fax: 207.761.2010
 lita@portcityarch.com

VANZELM ENGINEERS

VANZELM HEYWOOD & SHADFORD, INC.
 18 TALCOTT NOTCH FARMINGTON, CT 06032
 TEL: (860) 284-5064 FAX: (860) 284-5068

PROJECT NO.: 2007120.00

BECKER
 structural engineers, inc.

SYTDesign
 CONSULTANTS
 CIVIL ENGINEERING & LANDSCAPE ARCHITECTURE

ALLIED/COOK
 CONSTRUCTION

Faireau

Titan Mechanical, Inc.
 Design-Build Engineering - Mechanical Contracting

UNIVERSITY OF NEW ENGLAND

COLLEGE OF PHARMACY

716 STEVENS AVENUE,
 PORTLAND, ME

IF THIS SHEET IS NOT 24 X 36 IT IS A REDUCED SCALE PRINT - SCALE ACCORDINGLY

SCALE 1"=1'-0"

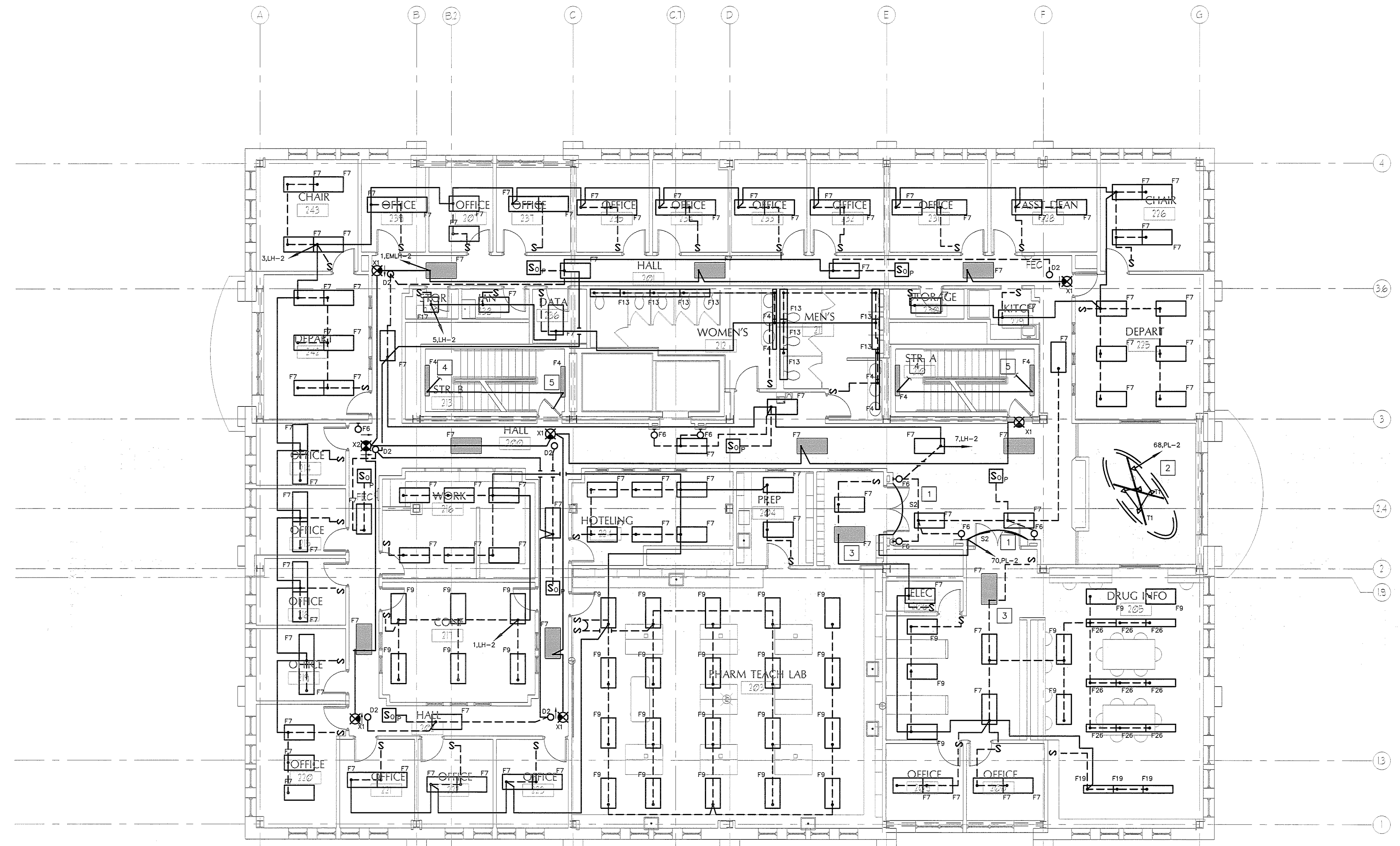
SCALE 3/4"=1'-0"

SCALE 1/2"=1'-0"

SCALE 1/4"=1'-0"

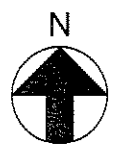
SCALE 1/8"=1'-0"

SCALE 1/16"=1'-0"



1 SECOND FLOOR LIGHTING PLAN
 Scale: 1/8"=1'-0"

- KEYED NOTES:**
- LED ROPE LIGHT INSTALLED ABOVE SIGN. TYPICAL 5 LOCATIONS.
 - TRACK LIGHTING. COORDINATE WITH INSTALLER.
 - INSTALL EMERGENCY BATTERY PACK.
 - UP TO NEXT STAIRWELL LIGHT FIXTURE ON CIRCUIT.
 - FROM LOWER STAIRWELL LIGHT FIXTURE ON CIRCUIT.



BID SET - NOT FOR CONSTRUCTION

#	DATE	DESCRIPTION
		BID SET
	02/08/08	Date Issued
	06506	Project Number

SHEET NAME
ELECTRICAL LIGHTING PLAN - SECOND FLOOR

Drawn By
 AMM

Checked By
 MER

EL1.3