

**PORT CITY ARCHITECTURE**

65 NEWBURY STREET  
 PORTLAND, ME 04101  
 207.761.9000  
 fax: 207.761.2010  
 lita@portcityarch.com

**VANZELM ENGINEERS**

VANZELM HEYWOOD & SHADFORD, INC.  
 19 TALCOTT NOTCH FARMINGTON, CT 06032  
 TEL: (860) 384-3564 FAX: (860) 384-3566

PROJECT NO.: 2007120.00

**BECKER**  
 structural engineers, inc.

**SYTDesign CONSULTANTS**  
 CIVIL ENGINEERING & LANDSCAPE ARCHITECTURE

**ALLIED/COOK CONSTRUCTION**

**Favreau**  
 GROUP

**Titan Mechanical, Inc.**  
 Design Build Engineering - Mechanical Contracting

**UNIVERSITY OF NEW ENGLAND**

**COLLEGE OF PHARMACY**

716 STEVENS AVENUE,  
 PORTLAND, ME

IF THIS SHEET IS NOT 24 X 36 IT IS A REDUCED SCALE PRINT - SCALE ACCORDINGLY

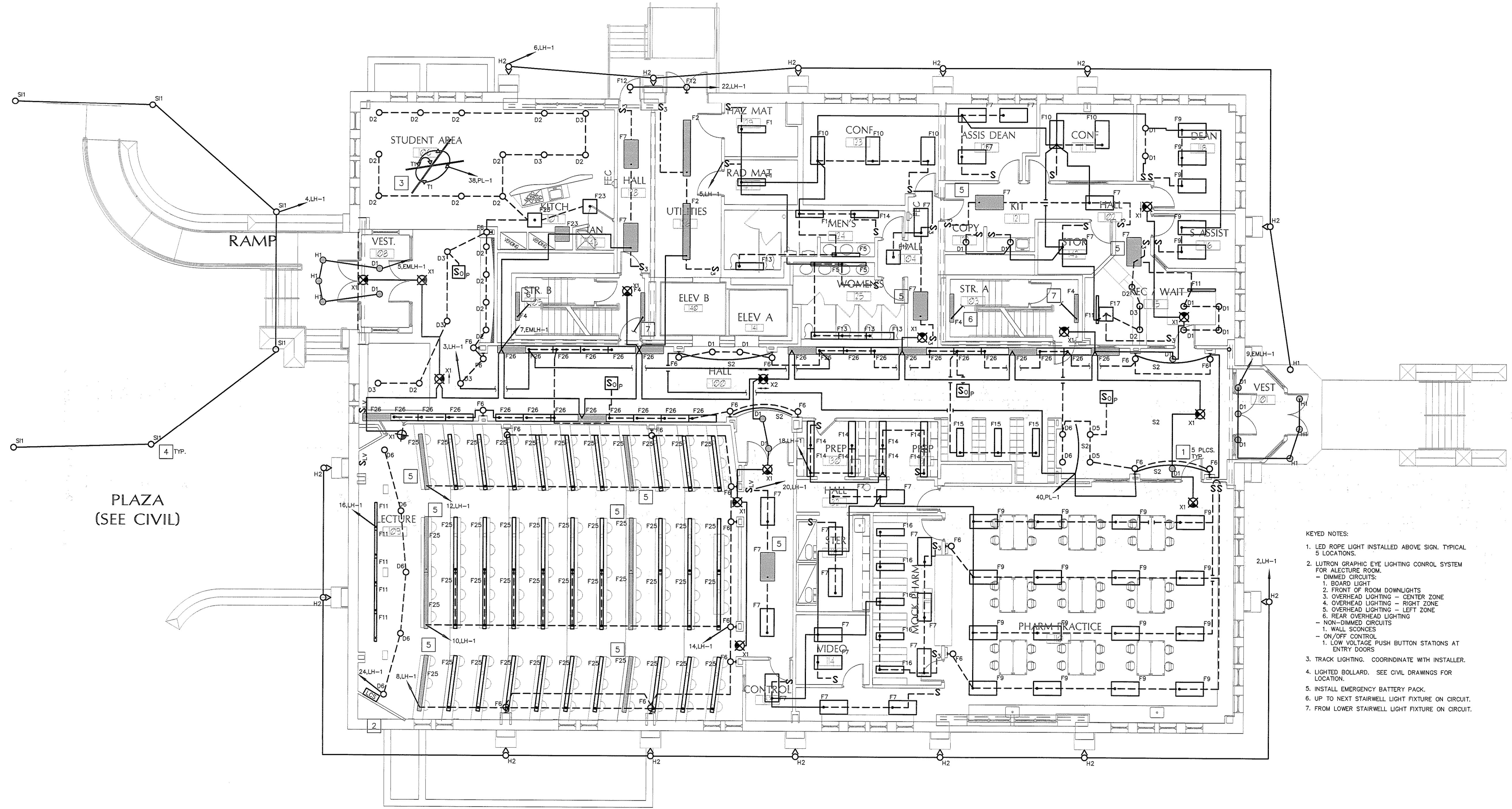
0 1 2 3  
 SCALE 1"=1'

0 1 2 3 4  
 SCALE 3/4"=1'

0 1 2 3 4 5 6  
 SCALE 1/2"=1'

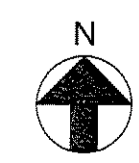
0 1 2 3 4 5 6 7 8 9 10 12  
 SCALE 1/4"=1'

0 20 40  
 SCALE 1/8"=1'



- KEYED NOTES:**
- LED ROPE LIGHT INSTALLED ABOVE SIGN. TYPICAL 5 LOCATIONS.
  - LUTRON GRAPHIC EYE LIGHTING CONTROL SYSTEM FOR LECTURE ROOM.
    - DIMMED CIRCUITS
      - BOARD LIGHT
      - FRONT OF ROOM DOWNLIGHTS
      - OVERHEAD LIGHTING - CENTER ZONE
      - OVERHEAD LIGHTING - RIGHT ZONE
      - OVERHEAD LIGHTING - LEFT ZONE
      - REAR OVERHEAD LIGHTING
    - NON-DIMMED CIRCUITS
      - WALL SCONES
      - ON/OFF CONTROL
  - TRACK LIGHTING. COORDINATE WITH INSTALLER.
  - LIGHTED BOLLARD. SEE CIVIL DRAWINGS FOR LOCATION.
  - INSTALL EMERGENCY BATTERY PACK.
  - UP TO NEXT STAIRWELL LIGHT FIXTURE ON CIRCUIT.
  - FROM LOWER STAIRWELL LIGHT FIXTURE ON CIRCUIT.

**1 FIRST FLOOR LIGHTING PLAN**  
 Scale: 1/8"=1'-0"



**BID SET - NOT FOR CONSTRUCTION**

| # | DATE     | DESCRIPTION    |
|---|----------|----------------|
|   |          | BID SET        |
|   | 01/08/08 | Date Issued    |
|   | 06506    | Project Number |

| SHEET NAME                             |     |
|--|-----|
| ELECTRICAL LIGHTING PLAN - FIRST FLOOR |     |
| Drawn By                               | AMM |
| Checked By                             | MER |
| <b>EL1.2</b>                           |     |