

**PORT CITY ARCHITECTURE**

65 NEWBURY STREET  
 PORTLAND, ME 04101  
 207.761.9000  
 fax: 207.761.2010  
 lita@portcityarch.com

**VANZELM ENGINEERS**

VANZELM HEYWOOD & SHADFORD, INC.  
 10 TALCOTT NOTCH FARMINGTON, CT 06032  
 TEL: (860) 284-2066 FAX: (860) 284-2066  
 PROJECT NO.: 2007120.00

**BECKER structural engineers, inc.**

**SYTDesign CONSULTANTS**  
 CIVIL ENGINEERING & LANDSCAPE ARCHITECTURE

**ALLIED/COOK CONSTRUCTION**

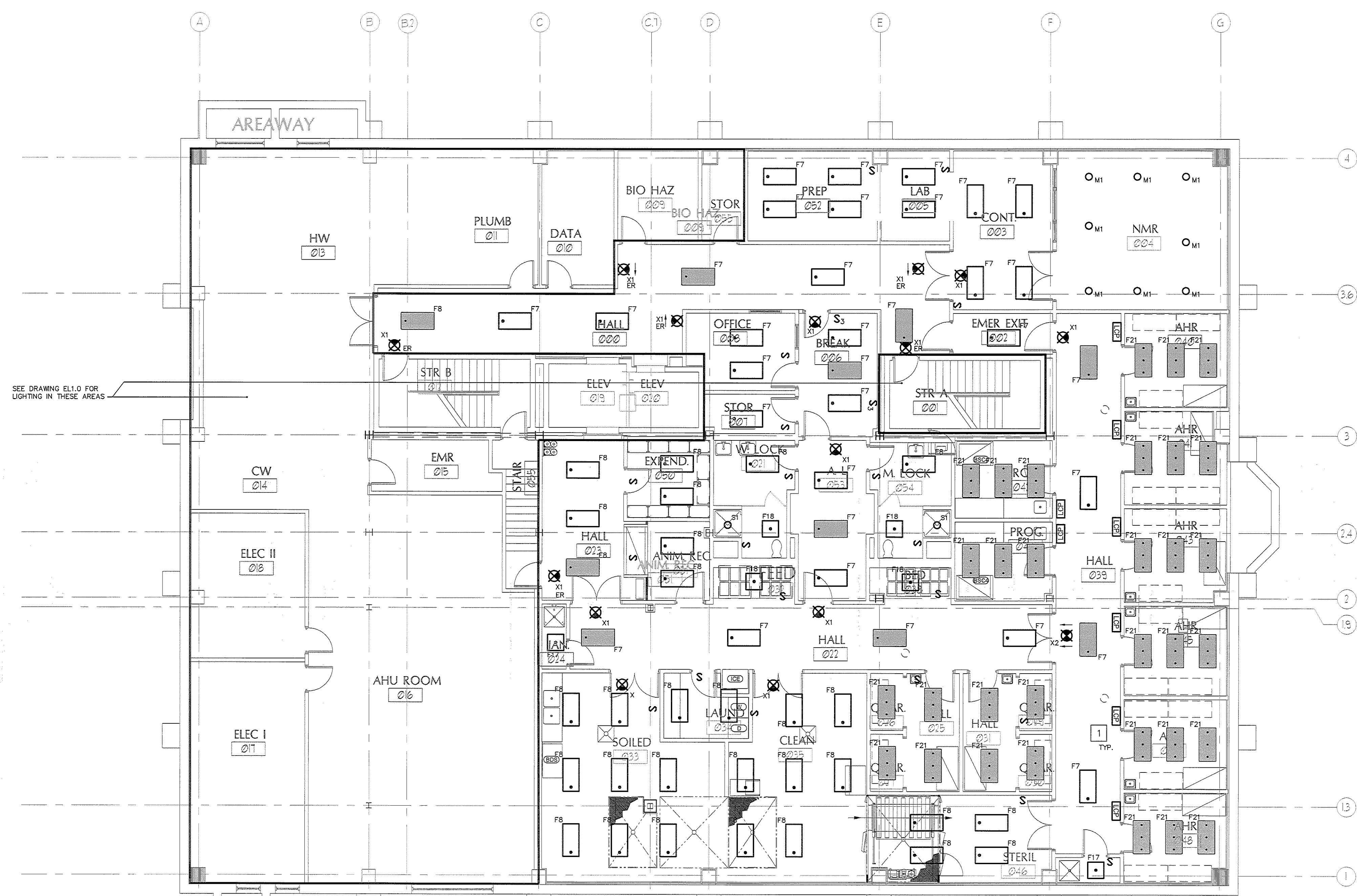
**Favreau**

**Titan Mechanical, Inc.**  
 Design Build Engineering - Mechanical Contractors

**UNIVERSITY OF NEW ENGLAND**

**COLLEGE OF PHARMACY**

716 STEVENS AVENUE,  
 PORTLAND, ME



SEE DRAWING EL1.0 FOR LIGHTING IN THESE AREAS

**GENERAL NOTES**  
 1) UNLESS SHOWN AS EXISTING TO REMAIN, REMOVE ALL LIGHT FIXTURES IN AREA THAT WILL BECOME NMR ROOM, VIVARIUM, AND HALLWAY. REPLACE WITH LAYOUT SHOWN.

**KEYED NOTES**  
 1) ANIMAL ROOM LIGHTING CONTROL PANEL, TYPICAL.

**1 LOWER LEVEL LIGHTING PLAN - ALTERNATE**  
 Scale: 1/8"=1'-0"

IF THIS SHEET IS NOT 24 X 36 IT IS A REDUCED SCALE PRINT - SCALE ACCORDINGLY

0 1 2 3  
SCALE 1"=1'

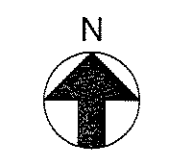
0 1 2 3 4  
SCALE 3/4"=1'

0 1 2 3 4 5 6  
SCALE 1/2"=1'

0 1 2 3 4 5 6 7 8 9 10 11 12  
SCALE 1/4"=1'

0 10 20 30 40  
SCALE 1/8"=1'

0 10 20 30 40  
SCALE 1/16"=1'



**BID SET - NOT FOR CONSTRUCTION**

#	DATE	DESCRIPTION
		BID SET
	02/08/08	Date Issued
	06506	Project Number

SHEET NAME  
**ELECTRICAL LIGHTING PLAN - LOWER LEVEL - ALTERNATE**

Drawn By: AMM  
 Checked By: MER

**EL1.1**