

PORT CITY ARCHITECTURE

65 NEWBURY STREET
PORTLAND, ME 04101
207.761.9000
fax: 207.761.2010
lita@portcityarch.com

VANZELM
ENGINEERS

VANZELM HEYWOOD & SHADFORD, INC.
19 FALCOTT NOTCH FARMINGTON, CT 06032
TEL: 860.284.2004 FAX: 860.284.2008

PROJECT NO.: 2007120.00

BECKER
structural engineers, inc.

SYTDesign
CONSULTANTS
CIVIL ENGINEERING & LANDSCAPE ARCHITECTURE

ALLIED/COOK
CONSTRUCTION

Farran
CORPORATION

Titan Mechanical, Inc.
Design/Build Engineering - Mechanical Contracting

UNIVERSITY OF NEW ENGLAND

COLLEGE OF PHARMACY

716 STEVENS AVENUE,
PORTLAND, ME

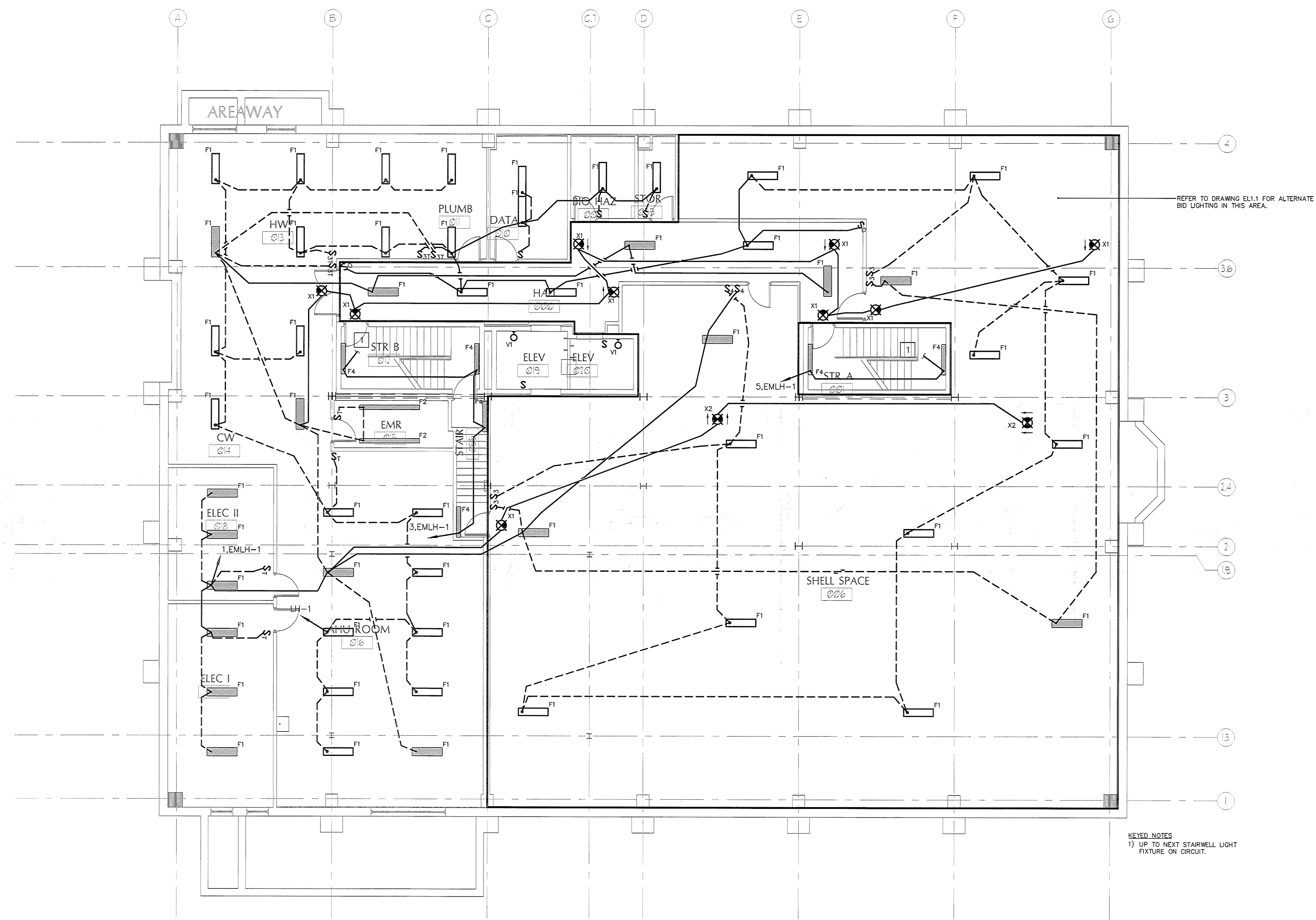
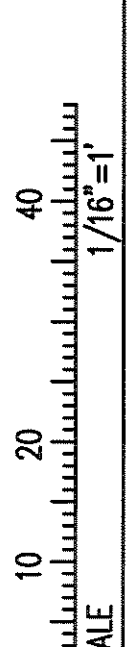
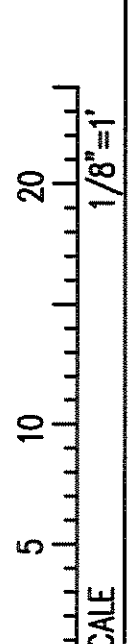
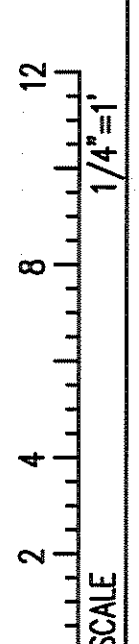
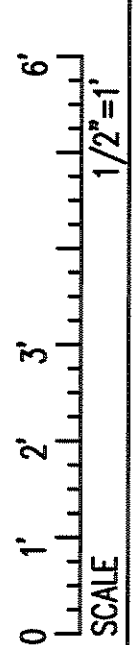
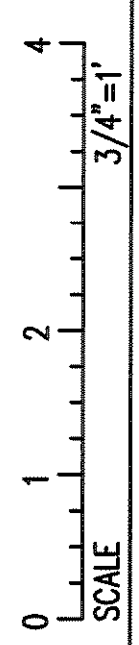
#	DATE	DESCRIPTION
		BID SET
	Date Issued	02/08/08
	Project Number	06506

SHEET NAME
**ELECTRICAL
LIGHTING PLAN -
LOWER LEVEL**

Drawn By
AMM
Checked By
MER

EL1.0

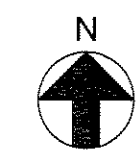
IF THIS SHEET IS NOT 24 X 36 IT IS A REDUCED SCALE PRINT - SCALE ACCORDINGLY



REFER TO DRAWING EL1.1 FOR ALTERNATE
BID LIGHTING IN THIS AREA.

KEYED NOTES
1) UP TO NEXT STAIRWELL LIGHT
FIXTURE ON CIRCUIT.

1 LOWER LEVEL LIGHTING PLAN-BASE B ID
Scale: 1/8"=1'-0"



BID SET - NOT FOR CONSTRUCTION