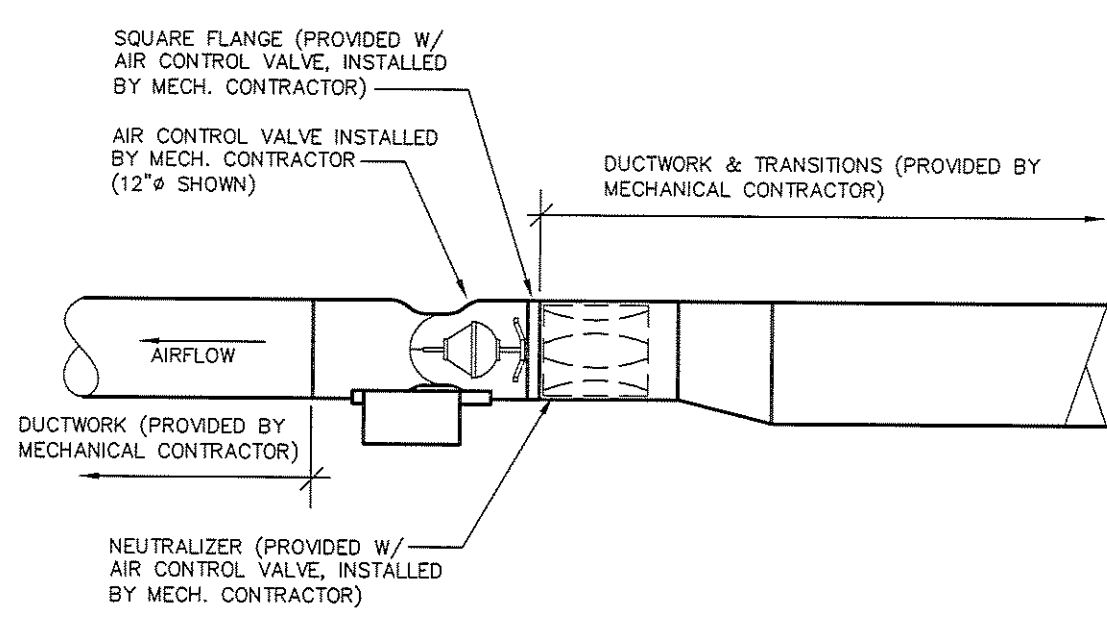
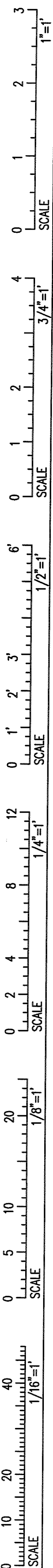
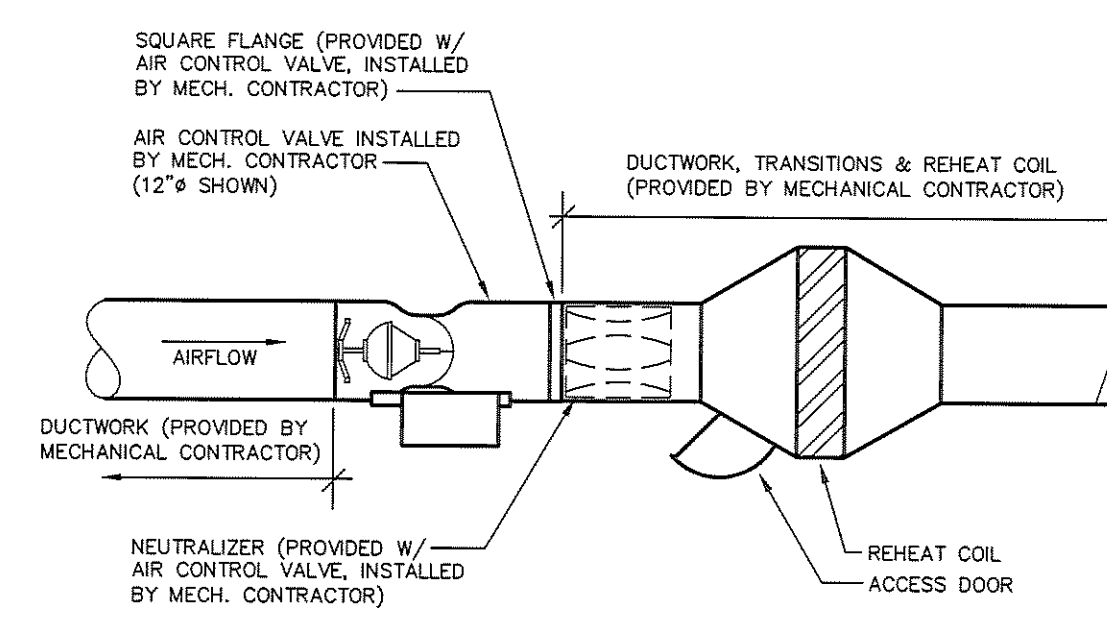


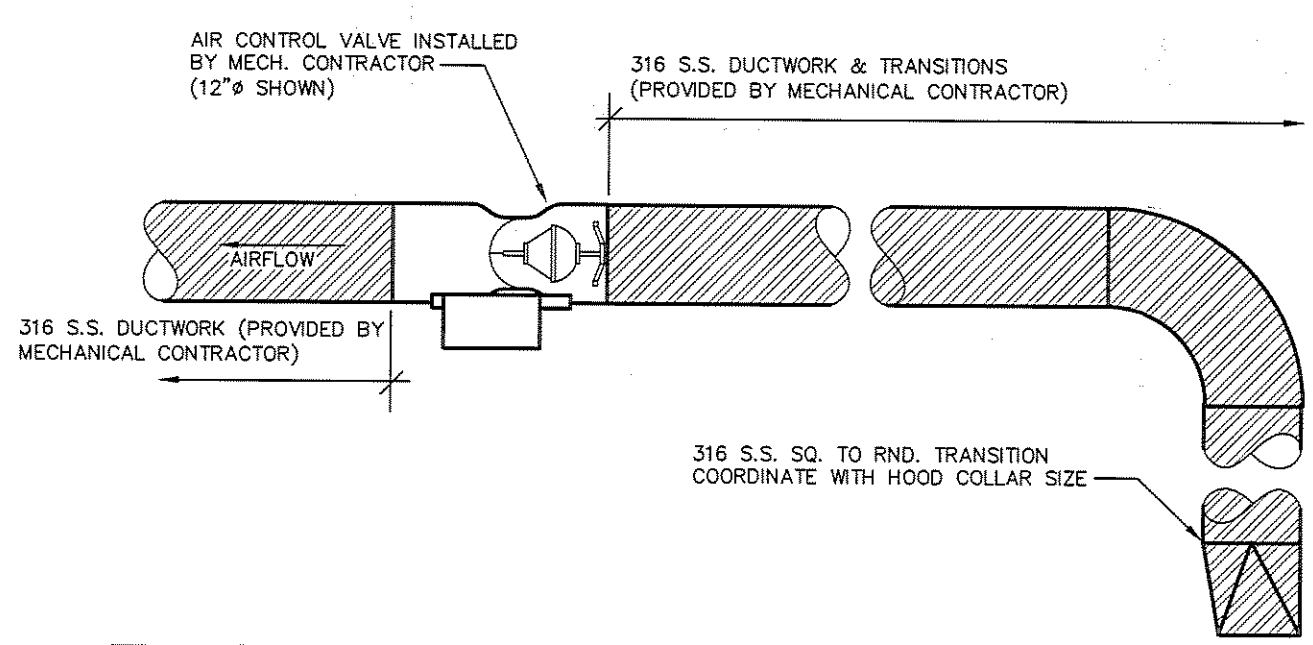
IF THIS SHEET IS NOT 24 X 36 IT IS A REDUCED SCALE PRINT - SCALE ACCORDINGLY



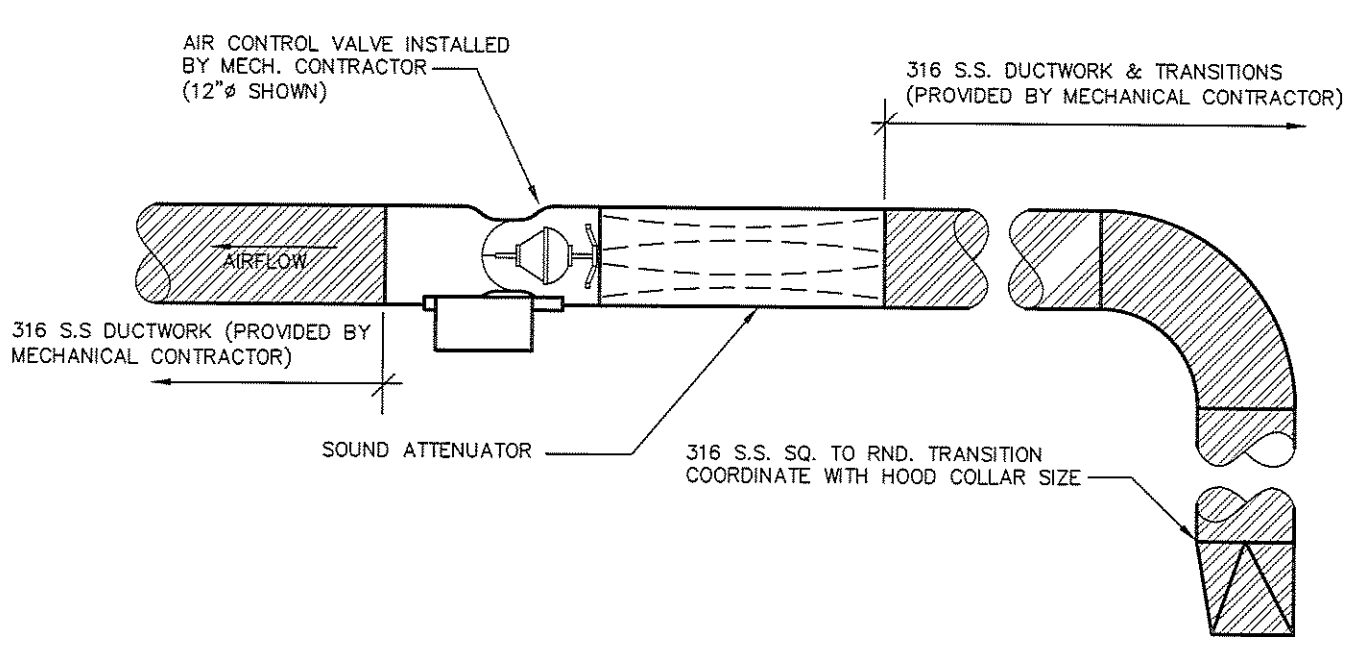
TYPICAL GENERAL EXHAUST AIR CONTROL VALVE DETAIL
NOT TO SCALE



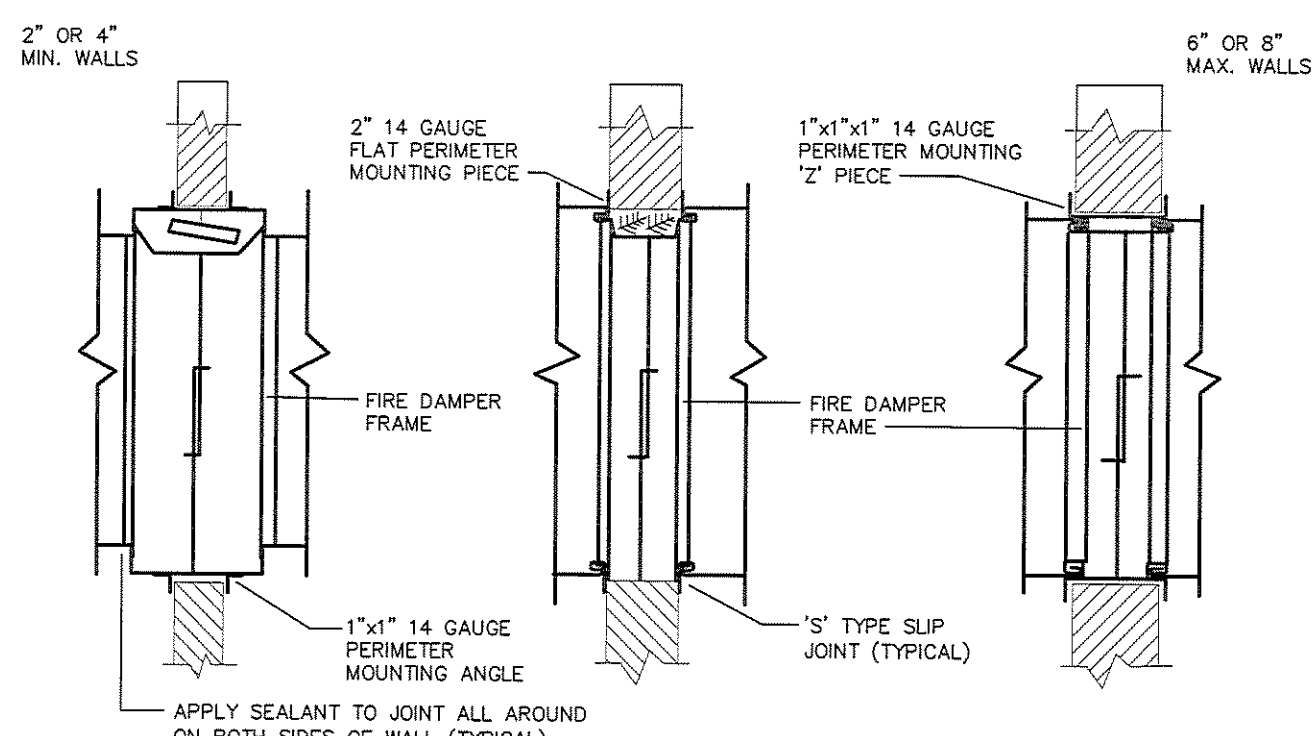
TYPICAL SUPPLY AIR CONTROL VALVE DETAIL
NOT TO SCALE



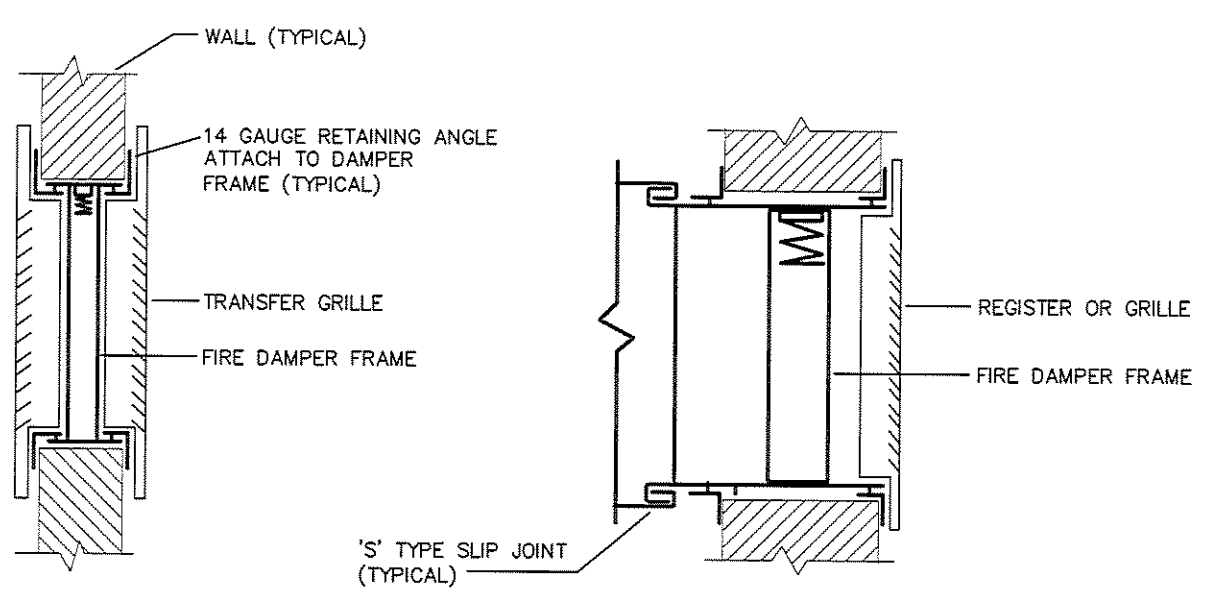
TYPICAL FUME HOOD EXHAUST AIR CONTROL VALVE DETAIL
NOT TO SCALE



TYPICAL HOOD EXHAUST AIR CONTROL VALVE DETAIL
NOT TO SCALE



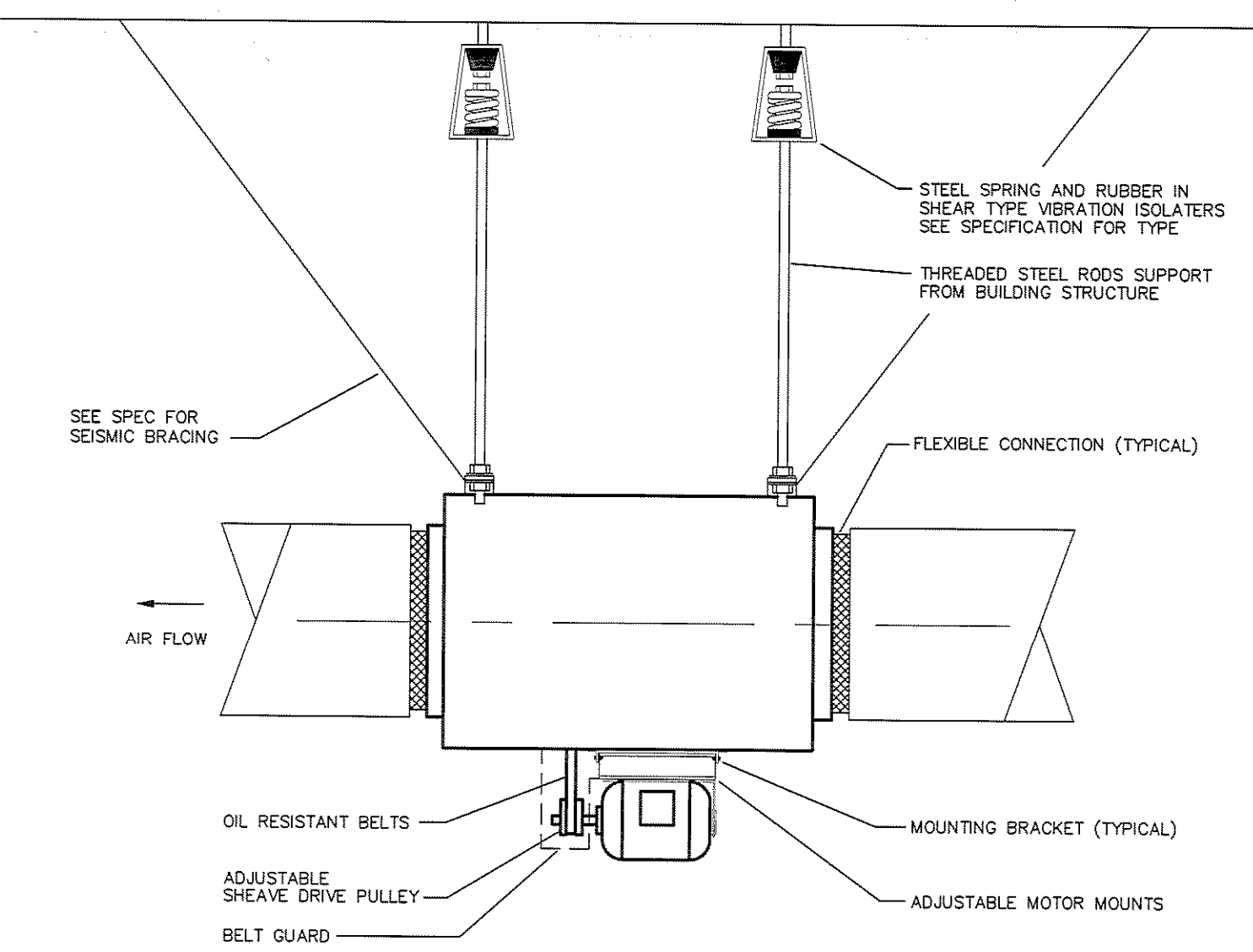
FIRE DAMPERS FOR DUCTWORK



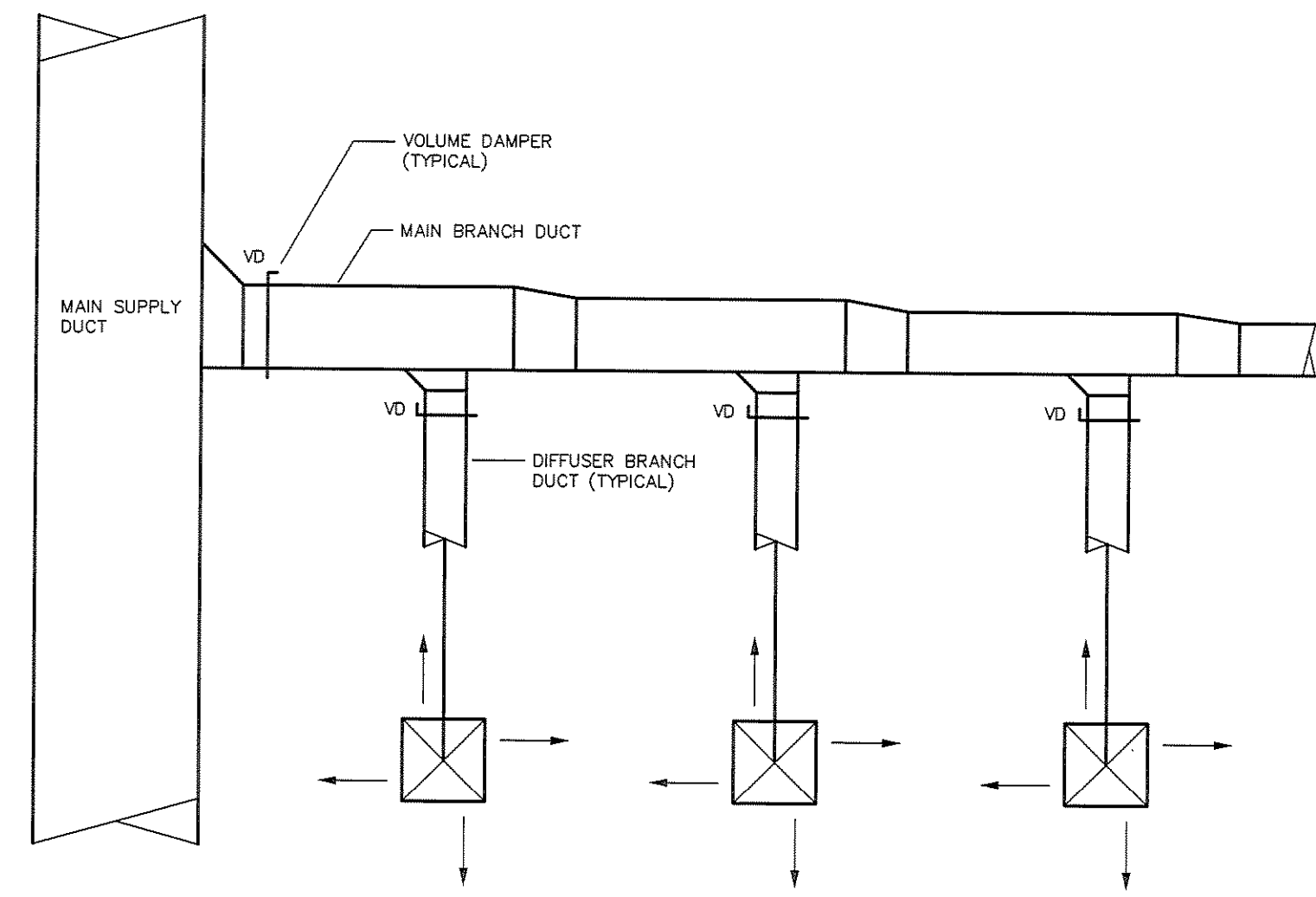
FIRE DAMPERS FOR REGISTERS AND GRILLES ONLY

NOTE:
ALL FIRE DAMPERS SHALL HAVE ACCESS DOORS IN DUCTWORK FOR INSPECTION & REPLACEMENT OF FUSIBLE LINKS.

7 TYPICAL FIRE DAMPER DETAILS AT FIRE RATED WALLS
SCALE: NONE

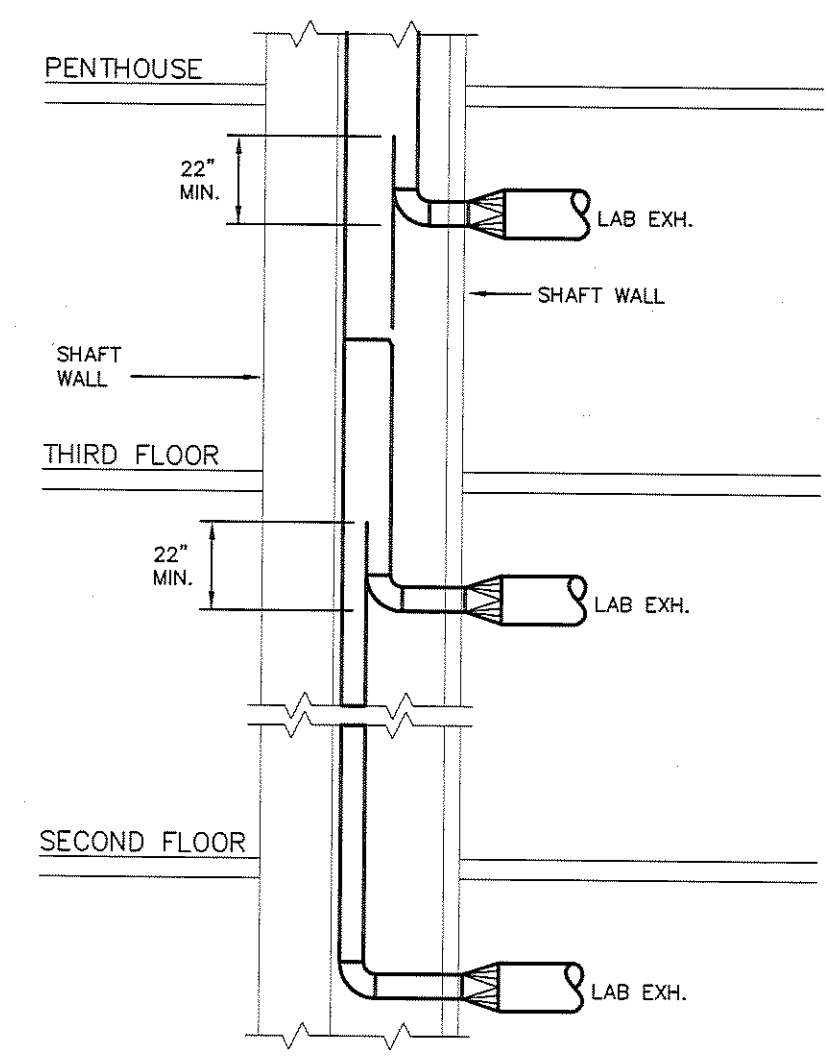


IN-LINE FAN DETAIL
NOT TO SCALE



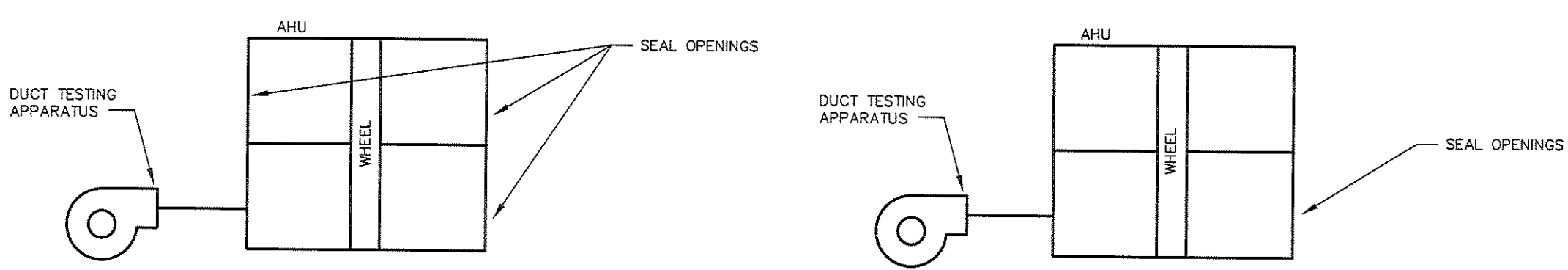
TYPICAL VOLUME DAMPER LOCATION
NOT TO SCALE

- NOTES:
1. PROVIDE VOLUME DAMPERS IN EVERY MAIN BRANCH AND DIFFUSER BRANCH AS SHOWN ABOVE.
 2. PROVIDE ADDITIONAL VOLUME DAMPERS AS SHOWN ON CONTRACT DOCUMENTS.



- NOTES:
1. INFORMATION IS BASED ON WELDED RECTANGULAR STAINLESS STEEL DUCT.

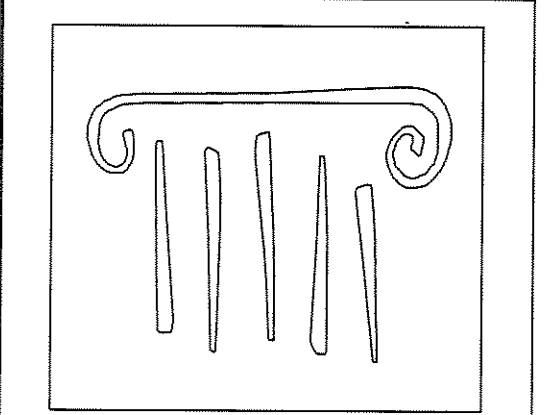
LAB EXHAUST RISER DETAIL



TEST 1 - BOX INTEGRITY
REQUIREMENTS: LEAKAGE RATE LESS THAN 1% OF DESIGN AIRFLOW AT 8\"/>

TEST 2 - WHEEL LEAKAGE INTEGRITY
1. ENERGIZE WHEEL TO NORMAL OPERATING SPEED
2. PRESSURIZE SUPPLY SIDE OF AHU TO SUM OF EXPECTED SUPPLY AIR OPERATING PRESSURE & RETURN AIR OPERATING PRESSURE.
3. AIR FLOW SHALL BE LESS THAN 5% OF SUPPLY AIR FLOW.

HEAT WHEEL AHU LEAKAGE TESTING
NOT TO SCALE



PORT CITY ARCHITECTURE

65 NEWBURY STREET
PORTLAND, ME 04101
207.761.9000
fax: 207.761.2010
lita@portcityarch.com

VANZELM ENGINEERS

VANZELM HEYWOOD & SHADFORD, INC.
10 TALCOTT NOTCH FARMINGTON, CT 06032
TEL: (860)284-5004 FAX: (860)284-2008

PROJECT NO.: 2007120.00

BECKER
Structural Engineers, Inc.

SYTDesign CONSULTANTS
CIVIL ENGINEERING & LANDSCAPE ARCHITECTURE

ALLIED/COOK CONSTRUCTION

Favreau
ELECTRICAL

Titan Mechanical, Inc.
Steel Bolt Engineering - Mechanical Consulting

UNIVERSITY OF NEW ENGLAND

COLLEGE OF PHARMACY

**716 STEVENS AVENUE,
PORTLAND, ME**

#	DATE	DESCRIPTION
		BID SET
	02/08/08	Date Issued
	06506	Project Number

SHEET NAME
MECHANICAL DETAILS

Drawn By
ANM
Checked By
DWM/FBH
M4.2

BID SET - NOT FOR CONSTRUCTION