

PORT CITY ARCHITECTURE

65 NEWBURY STREET  
PORTLAND, ME 04101  
207.761.9000  
fax: 207.761.2010  
lita@portcityarch.com

**VANZELM**  
ENGINEERS

VANZELM HEYWOOD & SHADFORD, INC.  
19 TALCOTT NOTCH FARMINGTON, CT 06032  
TEL: (860) 284-2064 FAX: (860) 284-2068

PROJECT NO.: 2007120.00

**BECKER**  
structural engineers, inc.

**SYTDesign**  
CONSULTANTS  
CIVIL ENGINEERING & LANDSCAPE ARCHITECTURE

**ALLIED/COOK**  
CONSTRUCTION

**Faireau**  
SLURRY

Titan Mechanical, Inc.  
Design Build Engineering - Mechanical Consulting

UNIVERSITY OF NEW ENGLAND

COLLEGE OF PHARMACY

716 STEVENS AVENUE,  
PORTLAND, ME

# DATE DESCRIPTION

BID SET

Date Issued 02/08/08

Project Number 06506

SHEET NAME  
**MECHANICAL  
ATTIC MER  
SECTIONS**

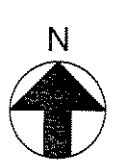
Drawn By

WGS/DMH

Checked By

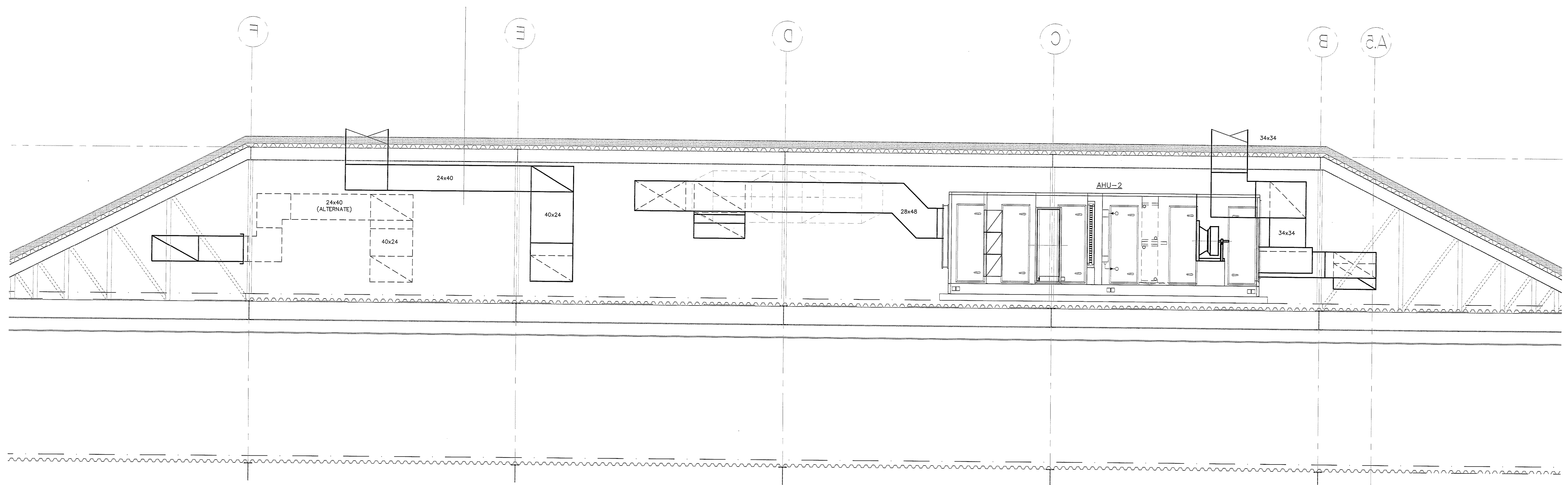
DWM/DFB

**M2.3**

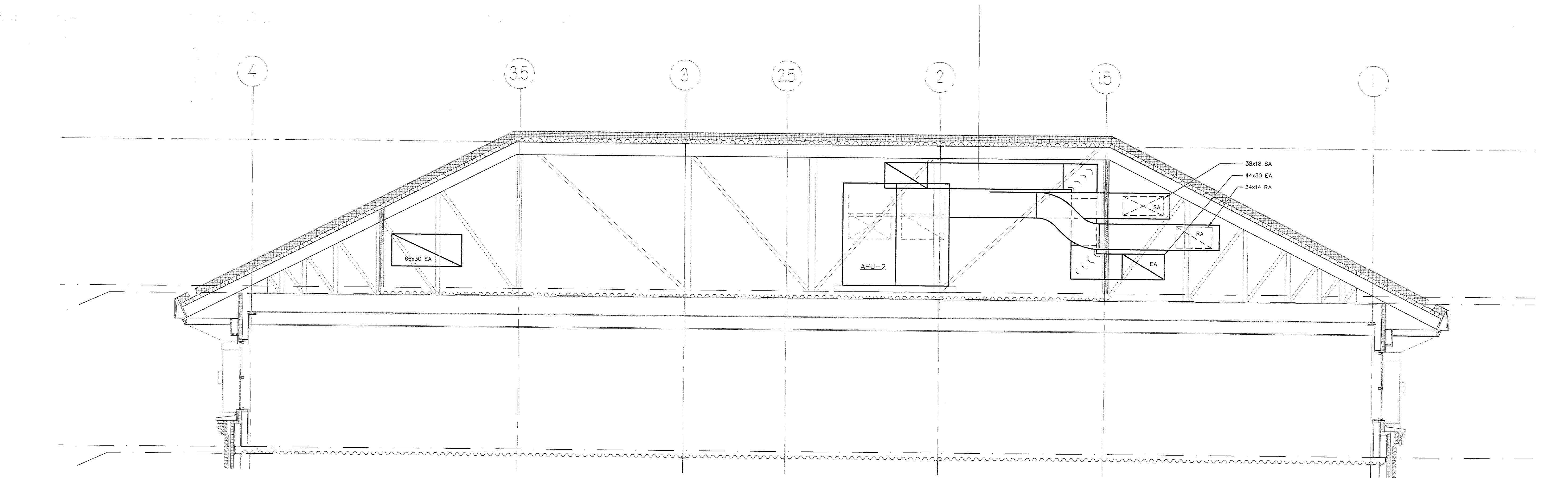


**BID SET - NOT FOR CONSTRUCTION**

COPYRIGHT: Reuse or reproduction of the contents of this document is not permitted without written permission of PORT CITY ARCHITECTURE PA



**1 SECTION**  
M2.4 Scale: 1/4"=1'-0"



**2 SECTION**  
M2.4 Scale: 1/4"=1'-0"

IF THIS SHEET IS NOT 24 X 36 IT IS A REDUCED SCALE PRINT - SCALE ACCORDINGLY

SCALE 1"=1'

SCALE 3/4"=1'

SCALE 1/2"=1'

SCALE 1/4"=1'

SCALE 1/8"=1'

SCALE 1/16"=1'