

**PORT CITY ARCHITECTURE**

65 NEWBURY STREET  
 PORTLAND, ME 04101  
 207.761.9000  
 fax: 207.761.2010  
 lita@portcityarch.com

**VANZELM ENGINEERS**

VANZELM HEYWOOD & SHADFORD, INC.  
 10 TALCOTT NOTCH FARMINGTON, CT 06032  
 TEL: (860) 384-3564 FAX: (860) 384-3599

PROJECT NO.: 2007120.00

**BECKER**  
 structural engineers, inc.

**SYTDesign CONSULTANTS**  
 CIVIL ENGINEERING & LANDSCAPE ARCHITECTURE

**ALLIED/COOK CONSTRUCTION**

**Favreau**

Titan Mechanical, Inc.  
 Design-Build Engineering - Mechanical Contracting

UNIVERSITY OF NEW ENGLAND

COLLEGE OF PHARMACY

716 STEVENS AVENUE,  
 PORTLAND, ME

#	DATE	DESCRIPTION
		BID SET
	02/08/08	Date Issued
	06306	Project Number

SHEET NAME  
**MECHANICAL LOWER LEVEL PART PLAN-ALT**

Drawn By: WGS  
 Checked By: DWM/FBH  
**M2.1**

**BID SET - NOT FOR CONSTRUCTION**

COPYRIGHT: Reuse or reproduction of the contents of this document is not permitted without written permission of PORT CITY ARCHITECTURE PA

IF THIS SHEET IS NOT 24 X 36 IT IS A REDUCED SCALE PRINT - SCALE ACCORDINGLY

0 1 2 3  
 SCALE 1"=1'

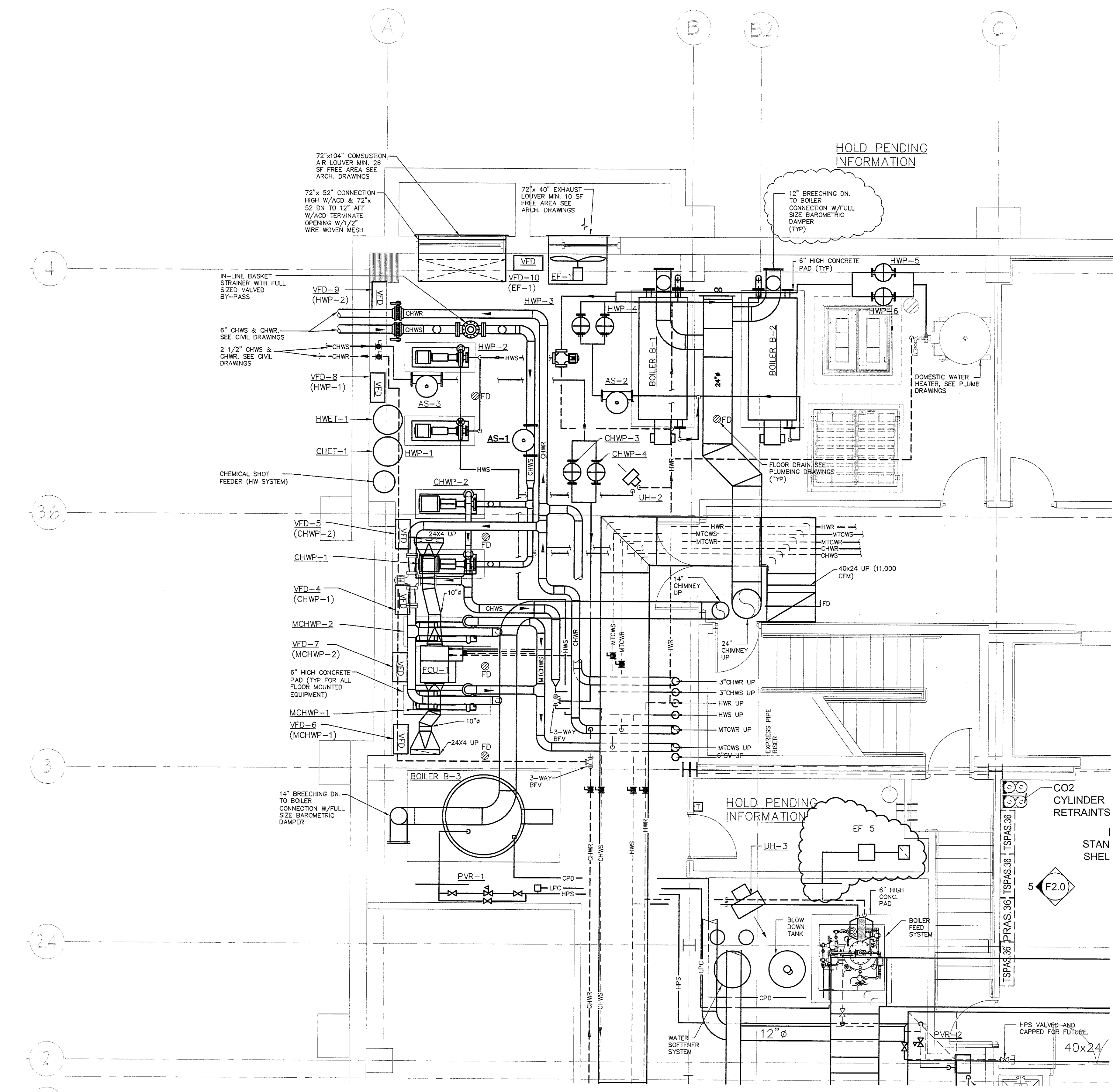
0 1 2 3 4  
 SCALE 3/4"=1'

0 1 2 3 4 5 6  
 SCALE 1/2"=1'

0 1 2 3 4 5 6 7 8 9 10 12  
 SCALE 1/4"=1'

0 1 2 3 4 5 6 7 8 9 10 12 14 16 18 20  
 SCALE 1/8"=1'

0 10 20 30 40  
 SCALE 1/16"=1'



**1 MECHANICAL LOWER LEVEL PART PLAN ALTERNATE**  
 Scale: 1/4"=1'-0"

