

PORT CITY ARCHITECTURE

65 NEWBURY STREET  
PORTLAND, ME 04101  
207.761.9000  
fax: 207.761.2010  
lita@portcityarch.com

**VANZELM**  
ENGINEERS

VANZELM HEYWOOD & SHADFORD, INC.  
19 TALCOTT NOTCH FARMINGTON, CT 06032  
TEL: (860) 284-2884 FAX: (860) 284-2885

PROJECT NO.: 2007120.00

**BECKER**  
structural engineers, inc.

**SYTDesign**  
CONSULTANTS  
CIVIL ENGINEERING & LANDSCAPE ARCHITECTURE

**ALLIED/COOK**  
CONSTRUCTION

**Fareau**  
MECHANICAL

**Titan Mechanical, Inc.**  
Design/Build Engineering - Mechanical Contracting

UNIVERSITY OF NEW ENGLAND

COLLEGE OF PHARMACY

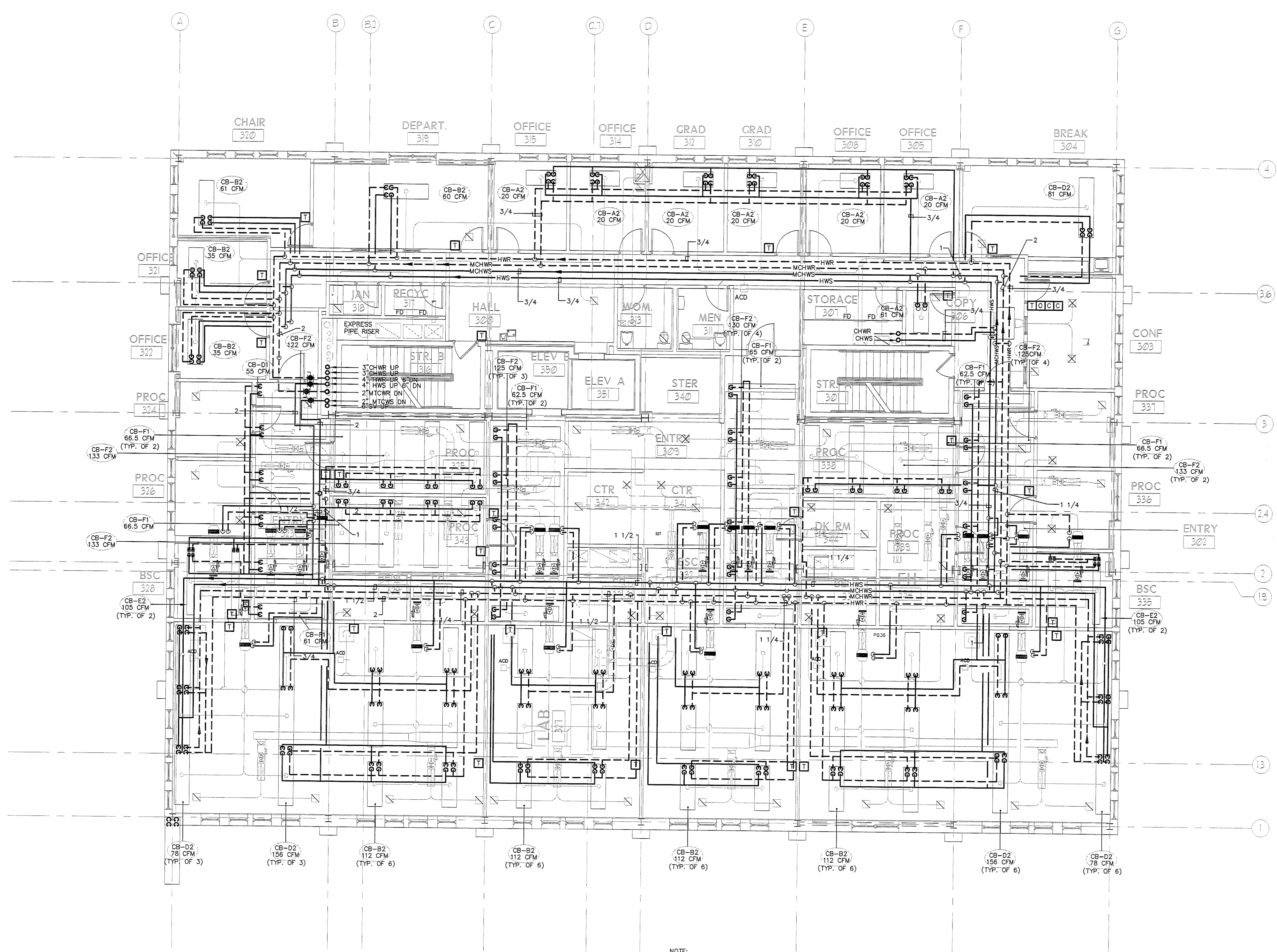
716 STEVENS AVENUE,  
PORTLAND, ME

#	DATE	DESCRIPTION
		BID SET
	02/08/08	Date Issued
	06506	Project Number

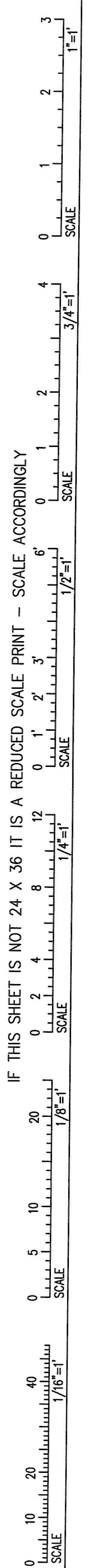
SHEET NAME  
**MECHANICAL PIPING  
THIRD FLOOR PLAN**

Drawn By  
WSS  
Checked By  
DWM/FBH  
**MP1.4**

**BID SET - NOT FOR CONSTRUCTION**



**1 MECHANICAL PIPING THIRD FLOOR PLAN**  
Scale: 1/8"=1'-0"



IF THIS SHEET IS NOT 24 X 36 IT IS A REDUCED SCALE PRINT - SCALE ACCORDINGLY