

PORT CITY ARCHITECTURE

65 NEWBURY STREET
PORTLAND, ME 04101
207.761.9000
fax: 207.761.2010
lita@portcityarch.com

VANZELM
ENGINEERS

VANZELM HEYWOOD & SHADFORD, INC.
10 TALCOTT NOTCH FARMINGTON, CT 06032
TEL: (860) 284-2064 FAX: (860) 284-2088

PROJECT NO.: 2007120.00

BECKER
Structural Engineers, Inc.

SYTDesign
CONSULTANTS
CIVIL ENGINEERING & LANDSCAPE ARCHITECTURE

ALLIED/COOK
CONSTRUCTION

Favreau
ELECTRICAL

Titan Mechanical, Inc.
Design-Build Engineering - Mechanical Contracting

UNIVERSITY OF NEW ENGLAND

COLLEGE OF PHARMACY

716 STEVENS AVENUE,
PORTLAND, ME

#	DATE	DESCRIPTION
		BID SET
	02/08/08	Date Issued
	06506	Project Number

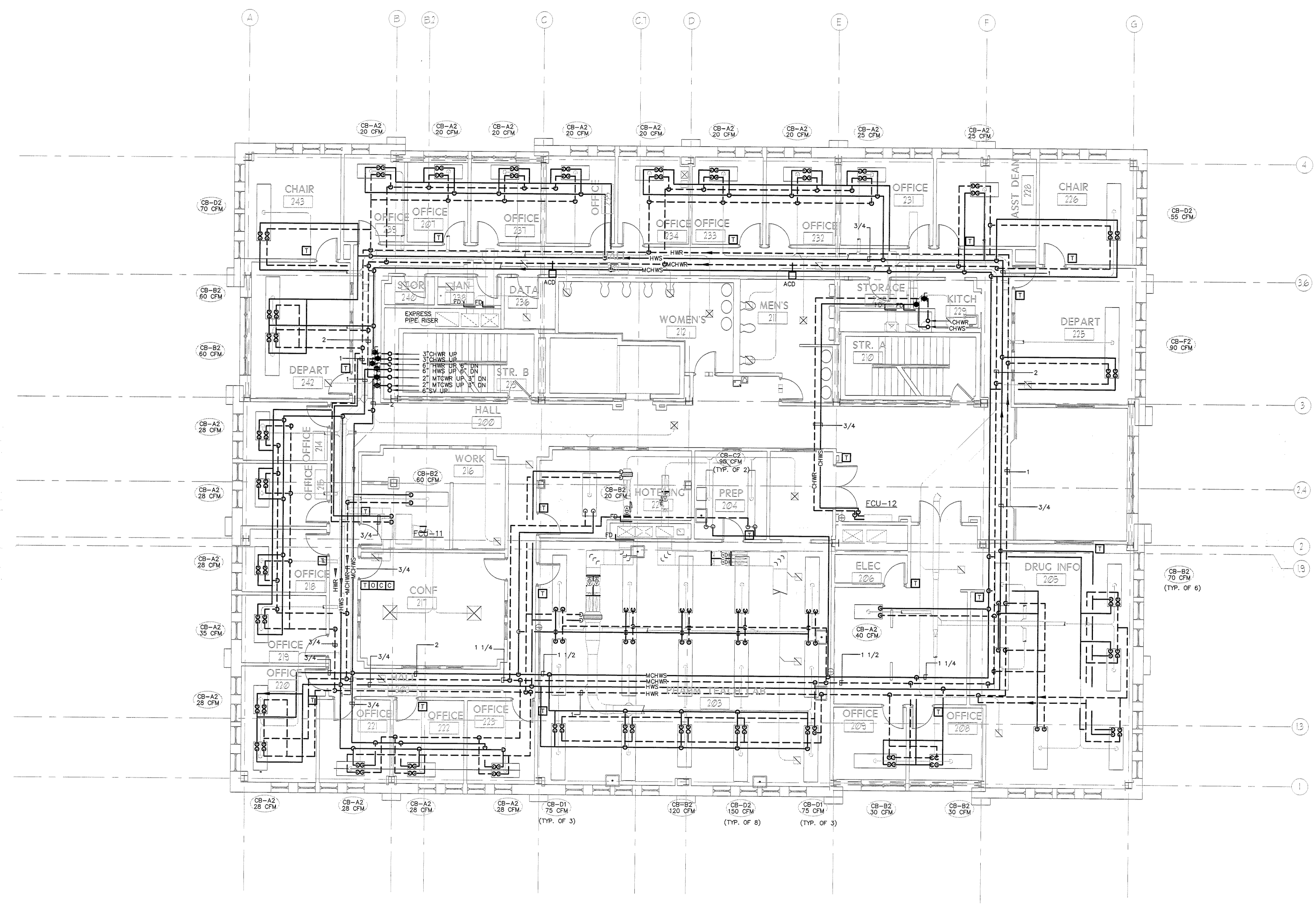
SHEET NAME
**MECHANICAL PIPING
SECOND FLOOR PLAN**

Drawn By
WGS
Checked By
DWM/FBH

MP1.3

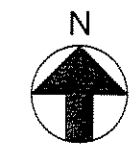
BID SET - NOT FOR CONSTRUCTION

COPYRIGHT: Reuse or reproduction of the contents of this document is not permitted without written permission of PORT CITY ARCHITECTURE PA



NOTE:
1. BRANCH PIPING TO ALL CHILLED BEAMS, FAN COILS
AND HEATING COIL SHALL BE A MINIMUM OF 3/4"
UNLESS NOTED OTHERWISE ON DRAWINGS.

1 MECHANICAL PIPING SECOND FLOOR PLAN
Scale: 1/8"=1'-0"



IF THIS SHEET IS NOT 24 X 36 IT IS A REDUCED SCALE PRINT - SCALE ACCORDINGLY

0 1 2 3
SCALE 1"=1'

0 1 2 3 4
SCALE 3/4"=1'

0 1 2 3 4 5 6
SCALE 1/2"=1'

0 1 2 3 4 5 6 7 8 9 10 12
SCALE 1/4"=1'

0 2 4 6 8 10 12 14 16 18 20
SCALE 1/8"=1'

0 10 20 30 40
SCALE 1/16"=1'