

**PORT CITY ARCHITECTURE**

65 NEWBURY STREET  
 PORTLAND, ME 04101  
 207.761.9000  
 fax: 207.761.2010  
 lita@portcityarch.com

**VANZELM ENGINEERS**

VANZELM HEYWOOD & SHADFORD, INC.  
 10 TALCOTT NOTCH FARMINGTON, CT 06032  
 TEL: (860) 284-7064 FAX: (860) 284-5098

PROJECT NO.: 2007120.00

**BECKER**  
 structural engineers, inc.

**SYTDesign**  
 CONSULTANTS  
 CIVIL ENGINEERING & LANDSCAPE ARCHITECTURE

**ALLIED/COOK**  
 CONSTRUCTION

**Farreau**

**Titan Mechanical, Inc.**  
 Design/Build Engineering - Mechanical Contracting

UNIVERSITY OF NEW ENGLAND

COLLEGE OF PHARMACY

716 STEVENS AVENUE,  
 PORTLAND, ME

#	DATE	DESCRIPTION
		BID SET
	02/08/08	Date Issued
	06506	Project Number

SHEET NAME  
**MECHANICAL PIPING LOWER LEVEL PLAN-ALTERNATE**

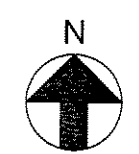
Drawn By

WGS

Checked By

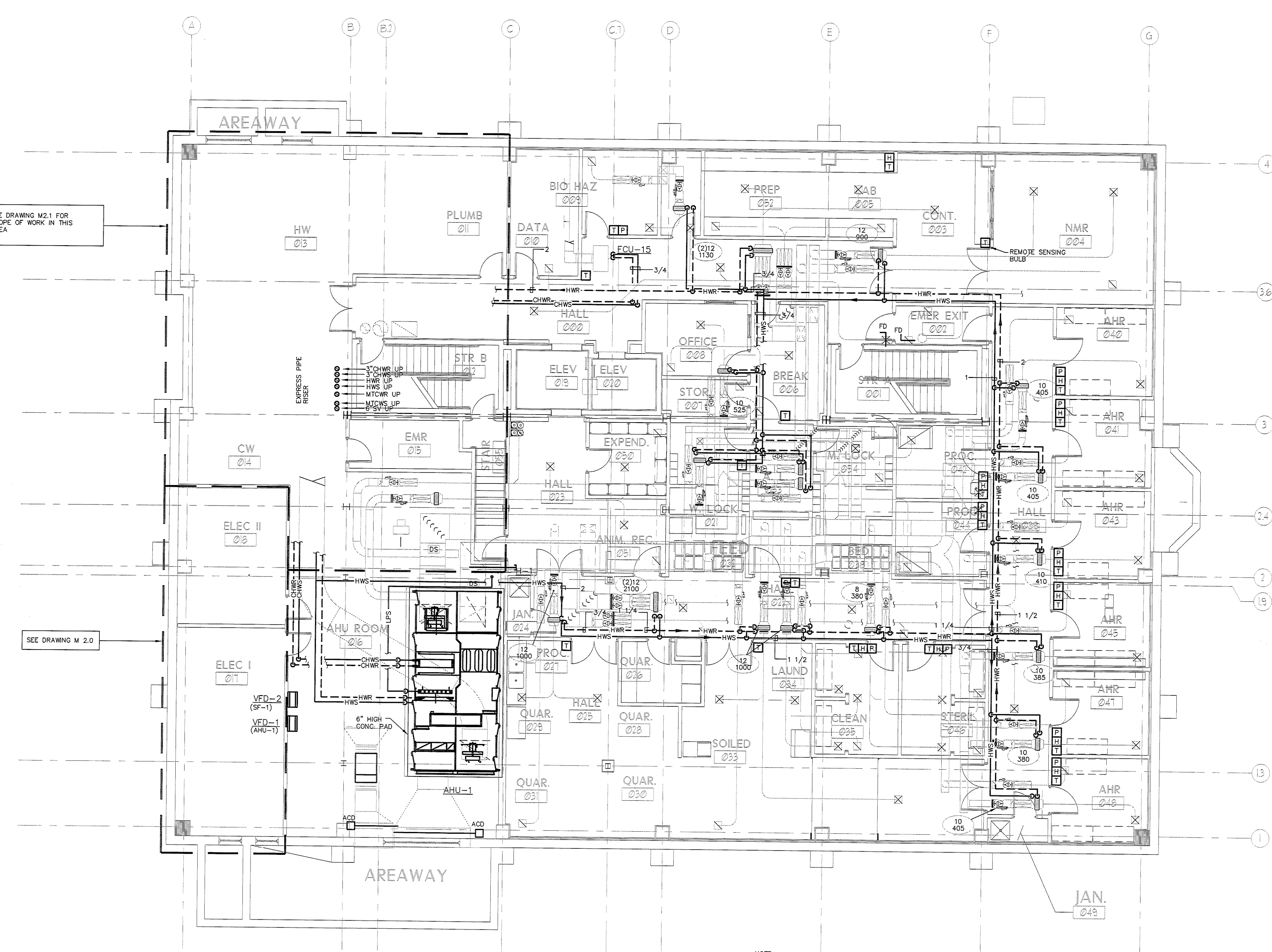
DWM/FBH

**MP1.1**



**BID SET - NOT FOR CONSTRUCTION**

COPYRIGHT: Reuse or reproduction of the contents of this document is not permitted without written permission of PORT CITY ARCHITECTURE, PA



SEE DRAWING M2.1 FOR SCOPE OF WORK IN THIS AREA

SEE DRAWING M 2.0

NOTE:  
 1. BRANCH PIPING TO ALL CHILLED BEAMS, FAN COILS AND HEATING COIL SHALL BE A MINIMUM OF 3/4" UNLESS NOTED OTHERWISE ON DRAWINGS.

**1 MECHANICAL PIPING LOWER LEVEL PLAN - ALTERNATE**  
 Scale: 1/8"=1'-0"

IF THIS SHEET IS NOT 24 X 36 IT IS A REDUCED SCALE PRINT - SCALE ACCORDINGLY

0 1 2 3  
 SCALE 1"=1'

0 1 2 3 4  
 SCALE 3/4"=1'

0 1 2 3 4 5 6  
 SCALE 1/2"=1'

0 1 2 3 4 5 6 7 8 9 10 11 12  
 SCALE 1/4"=1'

0 10 20 30 40  
 SCALE 1/16"=1'