

**PORT CITY
ARCHITECTURE**

65 NEWBURY STREET
PORTLAND, ME 04101
207.761.9000
fax: 207.761.2010
lita@portcityarch.com

**VANZELM
ENGINEERS**

VANZELM HEYWOOD & SHADFORD, INC.
10 TALCOTT NOTCH FARMINGTON, CT 06032
TEL: (860) 284-3066 FAX: (860) 284-2098

PROJECT NO.: 2007120.00

BECKER
Structural Engineers, Inc.

SYTDesign
CONSULTANTS
CIVIL ENGINEERING & LANDSCAPE ARCHITECTURE

ALLIED/COOK
CONSTRUCTION

Favreau
FLORISSANT

Titan Mechanical, Inc.
Specialty Building Engineering - Mechanical Contracting

UNIVERSITY OF NEW ENGLAND

COLLEGE OF PHARMACY

**716 STEVENS AVENUE,
PORTLAND, ME**

#	DATE	DESCRIPTION
		BID SET
	02/08/08	Date Issued
	06506	Project Number

BID SET

02/08/08

06506

SHEET NAME
**MECHANICAL
LOWER LEVEL
PLAN-ALTERNATE**

Drawn By

WSS

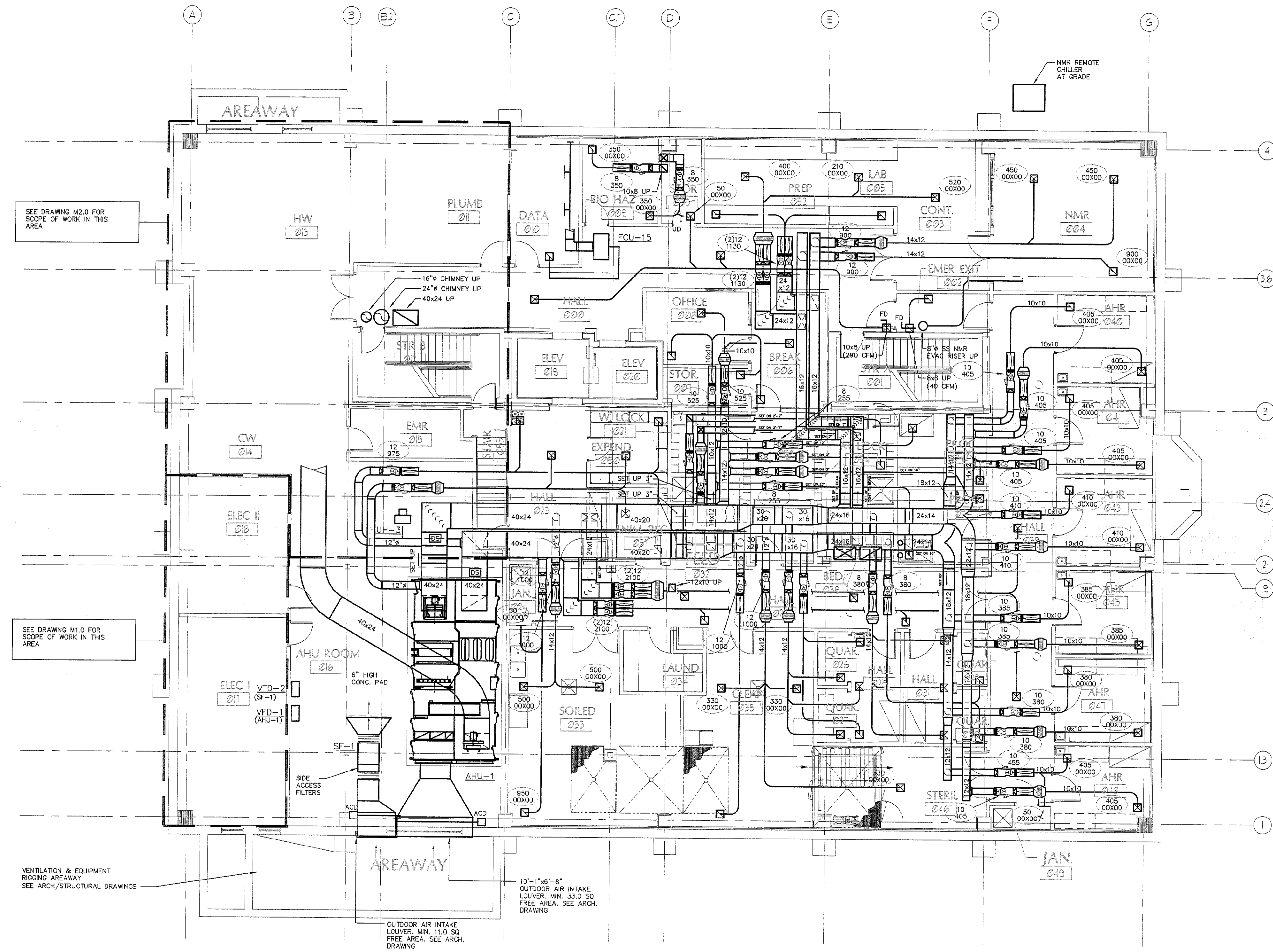
Checked By

DWM/FBH

M1.1

BID SET - NOT FOR CONSTRUCTION

COPYRIGHT: Reuse or reproduction of the contents of this document is not permitted without written permission of PORT CITY ARCHITECTURE PA



1 MECHANICAL LOWER LEVEL FLOOR PLAN - ALTERNATE
Scale: 1/8"=1'-0"

