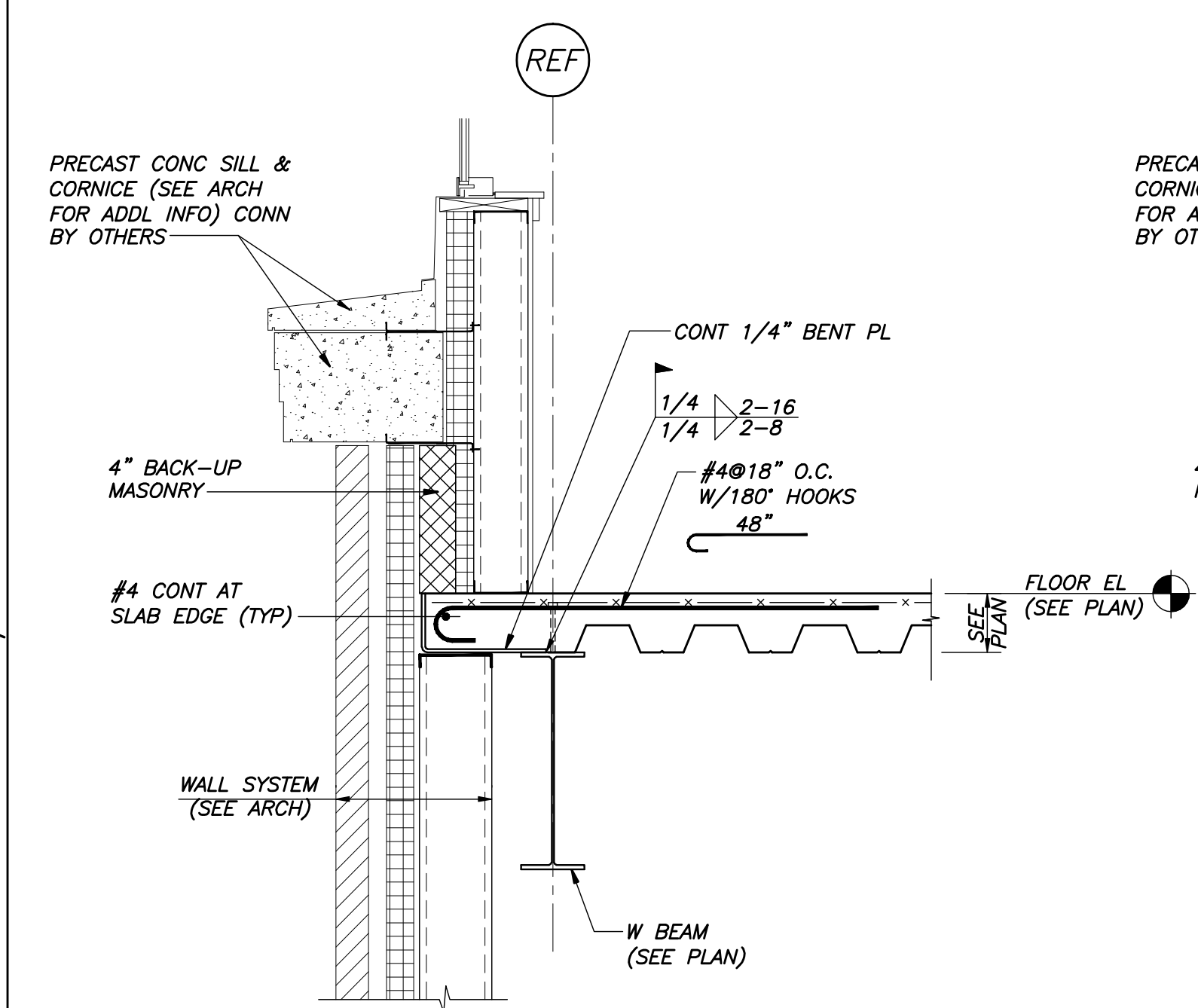
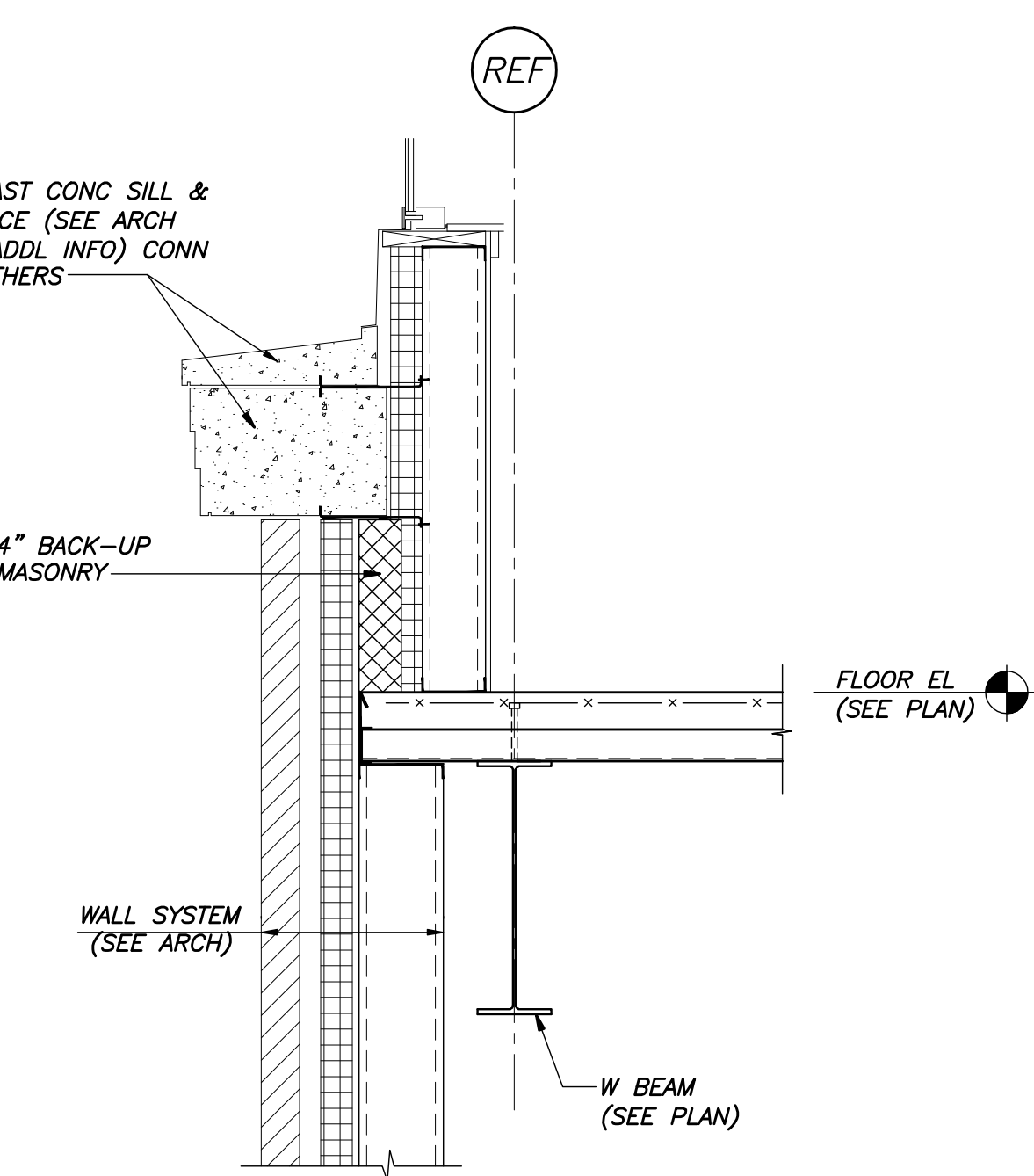


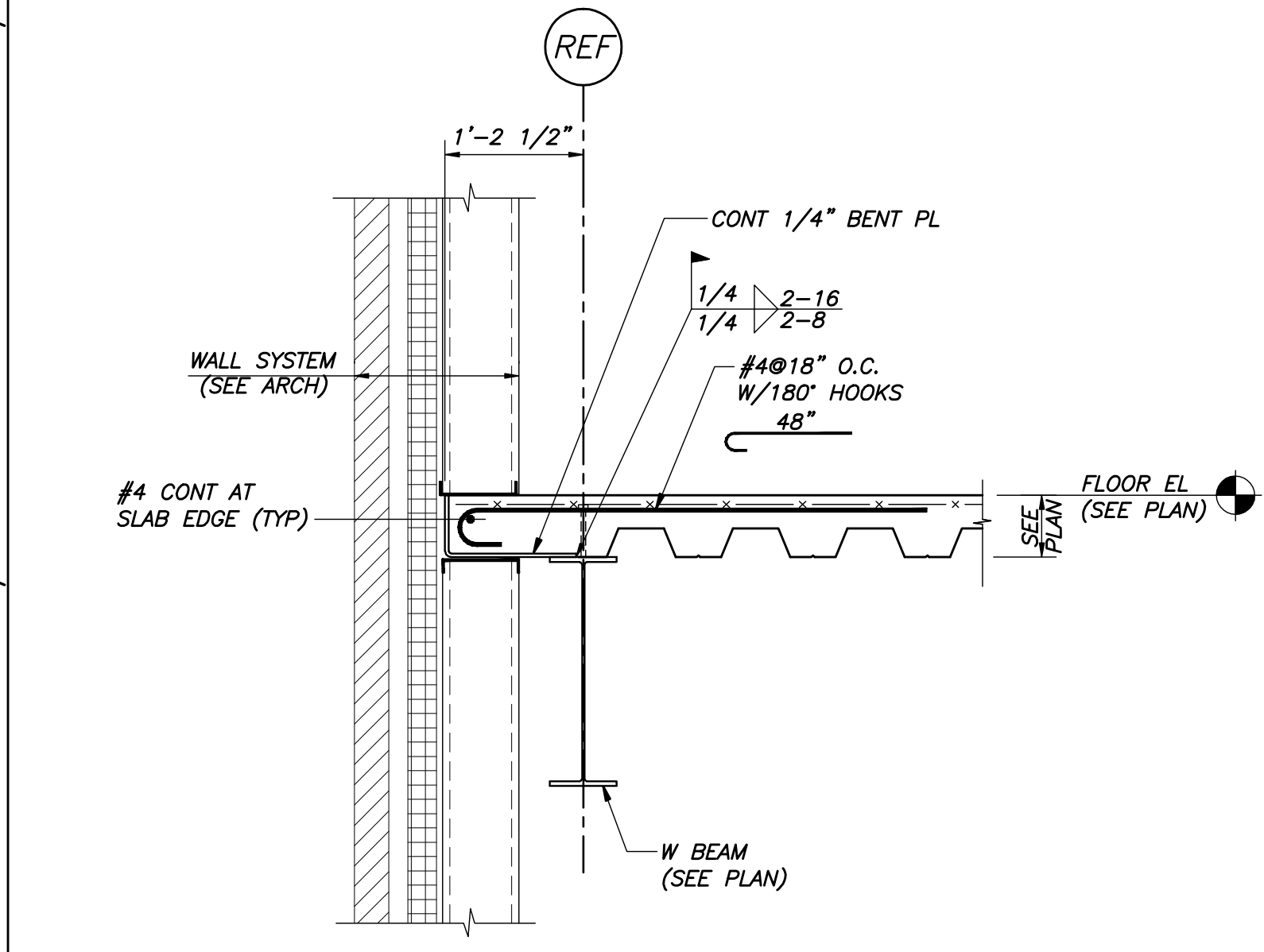
IF THIS SHEET IS NOT 24 X 36 IT IS A REDUCED SCALE PRINT - SCALE ACCORDINGLY



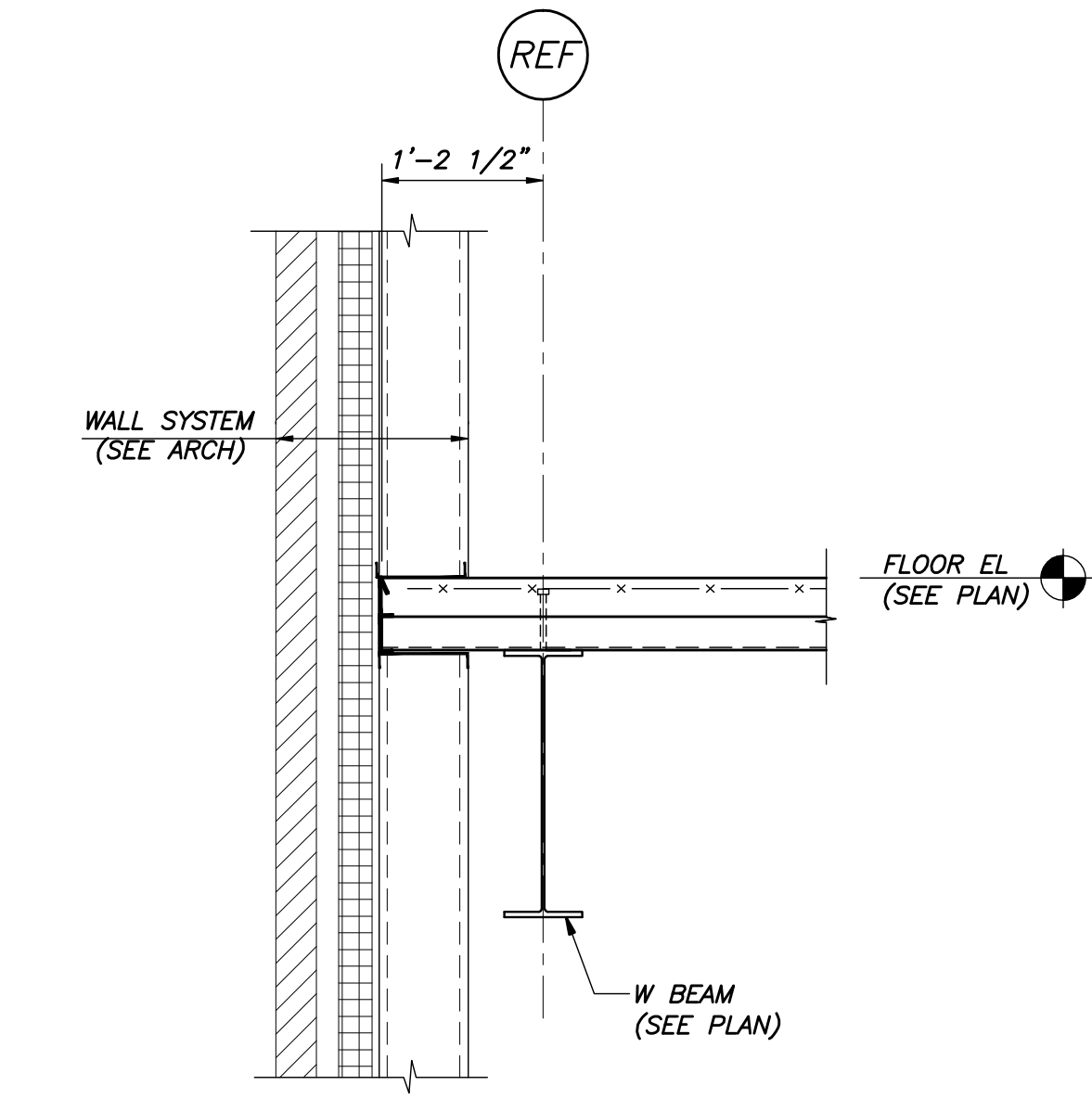
SECTION 1
3/4"=1'-0" S1.4



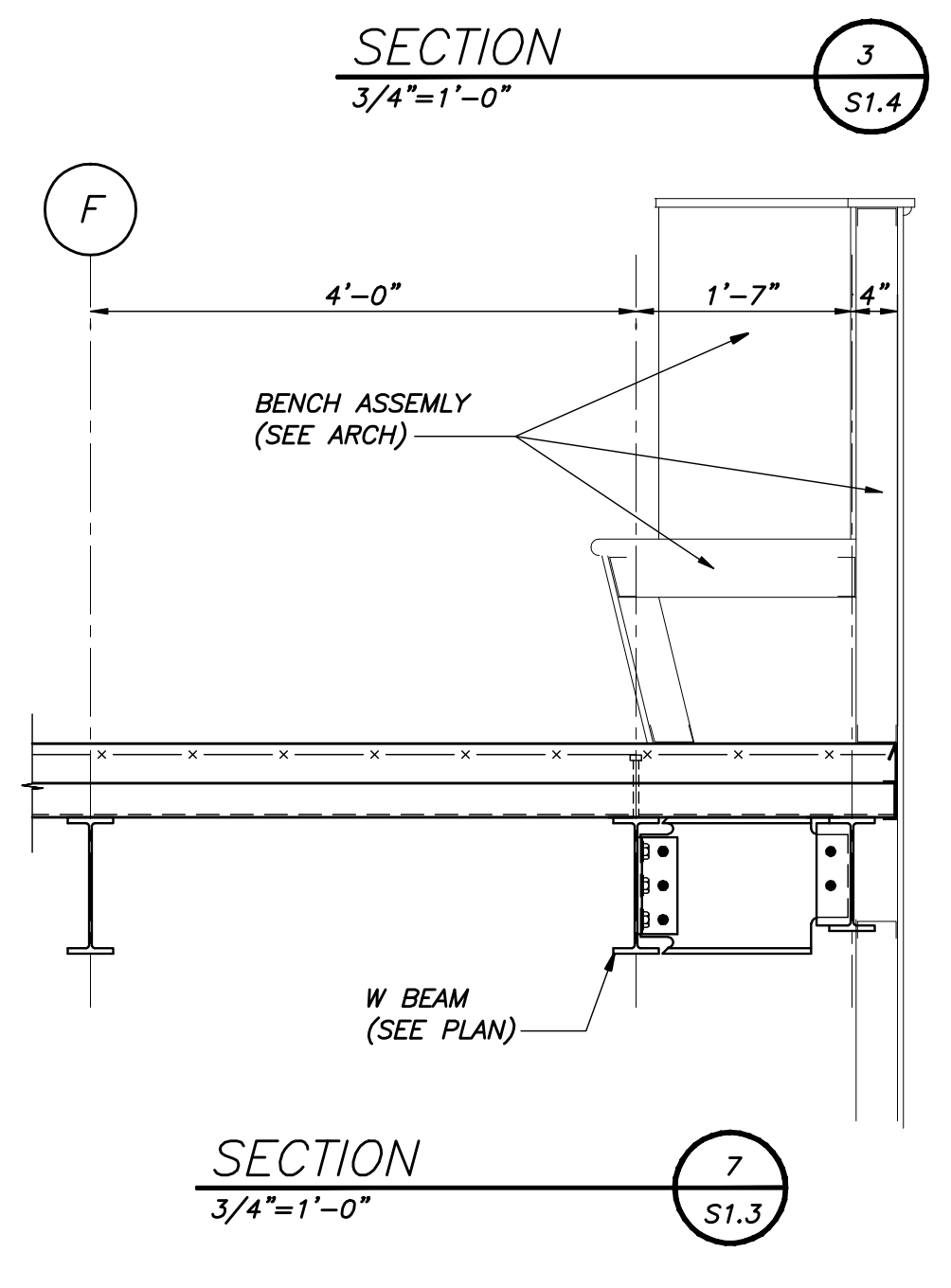
SECTION 2
3/4"=1'-0" S1.4



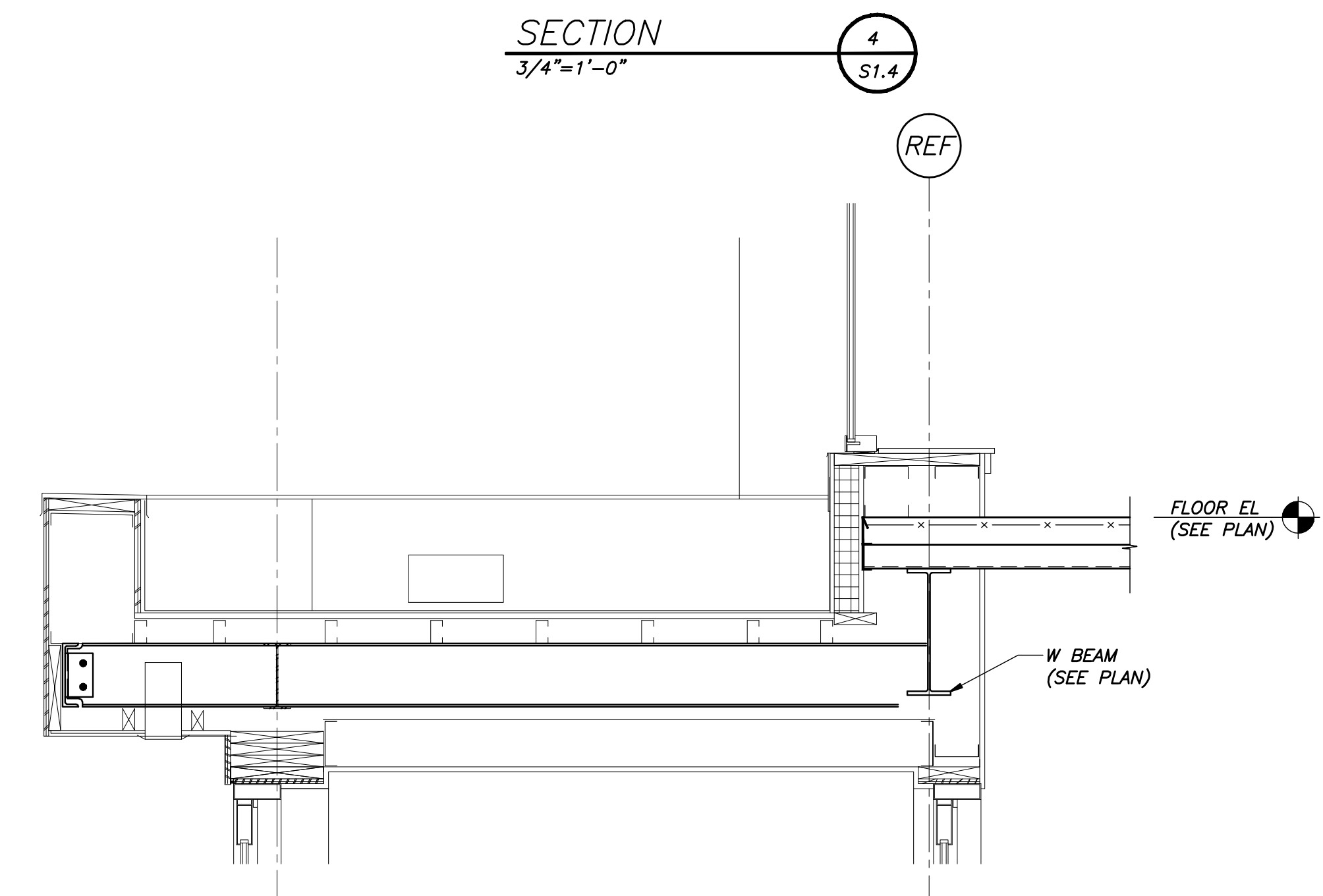
SECTION 5
3/4"=1'-0" S1.3



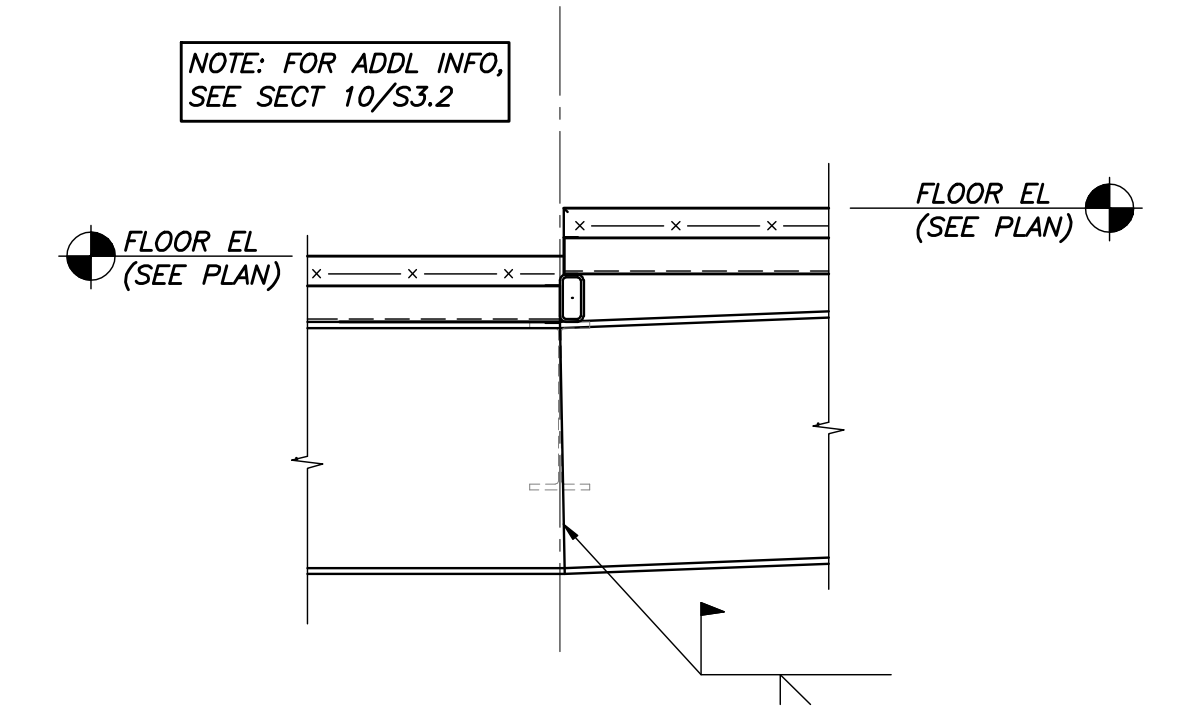
SECTION 6
3/4"=1'-0" S1.3



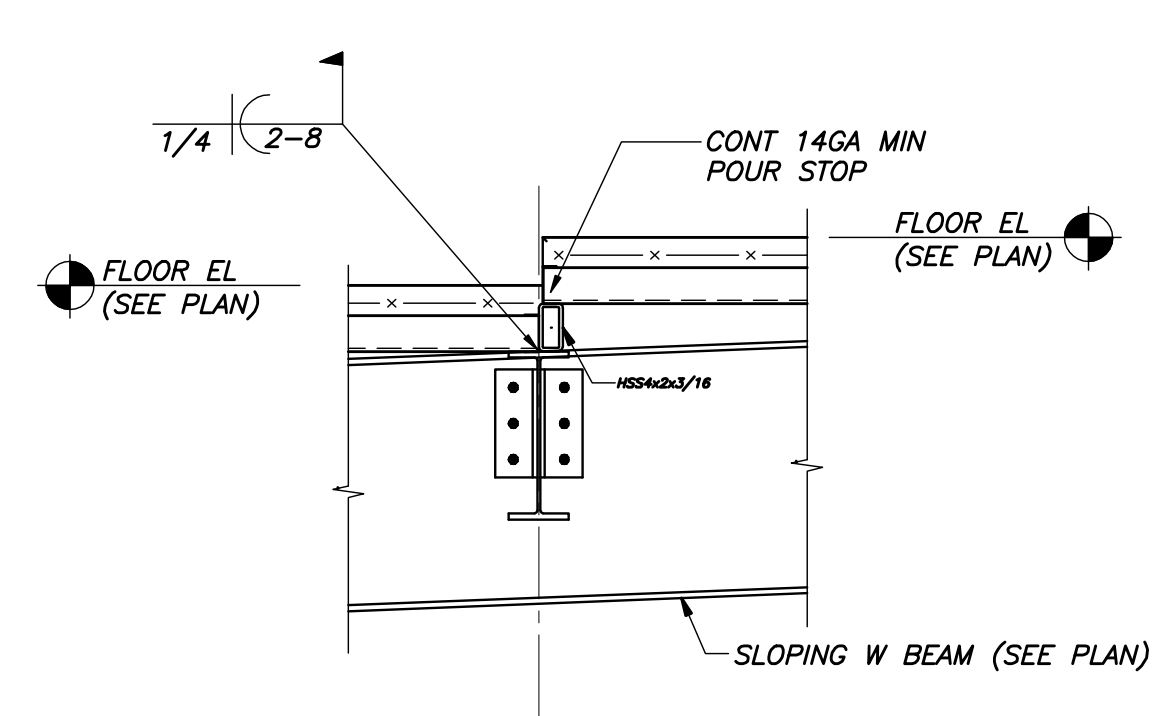
SECTION 7
3/4"=1'-0" S1.3



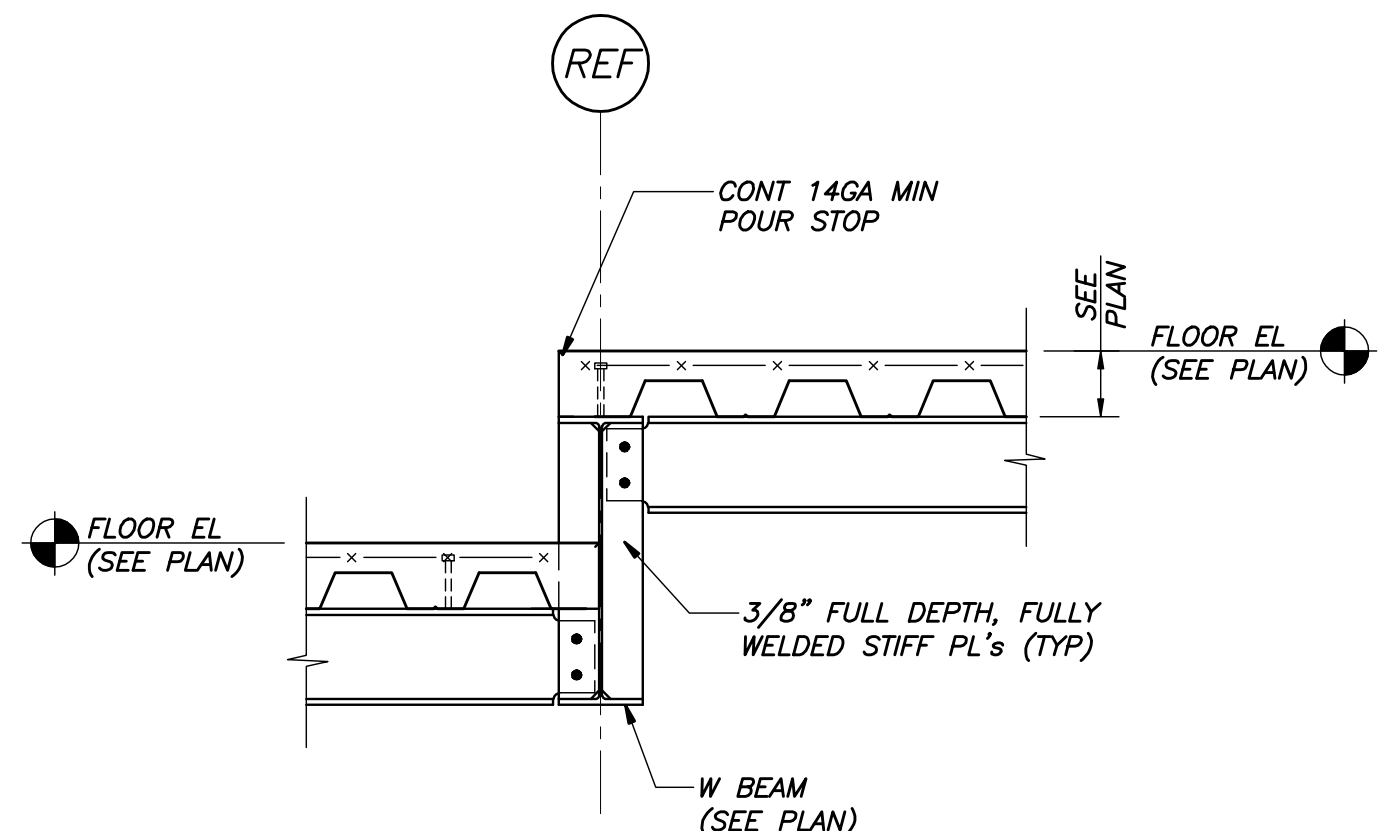
SECTION 8
3/4"=1'-0" S1.3



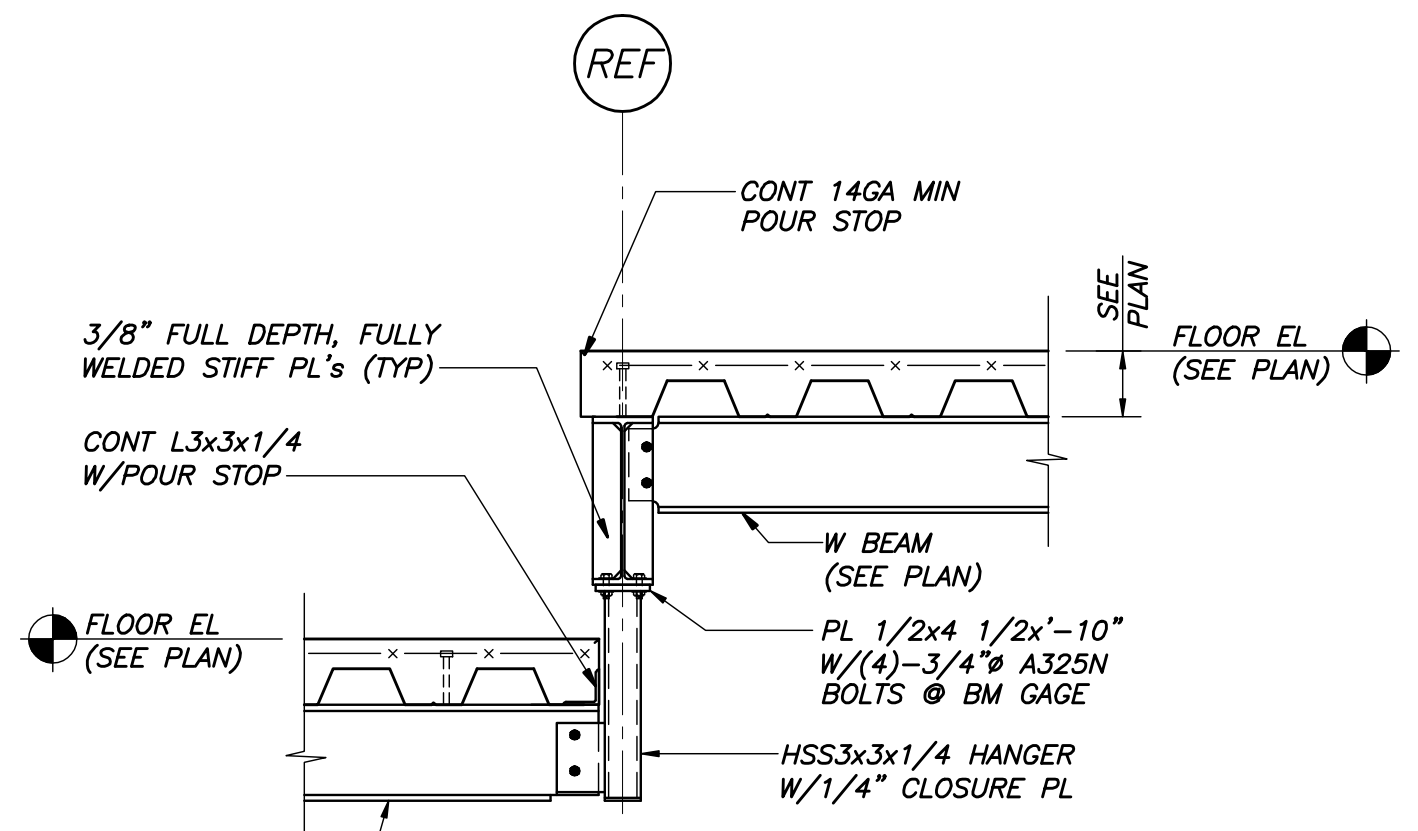
SECTION 9
3/4"=1'-0" S1.2



SECTION 10
3/4"=1'-0" S1.2

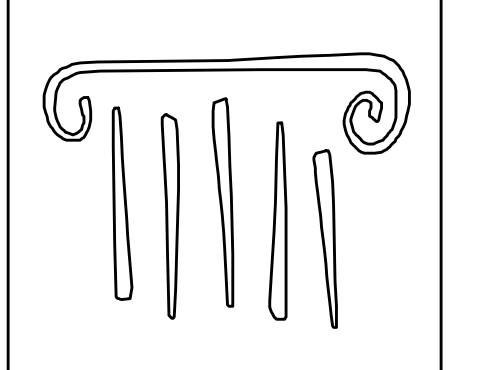


SECTION 11
3/4"=1'-0" S1.2



SECTION 12
3/4"=1'-0" S1.2

NOTE: FOR ADDL INFO, SEE SECT 10/S3.2



PORT CITY ARCHITECTURE

65 NEWBURY STREET
PORTLAND, ME 04101
207.761.9000
fax: 207.761.2010
lita@portcityarch.com



JACOBS CONSULTANCY
GPR Laboratory Planning Practice

VANZELM ENGINEERS
VANZELM TREYWOOD & BRADFORD, INC.

BECKER
Structural Engineers, Inc.

SYTDesign CONSULTANTS
CIVIL ENGINEERING & LANDSCAPE ARCHITECTURE

ALLIED/COOK CONSTRUCTION

Favreau Electric

Titan Mechanical, Inc.
Design Build Engineering - Mechanical Contracting

UNIVERSITY OF NEW ENGLAND

COLLEGE OF PHARMACY

716 STEVENS AVENUE, PORTLAND, ME

#	DATE	DESCRIPTION
		PERMIT SET
	Date Issued	01/24/08
	Project Number	06506

SHEET NAME
FRAMING SECTIONS & DETAILS

Drawn By
APP

Checked By
DSB

S3.2

PERMIT SET - NOT FOR CONSTRUCTION