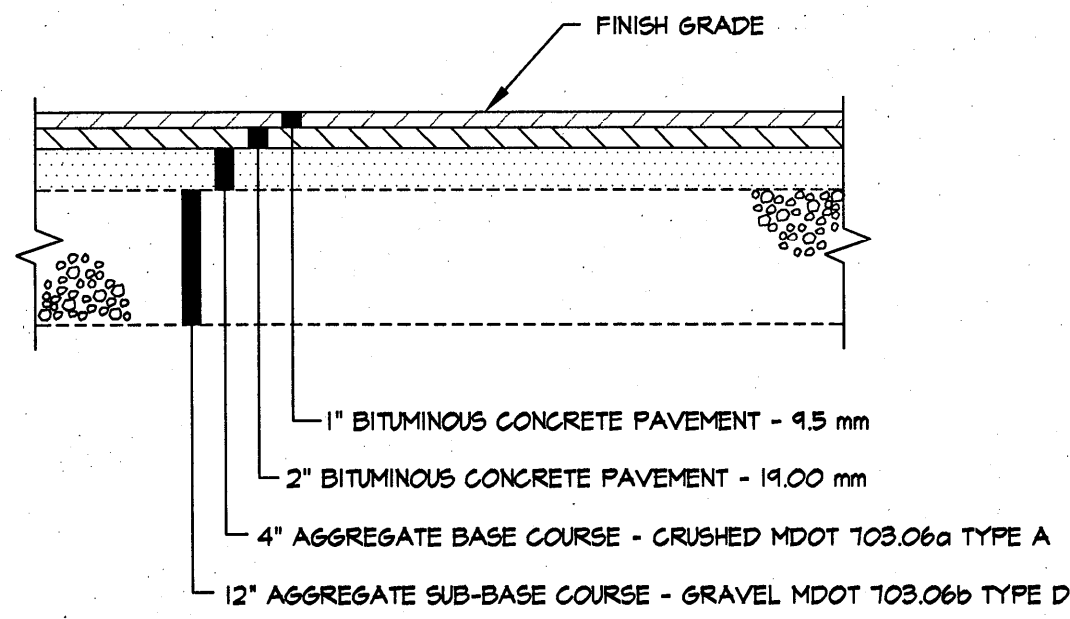
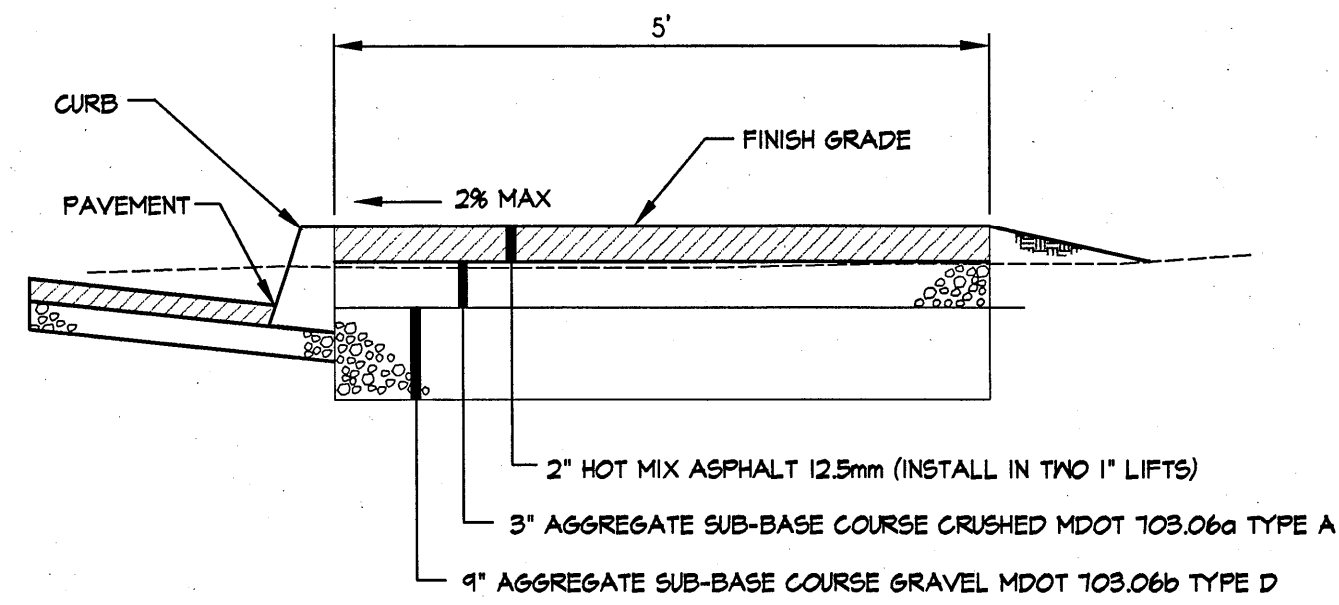


NOTES:

- ADDITIONAL SUBBASE GRAVEL AND/OR GEOTEXTILES MAY BE REQUIRED DURING CONSTRUCTION IF SOIL CONDITIONS WARRANT.
- BUILD-UP RECOMMENDATION IS PRELIMINARY REFER TO GEOTECHNICAL REPORT.



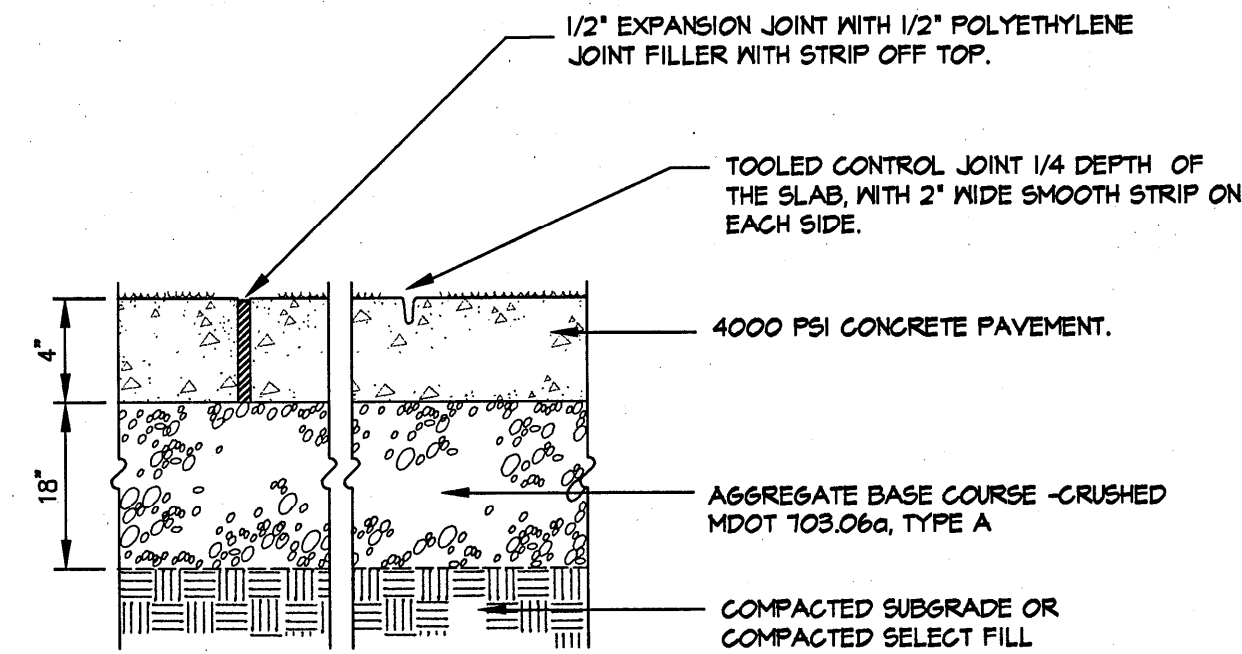
**1** PARKING AREAS AND DRIVE BUILD-UP  
SCALE: N.T.S.



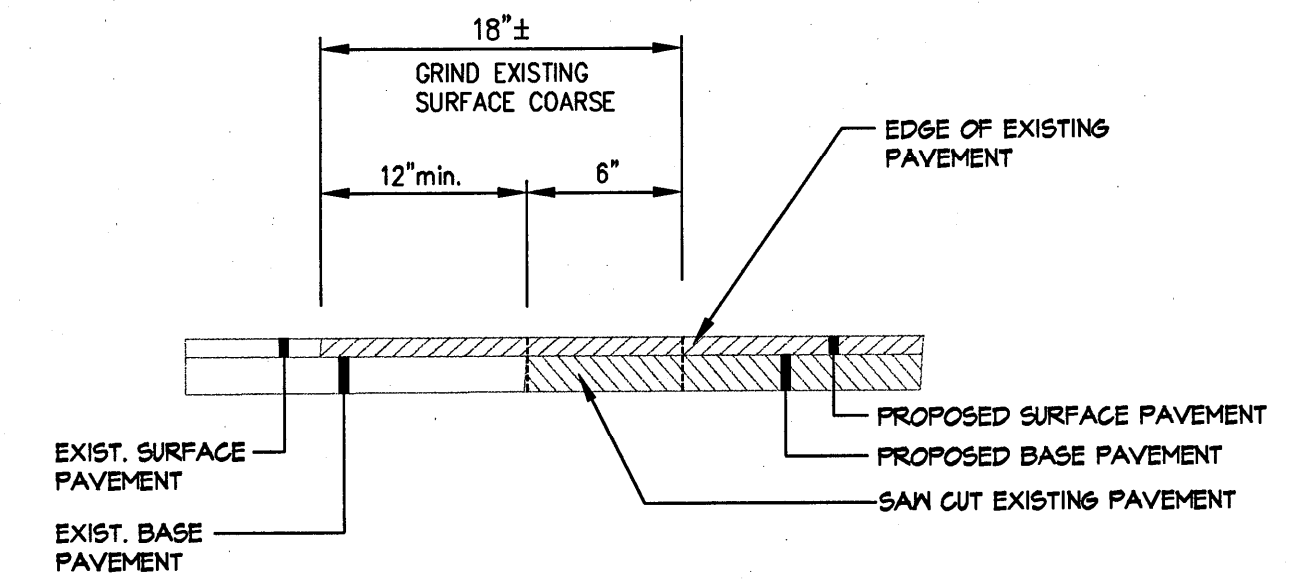
**2** WALKWAY BUILD-UP  
SCALE: N.T.S.

NOTES:

- PROVIDE FIBRULATED POLYPROPYLENE FIBER REINFORCING.
- PROVIDE A BROOM FINISH PERPENDICULAR TO TRAFFIC FLOW.
- WHEN NOT SHOWN ON THE DRAWINGS PROVIDE TOOLED SCORE JOINTS EQUALLY SPACED ALONG WALK, AT INTERVALS APPROXIMATELY EQUAL TO THE SLAB WIDTH. PANELS SHOULD BE AS NEARLY SQUARE AS POSSIBLE.
- PROVIDE FULL DEPTH JOINTS WHERE PAVEMENT ABUTS STRUCTURES AND VERTICAL SURFACES. SEAL ALL EXPANSION JOINTS WITH WATERPROOF SEALANT.



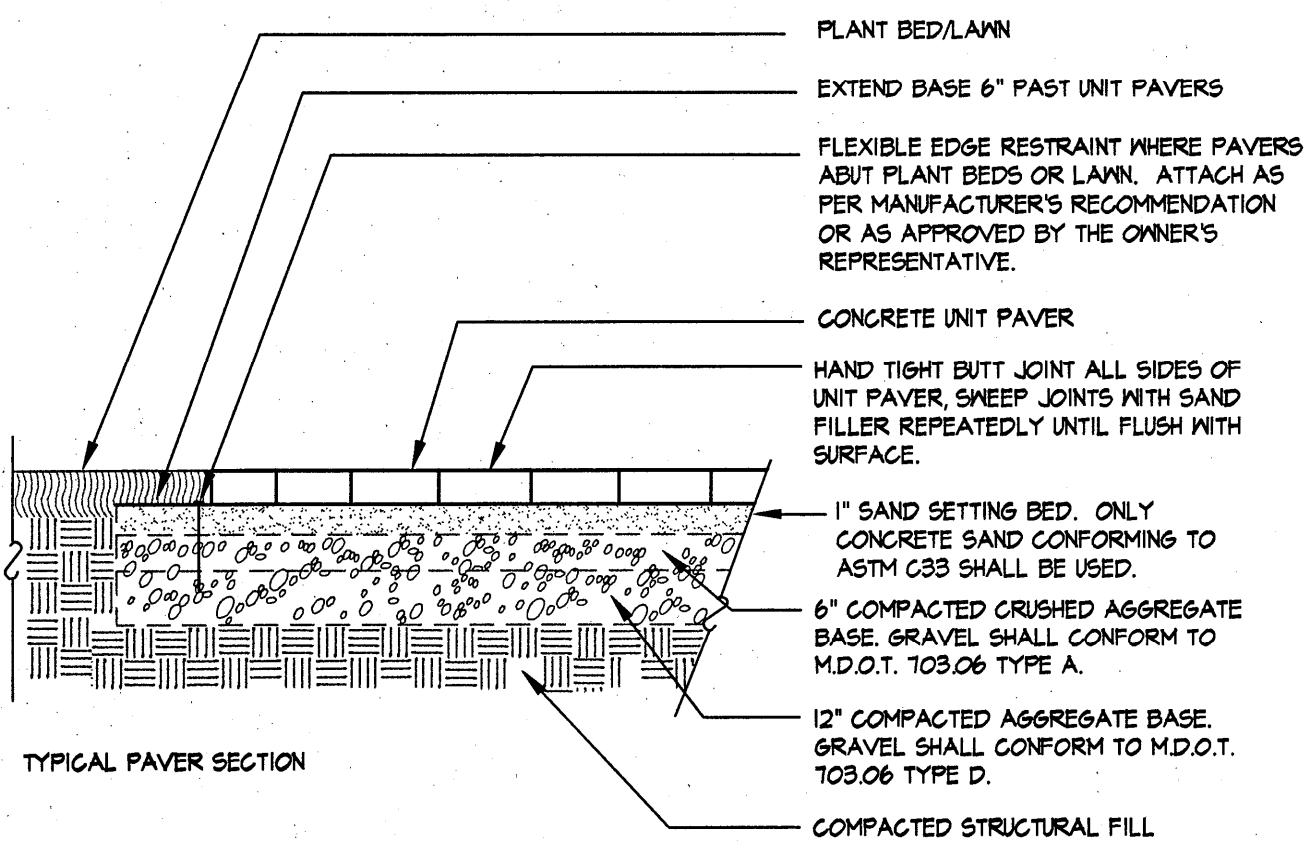
**3** CONCRETE WALK (FRONT ENTRANCE)  
SCALE: N.T.S.



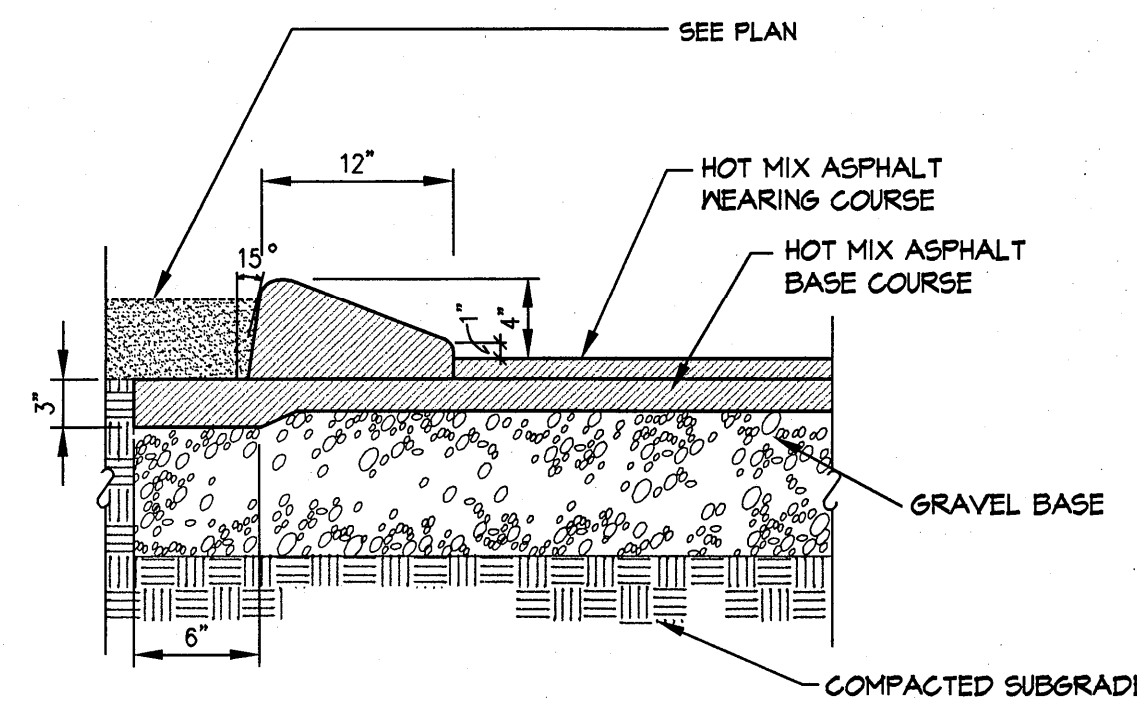
**4** PAVEMENT BUTT JOINT  
SCALE: N.T.S.

NOTES:

- ALL PAVERS SHALL BE SAM CUT ONLY. NO FRAGMENT SHALL BE SMALLER THAN 2". FINAL SURFACE SHALL PITCH TO DRAIN PER GRADING PLAN.
- UNLESS CALLED OUT OTHERWISE ON THE DRAWINGS UNIT PAVERS SHALL BE THE TREVIA TUMBLED PAVES AS MANUFACTURED AND DISTRIBUTED BY GENEST CONCRETE OF SANFORD, MAINE (800) 644-4173. UNIT PAVERS SHALL BE THE ASH CHARCOAL COLOR.



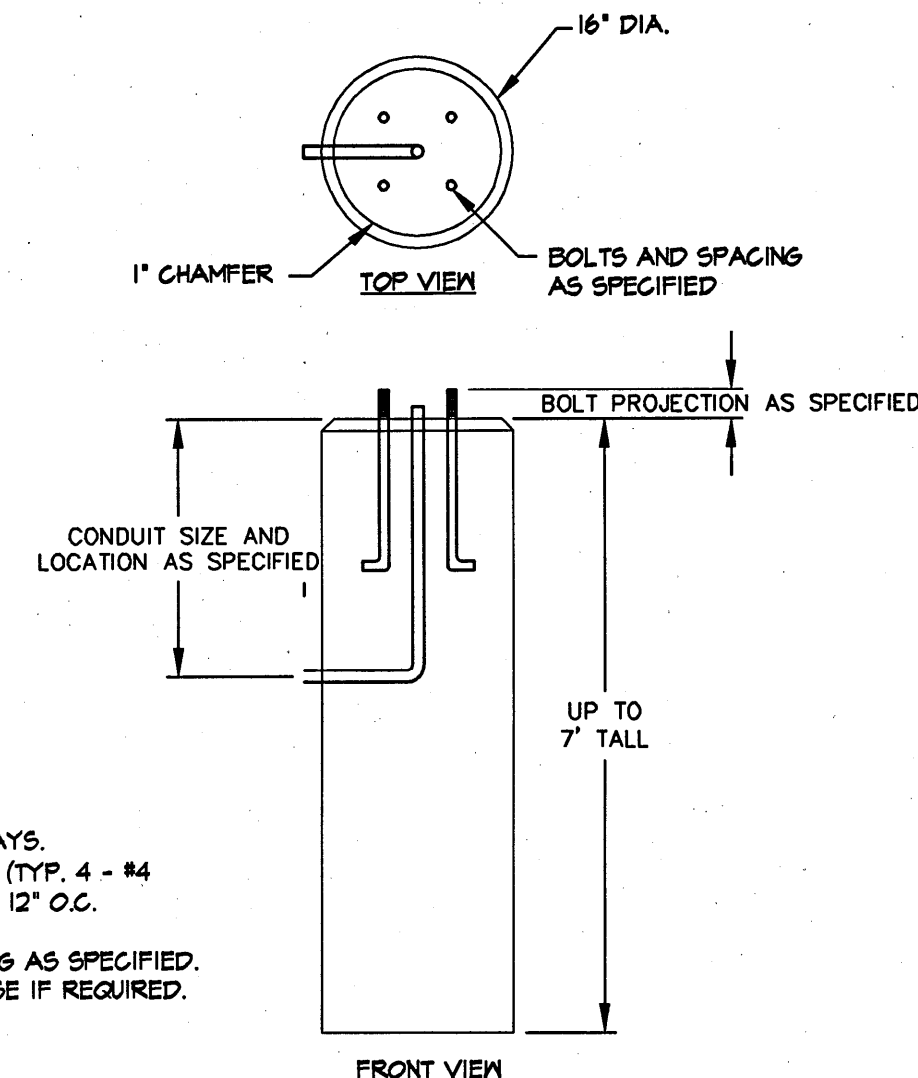
**5** DECORATIVE PAVERS  
SCALE: N.T.S.



**6** CAPE COD ASPHALT BERM  
SCALE: N.T.S.

DESIGN NOTES:

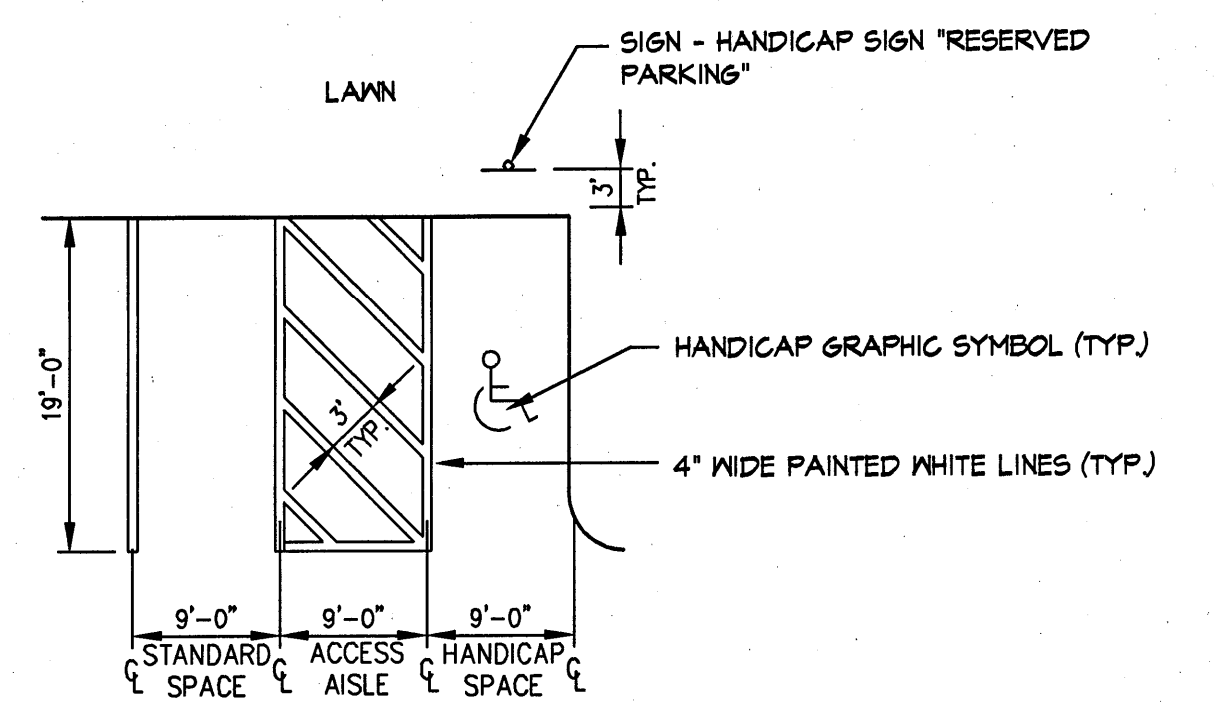
- CONCRETE 4000 PSI AT 28 DAYS.
- REINFORCING IS AS SPECIFIED. (TYP. 4 - #4 VERTICALLY AND #3 STIRRUPS 12" O.C. HORIZONTALLY)
- ANCHOR BOLTS AND GROUNDING AS SPECIFIED.
- BALLAST POURED AROUND BASE IF REQUIRED.



**7** PRECAST CONCRETE LIGHT POLE BASE (16 INCH ROUND)  
SCALE: N.T.S.

NOTES:

- SYMBOLS AND PARKING STALLS SHALL CONFORM TO THE REQUIREMENTS OF THE AMERICANS WITH DISABILITIES ACT. ALL PAINT SHALL BE FAST DRYING TRAFFIC PAINT WITH SILICA SAND.
- FOR SKID RESISTANCE, MEETING THE REQUIREMENTS OF ASHTO M248-TYPE N. PAINT SHALL BE APPLIED AS SPECIFIED BY THE MANUFACTURER.

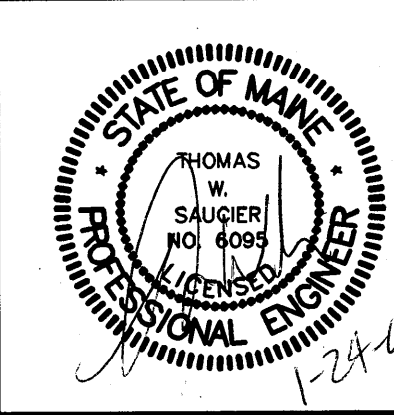


**8** HANDICAP PARKING SPACE LAYOUT (2)  
SCALE: N.T.S.

Drawing Name: P:\2008\PROJECTS\08-2108.DWG - College Of Pharmacy\08-2108.DWG / Title: Jan 26, 08 / 8:33 AM

THIS PLAN SHALL NOT BE MODIFIED WITHOUT WRITTEN PERMISSION FROM SYTDesign Consultants, ANY ALTERATIONS, OTHERWISE, SHALL BE AT THE USER'S SOLE RISK AND WITHOUT LIABILITY TO SYTDesign Consultants.

REV.	DATE	STATUS	BY	CHKD	APPD	REV.	DATE	STATUS	BY	CHKD	APPD	
G	12/20/07	SUBMITTED TO THE CITY OF PORTLAND FOR SITE PLAN REVIEW	WTE	PBB	TWS							
F	12/06/07	ISSUED FOR DESIGN DEVELOPMENT	WTE	PBB	TWS							
E	11/27/07	ISSUED TO ARCHITECT FOR CHECK SET	PBB	PBB	TWS							
C	10/19/07	ISSUED FOR SCHEMATIC DESIGN	PBB	PBB	TWS							
B	10/12/07	REVISED AND SUBMITTED TO THE CITY OF PORTLAND FOR SITE PLAN REVIEW	PBB	PBB	TWS	I	1/24/08	PERMIT SET		PBB	PBB	TWS
A	09/04/07	SUBMITTED FOR SITE PLAN REVIEW	DAM	PBB	TWS	H	1/15/08	REVISED PER CITY OF PORTLAND PEER REVIEW COMMENTS		PBB	PBB	TWS



**SYTDesign CONSULTANTS**  
CIVIL ENGINEERING & LANDSCAPE ARCHITECTURE  
160 Longwoods Road  
Cumberland, Maine 04021  
tel. 207.829.6994 fax. 207.829.2231

CLIENT:  
**UNIVERSITY OF NEW ENGLAND**  
11 HILLS BEACH ROAD, BIDDEFORD, MAINE 04005

DESIGN: JAV	COLLEGE OF PHARMACY 716 STEVENS AVENUE, PORTLAND, MAINE 04103	
DRAWN: JAV	SITE DETAILS	
CHKD: ADJ	DATE: OCTOBER 2007	PROJ. NO. 06-21608
	SCALE: N.T.S.	DWG. NO. C-301
		REV. 1

NOT FOR CONSTRUCTION