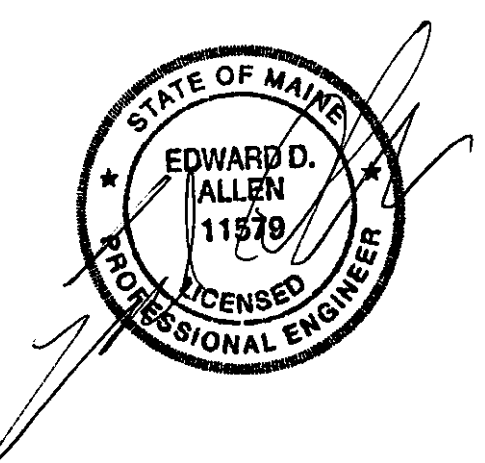


PORT CITY ARCHITECTURE

65 NEWBURY STREET
PORTLAND, ME 04101
207.761.9000
fax: 207.761.2010
lita@portcityarch.com



VANZELM
ENGINEERS

VANZELM HEYWOOD & SHADFORD, INC.
10 TALCOTT NOTCH FARMINGTON, CT 06032
TEL: (860)284-3964 FAX: (860)284-3968
PROJECT NO.: 2007120.00

BECKER
structural engineers, inc.

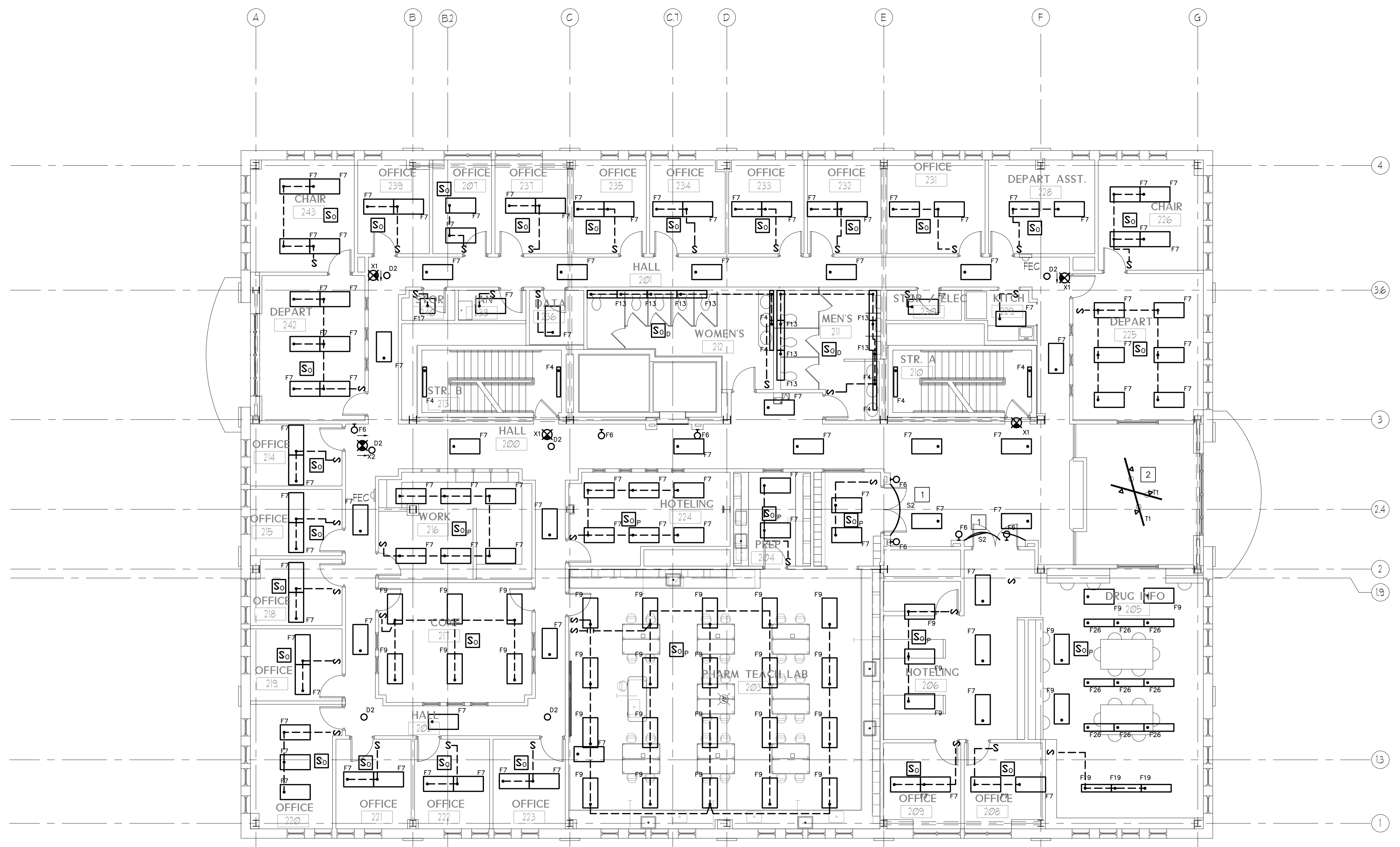
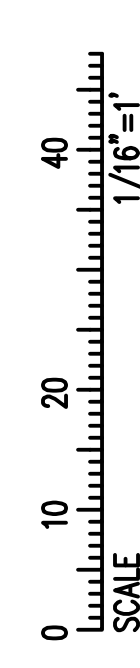
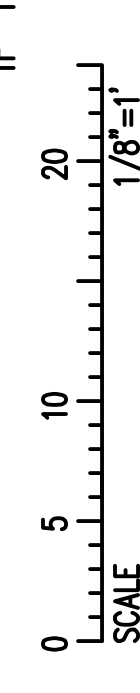
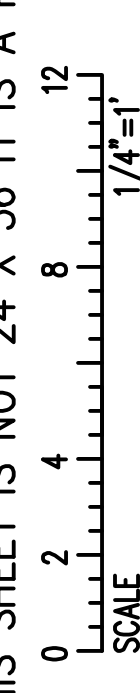
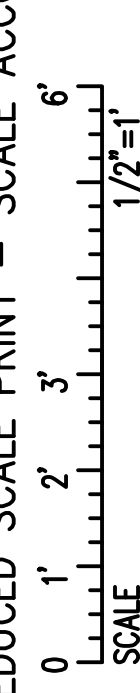
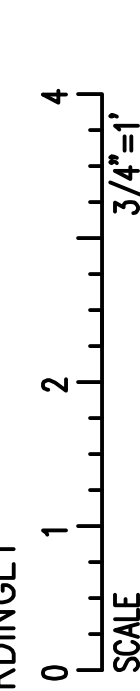
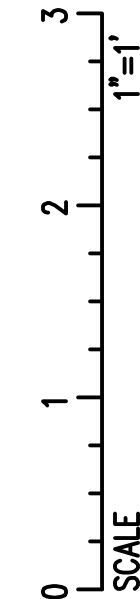
SYTDesign
CONSULTANTS
CIVIL ENGINEERING & LANDSCAPE ARCHITECTURE

ALLIED/COOK
CONSTRUCTION

Favreau
MECHANICAL

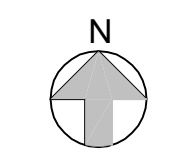
Titan Mechanical, Inc.
Design-Build Engineering - Mechanical Contracting

IF THIS SHEET IS NOT 24 X 36 IT IS A REDUCED SCALE PRINT - SCALE ACCORDINGLY



1 SECOND FLOOR LIGHTING PLAN
Scale: 1/8"=1'-0"

KEYED NOTES:
1. LED ROPE LIGHT INSTALLED ABOVE SIGN. TYPICAL 5 LOCATIONS.
2. TRACK LIGHTING. COORDINATE WITH INSTALLER.



PERMIT SET - NOT FOR CONSTRUCTION

Drawn By
AMM
Checked By
MER
EL.1.3