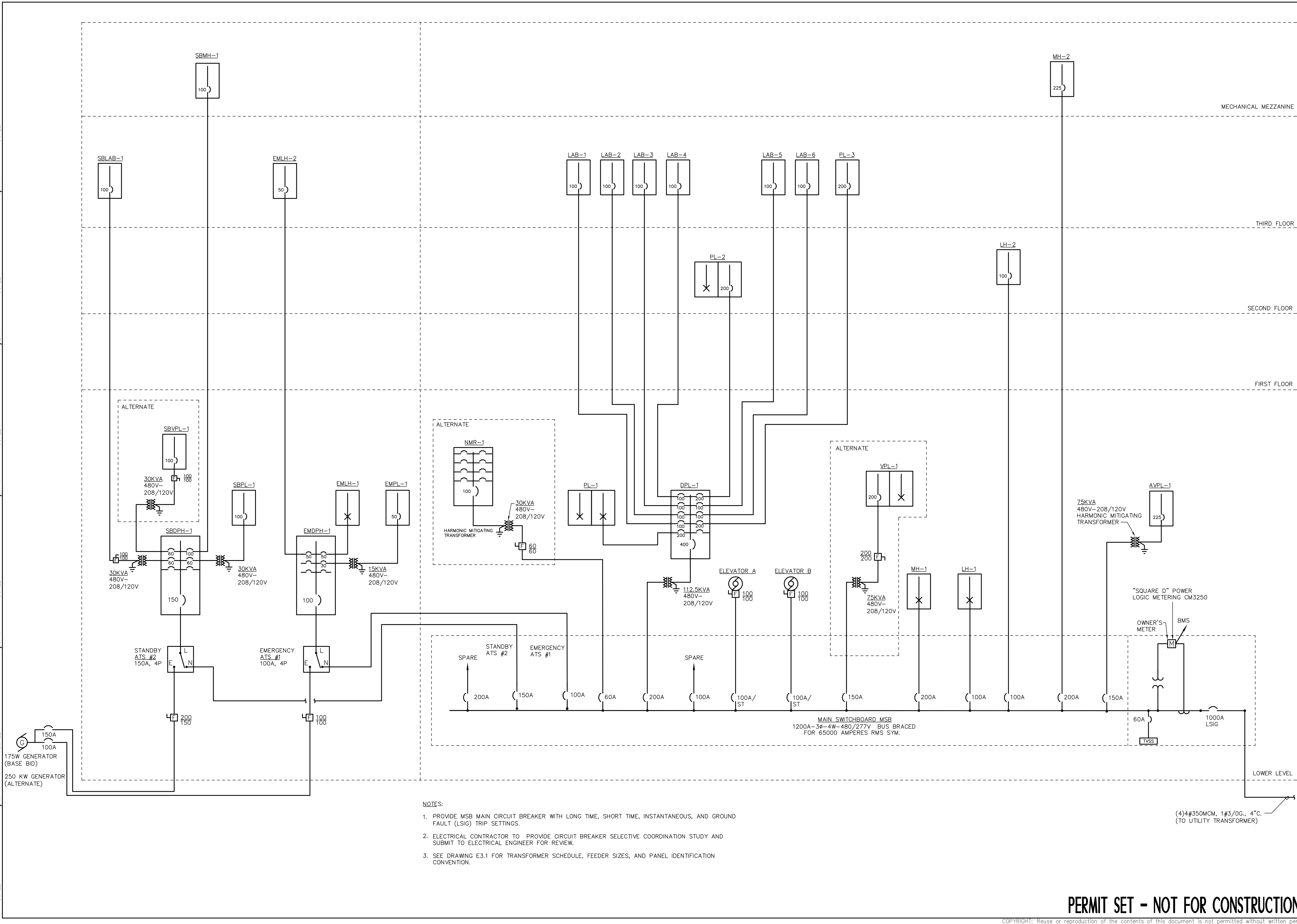
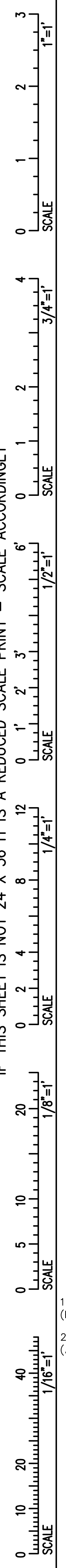
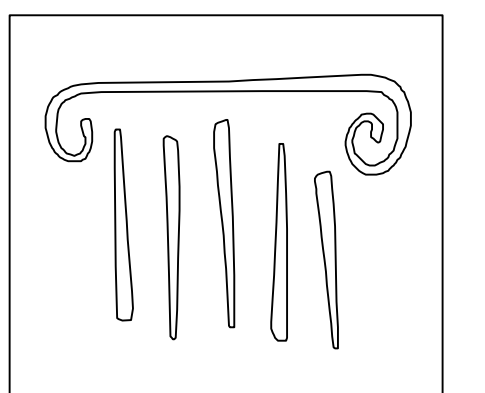


IF THIS SHEET IS NOT 24 X 36 IT IS A REDUCED SCALE PRINT - SCALE ACCORDINGLY

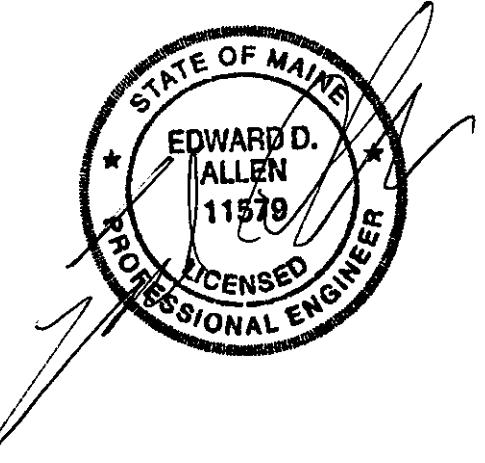


- NOTES:
1. PROVIDE MSB MAIN CIRCUIT BREAKER WITH LONG TIME, SHORT TIME, INSTANTANEOUS, AND GROUND FAULT (LSIG) TRIP SETTINGS.
  2. ELECTRICAL CONTRACTOR TO PROVIDE CIRCUIT BREAKER SELECTIVE COORDINATION STUDY AND SUBMIT TO ELECTRICAL ENGINEER FOR REVIEW.
  3. SEE DRAWING E.3.1 FOR TRANSFORMER SCHEDULE, FEEDER SIZES, AND PANEL IDENTIFICATION CONVENTION.



**PORT CITY ARCHITECTURE**

65 NEWBURY STREET  
 PORTLAND, ME 04101  
 207.761.9000  
 fax: 207.761.2010  
 lita@portcityarch.com



**VANZELM ENGINEERS**

VANZELM HEYWOOD & SHADFORD, INC.  
 10 TALCOTT NOTCH FARMINGTON, CT 06032  
 TEL: (860)284-5064 FAX: (860)284-5066  
 PROJECT NO.: 2007120.00

**BECKER structural engineers, inc.**

**SYTDesign CONSULTANTS**  
 CIVIL ENGINEERING & LANDSCAPE ARCHITECTURE



#	DATE	DESCRIPTION
		PERMIT SET
	01/24/08	Date Issued
	06506	Project Number

SHEET NAME  
**ELECTRICAL POWER RISER DIAGRAM**

Drawn By  
 AMM  
 Checked By  
 MER  
**E3.0**

**PERMIT SET - NOT FOR CONSTRUCTION**