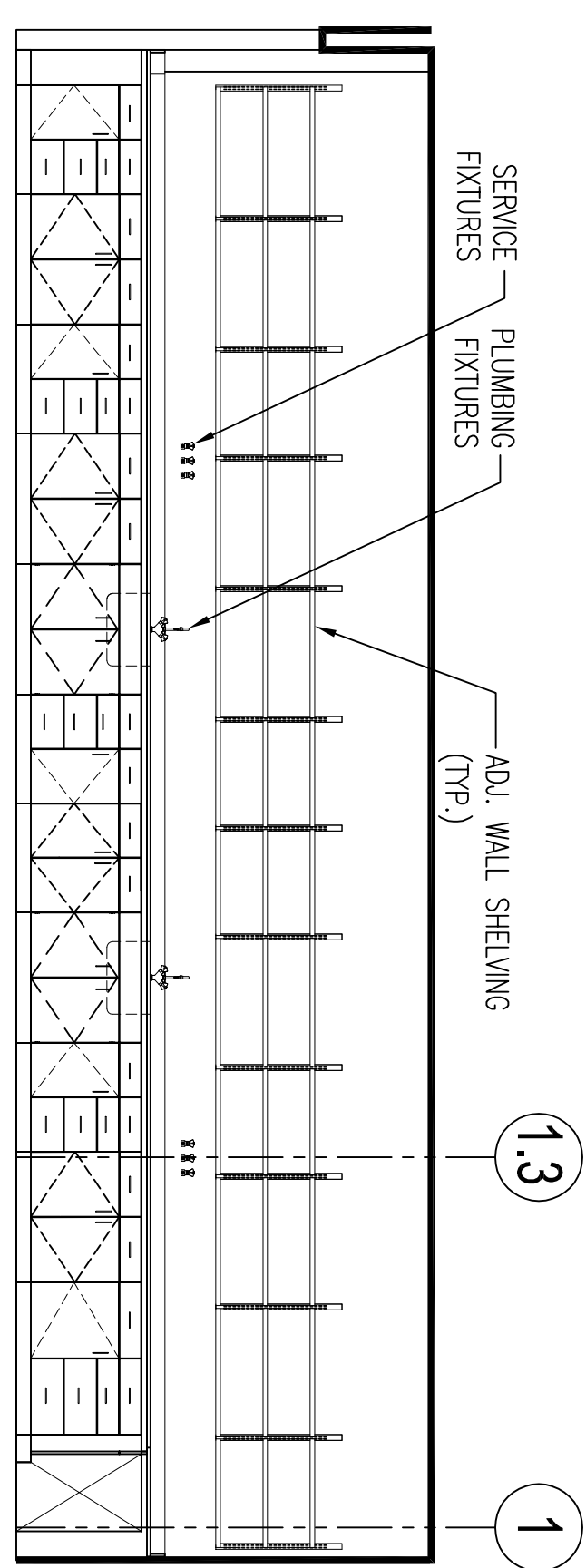


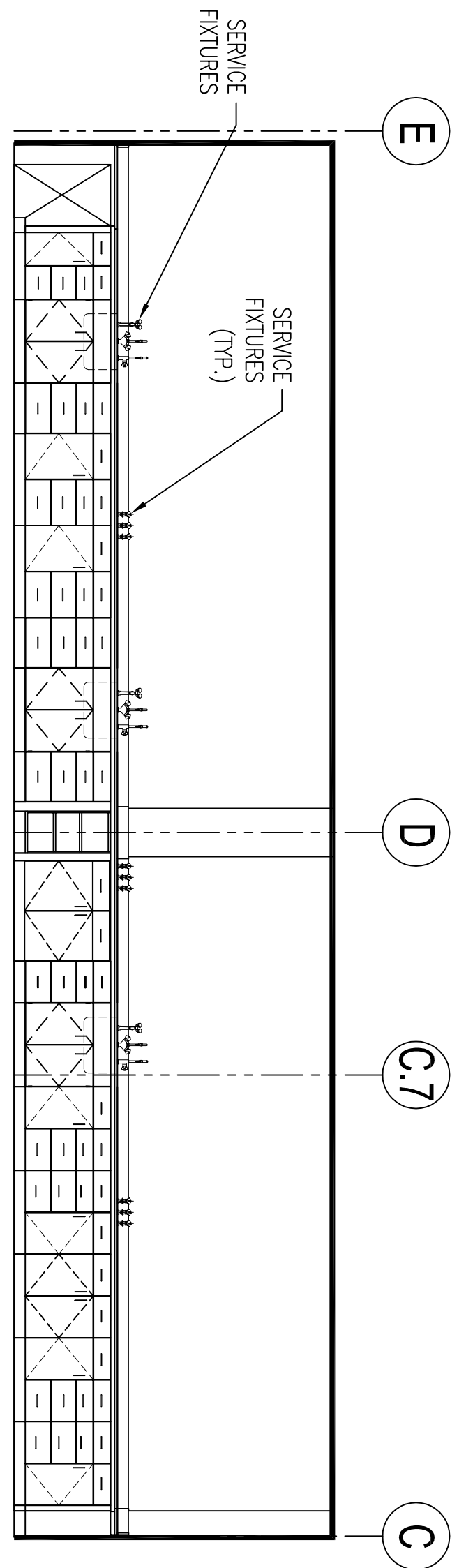
NOT IN USE
SCALE: 1/4" = 1'-0"

5 PHARM TEACHING LAB 203
SCALE: 1/4" = 1'-0"



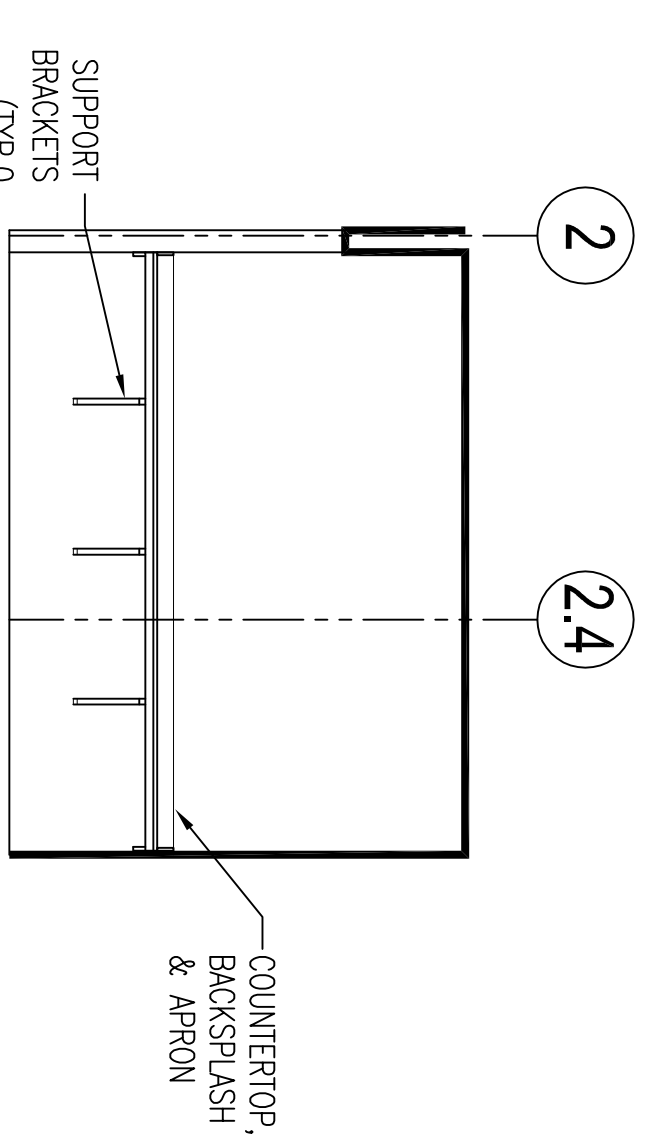
NOT IN USE
SCALE: 1/4" = 1'-0"

6 PHARM TEACHING LAB 203
SCALE: 1/4" = 1'-0"

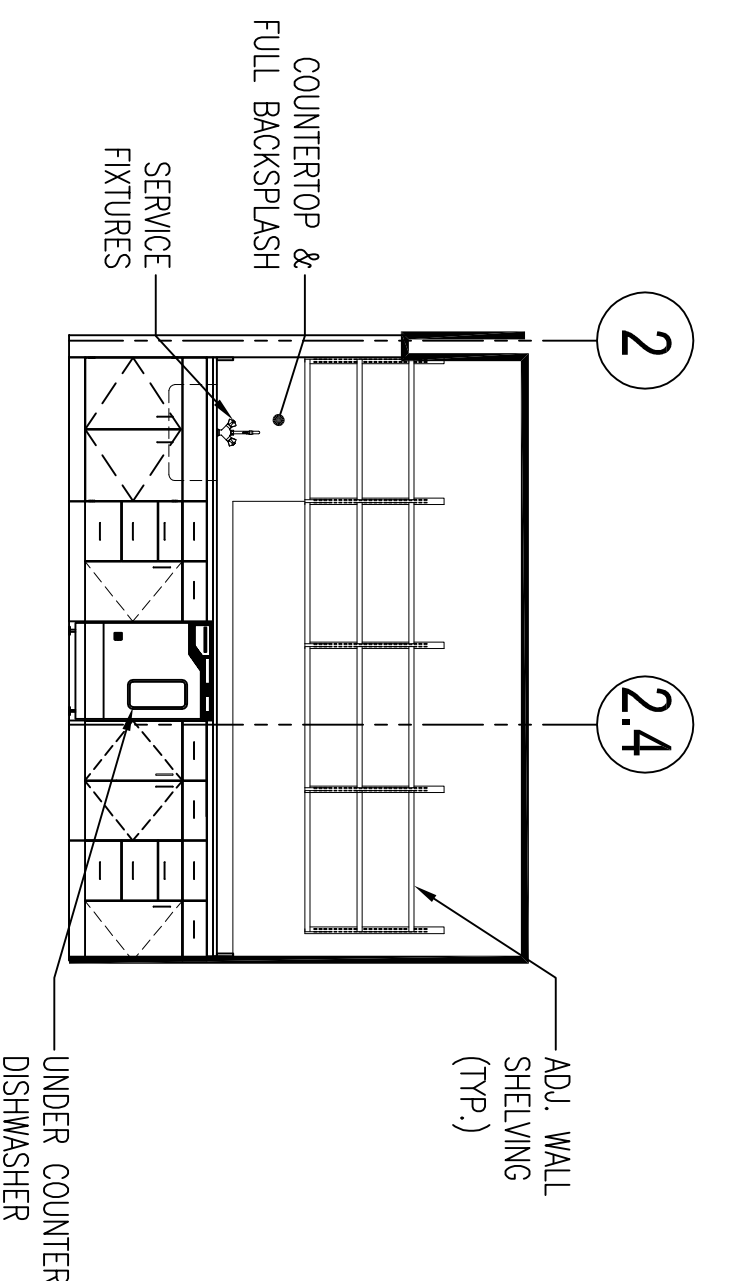


NOT IN USE
SCALE: 1/4" = 1'-0"

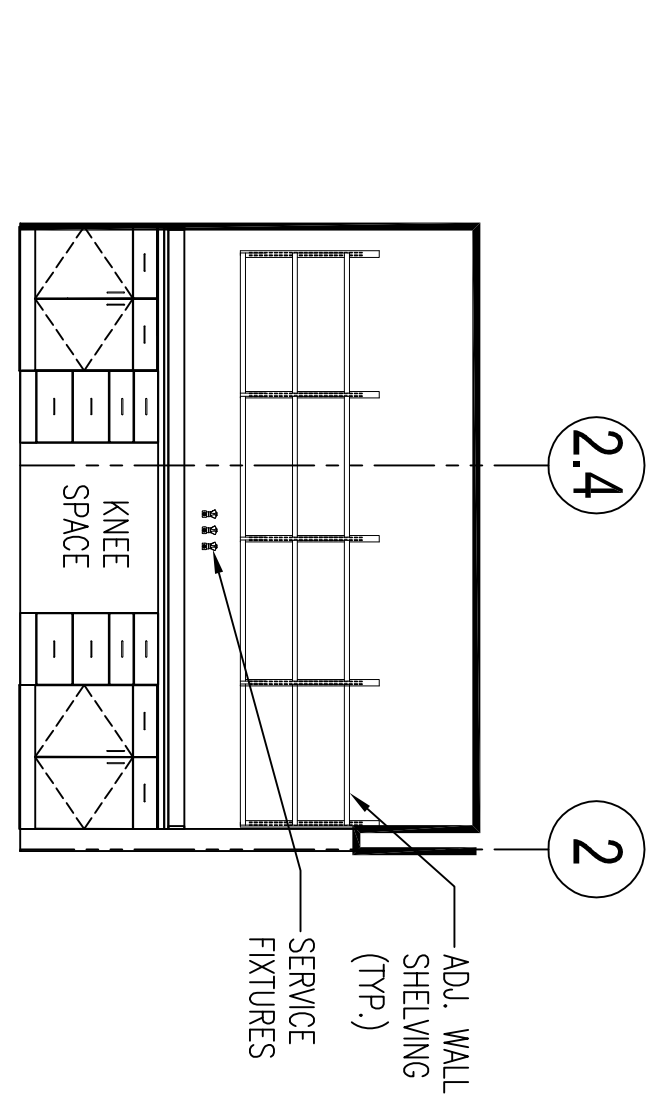
7 PHARM TEACHING LAB 203
SCALE: 1/4" = 1'-0"



1 PHARM TEACHING LAB 203
SCALE: 1/4" = 1'-0"



2 PREP ROOM 204
SCALE: 1/4" = 1'-0"

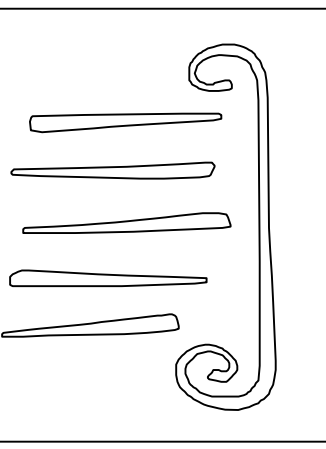


3 PREP ROOM 204
SCALE: 1/4" = 1'-0"

NOT IN USE
SCALE: 1/4" = 1'-0"

NOT IN USE
SCALE: 1/4" = 1'-0"

NOT IN USE
SCALE: 1/4" = 1'-0"



65 NEWBURY STREET
PORTLAND, ME 04101
207.761.9000
fax: 207.761.2010
lit@portcityarch.com

JACOBS CONSULTANCY
OUR LABORATORY PLANNING PARTNER

VANZBELM
VANZBELM BROTHERS & SONS, INC.
LABORATORY PLANNING PARTNER

BECKER
BECKER ENGINEERS, INC.
LABORATORY PLANNING PARTNER

SYTDesign CONSULTANTS
OFFICE ENGINEERING & LABORATORY ARCHITECTURE

UNIVERSITY OF NEW ENGLAND

COLLEGE OF PHARMACY

716 STEVENS AVENUE, PORTLAND, ME

2 ND FLOOR ELEVATIONS

Drawn By: F2.2
Checked By: F2.2

#	DATE	DESCRIPTION
A	12/07/07	ISSUED FOR 100% DD SET
DESIGN DOCUMENT SET		
Date issued: 11/21/07		
Project Number: 06506		