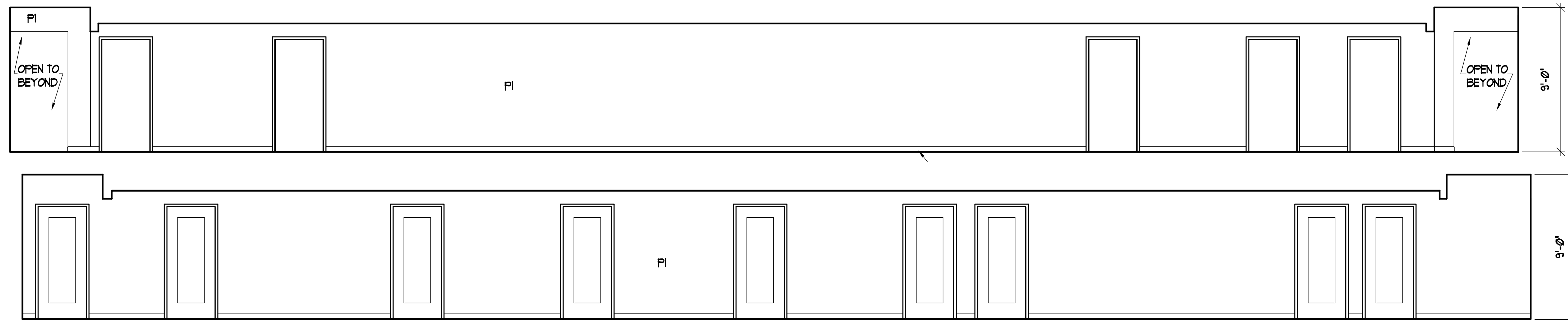
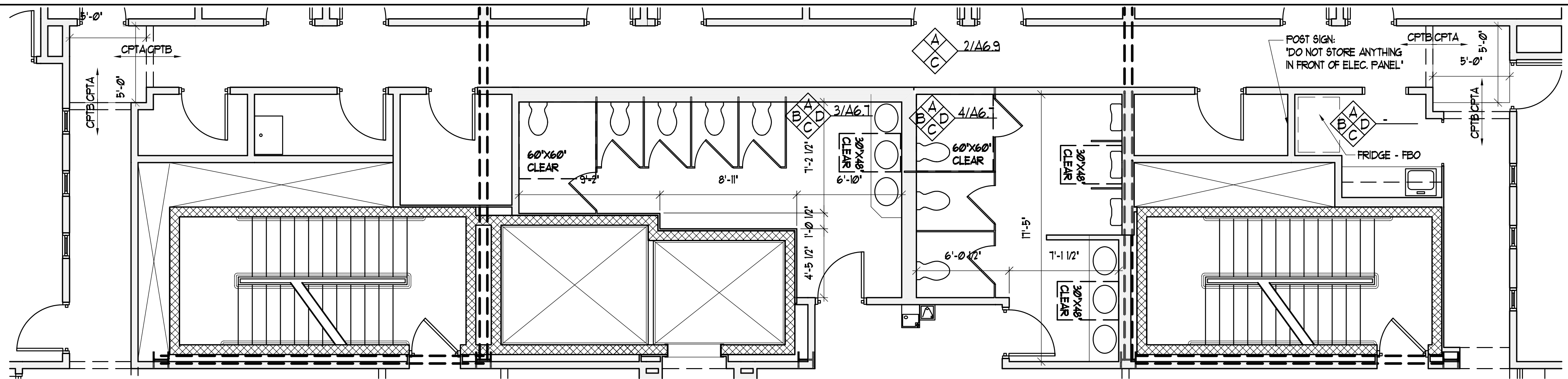
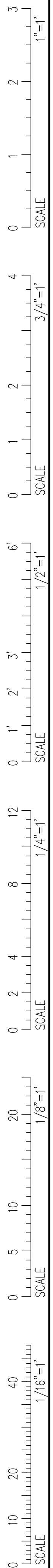
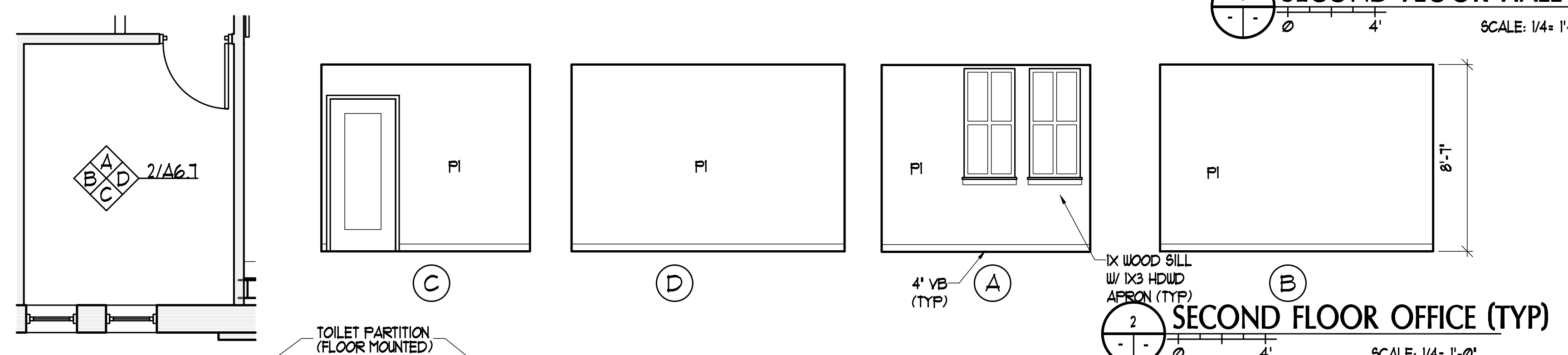


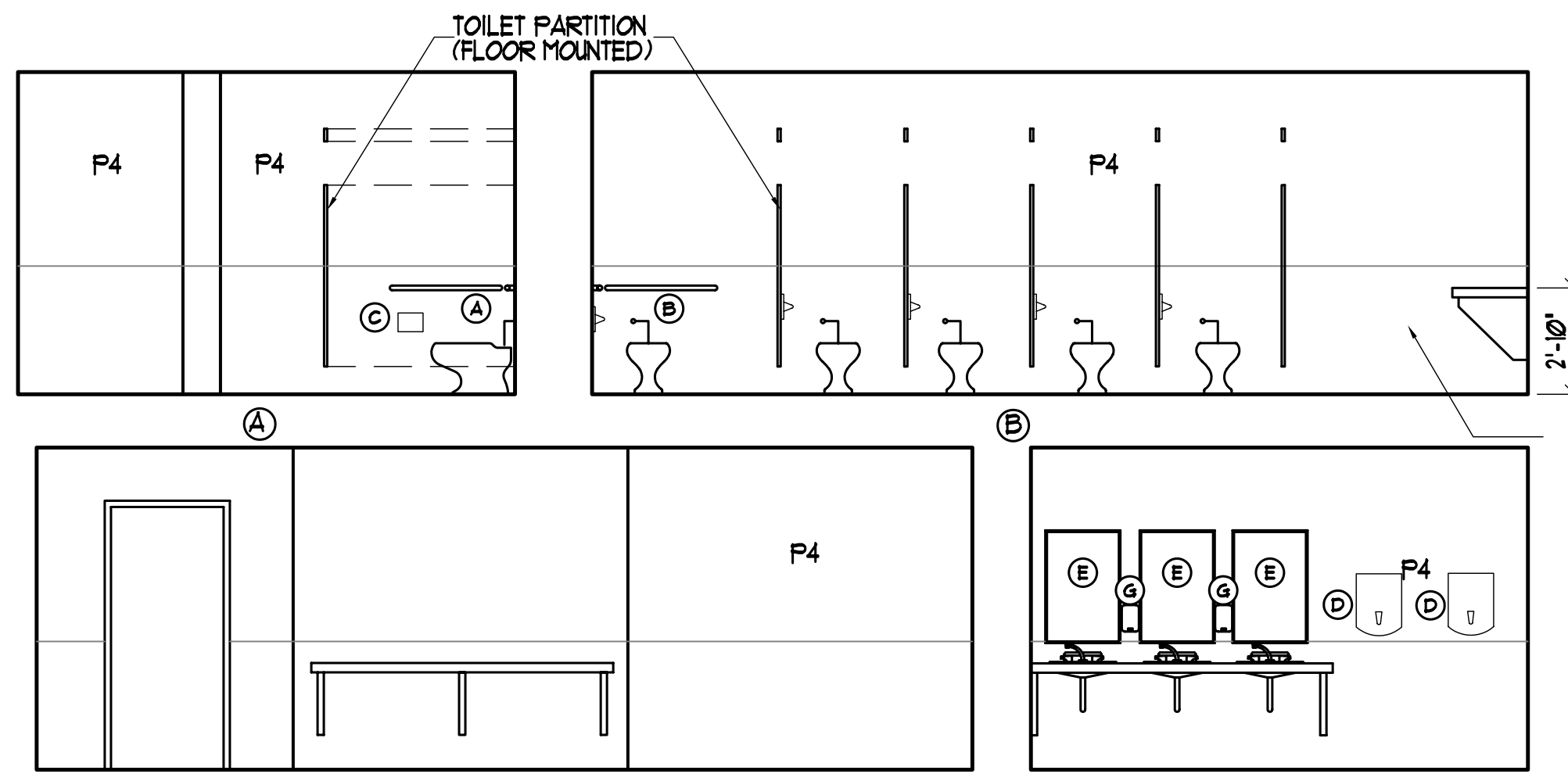
IF THIS SHEET IS NOT 24 X 36 IT IS A REDUCED SCALE PRINT - SCALE ACCORDINGLY



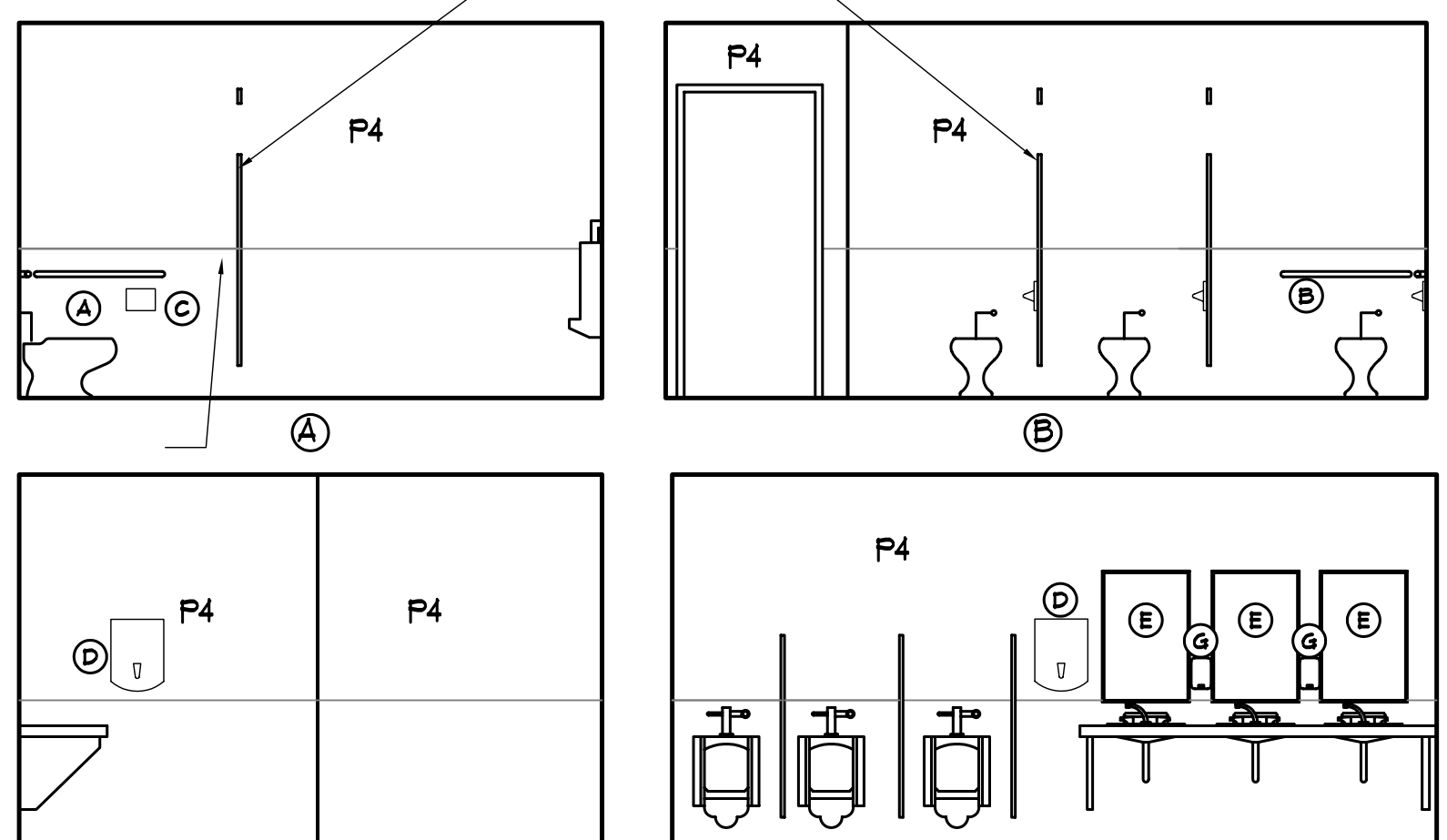
1 SECOND FLOOR HALL  
SCALE: 1/4" = 1'-0"



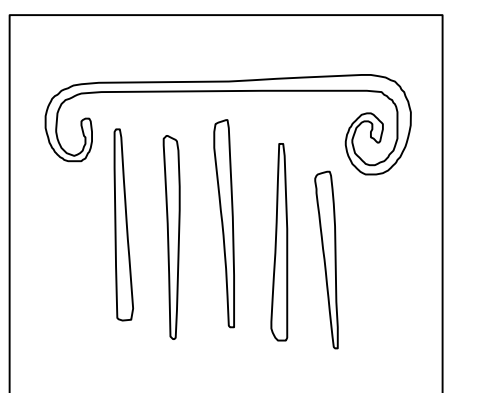
2 SECOND FLOOR OFFICE (TYP)  
SCALE: 1/4" = 1'-0"



3 WOMEN'S BATHROOM  
SCALE: 1/4" = 1'-0"



4 MEN'S BATHROOM  
SCALE: 1/4" = 1'-0"



PORT CITY ARCHITECTURE

65 NEWBURY STREET  
PORTLAND, ME 04101  
207.761.9000  
fax: 207.761.2010  
lita@portcityarch.com

JACOBS CONSULTANCY  
GPR Laboratory Planning Practice

VANZELM  
STRUCTURAL ENGINEERS, INC.

BECKER  
STRUCTURAL ENGINEERS, INC.

SYTDesign  
CONSULTANTS  
CIVIL ENGINEERING & LANDSCAPE ARCHITECTURE

ALLIED/COOK  
CONSTRUCTION

Favreau  
ARCHITECTS

Titan Mechanical  
MECHANICAL CONTRACTORS

UNIVERSITY OF NEW ENGLAND  
COLLEGE OF PHARMACY

716 STEVENS AVENUE, PORTLAND, ME

DATE	DESCRIPTION
01/24/08	PERMIT SET

Date Issued 01/24/08

Project Number 06506

FREESTANDING SHEET NAME

INTERIOR ELEVATIONS

Drawn By EAC / ANM

Checked By LAS

A6.7

PERMIT SET - NOT FOR CONSTRUCTION

COPYRIGHT: Reuse or reproduction of the contents of this document is not permitted without written permission of PORT CITY ARCHITECTURE PA