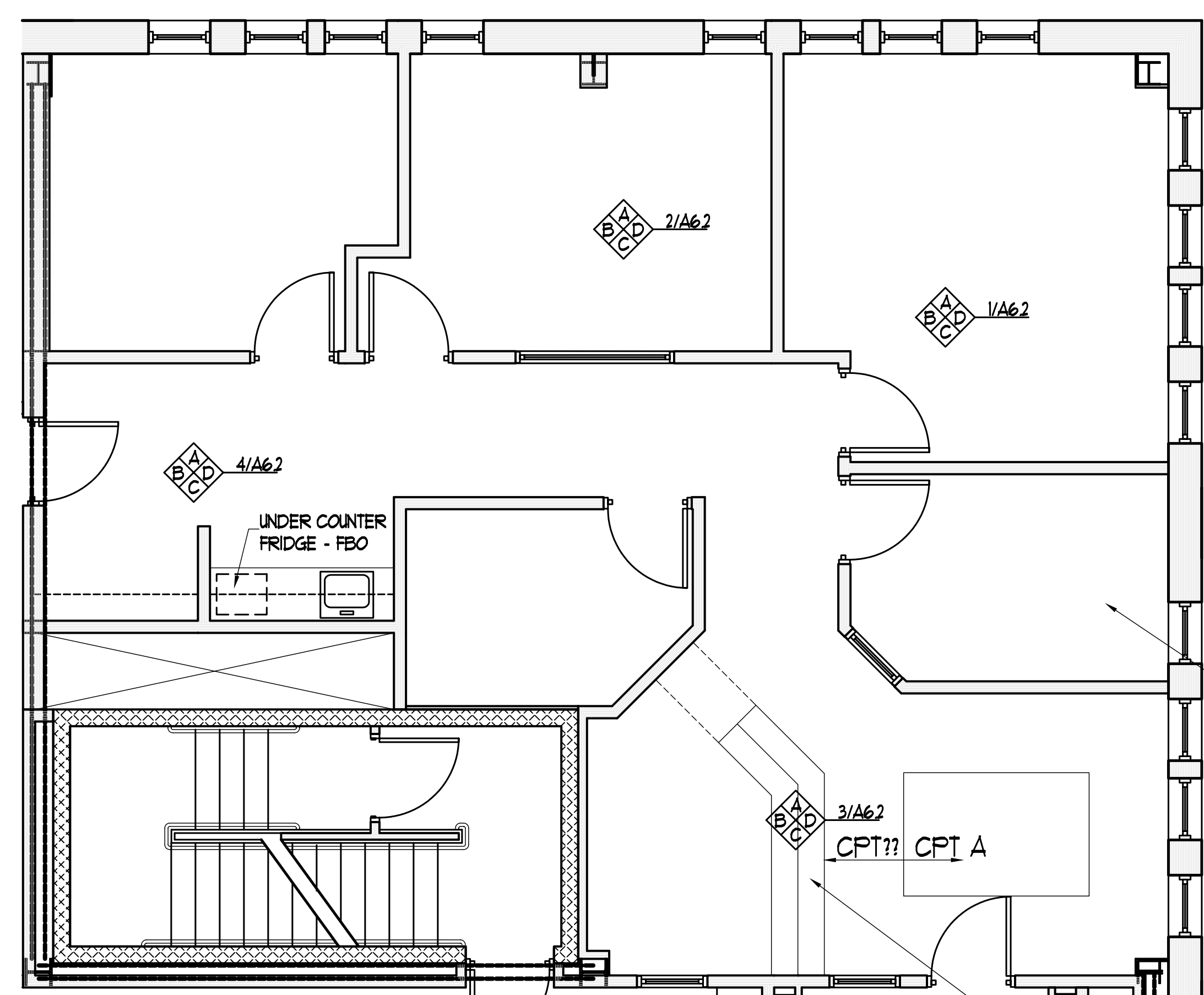
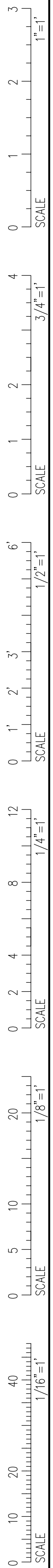
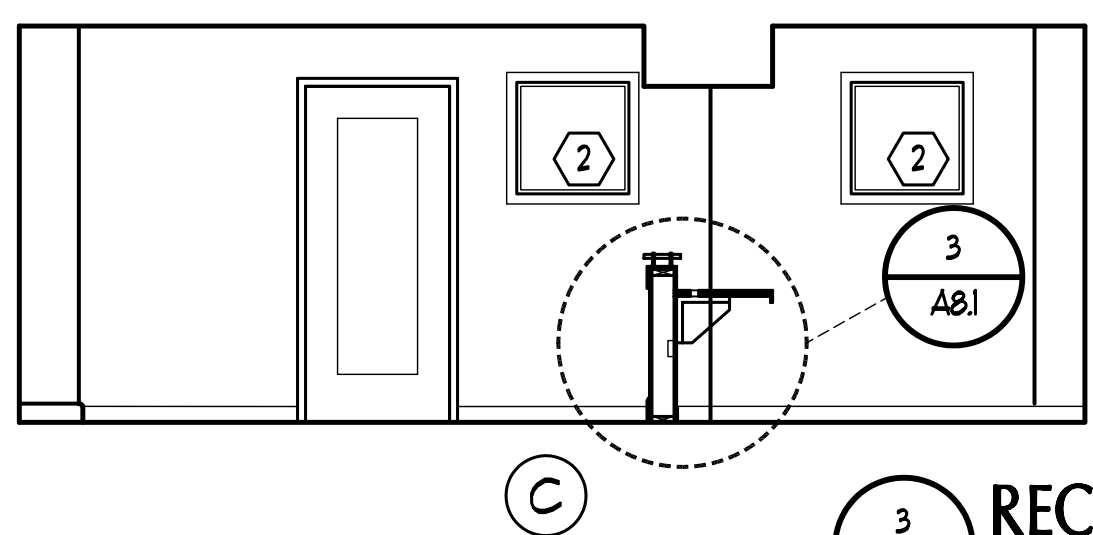
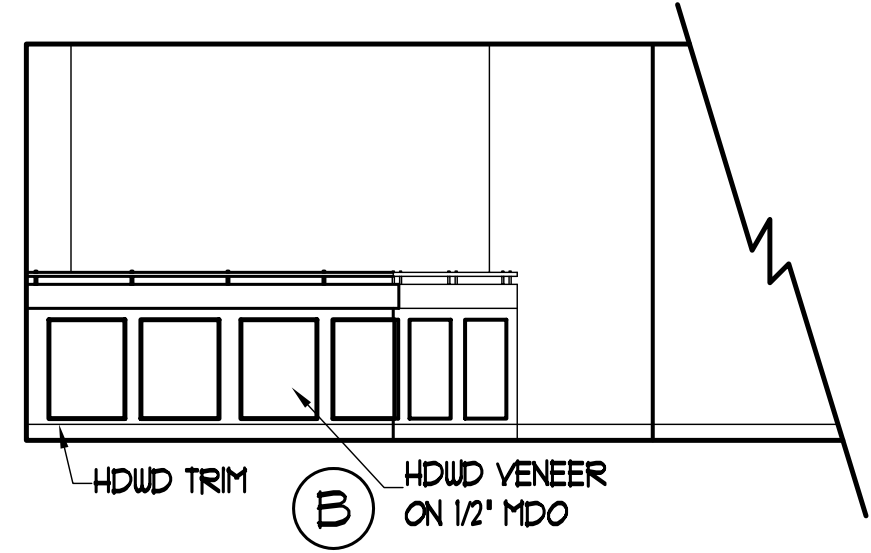
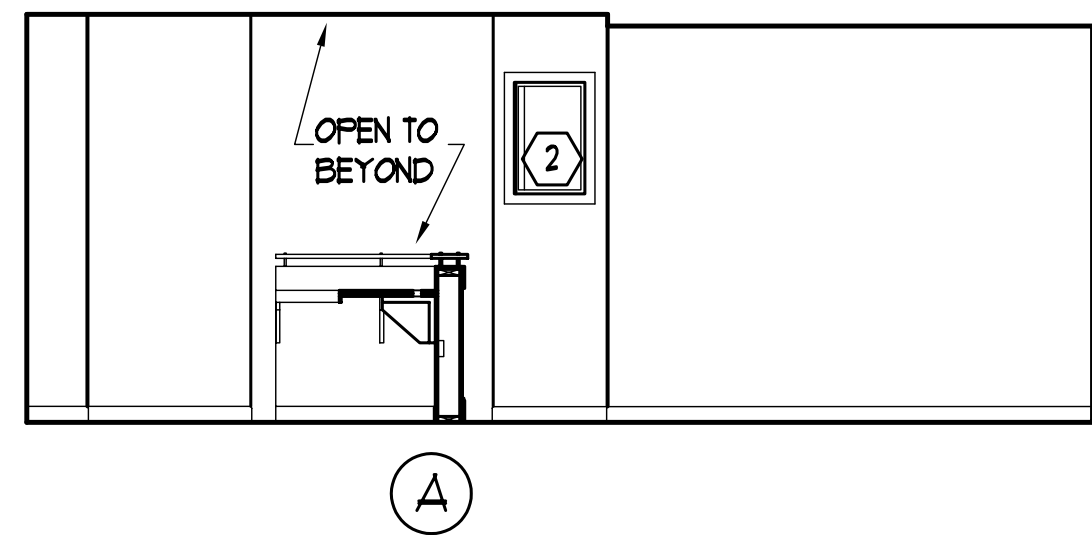


IF THIS SHEET IS NOT 24 X 36 IT IS A REDUCED SCALE PRINT - SCALE ACCORDINGLY

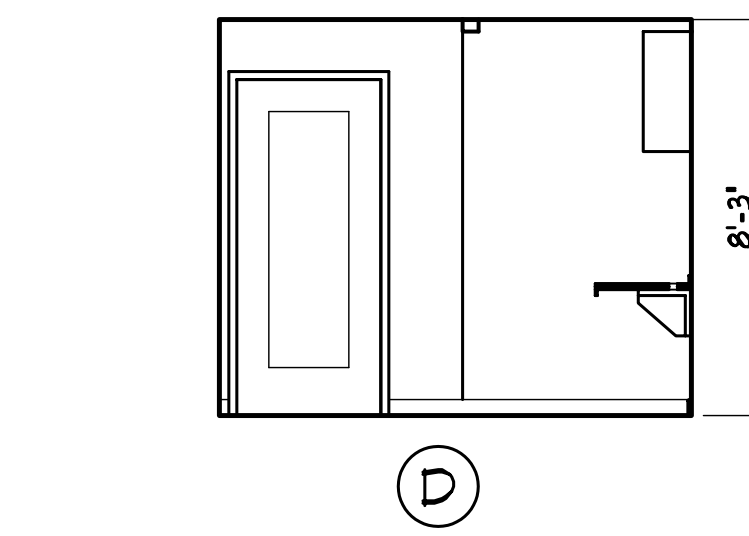
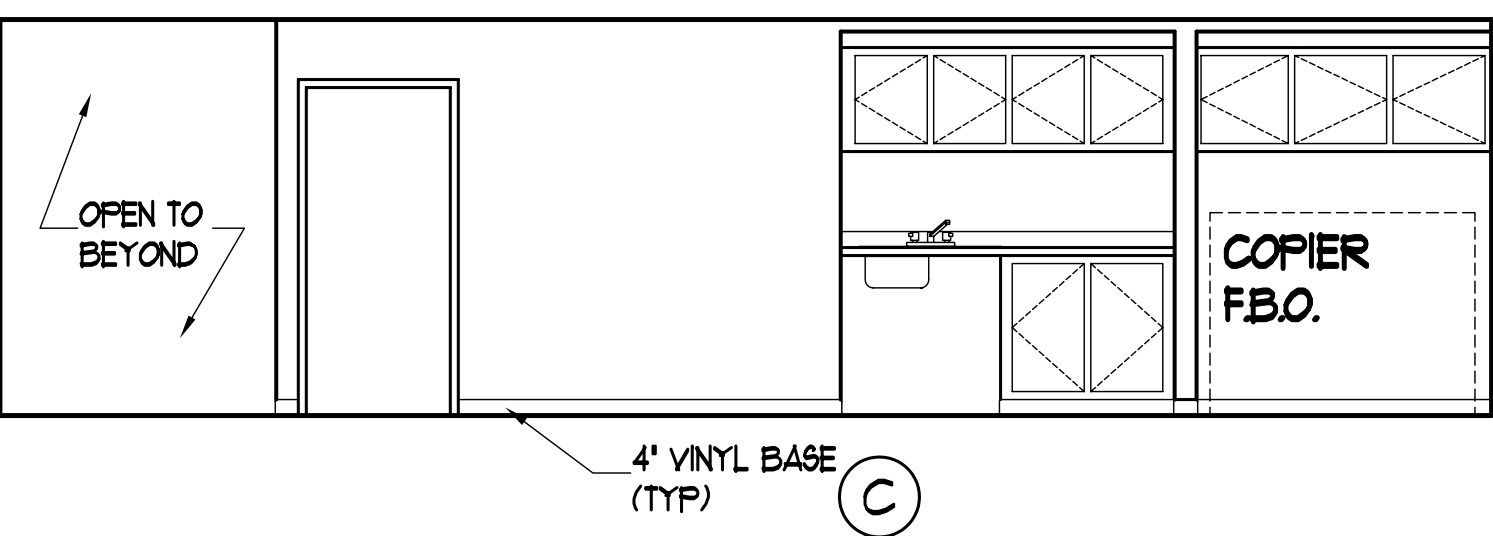
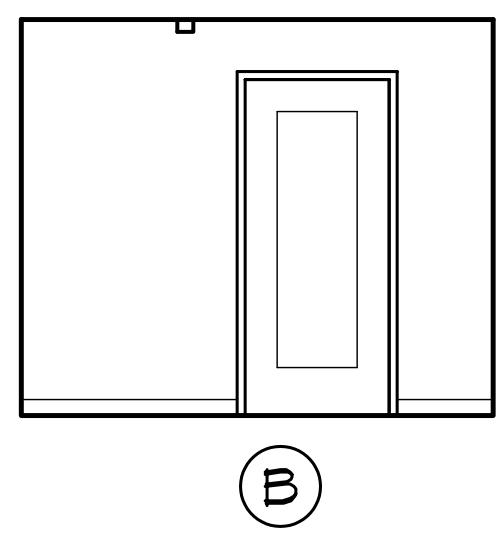
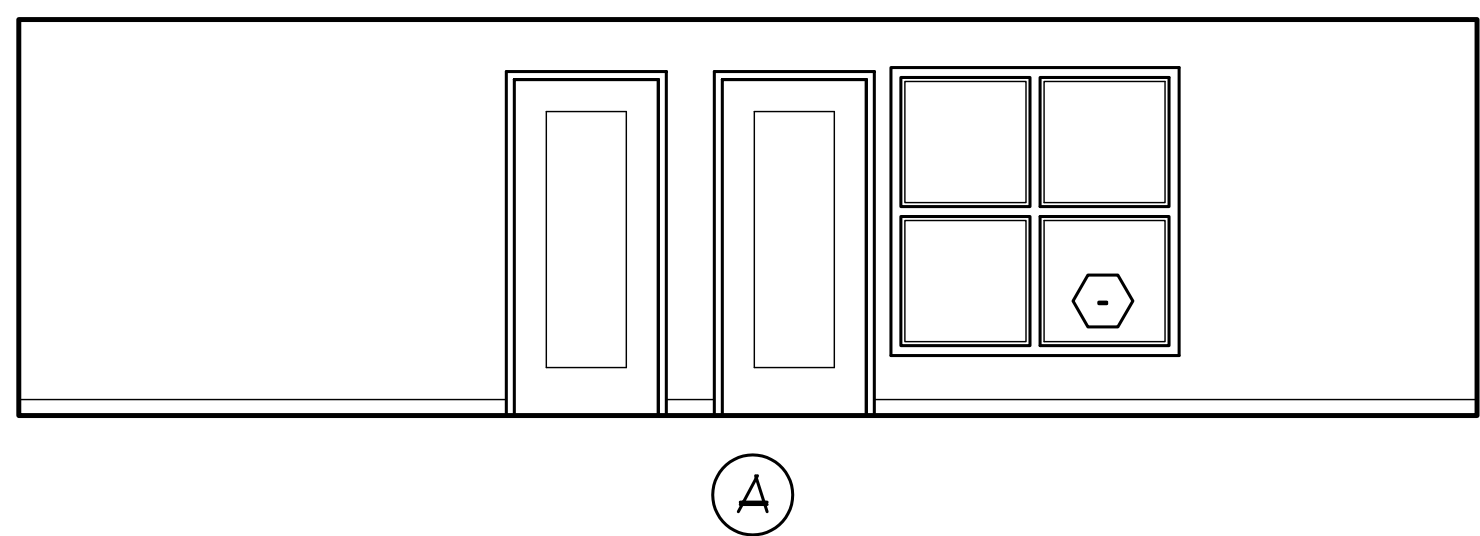


COUNTER PROVE
(3) 2" GROMMETS

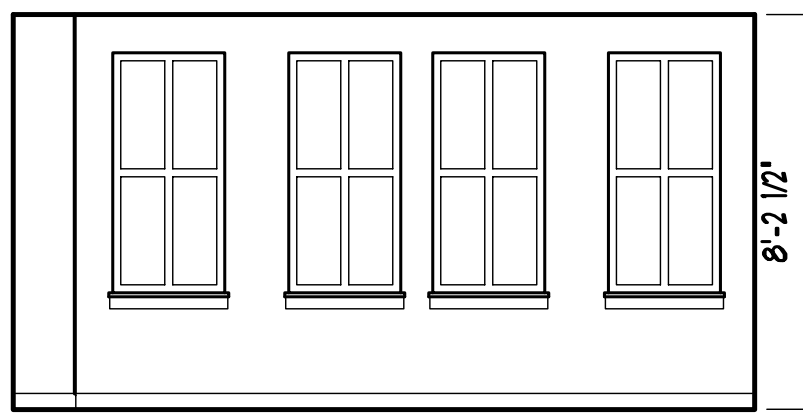
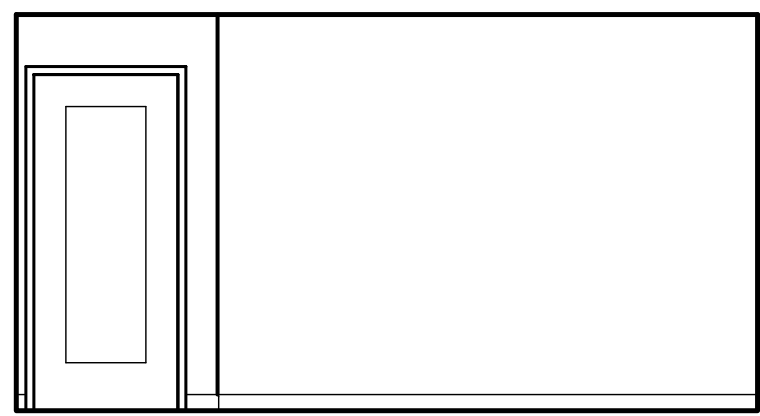
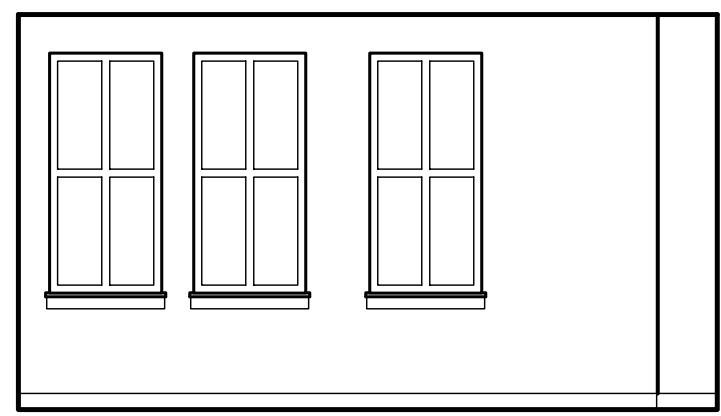
COUNTER PROVE
(3) 2" GROMMETS



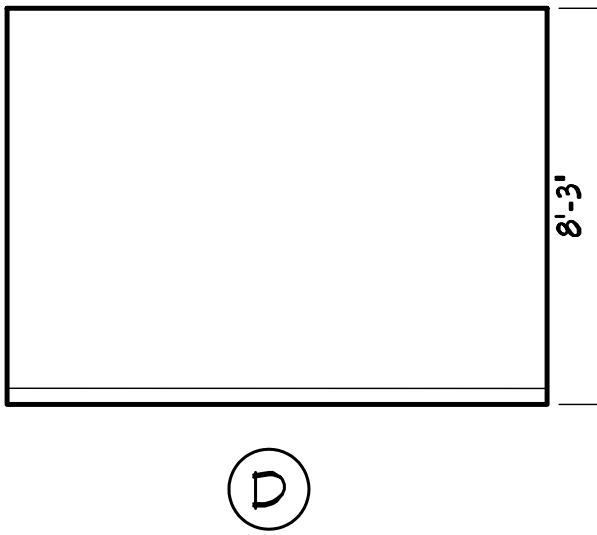
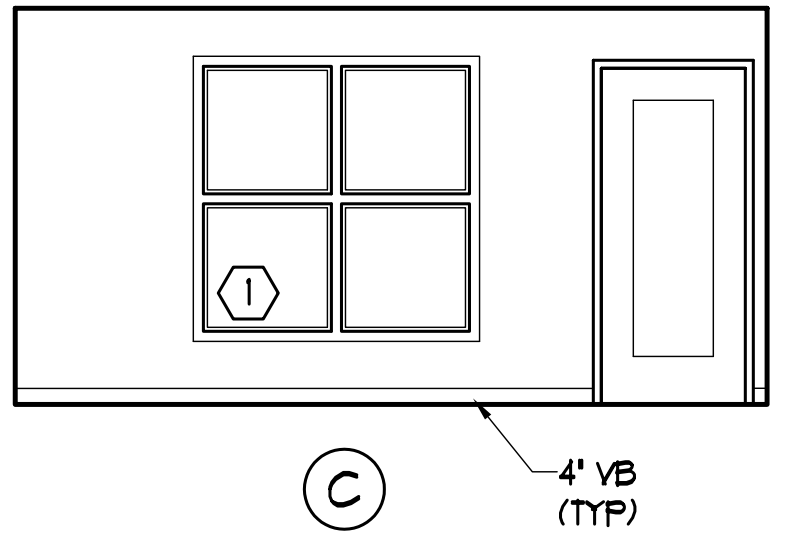
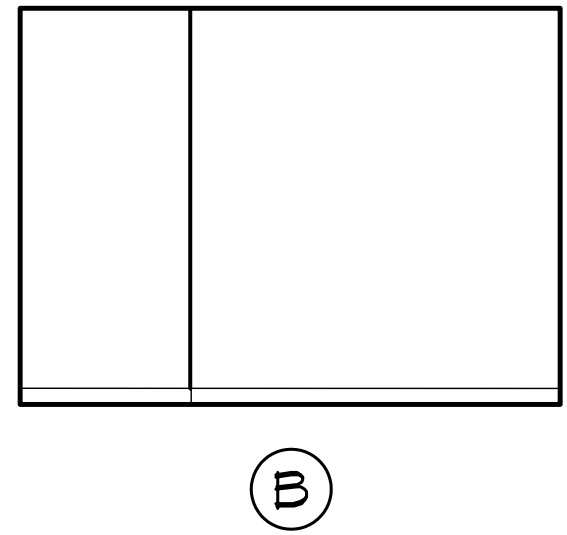
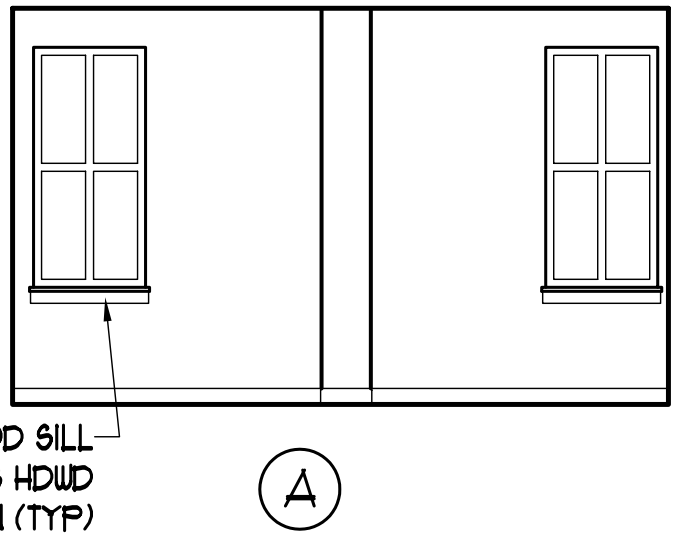
3 RECEPTION & WAITING
SCALE: 1/4" = 1'-0"



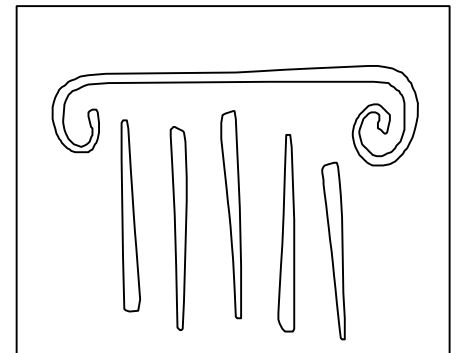
4 OFFICE HALLWAY
SCALE: 1/4" = 1'-0"



1 DEAN'S OFFICE
SCALE: 1/4" = 1'-0"



2 DEAN'S CONFERENCE
SCALE: 1/4" = 1'-0"



PORT CITY ARCHITECTURE

65 NEWBURY STREET
PORTLAND, ME 04101
207.761.9000
fax: 207.761.2010
lita@portcityarch.com

JACOBS CONSULTANCY
GPR Laboratory Planning Practice

VANZELM
H O T H E E R
VANZELM HEYWOOD & SHADFORD, INC.

BECKER
Structural Engineers, Inc.

SYTDesign
CONSULTANTS
CIVIL, ENGINEERING & LANDSCAPE ARCHITECTURE

ALLIED/COOK
CONSTRUCTION

Favreau
ARCHITECT

Titan Mechanical
MECHANICAL CONTRACTORS

UNIVERSITY OF NEW ENGLAND

COLLEGE OF PHARMACY

716 STEVENS AVENUE, PORTLAND, ME

| DATE | DESCRIPTION |
|----------------|-------------|
| | PERMIT SET |
| Date Issued | 01/24/08 |
| Project Number | 06506 |
| GODDARD | |
| SHEET NAME | |

INTERIOR ELEVATIONS

Drawn By
EAC / ANM
Checked By
LAS

A6.3

PERMIT SET - NOT FOR CONSTRUCTION

COPYRIGHT: Reuse or reproduction of the contents of this document is not permitted without written permission of PORT CITY ARCHITECTURE PA