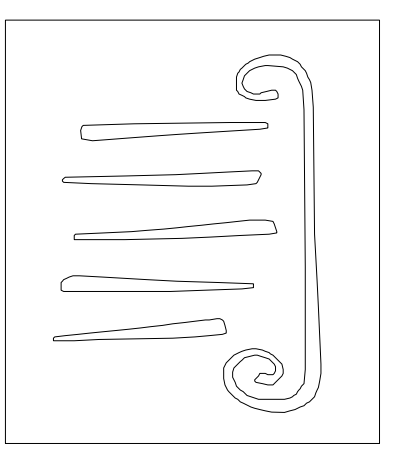


1 LOWER LEVEL FLOOR PLAN

SCALE: 1/4" = 1'-0"



65 NEWBURY STREET
 PORTLAND, ME 04101
 207.761.5000
 info@portcityarch.com
 WWW.PORTCITYARCH.COM



UNIVERSITY OF
 NEW ENGLAND

Allied Engineering
 Structural, Mechanical, Electrical, and Construction



**HP SUBMISSION
 NOT FOR
 CONSTRUCTION**

No.	Description	Date

**PRELIMINARY
 NOT FOR CONSTRUCTION**

UNIVERSITY OF
 NEW ENGLAND
 PORTLAND, MAINE

ALUMNI HALL
 RENOVATION

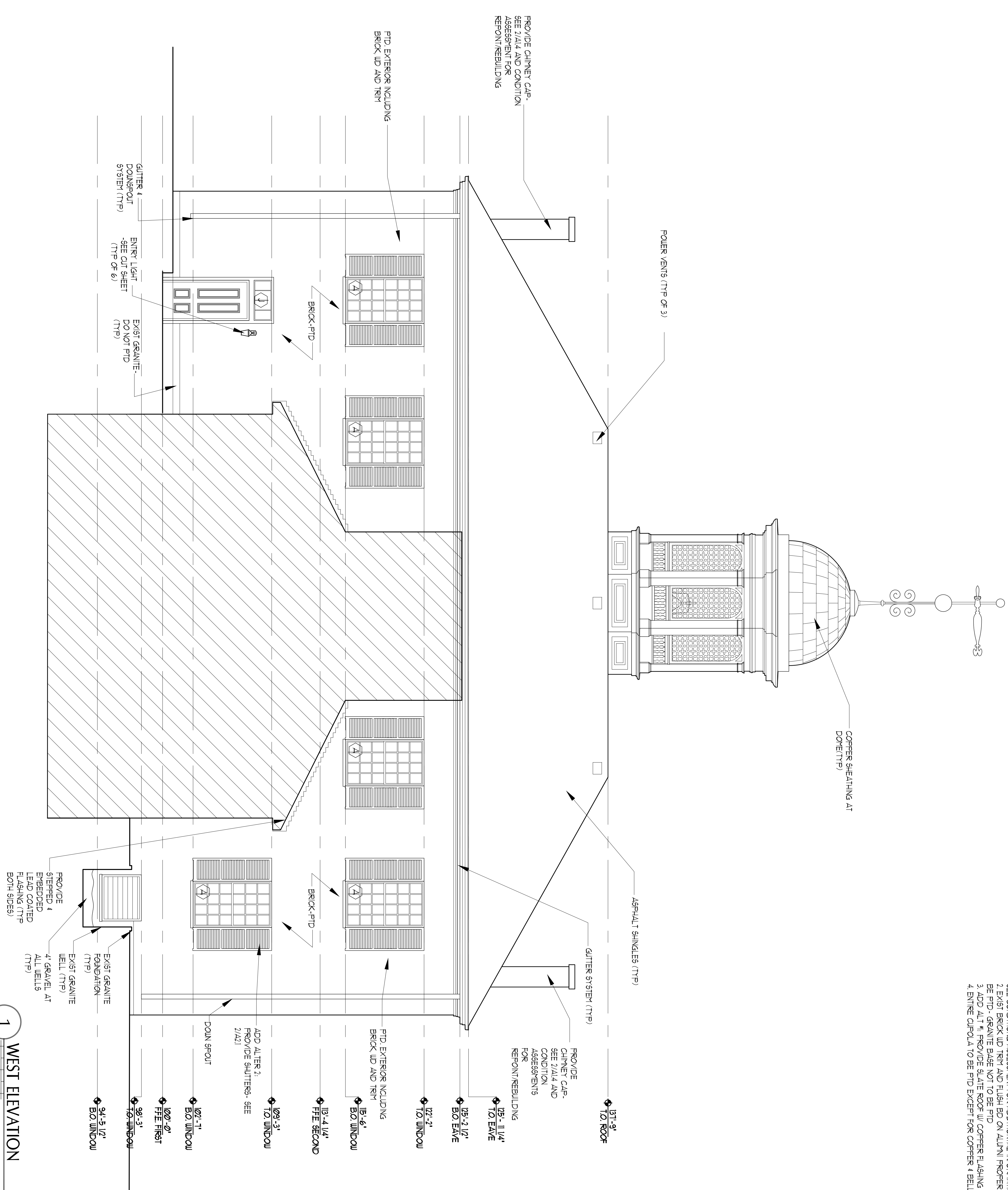
LOWER
 FLOOR PLAN

A1.1

Scale AS NOTED

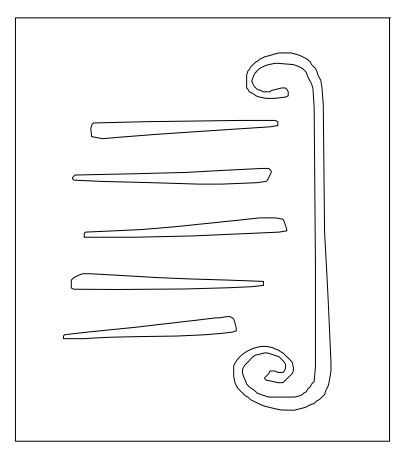
Project Number 44925
 Date March 4, 2015
 Drawn by JP TS SM AR
 Checked by LAS

- EXTERIOR NOTES:
1. EXTERIOR TO BE REPOINTED & REPAIRED. SEE CONDITIONING ASSESSMENT FOR ADDITIONAL INFORMATION
 2. EXIST BRICK WIP TRIM AND FLASHING ON ALUMNI PROPER TO BE PTD - GRANITE BASE NOT TO BE PTD
 3. ADD ALT 1: PROVIDE SLATE ROOF W/ COPPER FLASHING
 4. ENTIRE CUPOLA TO BE PTD EXCEPT FOR COPPER & BELL



1 WEST ELEVATION

SCALE: 1/4" = 1'-0"



65 NEWBURY STREET
 PORTLAND, ME 04101
 207.761.9000
 info@portcityarch.com
 WWW.PORTCITYARCH.COM

UNE
 UNIVERSITY OF
 NEW ENGLAND

Allied Engineering
 Structural Mechanical Electrical Commissioning

CONSIGLI
 Est. 1995

BECKER
 STRUCTURAL ENGINEERS

**HP SUBMISSION
 NOT FOR
 CONSTRUCTION**

No.	Description	Date

**PRELIMINARY
 NOT FOR CONSTRUCTION**

UNIVERSITY OF
 NEW ENGLAND
 PORTLAND, MAINE

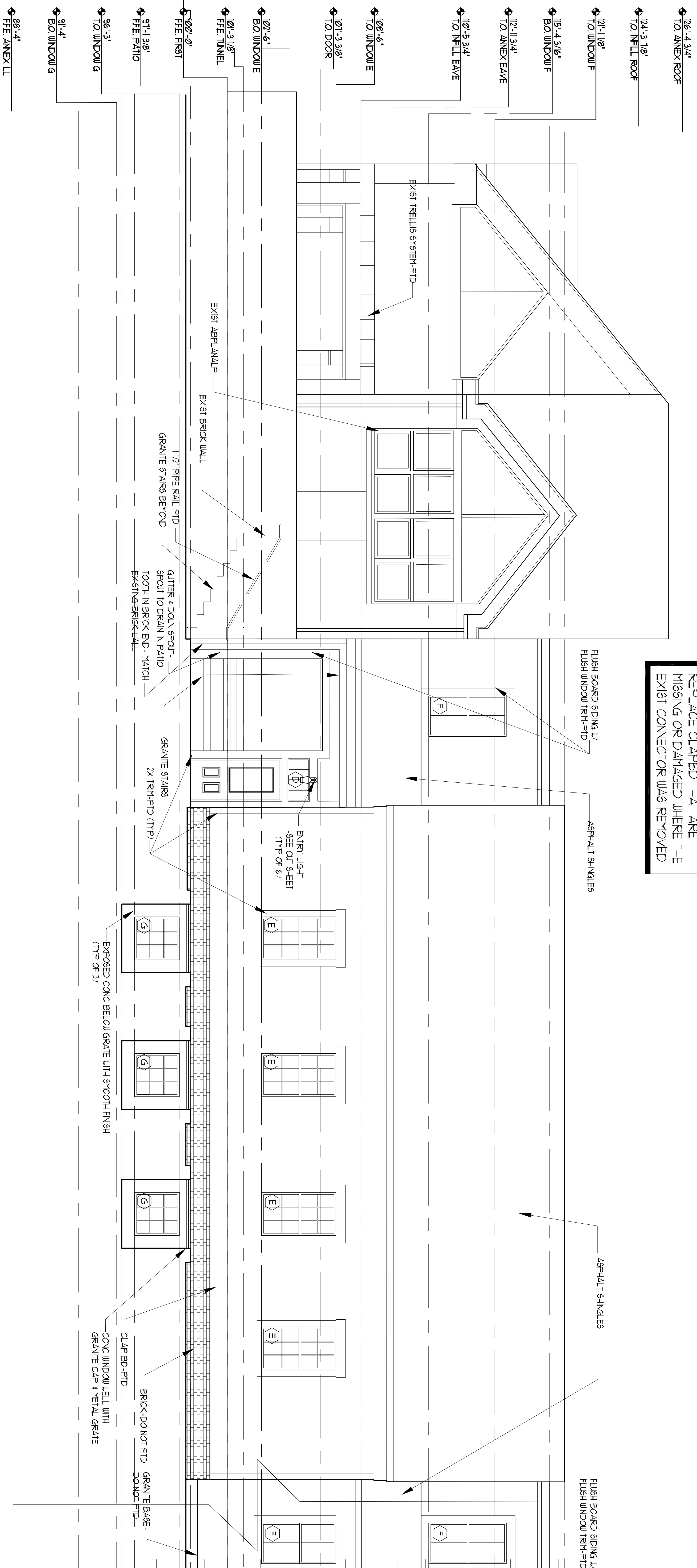
ALUMNI HALL
 RENOVATION
 EXTERIOR
 ELEVATIONS

Project Number: 14535
 Date: March 4, 2015
 Drawn by: JP TS SM AR
 Checked by: LAS

A2.2
 Scale AS NOTED

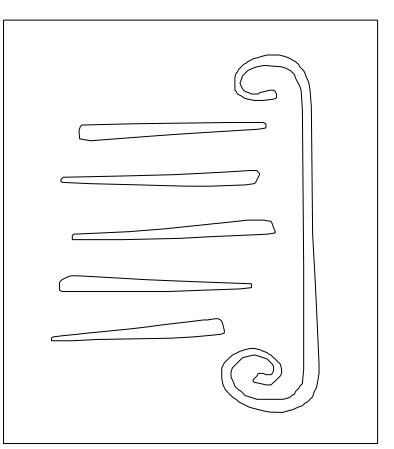
- EXTERIOR NOTES:
1. EXTERIOR TO BE REPOINTED & REPOURED.
 2. SEE CONDITIONS ASSASSMENT FOR ADDITIONAL INFORMATION.
 3. EXIST BRICK W/ TRIM AND FLUSH ED ON ALUMNI PROPER TO BE PTD. GRANITE BASE NOT TO BE PTD.
 4. ADD ALT #1: PROVIDE SLATE ROOF W/ COPPER FLASHING
 5. ENTER CUPOLA TO BE PTD EXCEPT FOR COPPER & BELL.

NOTE:
 REPLACE CLAPBD THAT ARE MISSING OR DAMAGED WHERE THE EXIST CONNECTOR WAS REMOVED



1 EAST ELEVATION

SCALE: 1/4" = 1'-0"



65 NEWBURY STREET
 PORTLAND, ME 04101
 207.761.9000
 info@portcityarch.com
 WWW.PORTCITYARCH.COM



**HP SUBMISSION
 NOT FOR
 CONSTRUCTION**

No.	Description	Date

**PRELIMINARY
 NOT FOR CONSTRUCTION**

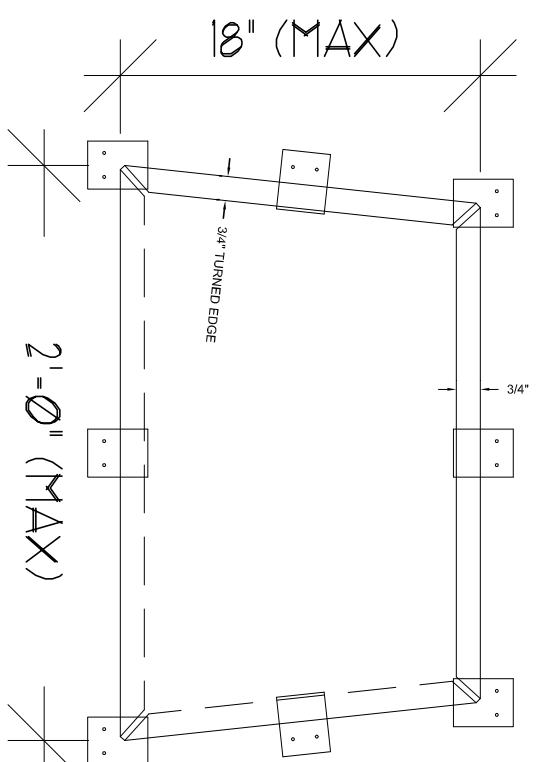
**UNIVERSITY OF
 NEW ENGLAND**
 PORTLAND, MAINE

**ALUMNI HALL
 RENOVATION
 EXTERIOR
 ELEVATIONS**

Project Number: 149235
 Date: March 4, 2015
 Drawn by: JP TS SM AR
 Checked by: LAS

A2.5
 Scale AS NOTED

1 OF 6 EQUAL
LATITUDINAL COURSES
1'-4" (ESTIMATED
COURSE HEIGHT)



1'-11" (ESTIMATED WIDTH AT
BOTTOM COURSE)
2'-0" (MAX)
1 OF 18 EQUAL
LONGITUDINAL COURSES

20 OZ. COLD ROLLED COPPER WITH NOTCHED
CORNERS AND NOT MORE THAN 18" BY 24"
BEFORE FORMING LOCKS.

DO NOT SOLDER BOTTOM THREE COURSES OF DOME. INSTALL
COPPER COMPATIBLE SEALANT AT JOINTS AS REQUIRED.
PRE-TIN BOTH SIDES OF EDGES TO A WIDTH OF 1-1/2".
SOLDER TOP THREE COURSES AS REQUIRED.

ONE 2" WIDE 20 OZ. COLD ROLLED COPPER CLEAT AT EACH
VERTICAL EDGE. SECURE TO WOOD FRAME WITH TWO COPPER
ALLOY FASTENERS AS REQUIRED.

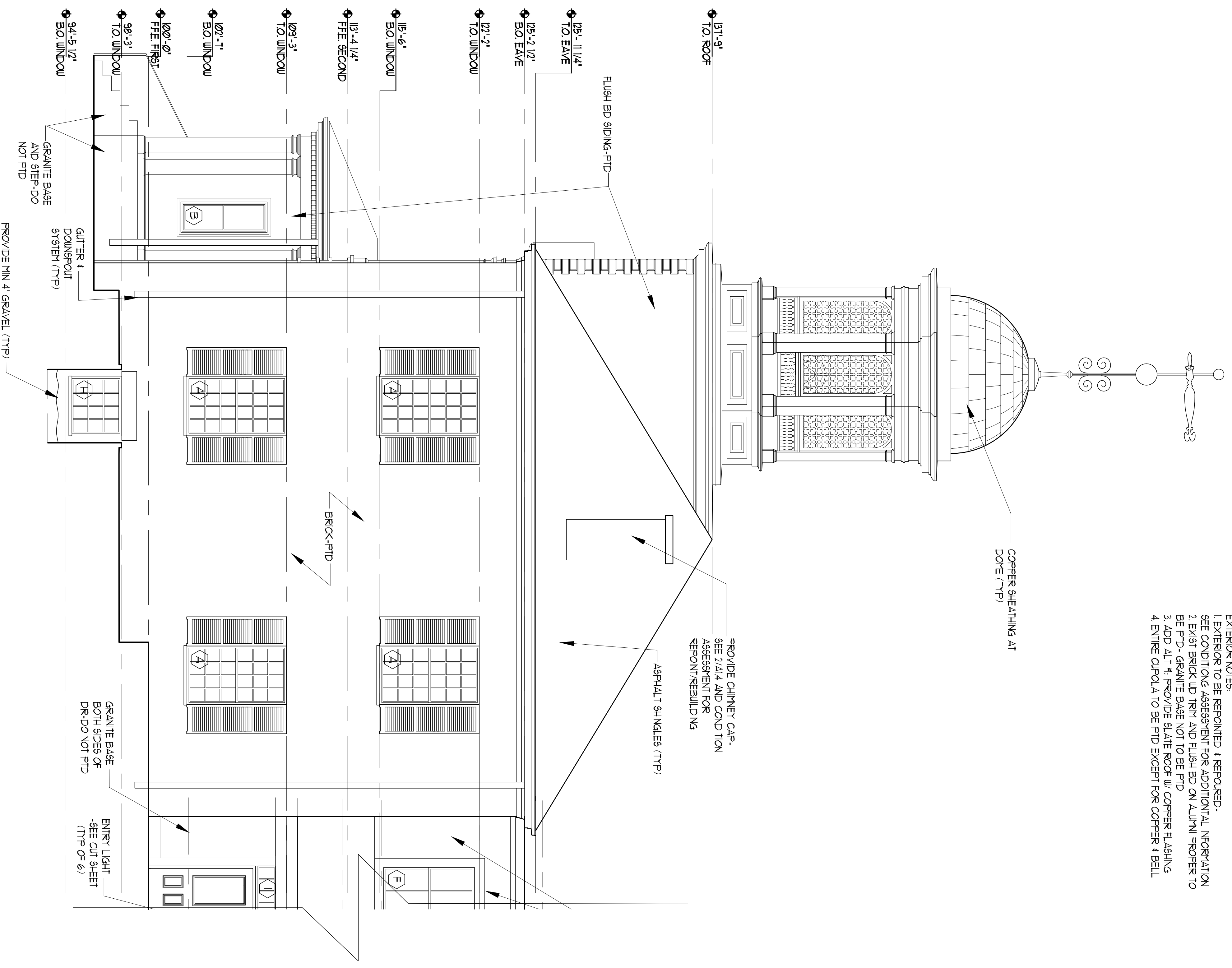
2" WIDE 20 OZ. COLD ROLLED COPPER CLEATS AT EACH
HORIZONTAL EDGE. ON DOME REQUIRED 1'-0" O.C. (MIN)

NOTE: BOTTOM AND TOP COURSE LATITUDINAL EDGES
WILL HAVE UNIQUE DETAILS.

2 CUPOLA DETAILS

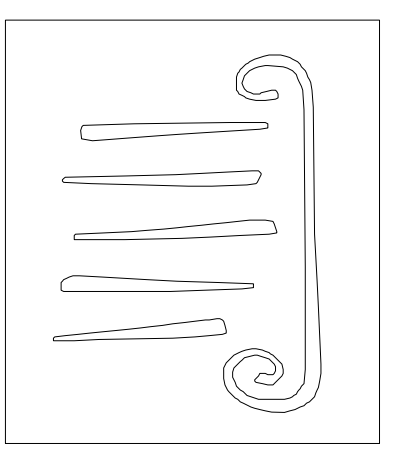
SCALE: 1/2" = 1'-0"

- EXTERIOR NOTES:
1. EXTERIOR TO BE REPOINTED & REPAIRED. SEE CONDITIONING ASSESSMENT FOR ADDITIONAL INFORMATION
 2. EXIST BRICK LUT TRIM AND FLUSH BD ON ALUMNI PROPER TO BE PTD. - GRANITE BASE NOT TO BE PTD
 3. ADD ALT #1. PROVIDE SLATE ROOF W/ COPPER FLASHING
 4. ENTIRE CUPOLA TO BE PTD EXCEPT FOR COPPER & BELL



1 WEST ELEVATION

SCALE: 1/4" = 1'-0"



65 NEWBURY STREET
PORTLAND, ME 04101
207.761.5000
info@portcityarch.com
WWW.PORTCITYARCH.COM

UNE
UNIVERSITY OF
NEW ENGLAND

Allied Engineering
Structural, Mechanical, Electrical, Environmental

CONSIGLI
Est. 1995

BECKER
STRUCTURAL ENGINEERS

**HP SUBMISSION
NOT FOR
CONSTRUCTION**

No.	Description	Date

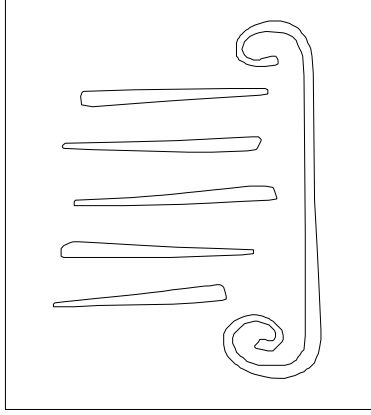
**PRELIMINARY
NOT FOR CONSTRUCTION**

**UNIVERSITY OF
NEW ENGLAND**
PORTLAND, MAINE

**ALUMNI HALL
RENOVATION
EXTERIOR
ELEVATIONS**

Project Number: 44925
Date: March 4, 2015
Drawn by: JP TS SM AR
Checked by: LAS

A2.6
Scale AS NOTED



65 NEWBURY STREET
 PORTLAND, ME 04101
 207.761.5000
 info@portcityarch.com
 WWW.PORTCITYARCH.COM



UNIVERSITY OF
 NEW ENGLAND



**HP SUBMISSION
 NOT FOR
 CONSTRUCTION**

No.	Description	Date

**PRELIMINARY
 NOT FOR CONSTRUCTION**

**UNIVERSITY OF
 NEW ENGLAND**
 PORTLAND, MAINE

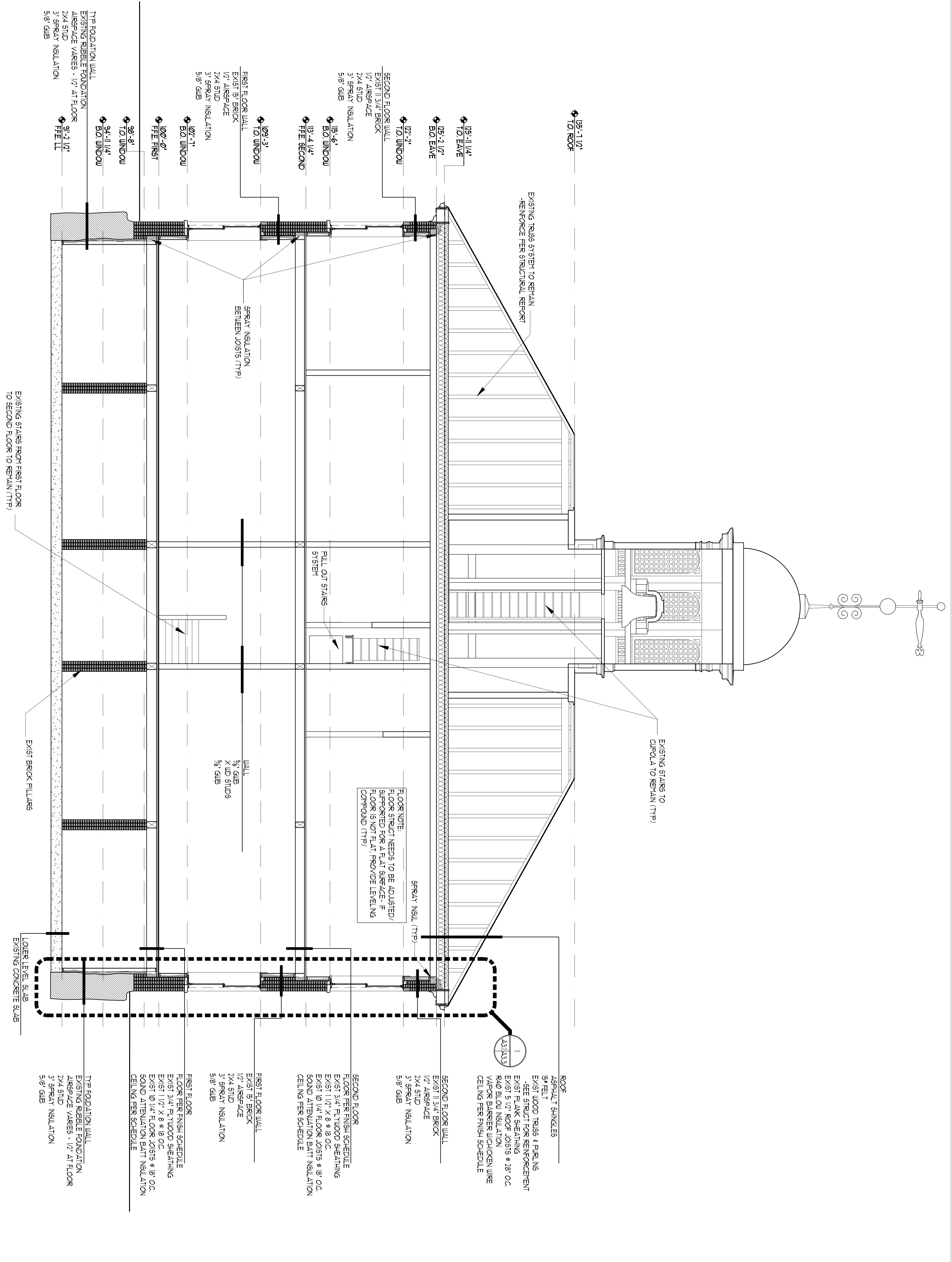
**ALUMNI HALL
 RENOVATION**

SECTION

Project Number: 14925
 Date: March 4, 2015
 Drawn by: JP TS SM AR
 Checked by: LAS

A3.1

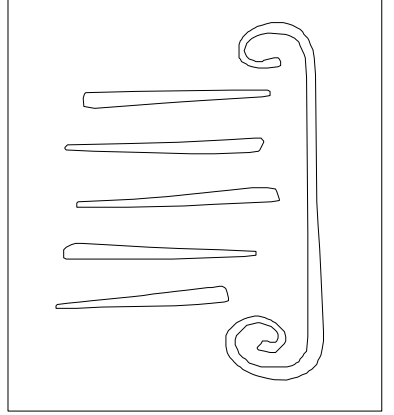
Scale AS NOTED



1 SECTION

4'-0"

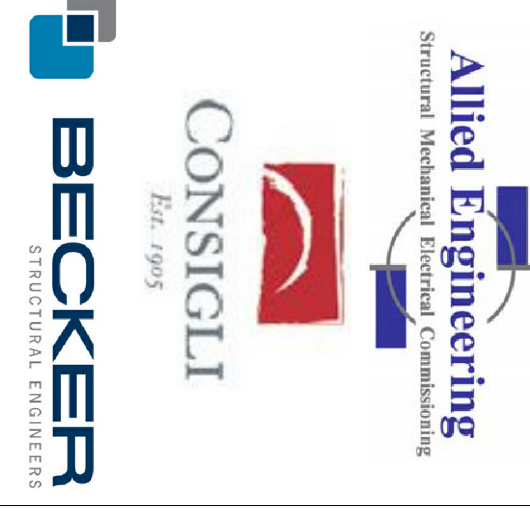
SCALE 1/4" = 1'-0"



65 NEWBURY STREET
 PORTLAND, ME 04101
 207.761.9000
 info@portcityarch.com
 WWW.PORTCITYARCH.COM



UNIVERSITY OF
 NEW ENGLAND



**HP SUBMISSION
 NOT FOR
 CONSTRUCTION**

No.	Description	Date

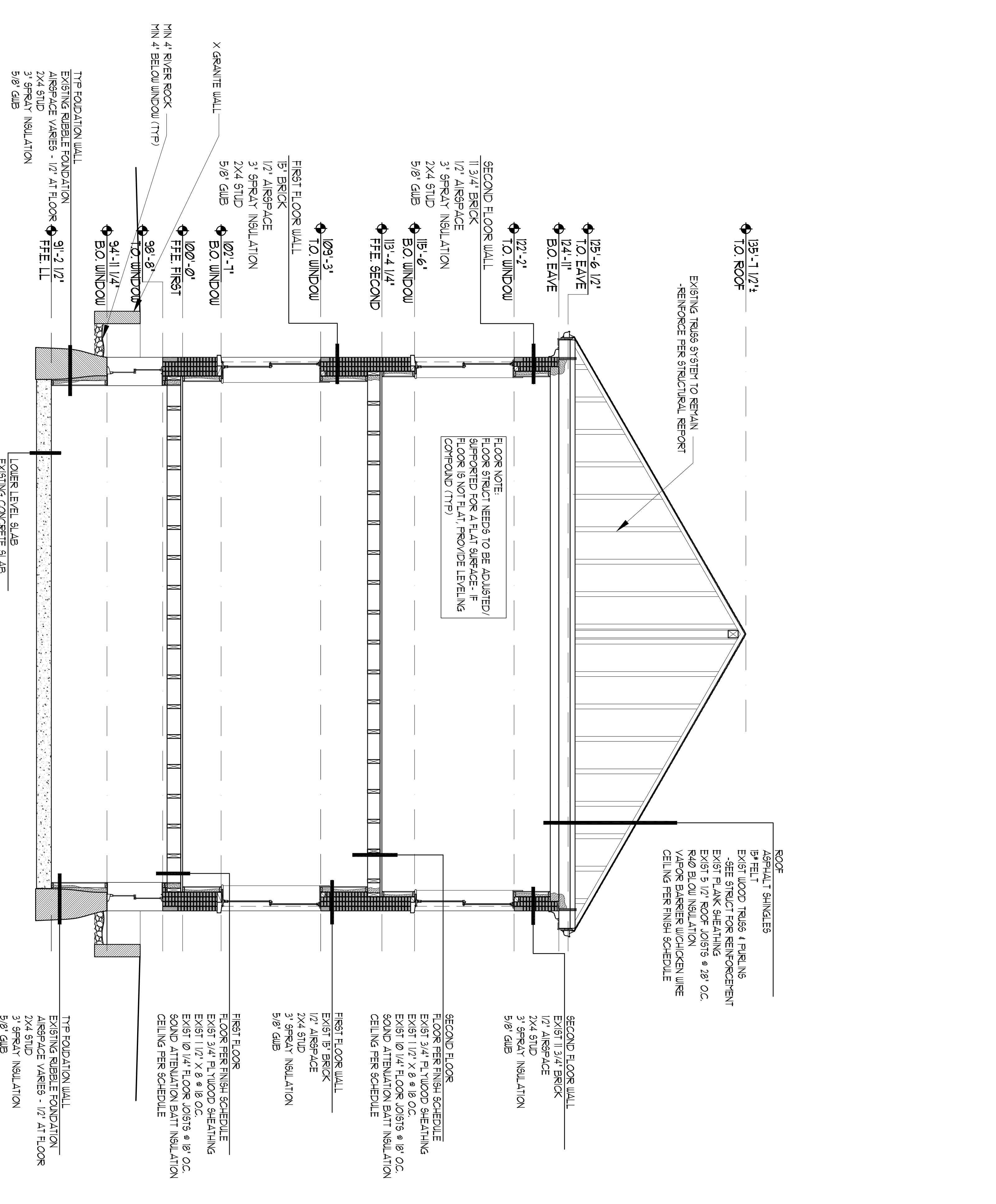
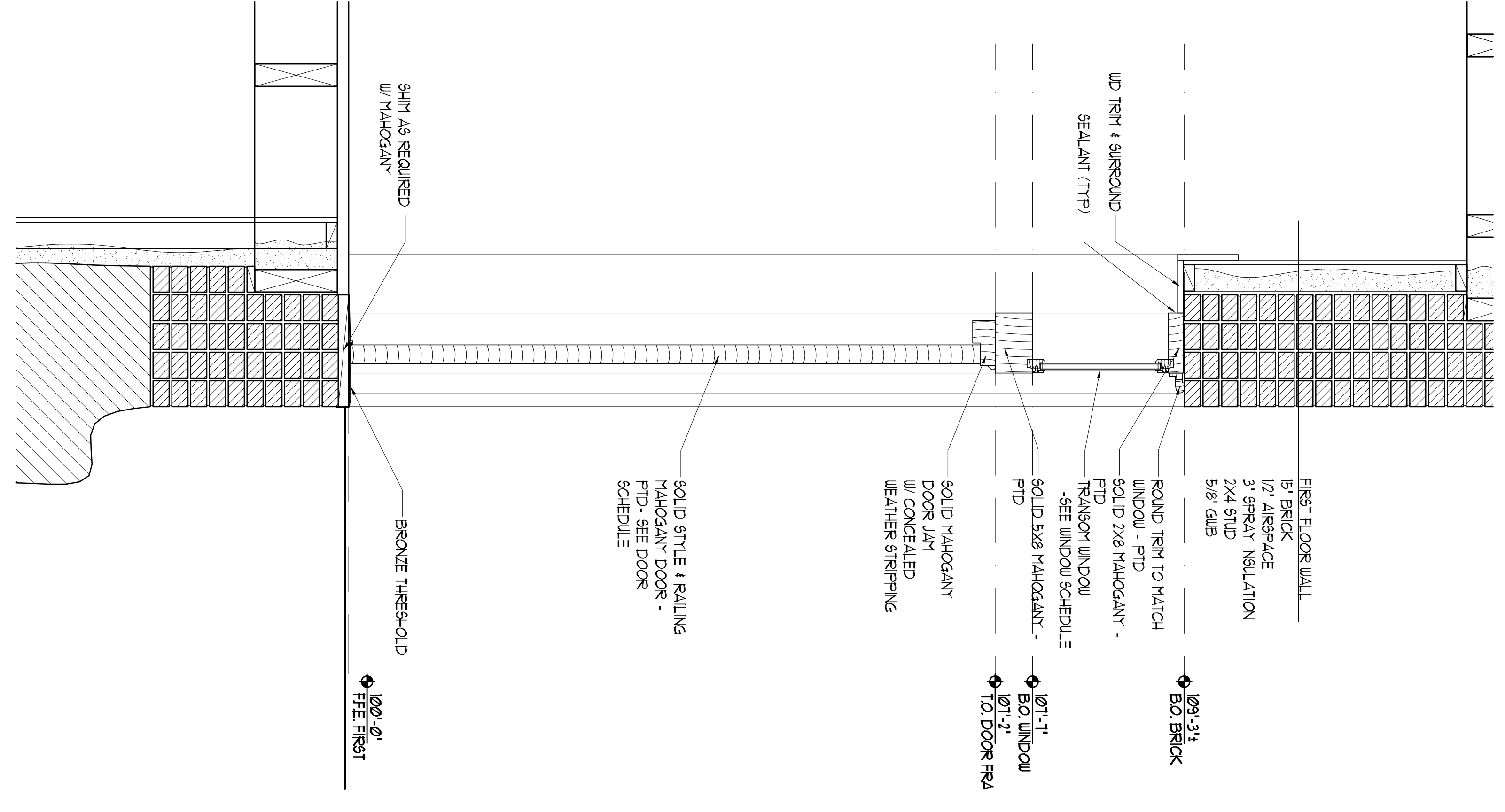
**PRELIMINARY
 NOT FOR CONSTRUCTION**

**UNIVERSITY OF
 NEW ENGLAND**
 PORTLAND, MAINE

**ALUMNI HALL
 RENOVATION**

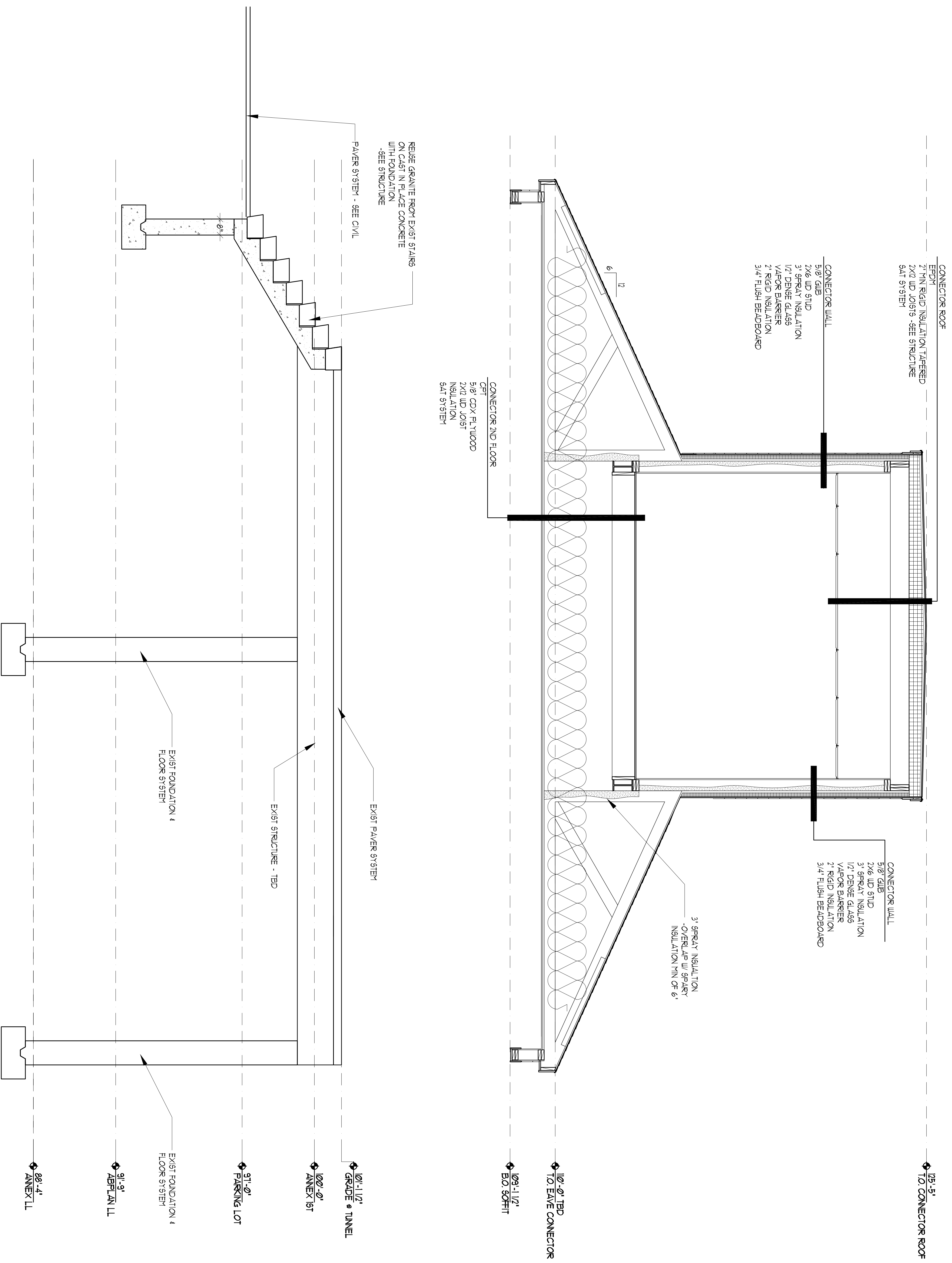
SECTION

Project Number: 14935
 Date: March 4, 2015
 Drawn by: JP TS SM AR
 Checked by: LAS
A3.2
 Scale AS NOTED



2 EXTERIOR DOOR DETAIL
 SCALE: 1" = 1'-0"

1 SECTION
 SCALE: 1/8" = 1'-0"



1 ANNEX SECTION

SCALE: 1/2" = 1'-0"

No.	Description	Date

**PRELIMINARY
NOT FOR CONSTRUCTION**

**UNIVERSITY OF
NEW ENGLAND**
PORTLAND, MAINE

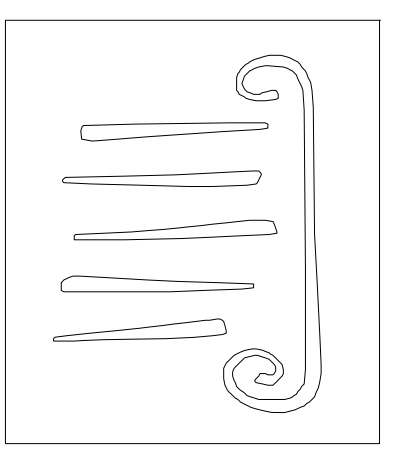
**ALUMNI HALL
RENOVATION**

SECTION

Project Number: 44925
 Date: March 4, 2015
 Drawn by: JP TS SM AR
 Checked by: LAS

A3.6

Scale AS NOTED



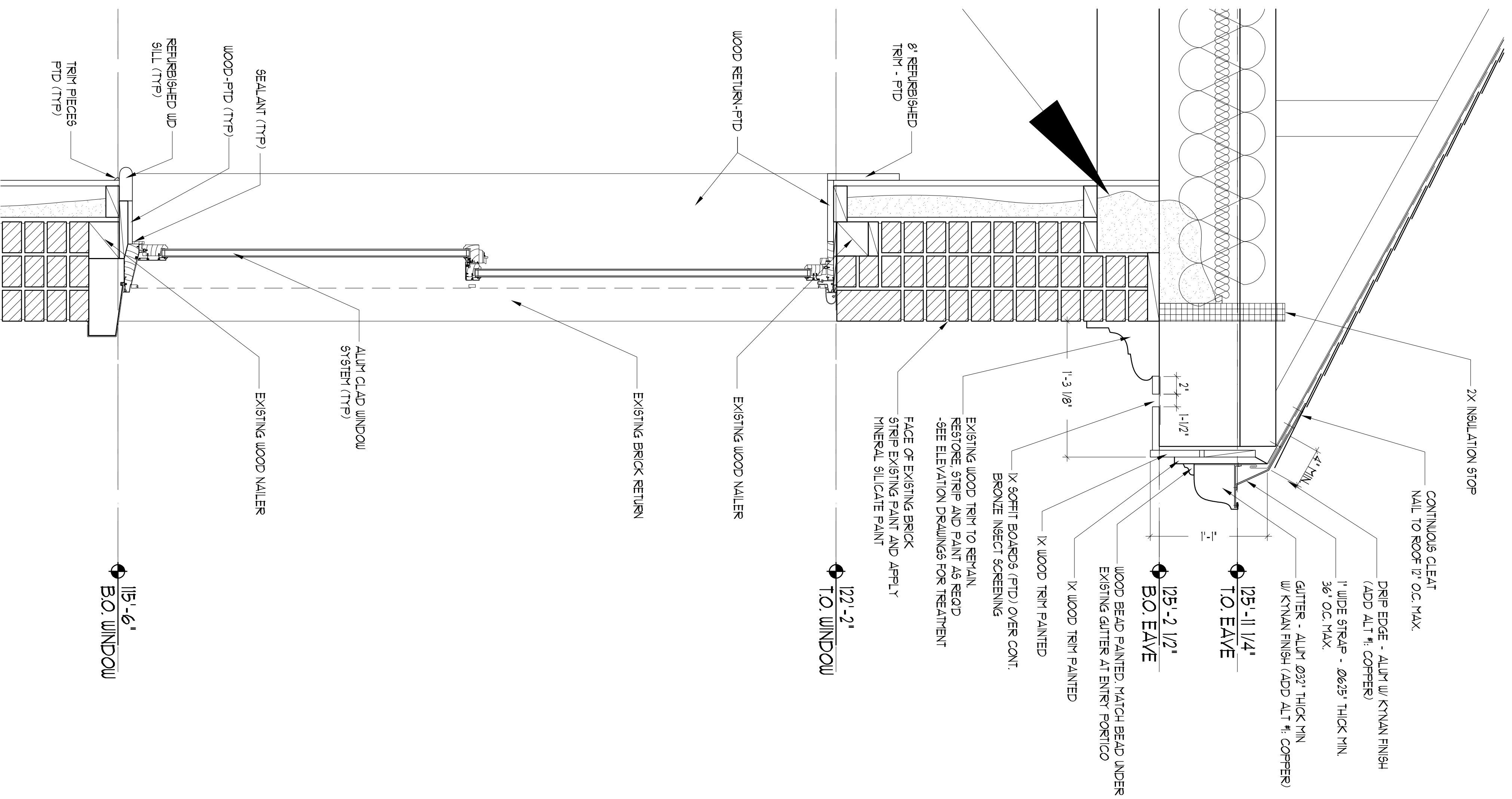
65 NEWBURY STREET
 PORTLAND, ME 04101
 207.761.5000
 info@portcityarch.com
 WWW.PORTCITYARCH.COM



**UNIVERSITY OF
NEW ENGLAND**



**HP SUBMISSION
NOT FOR
CONSTRUCTION**

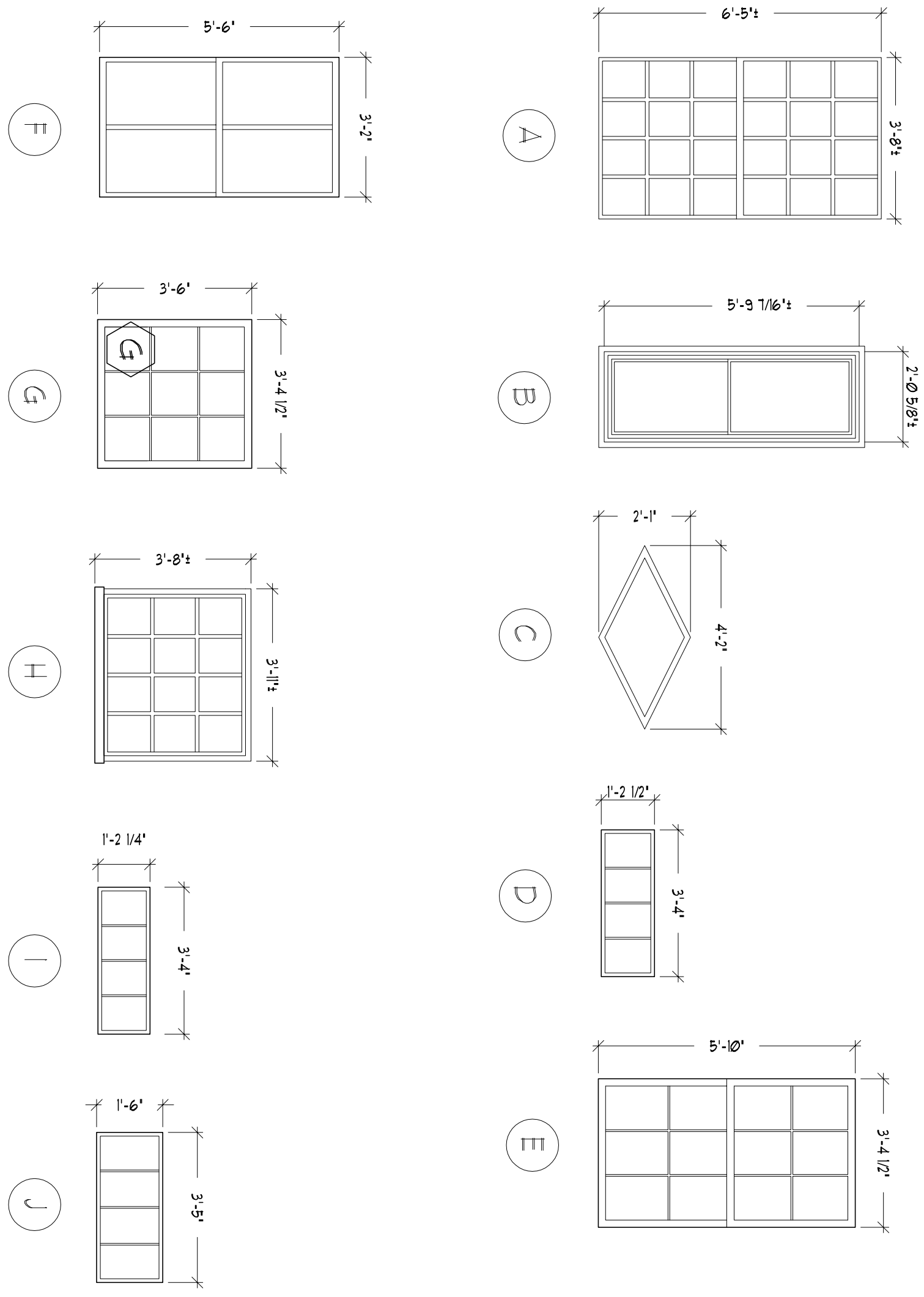


NOTES:

- 1. REFINISH X WINDOWS
- 2. X WINDOW TO REMAIN

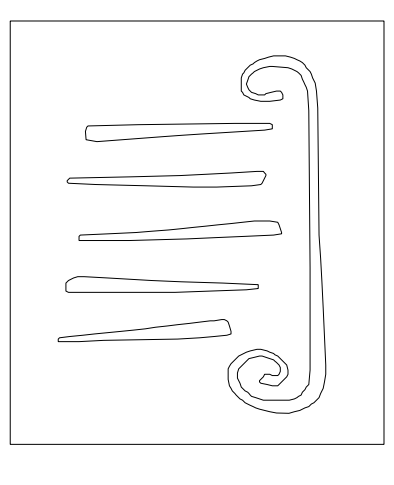
WINDOW SCHEDULE

TYPE	WINDOW	SIZE (WxH)	MATERIAL	OPERATION	DETAILS	JAMB	SILL	NOTES
A		3'-8" X 6'-5"	ALUM	DOUBLE				
B		2'-5/8" X 5'-7/9/16"	X	FIX				1
C		3'-4" X 1'-2-1/2"	X	FIX				2
D		2'-11-7/8" X 1'-2-1/2"	WD	FIX				
E		3'-4-1/2" X 5'-10"	ALUM	DOUBLE				
F		3'-2-1/16" X 6'-15/16"	ALUM	DOUBLE				
G		3'-4-1/2" X 3'-6"	ALUM	FIX				
H		3'-11" X 3'-6-5/8"	ALUM	DOUBLE				
I		3'-4" X 1'-2-1/8"	WD	FIX				
J		3'-4-7/8" X 1'-6"	WD	FIX				



1 WINDOW & EAVE DETAIL

SCALE: 1" = 1'-0"



65 NEWBURY STREET
 PORTLAND, ME 04101
 207.761.9000
 info@portneweng.com
 WWW.PORTNEWENG.COM



UNIVERSITY OF
 NEW ENGLAND

Allied Engineering
 Structural Mechanical Electrical Commissioning



CONSIGLI
 Est. 1995
 STRUCTURAL ENGINEERS



**HP SUBMISSION
 NOT FOR
 CONSTRUCTION**

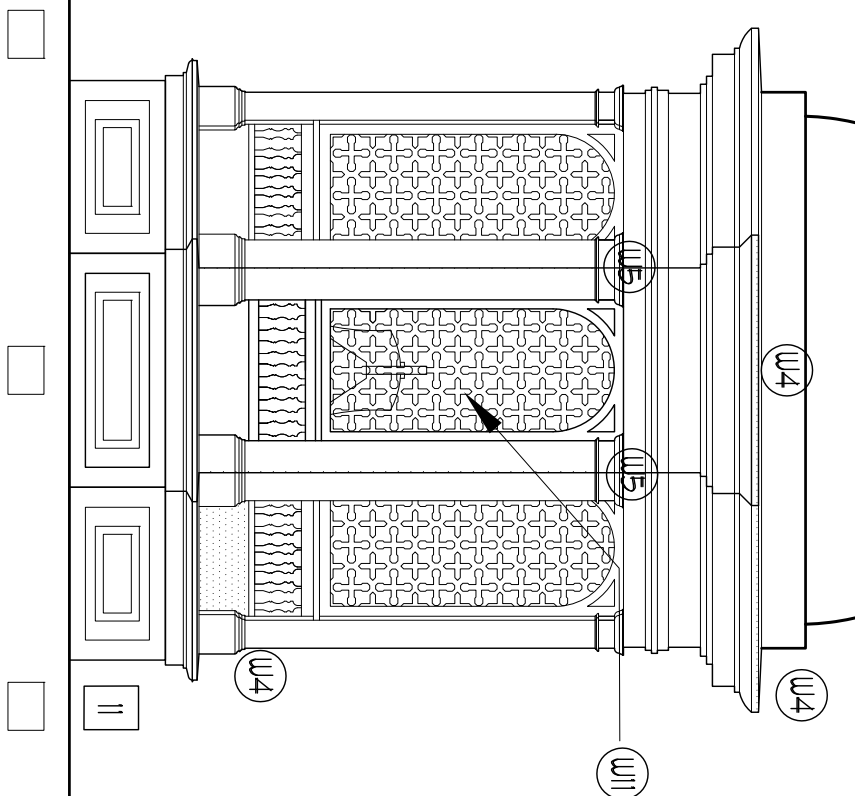
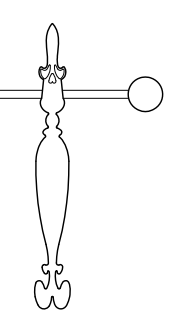
No.	REVISIONS	Date
	Description	

**PRELIMINARY
 NOT FOR CONSTRUCTION**

UNIVERSITY OF
 NEW ENGLAND
 PORTLAND, MAINE
 ALUMNI HALL
 RENOVATION
 WINDOW
 SCHEDULE

Project Number: 146315
 Date: March 4, 2015
 Drawn By: JP TS SM AR
 Checked by: LAS

A5.2
 Scale AS NOTED



GENERAL CONDITION ASSESSMENT NOTES

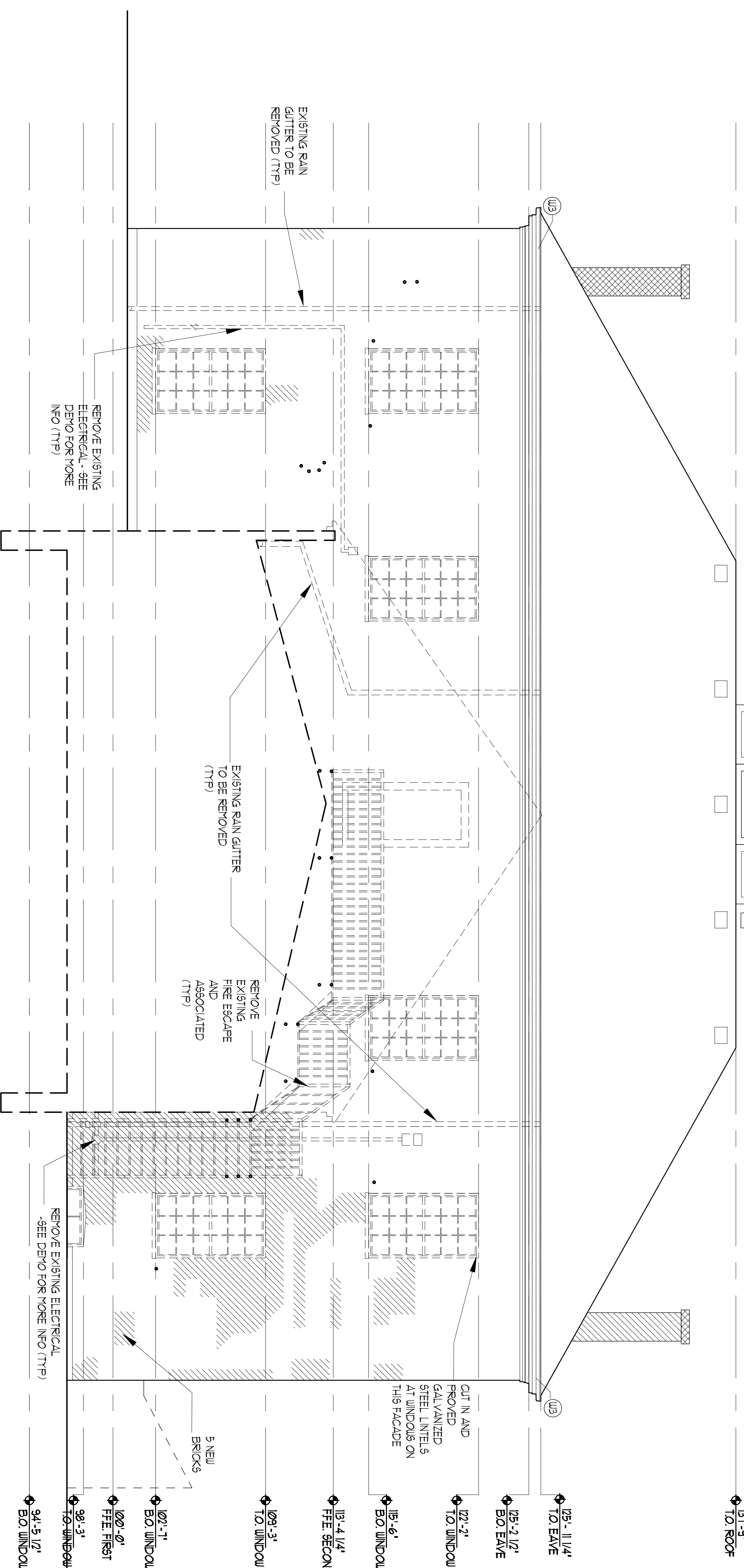
1. STRIP FLOOR BRICKS FOR REPOINTING (TYP ALL SIDES)
2. CONTRACTOR TO VERIFY & REMOVE BY GRINDING OUT ANY HTL ELEMENTS EMBEDDED IN BRICK USED ON ITEMS THAT ARE BEING REMOVED & REPOINTED AS RECD
3. CHEMICALLY STRIP ALL WOOD COMPONENTS SCHEDULED TO BE REMOVED, NEW FIBRE AND PAINT
4. REMOVE ALL EXISTING BRICKWORK SURFACES, BRICKWORK, BLACK PINE, AND END PINE FINISH PAINT EXPOSED SURFACES
5. REMOVE ALL EXISTING CALLIC OPEN JOINTS UP TO 1/2" WIDE SHALL BE RESCALED, JOINTS LARGER THAN 1/2" WIDE TO RECEIVE EPOXY SECTION REPAIR

RESTORATION KEY

- ////// NOTLAR SORT OR MISSING
- /// CUT BLOCK 1/2" (31) LPTS 1/2 EACH (35)
- 1/8" DEEP REPOINT W/ FINL 1/2" (31) LPTS
- ABANDONED VERTICAL ELEMENTS TO BE GROUND OUT - REPOINTED AS RECD
- REMOVE DOOR SPOUT SUPPORT AND REPOINT
- ▨ REMOVE & REBUILD BRICK
- ▩ WOOD TREATMENT SEE WOOD TREATMENT KEY
- PHOTO REFERENCE - SEE SPEC

WOOD TREATMENT NOTES

- ① REMOVE MISSING OR NON-REPAIRABLE WOOD TRIM
- ② REPLACE WITH NEW TRIM TO MATCH EXISTING PROFILE
- ③ REMOVE EXISTING WOOD GUTTER AND REPLACE WITH NEW VERTICAL GUTTER 6" STEEL MATCH EXISTING PROFILE
- ④ REMOVE EXISTING VERTICAL GUTTER BLOCKER TRIM AND SCOFF AS SHOWN IN DETAIL
- ⑤ REPLACE WITH NEW VERTICAL GUTTER AND WOOD TRIM TO MATCH EXISTING PROFILE
- ⑥ EPOXY INJECTION REPAIR
- ⑦ EPoxy SECTION REPAIR
- ⑧ NEW MASONRY THRESHOLD TO MATCH EXISTING PRETREAT ALL SIDES
- ⑨ PAINT BLACK PRIME END PINE AND PAINT
- ⑩ REMOVE EXISTING DOOR AND HARDWARE STEEL STRIP PAINT PREP FOR NEW PAINT AND HARDWARE
- ⑪ CLEAN AND REINSTALL VERTICAL DEADBOLTS TO BECOME NON-OPERABLE
- ⑫ REMOVE EXISTING WINDOW SASH STEEL STRIP REFINISH AND REINSTALL AS PER SPEC SECTION XXXXX
- ⑬ REMOVE EXISTING LIGHT FIXTURE PREP FOR NEW FIXTURE INSTALL NEW WOOD KEYSONE TO MATCH PRETREAT ALL SIDES OF NEW KEYSONE INCLUDING GROUPEL HOLE FOR NEW FIXTURE
- ⑭ REBUILD 2 CLOVERS CLOVERS
- ⑮ REBUILD 1 CLOVER CLOVERS
- ⑯ REMOVE EA PANEL 1 OF 8 HAND SCRAPER - LIGHT SANDBLAST SECURE EA CLOVER & CENTER W/ 5/8 TRIM SCREW
- ⑰ BACK PANEL - OPERABLE - NEEDS 2 NEW 5/8 HINGERS
- ⑱ ADD HAPR TO ROOF MATCH - GOOD CONDITION
- ⑲ REBUILD PANELS
- ⑳ REMOVE AND REPLACE ALL CONS WITH WESTERN RED CEDAR (TYP ALL SIDES)

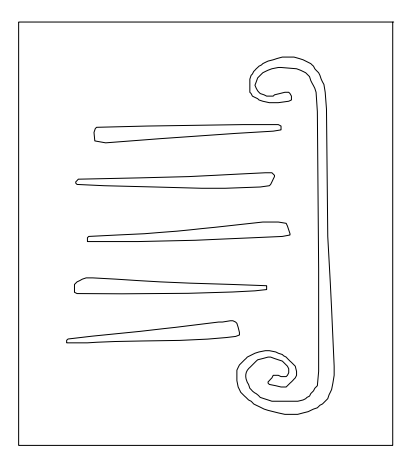


- 131'-9" TO: ROOF
- 125-11 1/4" TO: EAVE
- 125-2 1/2" B.O. EAVE
- 122'-2" TO: WINDOW
- 115'-6" B.O. WINDOW
- 113'-4 1/4" FFE SECOND
- 109'-3" TO: WINDOW
- 102'-1" B.O. WINDOW
- 100'-0" FFE FIRST
- 98'-3" TO: WINDOW
- 94'-5 1/2" B.O. WINDOW

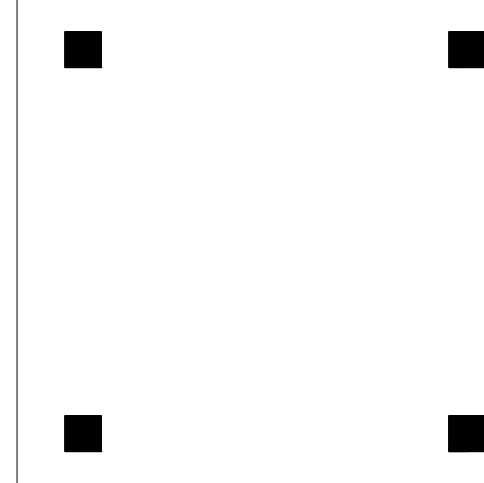
1 EXISTING CONDITION - SOUTH ELEVATION

4'-0"

SCALE: 1/4" = 1'-0"



65 NEWBURY STREET
 PORTLAND, ME 04101
 207.761.9000
 info@portcityarch.com
 WWW.PORTCITYARCH.COM



UNIVERSITY OF NEW ENGLAND

HP SUBMISSION NOT FOR CONSTRUCTION

BECKER STRUCTURAL ENGINEERS

No.	Description	Date

PRELIMINARY NOT FOR CONSTRUCTION

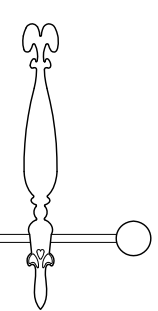
ALUMNI HALL RENOVATION CONDITION ASSESSMENT

UNIVERSITY OF NEW ENGLAND
 PORTLAND, MAINE

Project Number: 14525
 Date: March 6, 2015
 Drawn by: JP TSM/AR
 Checked by: LAS

CA1.2

Scale: AS NOTED



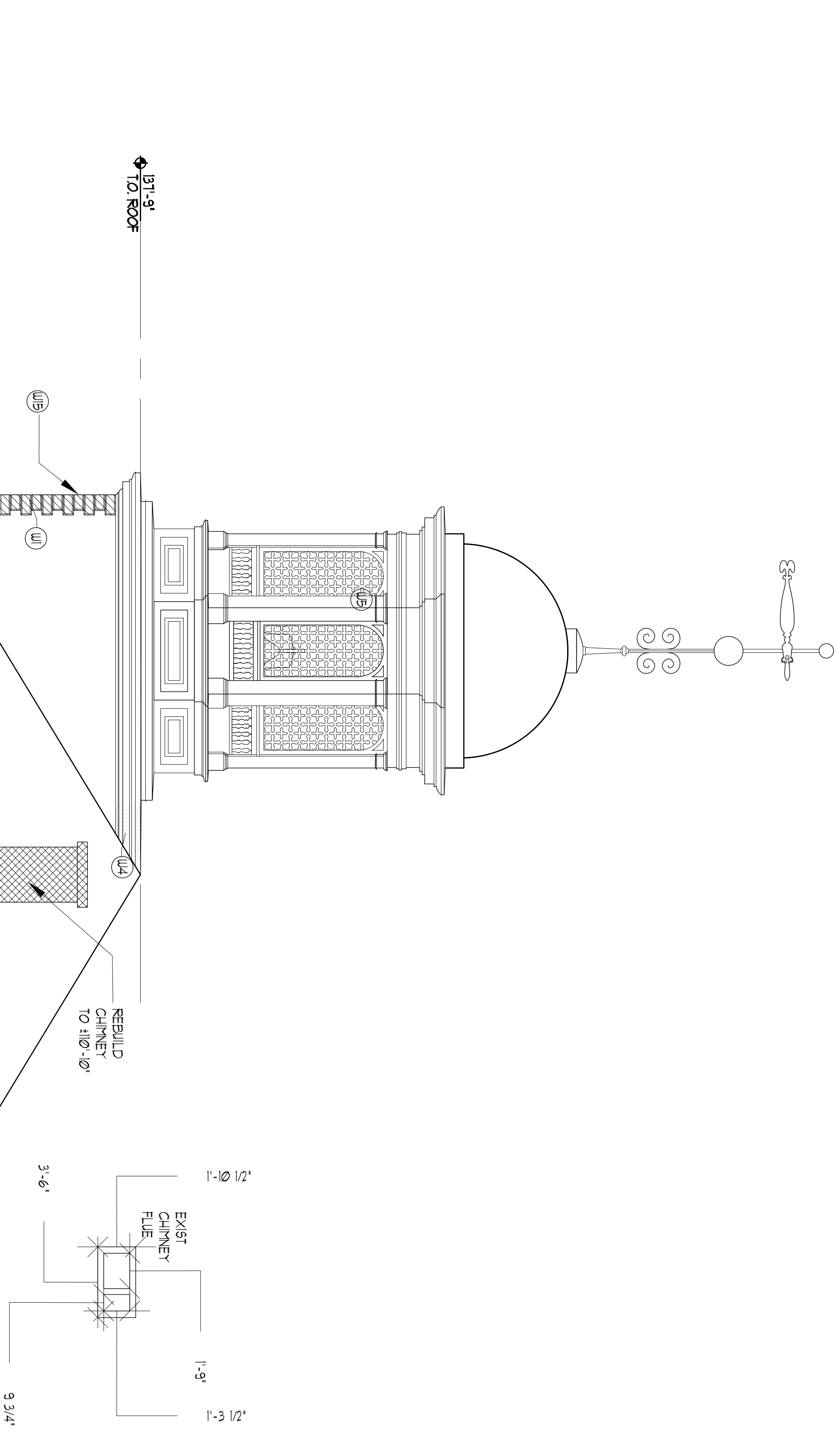
- GENERAL CONDITION ASSESSMENT NOTES**
1. CONTRACTOR TO VERIFY & REMOVE BY GRADING OUT ANY "HILL ELEMENTS" EMBEDDED IN BRICK USED ON ITEMS THAT ARE BEING REMOVED & REPOINTED AS RECD
 2. CONTRACTOR TO VERIFY & REMOVE BY GRADING OUT ANY "HILL ELEMENTS" EMBEDDED IN BRICK USED ON ITEMS THAT ARE BEING REMOVED & REPOINTED AS RECD
 3. CONTRACTOR TO VERIFY & REMOVE BY GRADING OUT ANY "HILL ELEMENTS" EMBEDDED IN BRICK USED ON ITEMS THAT ARE BEING REMOVED & REPOINTED AS RECD
 4. PRE-TREAT ALL SIDES OF NEW REPAIR TRIM PIECES, PRIME BACK FRAME AND END FRAME FINISH PAINT EXPOSED SURFACES
 5. REMOVE ALL EXISTING GUTTER OPEN JOINTS UP TO 1/2" WIDE SHALL BE CUT AND JOINTS LARGER THAN 1/2" WIDE TO RECEIVE EPDM GUTTER REPAIR

RESTORATION KEY

- /// NORTH FACE SOFT OR MISSING
- ACTION CUT BACK 1/2" - (3) LIFTS 1/2" EACH
- (25%) 5% DEEP REPOINT W/ FINAL 3/4" (3) LIFTS
- ABANDONED METAL ELEMENTS TO BE GRADDED OUT & REPOINTED AS RECD
- REMOVE DOWN SPOUT SUPPORT AND REPOINT
- ▨ REMOVE & REBUILD BRICK
- ▩ WOOD TREATMENT. SEE WOOD TREATMENT KEY
- NOTES
- PHOTO REFERENCE. SEE SPEC

WOOD TREATMENT NOTES

1. REMOVE MISSING OR NON-REPAIRABLE WOOD TRIM
2. REMOVE ALL WOOD TRIM TO MATCH EXISTING PROFILE
3. REMOVE ALL WOOD TRIM TO MATCH EXISTING PROFILE
4. REMOVE EXISTING METAL GUTTER BACKER TRIM AND SPOUT AS SHOWN IN DETAIL XXXX
5. REPLACE WITH NEW METAL GUTTER AND WOOD TRIM TO MATCH EXISTING PROFILE
6. EPDM GUTTER REPAIR
7. EPDM GUTTER REPAIR
8. NEW PLUMBING TIE-BOLDS TO MATCH EXISTING PRE-TREAT ALL SIDES
9. REMOVE BACK FRAME END FRAME AND PAINT
10. REMOVE EXISTING DOOR AND HARDWARE. STAIN STRIP PAINT. PREP FOR NEW PAINT AND HARDWARE
11. CLEAN AND REINSTALL VERTICAL DECAPOLE'S. DISABLE DECAPOLE'S TO BECOME INOPERABLE
12. REMOVE EXISTING WINDOW SLASH STAIN STRIP REFINISH AND REINSTALL AS PER SPEC SECTION XXXXX
13. REMOVE EXISTING LIGHT FIXTURE. PREP FOR NEW FIXTURE. INSTALL NEW WOOD KEYS/STONE TO MATCH PRE-TREAT ALL SIDES OF NEW KEYS/STONE. INCLUDING GROUPEL HOLE FOR NEW FIXTURE.
14. REBUILD 7 CLOVERS
15. REBUILD 7 CLOVERS
16. REMOVE EA. BACK PANEL & REINSTALL
17. HANG SCREWS & CENTER W/ 65 TRIM SCREWS
18. BACK PANEL - OPERABLE - NEEDS 2 NEW 65 HINGES
19. ADD HANG UP TO ROOF LATCH + GOOD CONDITION
20. REBUILD PANEL 51
21. REMOVE NOTED UP FOR REPAIRMENT
22. REMOVE AND REPLACE ALL CONS WITH WESTERN RED CEDAR (TYP ALL SIDES)



1 EXISTING CONDITION - WEST ELEVATION

SCALE: 1/4" = 1'-0"

UNIVERSITY OF NEW ENGLAND
ALUMNI HALL RENOVATION
CONDITION ASSESSMENT

Project Number: 14525
Date: March 4, 2015
Drawn by: JP TSM:AR
Checked by: LAS

CA1.4

Scale: AS NOTED

UNIVERSITY OF NEW ENGLAND

Allied Engineering
Structural Mechanical Electrical Commissioning

CONSIGLI
Est. 1995

BECKER
STRUCTURAL ENGINEERS

HP SUBMISSION NOT FOR CONSTRUCTION

65 NEWBURY STREET
PORTLAND, ME 04101
207.761.9000
info@portcityarch.com
WWW.PORTCITYARCH.COM

No.	Description	Date

PRELIMINARY NOT FOR CONSTRUCTION