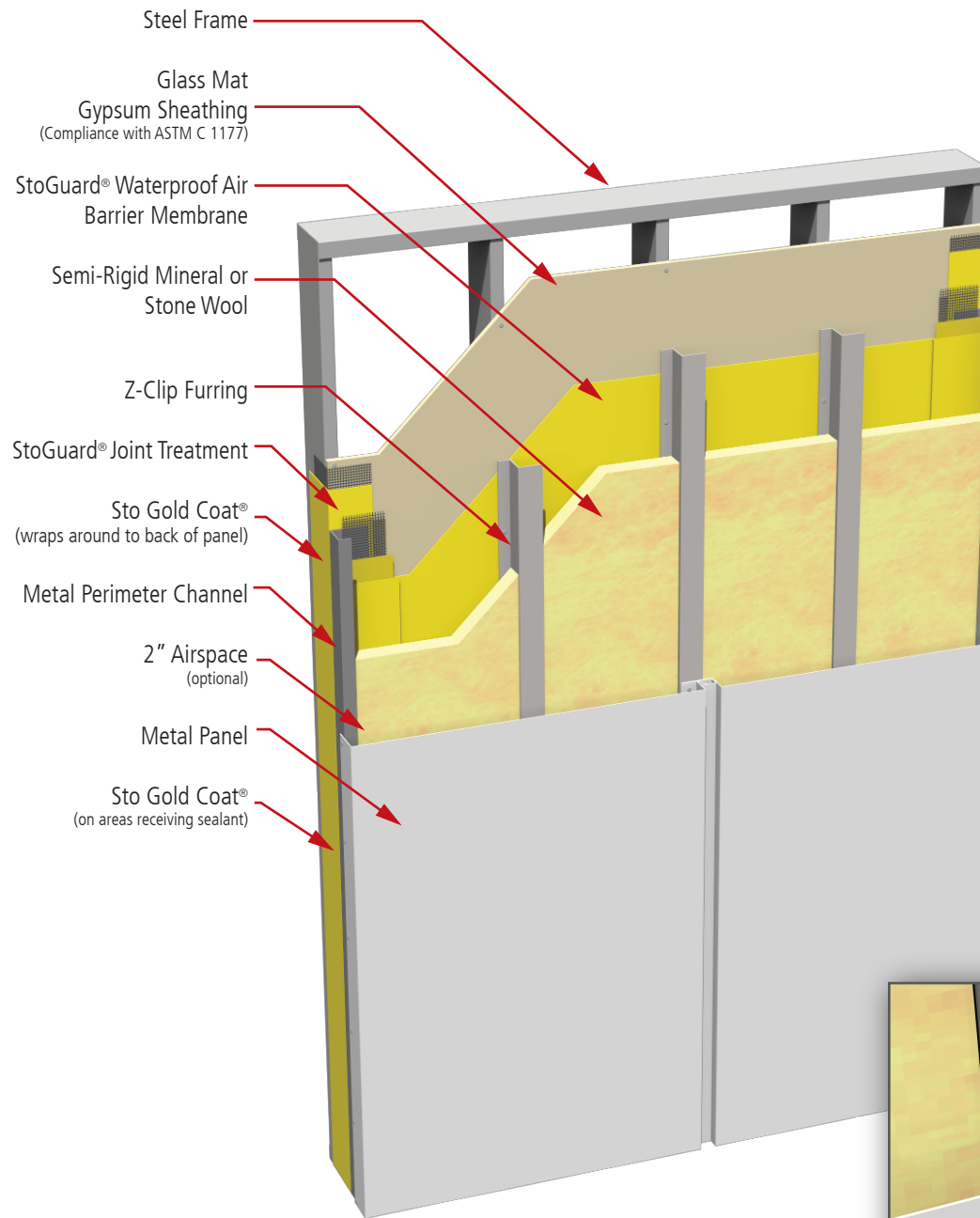
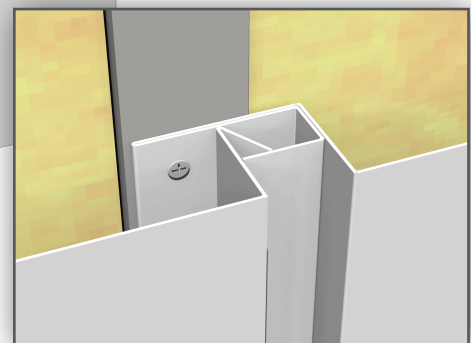


StoPanel® Metal with Semi-Rigid Mineral or Stone Wool



Notes:

- 1. Description:** lightweight energy efficient pre-fabricated exterior wall panel with exterior insulation, continuous air barrier, and integral decorative and protective finish options
- 2. Building Code Compliance:** meets requirements of NFPA 285 and NFPA 268 for use on noncombustible construction (Types I-IV). Refer to ICC ESR 1233.
IBC 2009 and 2012
 Chapter 7: Fire Resistance Rated Construction
 Chapter 16: Structural - Transverse Wind Load Resistance
IECC 2009 and 2012
 Chapter 4: Continuous Air Barrier
IGCC 2012
 Chapter 6: Energy Conservation, Efficiency and Atmospheric Quality (Section 606: Building Thermal Envelope insulation and Air Sealing)
 Alternative Compliance Path: ASHRAE 189.1-2009
- 3. Energy Standards Compliance**
 ASHRAE 90.1 - 2007 and 2010
 Section 5: Continuous Air Barrier
- 4. Green Building Standards Compliance**
 ASHRAE 189.1 - 2009
 Normative Appendix B: Continuous Air Barrier
- 5. LEED Eligibility**
 Eligible contribution towards credits in the following NC (New Construction) categories:
 Energy and Atmosphere (EA)
 Materials and Resources (MR)
 Innovation in Design (ID)



ATTENTION

Sto products are intended for use by qualified professional contractors, not consumers, as a component of a larger construction assembly as specified by a qualified design professional, general contractor or builder. They should be installed in accordance with those specifications and Sto's instructions. Sto Corp. disclaims all, and assumes no, liability for on-site inspections, for its products applied improperly, or by unqualified persons or entities, or as part of an improperly designed or constructed building, for the nonperformance of adjacent building components or assemblies, of for other construction activities beyond Sto's control. Improper use of Sto products or use as part of an improperly designed or constructed larger assembly or building may result in serious damage to Sto products, and to the structure of the building or its components.

STO CORP. DISCLAIMS ALL WARRANTIES EXPRESSED OR IMPLIED EXCEPT FOR EXPLICIT LIMITED WRITTEN WARRANTIES ISSUED TO AND ACCEPTED BY BUILDING OWNERS IN ACCORDANCE WITH STO'S WARRANTY PROGRAMS WHICH ARE SUBJECT TO CHANGE FROM TIME TO TIME. For the fullest, most current information on proper application, clean-up, mixing and other specifications and warranties, cautions and disclaimers, please refer to the Sto Corp. website, www.stocorp.com.

sto
Sto Panel Technology

3800 Camp Creek Parkway
 Building 1400, Suite 120
 Atlanta, Georgia 30331
 Phone: (888) 227-8334 Fax: (856) 690-0100
www.stocorp.com

PROJECT:				
ARCHITECTS:				
CONSTRUCTION MGR.:				
TITLE:				
SCALE:	DATE:	REVISION:	PROJ.N°:	DWG N°: