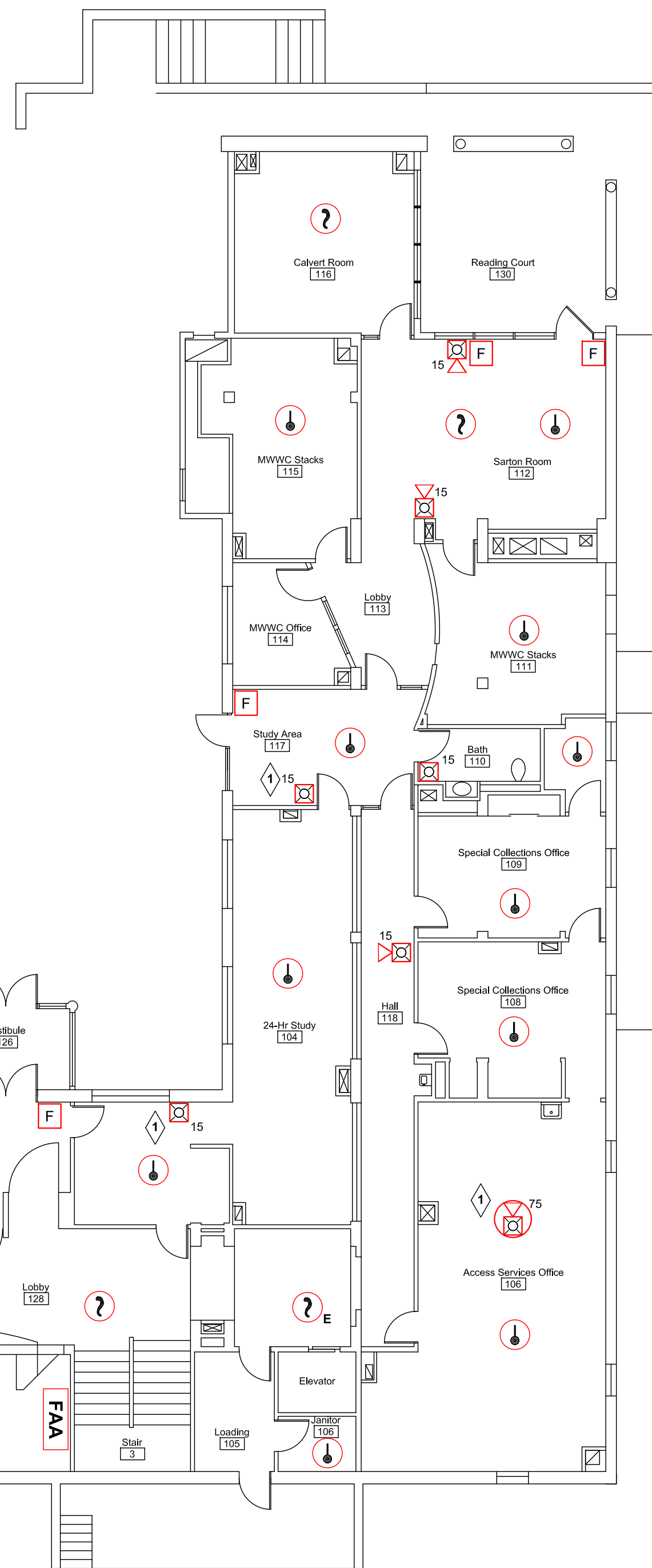
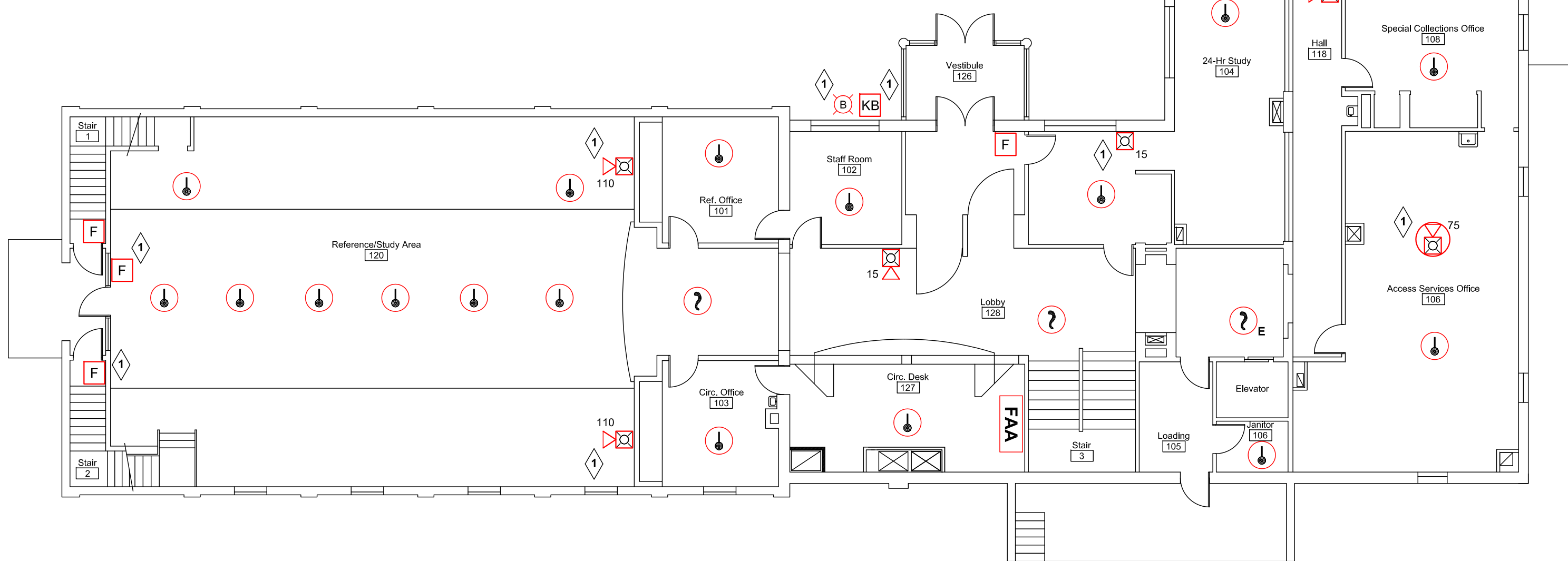


LEGEND:

RISER DIAG SYM	NFPA SYMBOL*	DESCRIPTION	CATALOG #
FACP	FACP	Fire Alarm Control Panel (EXISTING)	IO500
BPS	FACU	Notification Power Extender (Fire Alarm Control Unit)	BPS10A
FAA	FAA	Fire Alarm Remote Annunciator	RLCD-C
F	P	Manual Pull Station	SIGA-278
? E	? (E Denotes Elevator Recall Device)	Smoke Detector w/Base	SIGA2-PS SIGA-SB
? E	? (E Denotes Elevator Recall Device)	Heat Detector w/Base	SIGA2-HFS SIGA-SB
? D	? (D Denotes Duct Detector)	Duct Smoke Detector w/Sampling Tube	SIGA-SD SD-Txx
RTS	RTS	Remote Alarm Indicator & Key Test Station	SD-TRK
CTX	AOM	Addressable Monitor Module (x Denotes Single or Dual Monitor)	SIGA-CT1,2
CR	AOM	Addressable Control Relay	SIGA-CR
⊗	⊗	Wall Mount Strobe Unit (Adjustable Candela)	G1RF-VM
⊗	⊗	Wall Mount Horn/Strobe Unit (Adjustable Candela)	G1RF-HDVM
⊗	⊗	Ceiling Mount Horn/Strobe Unit (Adjustable Candela)	GCF-HDVM
B	B	Exterior Beacon	495S-1280R

* NFPA 170 (2009)
Tables: 6.5, 6.7.1, 6.7.2, & 6.7.3

1 New Device Locations to be Added to System



DWG NAME:
Abplanalp Library
University of New England
Portland, ME
First Floor Plans
DWG NAME: FA104

R.B. Allen Co., Inc.
P.O. BOX 770
131 LAFAYETTE ST.
NO. HAMPTON, NH 03862
1-800-258-7264

EMERGENCY SYSTEM TECHNOLOGY

JOB NAME:
Abplanalp Library
University of New England
Portland, ME
First Floor Plans

REV.	DESCRIPTION	DATE	DRWN:	IRWD:
0	Original Issue	3/16	CLA	TRD

SCALE: 3/32" = 1'0"
PO No.
Abplanalp Library
UNE
Portland, ME
First Floor
DWG No. FA104

Scale: 3/32" = 1'0"