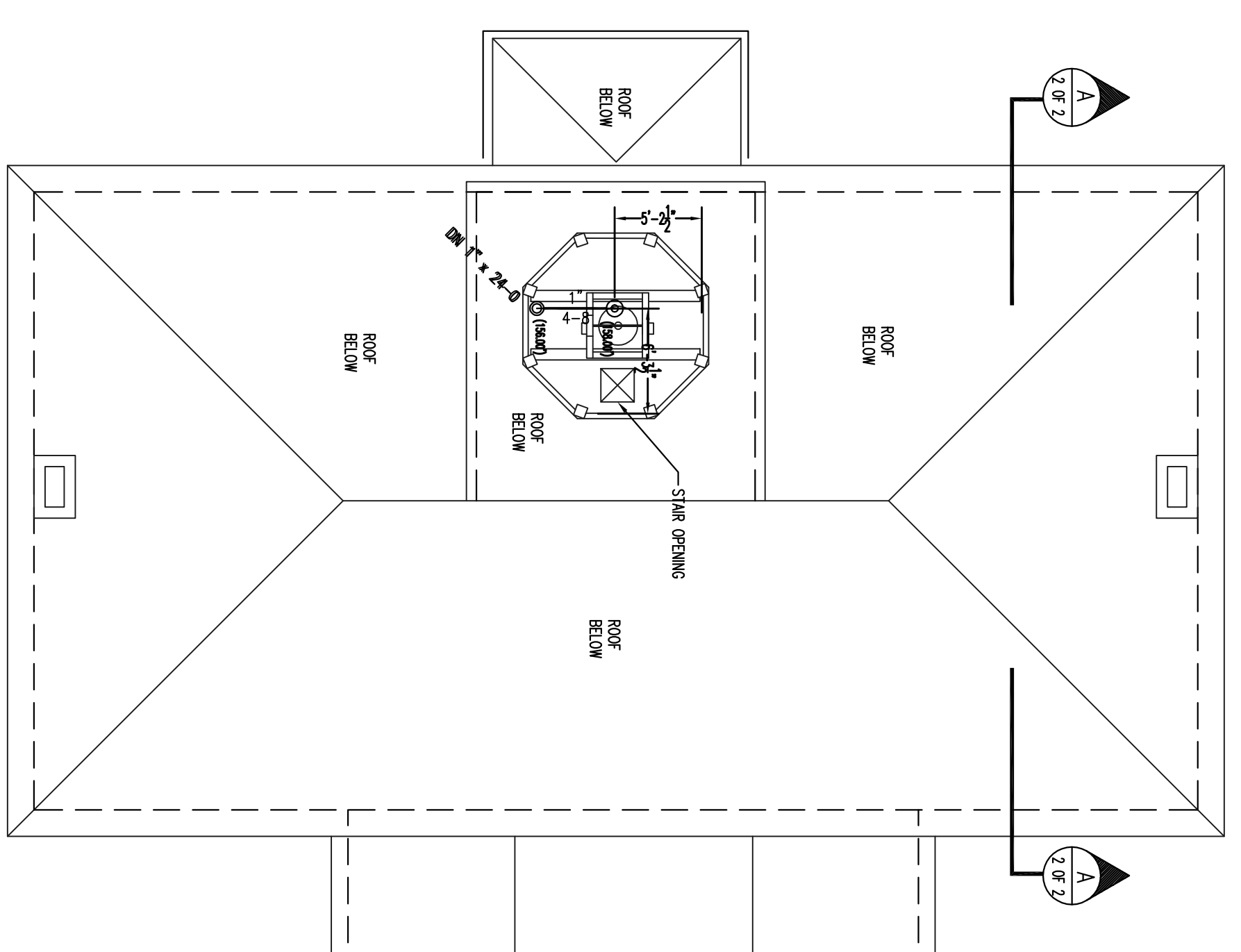


HYDRAULIC-SYSTEM
 THIS BUILDING IS PROTECTED BY A HYDRAULICALLY DESIGNED AUTOMATIC SPRINKLER SYSTEM.
HEATED ATTIC
 LOCATION: DRY SYSTEM
 No. OF SPRINKLERS: 13
 BASIS OF DESIGN:
 1. DESIGN (NEW/ST): .10
 2. DESIGNED AREA OF PROTECTION (sq.ft.): 1275 SQ FT
 SYSTEM DEMAND:
 1. WATER FLOW RATE: 231.52 GPM
 2. RESIDUAL PRESSURE AT BASE OF SYSTEM RISER: 48.070 PSI

HYDRAULIC DATA NAMEPLATE
 TO BE MOUNTED AT SYSTEM RISER

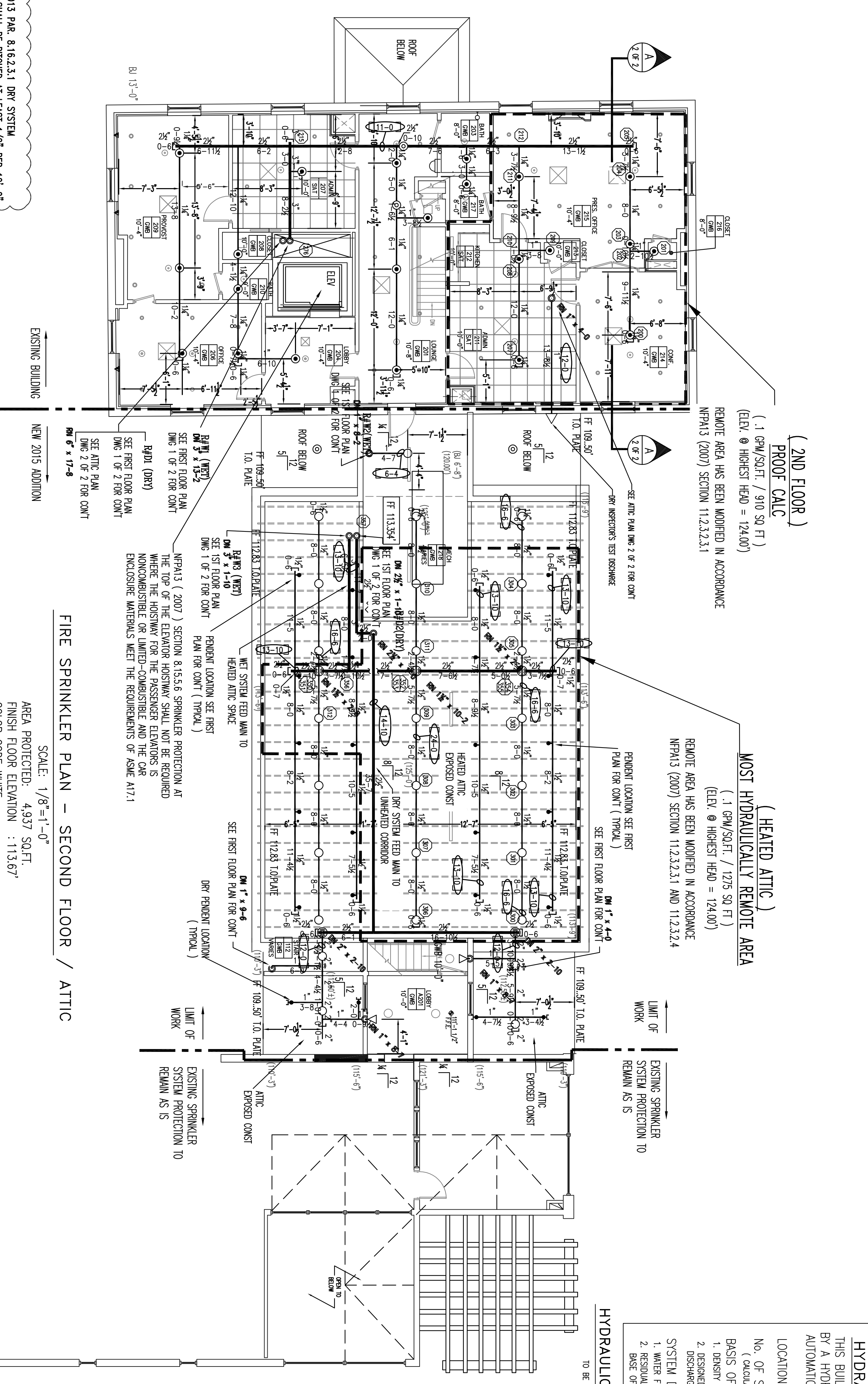


FIRE SPRINKLER PLAN - ATTIC BELL TOWER
 SCALE: 1/8"=1'-0"
 AREA PROTECTED: 88 SQ.FT.
 FINISH FLOOR ELEVATION: 141.08'
 COLOR CODE: YELLOW

Sprinkler Head Schedule

Symbol	Count	Thread	SIN#	K-FACTOR	TEMP	Description	Note
⊙	1	1/2"	RA1425	5.6	200°	RELIABLE FTR 56 BRASS UPRIGHT	ON SPRING

1 = Total Number of Heads Attic



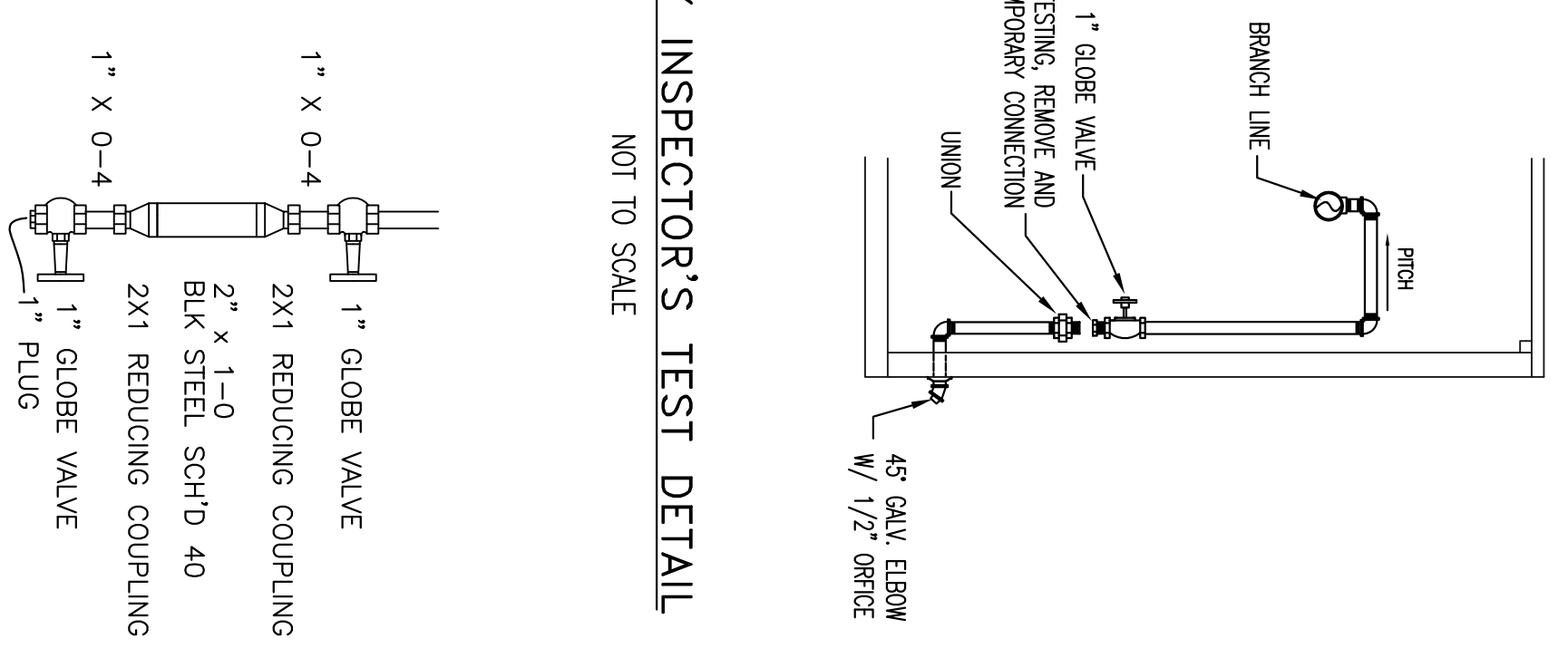
FIRE SPRINKLER PLAN - SECOND FLOOR / ATTIC
 SCALE: 1/8"=1'-0"
 AREA PROTECTED: 4,937 SQ.FT.
 FINISH FLOOR ELEVATION: 113.67'
 COLOR CODE: WHITE

Sprinkler Head Schedule

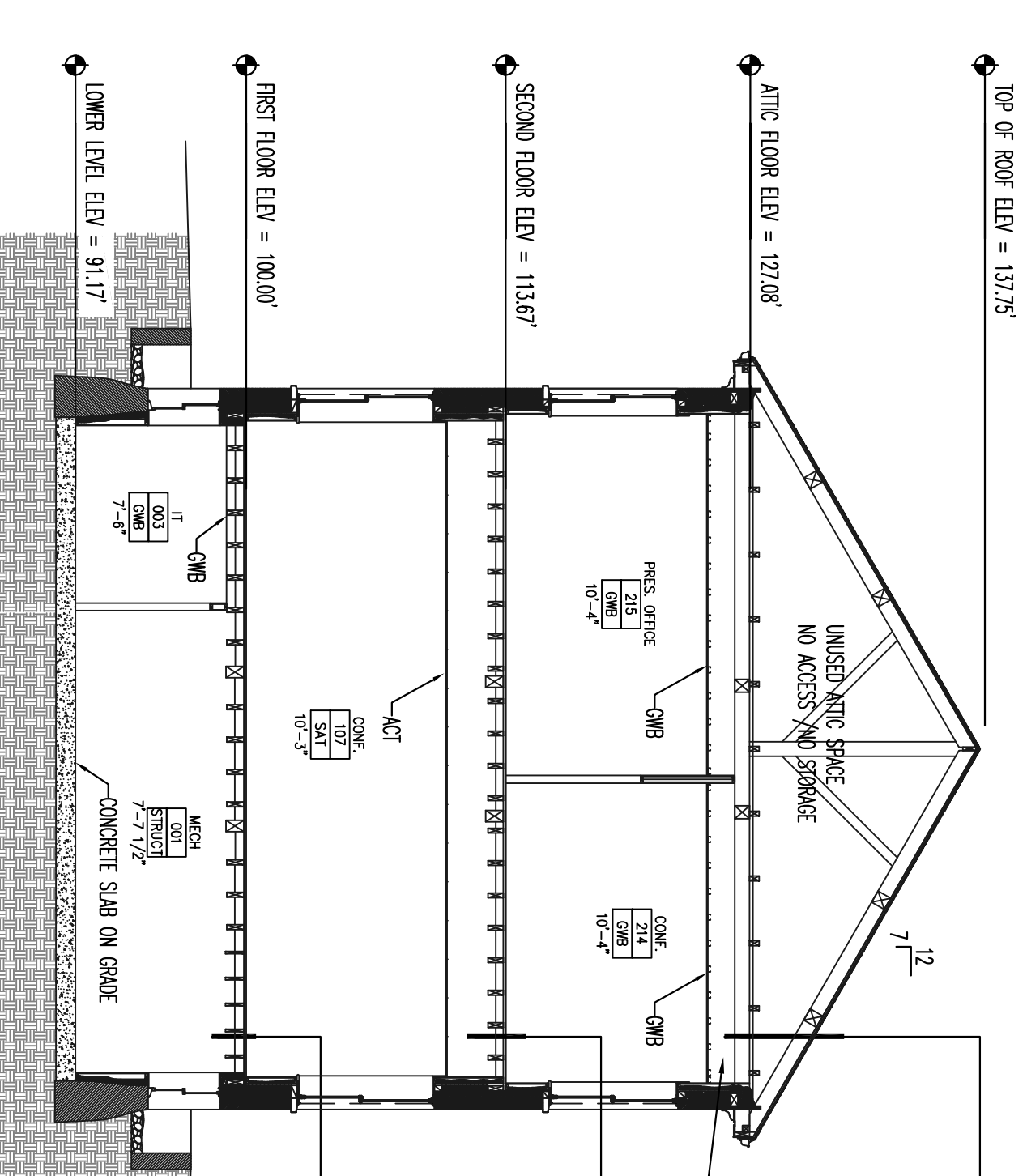
Symbol	Count	Thread	SIN#	K-FACTOR	TEMP	Description	Note
⊙	26	1/2"	RA1425	5.6	200°	RELIABLE FTR 56 BRASS UPRIGHT	ON LINE
⊙	4	1/2"	RA1425	5.6	200°	RELIABLE FTR 56 BRASS UPRIGHT	ON SPRING
⊙	22	1/2"	RA1414	5.6	200°	RELIABLE FTR 56 WHITE PENDENT W/WHITE RECESSED ESCUTCHEON	ON DROP
◁	2	1/2"	RA1435	5.6	200°	RELIABLE FTR 56 WHITE HOZ. SIDEWALL W/WHITE RECESSED ESCUTCHEON	

79 = Total Number of Heads 2ND FLOOR / ATTIC

DRY INSPECTOR'S TEST DETAIL
 NOT TO SCALE



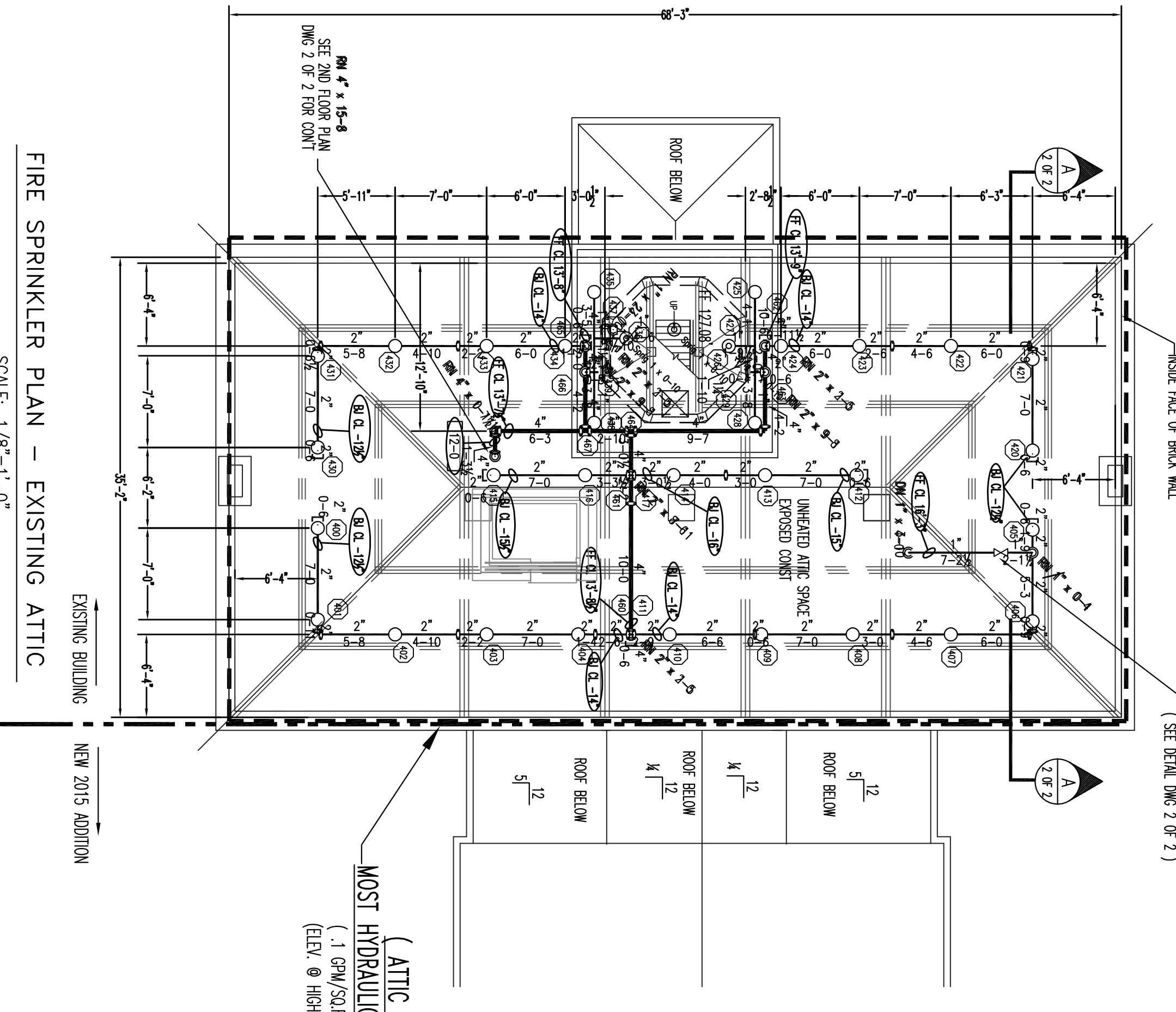
DRY SYSTEM AUXILIARY DRAIN DETAIL
 NOT TO SCALE



BUILDING SECTION A-A
 NOT TO SCALE

HYDRAULIC-SYSTEM
 THIS BUILDING IS PROTECTED BY A HYDRAULICALLY DESIGNED AUTOMATIC SPRINKLER SYSTEM.
(UNHEATED ATTIC)
 LOCATION: DRY SYSTEM
 No. OF SPRINKLERS: 47
 BASIS OF DESIGN:
 1. DESIGN (NEW/ST): .10
 2. DESIGNED AREA OF PROTECTION (sq.ft.): 2397 SQ FT
 SYSTEM DEMAND:
 1. WATER FLOW RATE: 525.63 GPM
 2. RESIDUAL PRESSURE AT BASE OF SYSTEM RISER: 42.450 PSI

HYDRAULIC DATA NAMEPLATE
 TO BE MOUNTED AT SYSTEM RISER

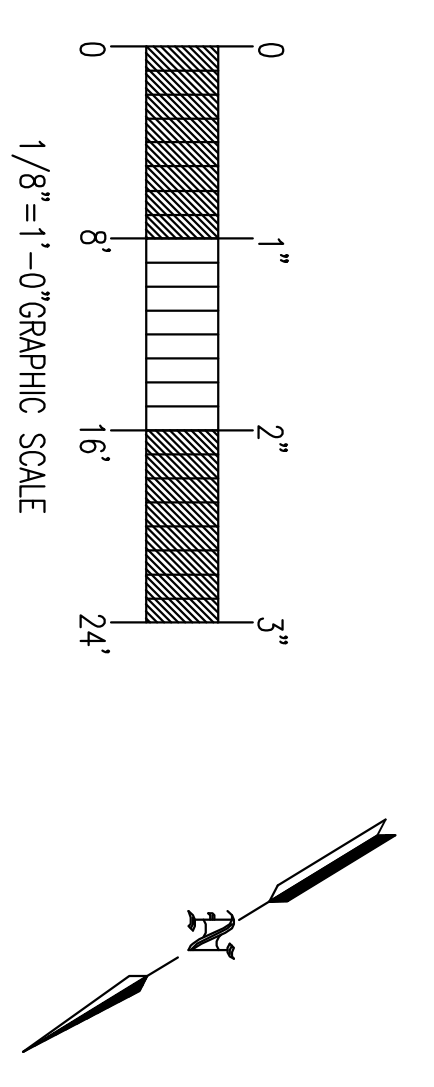


FIRE SPRINKLER PLAN - EXISTING ATTIC
 SCALE: 1/8"=1'-0"
 AREA PROTECTED: 2,397 SQ.FT.
 FINISH FLOOR ELEVATION: 127.08'
 COLOR CODE: YELLOW

Sprinkler Head Schedule

Symbol	Count	Thread	SIN#	K-FACTOR	TEMP	Description	Note
⊙	30	1/2"	RA1425	5.6	200°	RELIABLE FTR 56 BRASS UPRIGHT	ON LINE
⊙	3	1/2"	RA1425	5.6	200°	RELIABLE FTR 56 BRASS UPRIGHT	ON SPRING

33 = Total Number of Heads Attic



GENERAL NOTES

SPRINKLER SYSTEM INSTALLATION TO COMPLY WITH NFPA PARAGRAPH 7.13 (2007) AND SPECIFICATION SECTION 21100.

BRANCH LINE PIPING 1" THRU 2" TO BE BLACK STEEL SCHEDULE 40 JOINED BY HEADED OUTLET FROM FITTINGS.

MAIN PIPING 2" THRU 6" TO BE BLACK STEEL SCHEDULE 10 WITH BRASS COUPLERS AND WELDED OUTLETS JOINED BY WELDMANUAL.

OWNER TO PROVIDE SUFFICIENT HEAD THROUGHOUT BUILDING TO MAINTAIN 2.0 PSI MINIMUM PRESSURE AT EACH SPRINKLER HEAD EQUIPMENT (MIN 40' F) EXCEPT FOR UNHEATED SPACES WHICH WILL BE PROTECTED WITH A DRY PIPE SYSTEM.

REQUIRED APPROVALS

OWNER / ARCHITECT: STATE FIRE MARSHAL, PORTLAND, ME 0971

DESIGN BY: GRD, GEN# 09388

CHECKED BY: WAF, GEN# 095574

CONTRACTOR LICENSE # 101

CONTRACTOR REG # 368

CONTRACT WITH: CONSULT

EASTERN FIRE PROTECTION
 AUBURN/LEWISTON INDUSTRIAL AIRPARK, AUBURN, MAINE 04270

UNE ALUMNI HALL RENOVATIONS
 PORTLAND, ME

FIRE SPRINKLER PLANS & DETAILS

DWG. NO. 2 OF 2

JOB NUMBER: AU-5242-15

SCALE: AS NOTED

DATE: 11/19/15