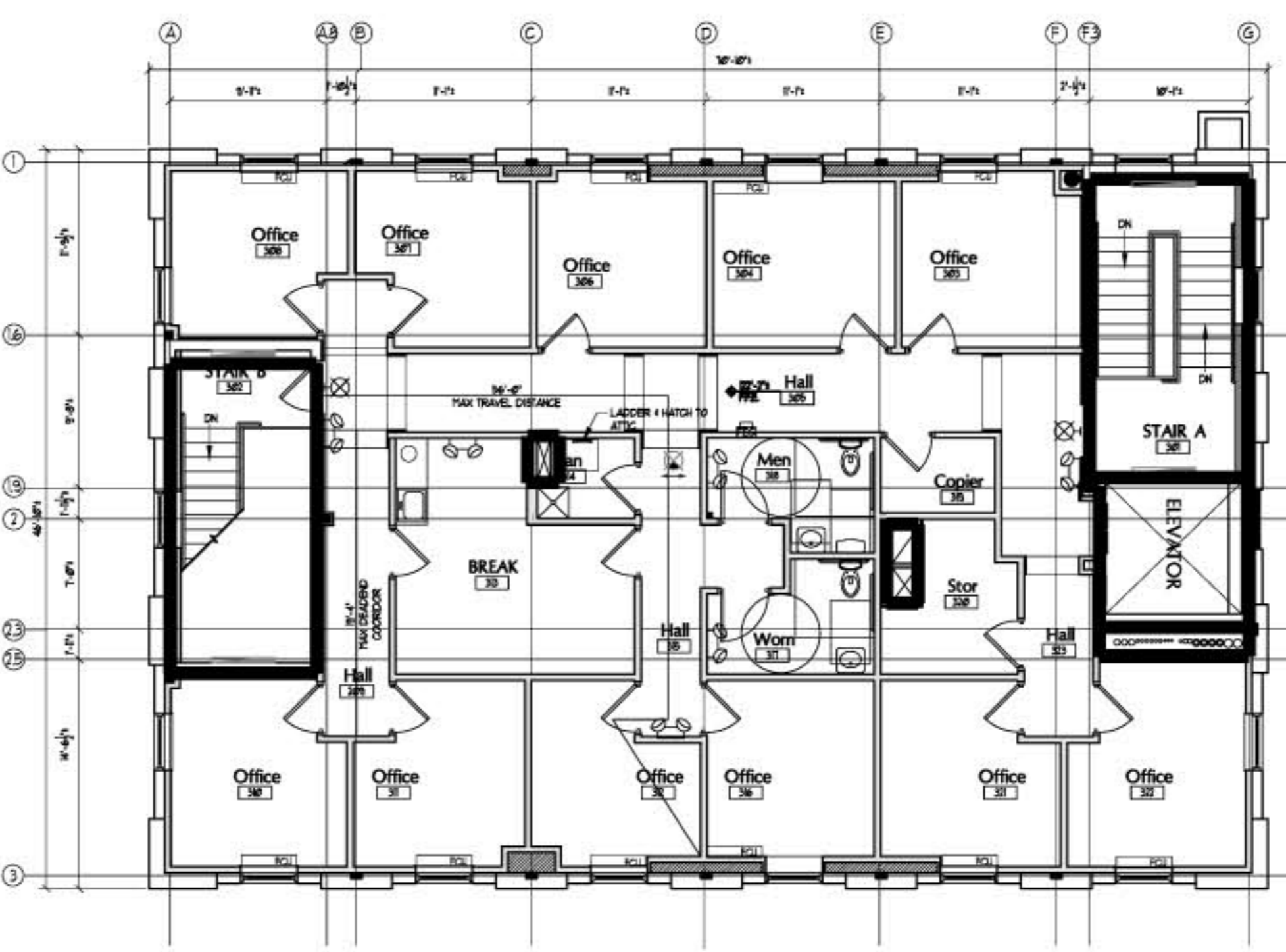
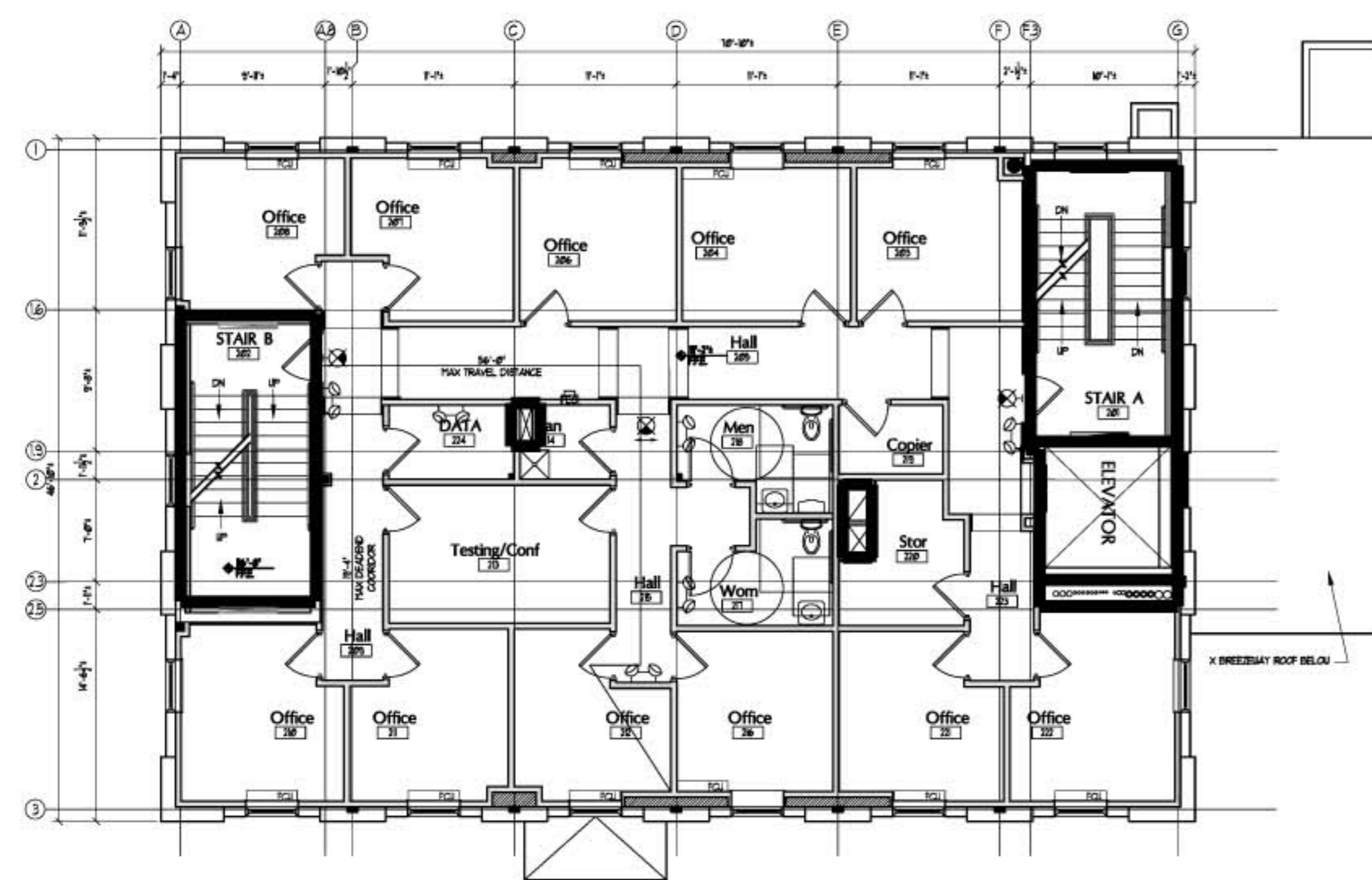
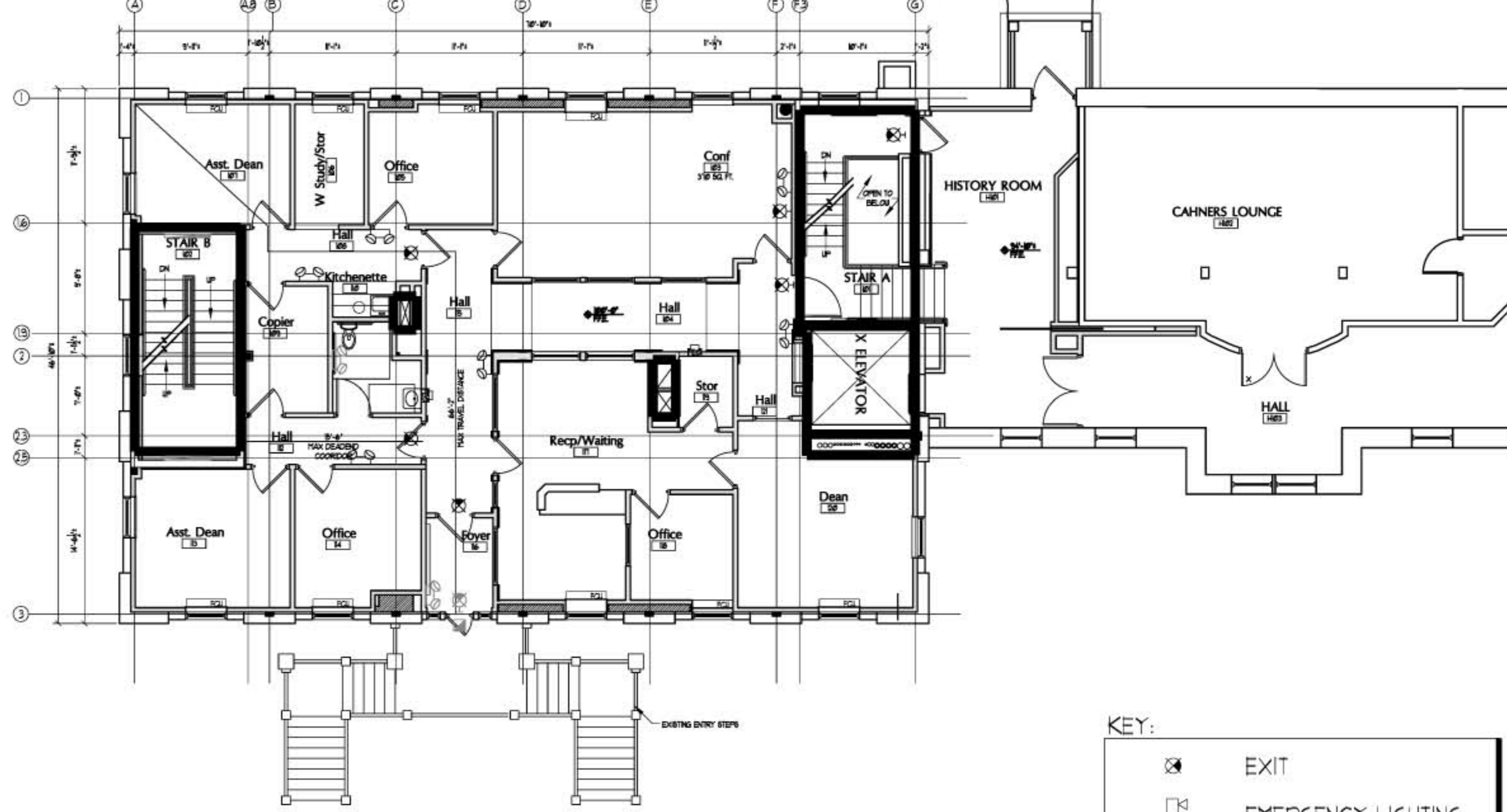
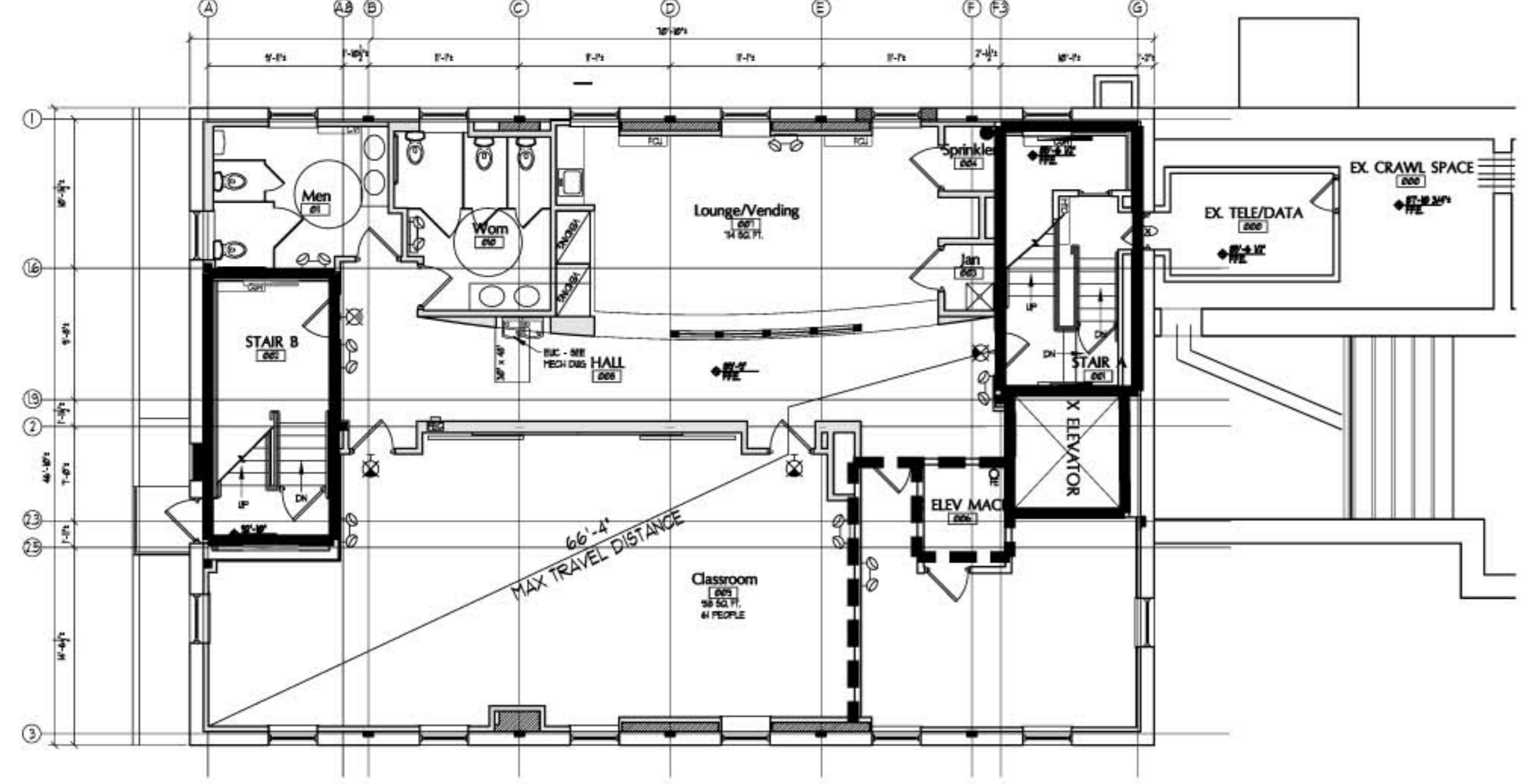








CONSULTANTS:

IF THIS SHEET IS NOT 24 X 36 IT IS A REDUCED SCALE PRINT - SCALE ACCORDINGLY

SCALE 1"=1'-0"
 SCALE 3/4"=1'-0"
 SCALE 1/2"=1'-0"
 SCALE 1/4"=1'-0"
 SCALE 1/8"=1'-0"



KEY:

-  EXIT
-  EMERGENCY LIGHTING
-  1HR FIRE RATING
-  2HR FIRE RATING

BUILDING CODE ANALYSIS

UNIVERSITY OF NEW ENGLAND
 GODDARD INTERIOR FITOUT RENOVATION
 LL SQ. FT.: 3317.5 SQ. FT.
 1ST FLOOR: 3317.5 SQ. FT.
 2ND FLOOR: 3317.5 SQ. FT.
 3RD FLOOR: 3317.5 SQ. FT.
 TOTAL: 13270 SQ. FT.

PROJECT DESCRIPTION: THIS PROJECT IS AN EXTERIOR RENOVATION AND STABILIZATION OF AN EXISTING FOUR STORY BUILDING. THE BUILDING WILL BE REMODELED IN THE FUTURE FOR OFFICES AND SUPPORT FUNCTIONS. THE GROSS BUILDING AREA IS 13,270 S.F. AND WILL BE CONSTRUCTED OF MATERIALS AS ALLOWED BY THE CONSTRUCTION TYPE. THERE WILL BE A FULLY AUTOMATIC SPRINKLER SYSTEM INSTALLED THROUGHOUT THE BUILDING.

1. BUILDING CODES: NFPA 101 LIFE SAFETY CODE, 2009
 IBC INTERNATIONAL BUILDING CODE 2009
 MAINE STATE PLUMBING CODE
2. CONSTRUCTION TYPE: 3B UNPROTECTED CONSTRUCTION
3. OCCUPANCY: GROUP "B" BUSINESS
4. HEIGHT MODIFICATION: IBC 504.2: ADD ONE STORY AND 20 FT. THEREFORE 3 STORIES ABOVE GRADE IS ALLOWED.
5. AREA MODIFICATION: IBC TABLE 503: 9,000 S.F.
 IBC 506.2: STREET FRONTAGE: ADD 75%
 IBC 506.3: AUTOMATIC SPRINKLER: ADD 200%
 TOTAL ALLOWABLE: 33,750 S.F. / STORY
6. SEPARATIONS: A. STAIRS AND ELEVATORS SERVE THREE STORIES PLUS BASEMENT AND ARE SEPARATED BY TWO-HOUR FIRE BARRIER. (IBC 707.4)
 B. CORRIDOR WALLS ARE NOT RATED. (IBCT ABLE 1016.1)
7. MEANS OF EGRESS: EGRESS WIDTH SPRINKLERED BUILDING: STAIRWAY: 0.2' / PERSON; DOORS, RAMPS, & CORRIDORS: 0.15' / PERSON.
 MINIMUM CORR WIDTH: 44" WHERE SERVING > 50 OCC., 36" WHERE SERVING < 50
 MAXIMUM DEAD-END CORR: 50 FT
 MAXIMUM TRAVEL DISTANCE TO EXIT: 300 FT.
8. FIRE PROTECTION: PORTABLE FIRE EXTINGUISHERS (LS101 SECT 9.7.4.1)

**GODDARD RENOVATION
 INTERIOR SHELL**
 UNIVERSITY OF NEW ENGLAND
 Portland, Maine

1	DATE	DESCRIPTION
1	---	Design Review

REVISIONS

Date Issued: April 22, 2011
 Project Number: 10538
 Drawing Scale: 1/8" = 1'-0"
 SHEET NAME: EMERGENCY CODE PLAN

Drawn By: JAP 4 CH
 Checked By: LAS

CONSTRUCTION SET