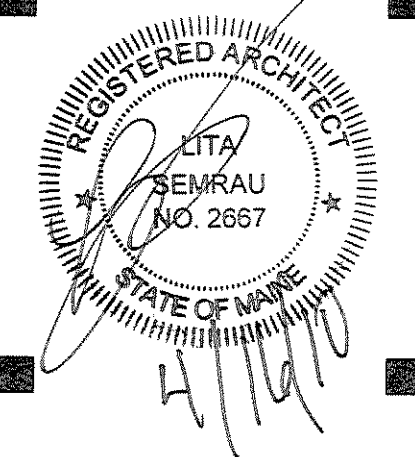


PORT CITY ARCHITECTURE

65 NEWBURY STREET
PORTLAND, ME 04101
207.761.9000
fax: 207.761.2010
lita@portcityarch.com



ALLEN COOK
CONSTRUCTION
Managers • Builders
Building Excellence Since 1958



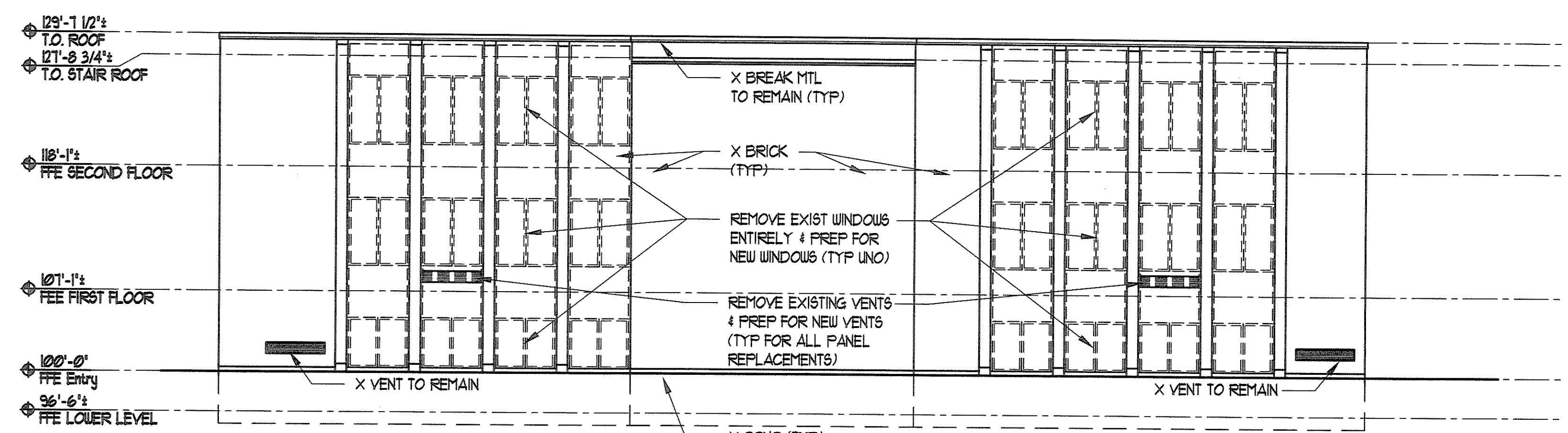
UNIVERSITY OF NEW ENGLAND
Portland Campus
Blewett Hall
Window Replacement
716 STEVENS AVENUE, PORTLAND, ME

DATE	DESCRIPTION
	BID SET
Date Issued	04/16/10
Project Number	12503

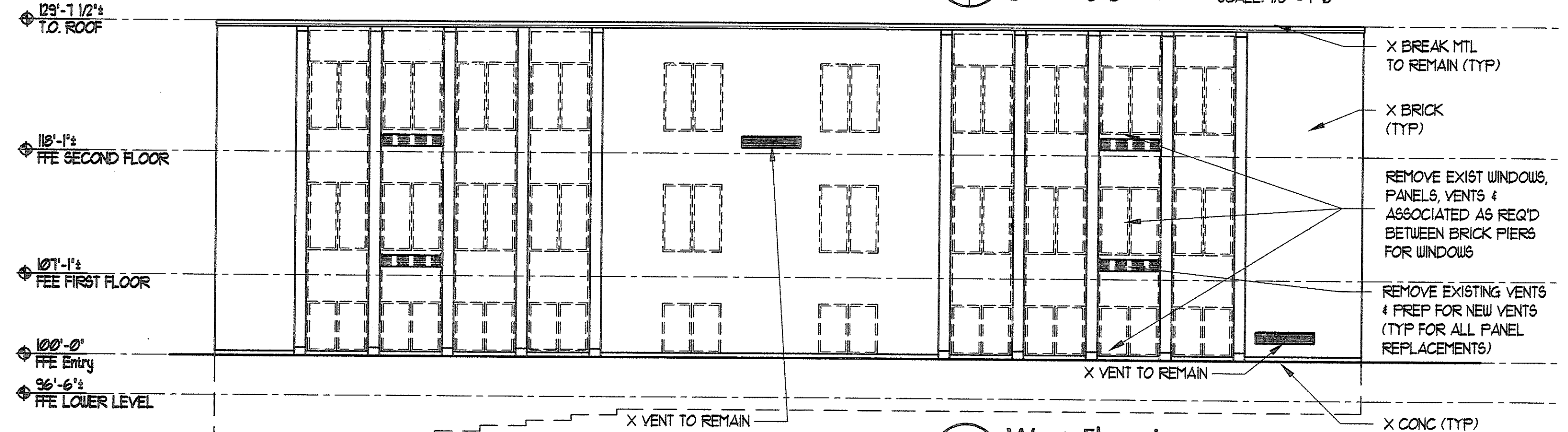
SHEET NAME
DEMOLITION ELEVATIONS

Drawn By
JP
Checked By
LAS
D1.0

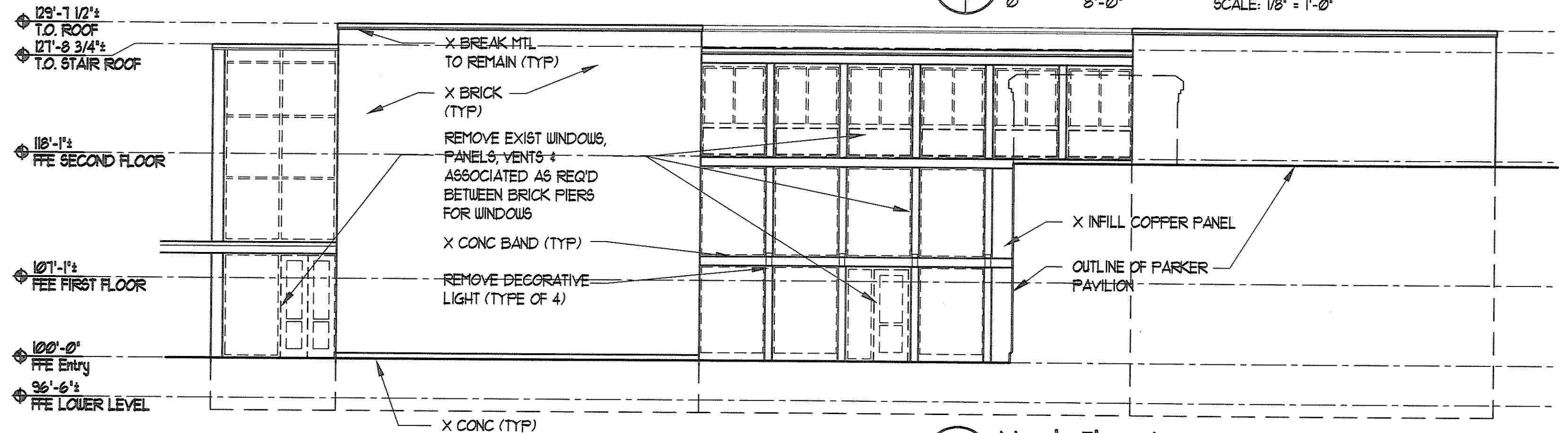
IF THIS SHEET IS NOT 24 X 36 IT IS A REDUCED SCALE PRINT - SCALE ACCORDINGLY
SCALE 1"=1'
SCALE 3/4"=1'
SCALE 1/2"=1'
SCALE 1/4"=1'
SCALE 1/8"=1'
SCALE 1/16"=1'



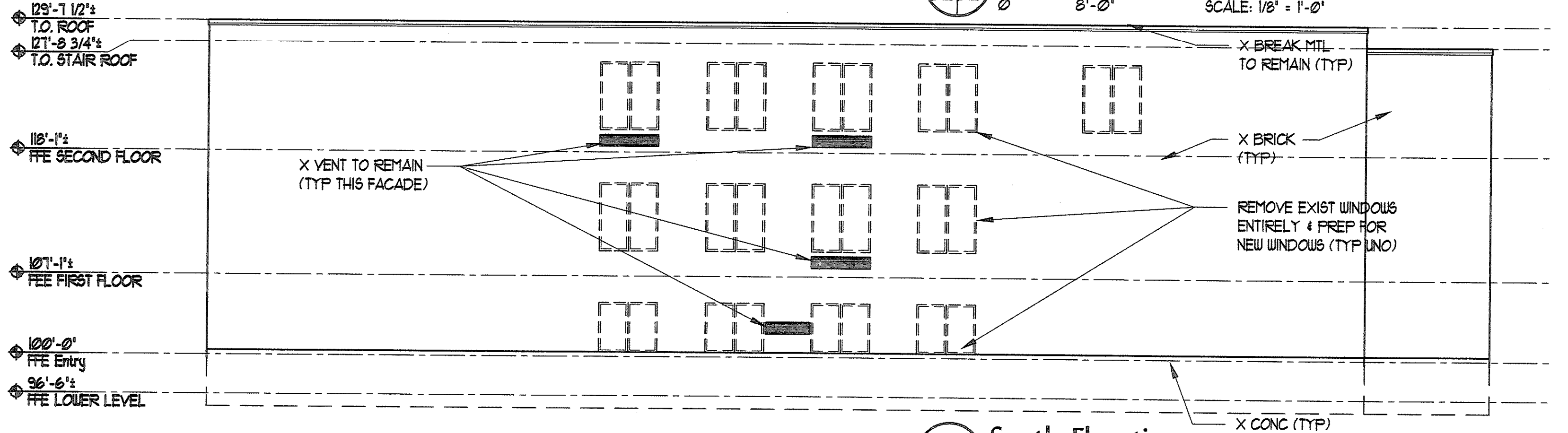
4 East Elevation
SCALE: 1/8" = 1'-0"



3 West Elevation
SCALE: 1/8" = 1'-0"



2 North Elevation
SCALE: 1/8" = 1'-0"



1 South Elevation
SCALE: 1/8" = 1'-0"

CONSTRUCTION SET