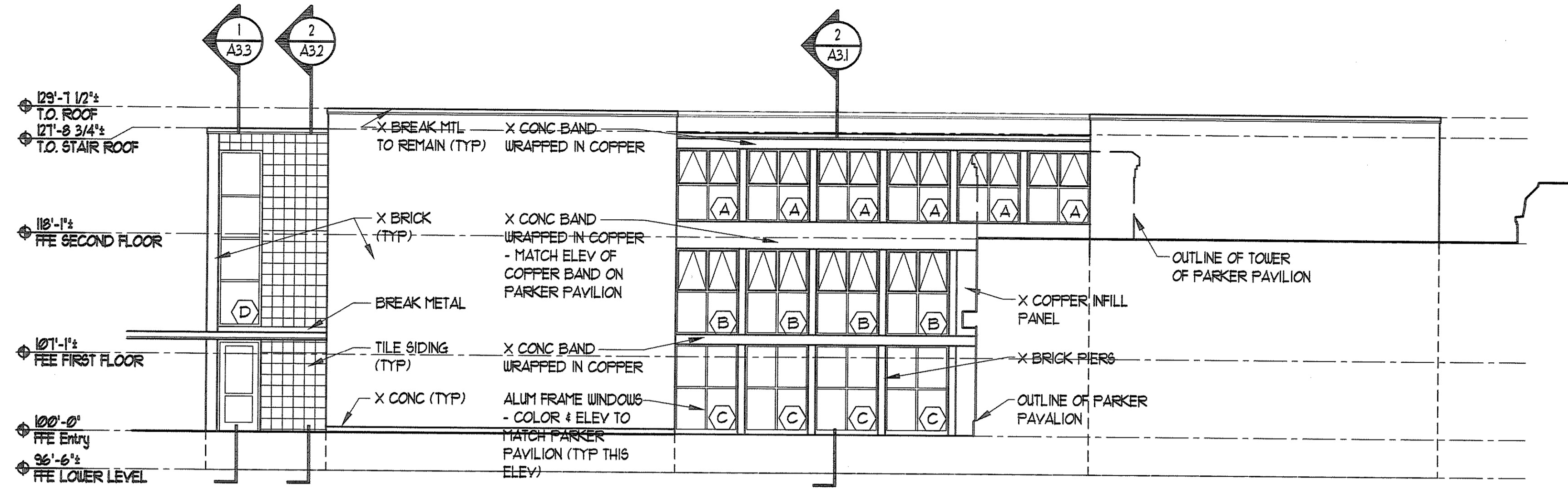
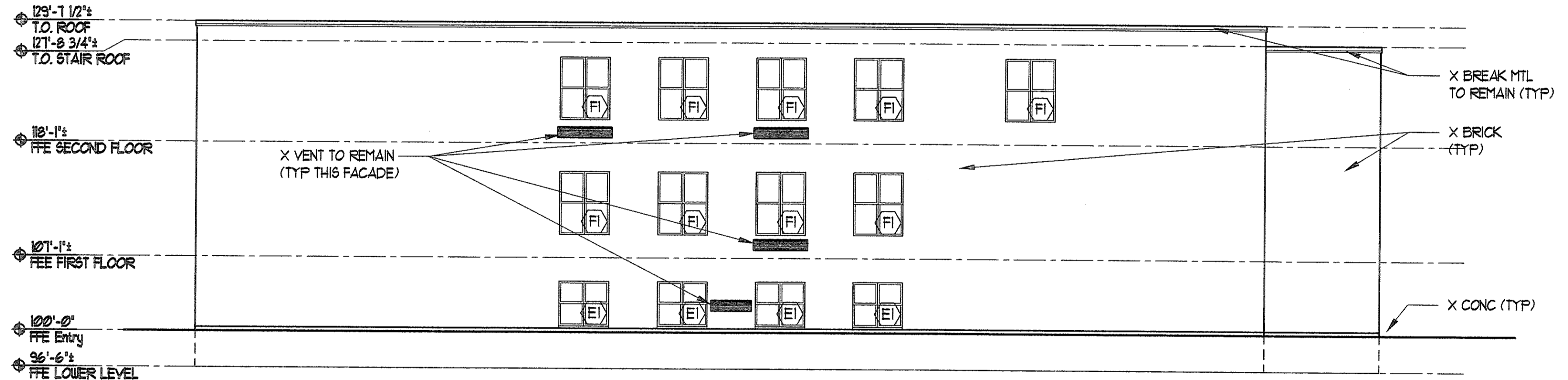


IF THIS SHEET IS NOT 24 X 36 IT IS A REDUCED SCALE PRINT - SCALE ACCORDINGLY

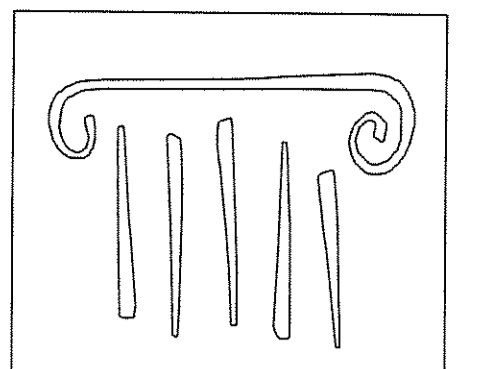
SCALE 1"=1'
SCALE 3/4"=1'
SCALE 1/2"=1'
SCALE 1/4"=1'
SCALE 1/8"=1'
SCALE 1/16"=1'



2 North Elevation
A2.1 A2.1
8'-0"
SCALE: 1/8" = 1'-0"

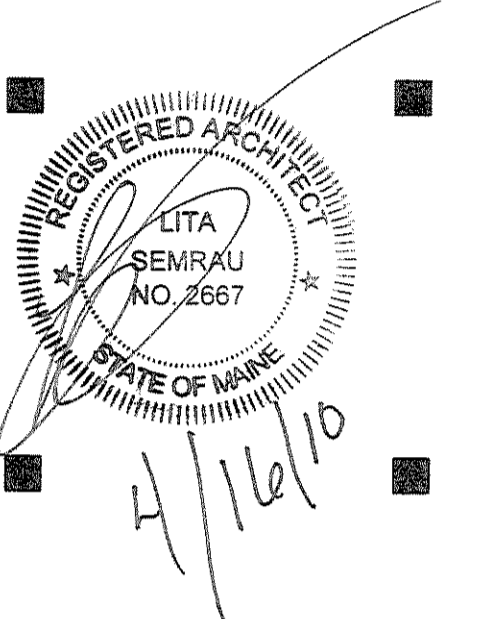


1 South Elevation
A2.1 A2.1
8'-0"
SCALE: 1/8" = 1'-0"



PORT CITY ARCHITECTURE

65 NEWBURY STREET
PORTLAND, ME 04101
207.761.9000
fax: 207.761.2010
lita@portcityarch.com



ALLIED COOK
CONSTRUCTION
Managers • Builders
Building Excellence Since 1958

UNE
UNIVERSITY OF NEW ENGLAND
Portland Campus
Blewett Hall Window Replacement
716 STEVENS AVENUE, PORTLAND, ME

DATE	DESCRIPTION
	BID SET
Date Issued	04/16/10
Project Number	10503

SHEET NAME	
ELEVATIONS	
Drawn By	JP
Checked By	LAS

A2.1

CONSTRUCTION SET