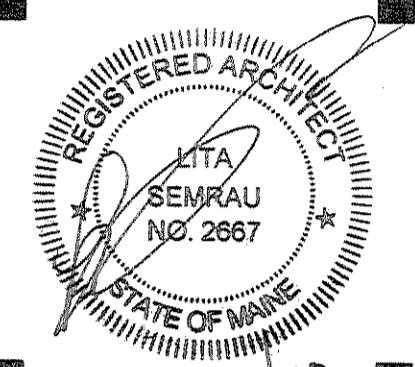


PORT CITY ARCHITECTURE

65 NEWBURY STREET  
PORTLAND, ME 04101  
207.761.9000  
fax: 207.761.2010  
lita@portcityarch.com



**ALIED COOK CONSTRUCTION**  
Managers • Builders  
Building Excellence Since 1958



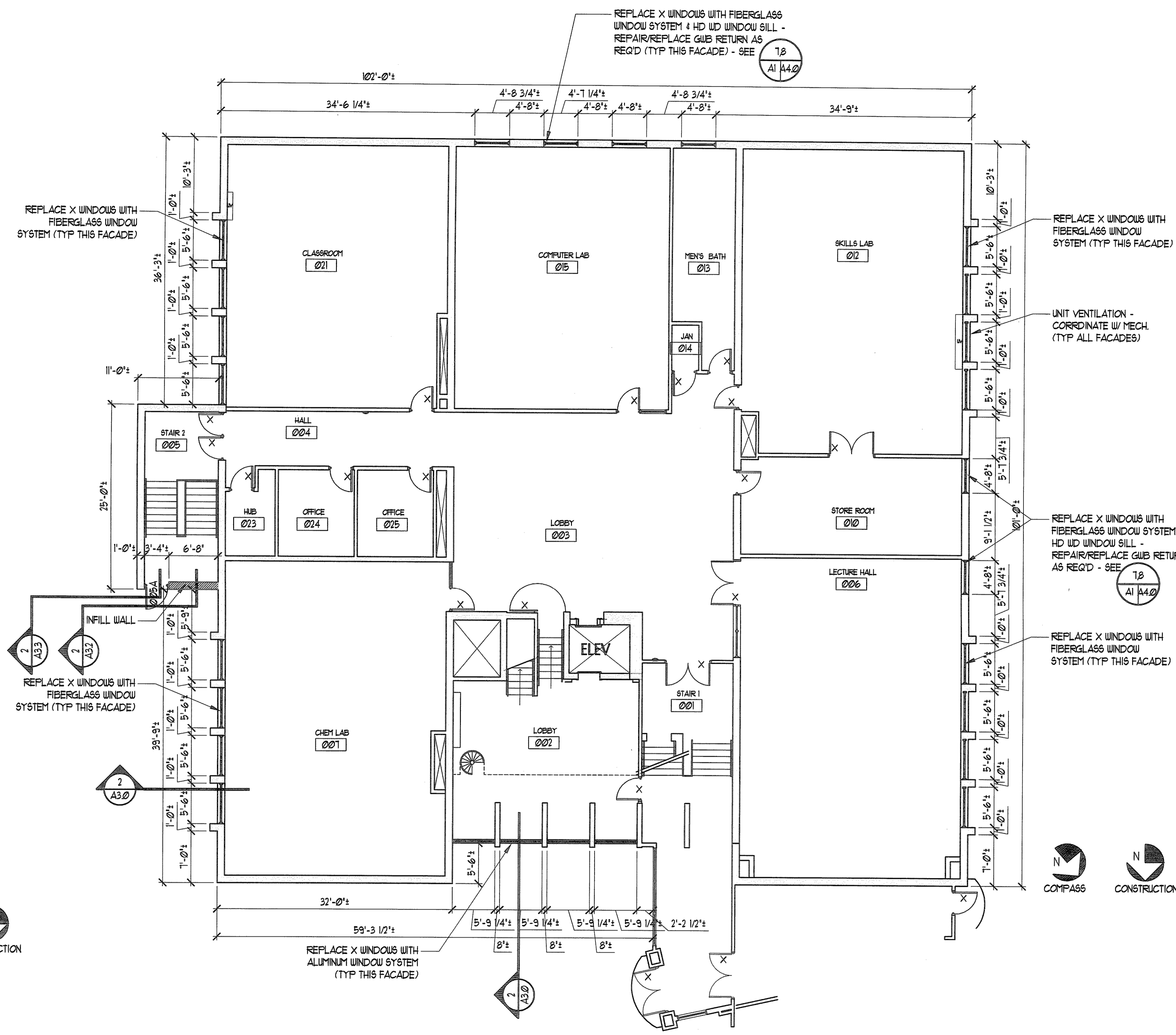
UNIVERSITY OF NEW ENGLAND  
Portland Campus  
**Blewett Hall Window Replacement**  
716 STEVENS AVENUE, PORTLAND, ME

#	DATE	DESCRIPTION
		BID SET
	04/16/10	Date Issued
	10503	Project Number

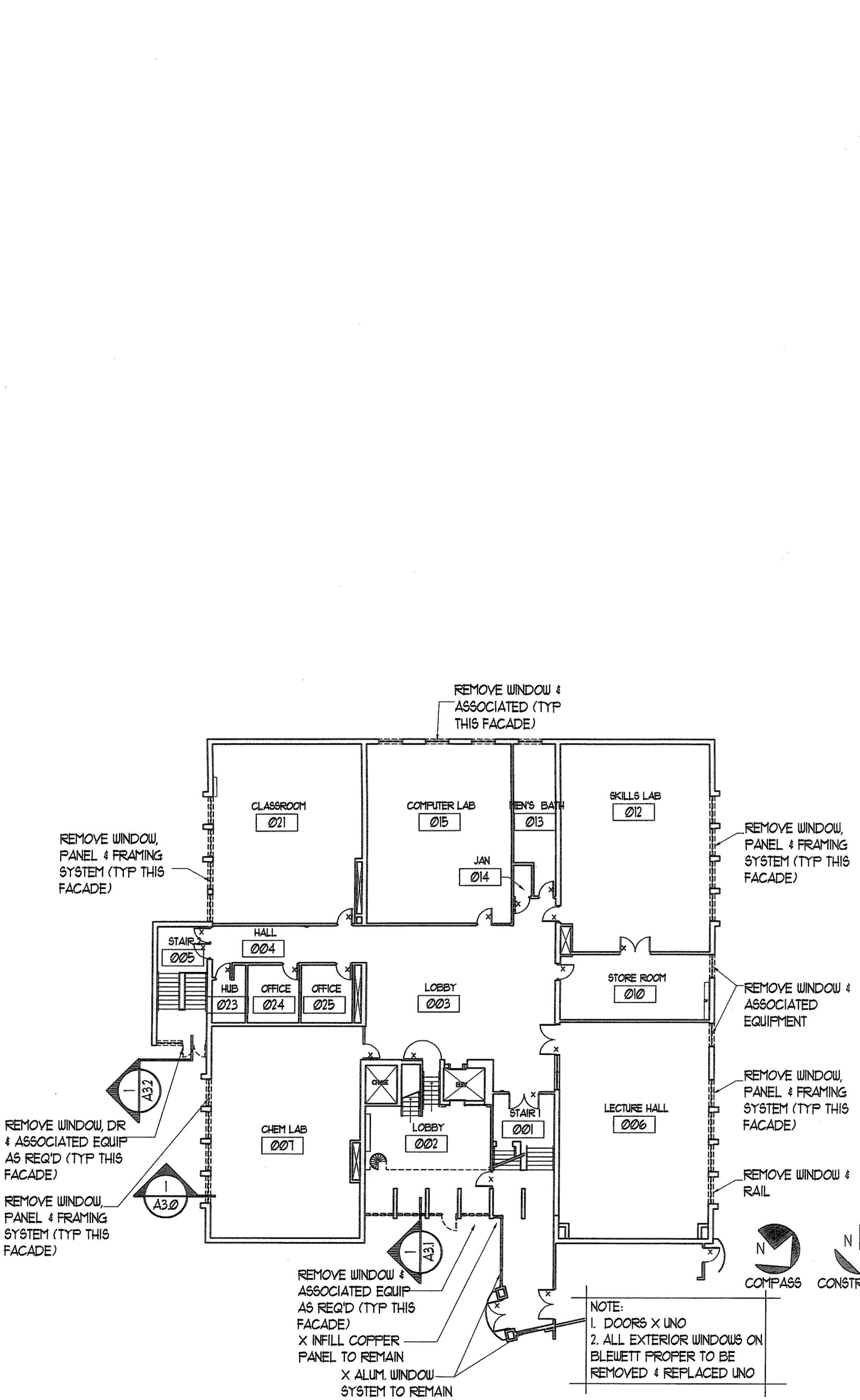
SHEET NAME  
**Lower Level Floor Plan**

Drawn By  
JP  
Checked By  
LAS  
**A1.0**

CONSTRUCTION SET



1 Lower Level Plan  
SCALE: 1/8" = 1'-0"



2 Lower Level Demo Plan  
SCALE: 1/16" = 1'-0"

IF THIS SHEET IS NOT 24 X 36 IT IS A REDUCED SCALE PRINT - SCALE ACCORDINGLY!

SCALE 1" = 1'

SCALE 3/4" = 1'

SCALE 1/2" = 1'

SCALE 1/4" = 1'

SCALE 1/8" = 1'

SCALE 1/16" = 1'

NOTE:  
1. DOORS X UNO  
2. ALL EXTERIOR WINDOWS ON BLEWETT PROPER TO BE REMOVED & REPLACED UNO