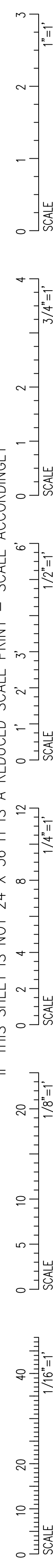


IF THIS SHEET IS NOT 24 X 36 IT IS A REDUCED SCALE PRINT - SCALE ACCORDINGLY



ELECTRICAL LEGEND:

- LIGHTING
2 1/4" FLUORESCENT LIGHT FIXTURE. 'A' DENOTES FIXTURE TYPE. 'T' DENOTES CIRCUIT NUMBER. 'w' DENOTES SWITCH CONTROLLERS.
2 1/2" FLUORESCENT LIGHT FIXTURE. 'A' DENOTES FIXTURE TYPE. SEE NOMENCLATURE ABOVE.
8" PENDANT INDIRECT LIGHT FIXTURE (LENGTHS MAY VARY) SEE NOMENCLATURE ABOVE.
RECESSED DOWNLIGHT (DIAMETER MAY VARY) HALF SHADED FIXTURES INDICATE FIXTURE TO BE FURNISHED WITH AN INTEGRAL EMERGENCY BALLAST.
SURFACE MOUNTED FLUORESCENT STRIP LIGHT FIXTURE (LENGTHS MAY VARY) SEE NOMENCLATURE ABOVE.
SURFACE MOUNTED FLUORESCENT, STAGGERED STRIP LIGHT FIXTURE (LENGTHS MAY VARY) SEE NOMENCLATURE ABOVE.
ROUND WALL BRACKET. SEE NOMENCLATURE ABOVE.
SQUARE WALL BRACKET. SEE NOMENCLATURE ABOVE.
WALL SCONCE SEE NOMENCLATURE ABOVE.
CEILING MOUNTED EXIT SIGN. ARROWS INDICATE DIRECTION TO EXIT. SHADING INDICATES (SIDE) TO HAVE 'EXIT' STENCIL. SEE NOMENCLATURE ABOVE.
WALL MOUNTED EXIT SIGN. SEE NOMENCLATURE ABOVE.
WALL MOUNTED COMBINATION EBU / EXIT SIGN. SEE NOMENCLATURE ABOVE.
WALL MOUNTED FLOOD LIGHT / REMOTE HEAD.
S1 SINGLE POLE SWITCH. 'Q' DENOTES SPECIFIC LAMPS TO BE CONTROLLED. MOUNTED 48" ABOVE FINISHED FLOOR.
S3 THREE WAY SWITCH. SEE NOMENCLATURE ABOVE. MOUNTED 48" ABOVE FINISHED FLOOR.
SD SINGLE POLE 1500W DIMMER. MOUNTED 48" ABOVE FINISHED FLOOR.
TC 7 DAY, ASTRONOMICAL DAY OMITTING, 24 HOUR TIMECLOCK WITH SKIP A DAY FEATURE. SIMILAR TO PARAGON 4 POLE EC7000 SERIES.
PC PHOTOCCELL.

LIGHTING CONTROL SYSTEM

- OC CEILING MOUNTED PASSIVE INFRARED / MICROPHONIC OCCUPANCY SENSOR. WATT STOPPER NO.: DT-355 OR EQUAL.
COC CEILING MOUNTED PASSIVE INFRARED / MICROPHONIC NARROW BEAM OCCUPANCY SENSOR. WATT STOPPER NO.: WT-225 OR EQUAL.
MI WALL MOUNTED PASSIVE INFRARED / MICROPHONIC OCCUPANCY SENSOR. WATT STOPPER NO.: WA-200 OR EQUAL.
MIob WALL MOUNTED DUAL-SWITCHABLE OCCUPANCY SENSOR. WATT STOPPER NO.: WA-300 OR EQUAL.
MIo WALL MOUNTED DIMMABLE OCCUPANCY SENSOR. WATT STOPPER NO.: WD-10 (120V), WD-10 (277V) OR EQUAL.

POWER

- PH DUPLX CONVENIENCE OUTLET, 20A 125V, 2 POLE, 3 WIRE, U SLOT GROUNDED TYPE. MOUNTED 18" ABOVE FINISHED FLOOR (TO CENTER LINE). 'T' INDICATES CIRCUIT NUMBER. 'G' INDICATES ISOLATED GROUND.
PH DUPLX CONVENIENCE OUTLET, 20A 125V, 2 POLE, 3 WIRE, U SLOT GROUNDED TYPE. ONE-HALF SWITCHED. MOUNTED 18" ABOVE FINISHED FLOOR (TO CENTER LINE). SEE NOMENCLATURE ABOVE.
PH DUPLX CONVENIENCE OUTLET, 20A 125V, 2 POLE, 3 WIRE, U SLOT GROUNDED TYPE. MOUNTED 48" ABOVE FINISHED FLOOR (TO CENTER LINE). SEE NOMENCLATURE ABOVE.
PH DOUBLE DUPLX OUTLET, MOUNTED 18" ABOVE FINISHED FLOOR. SEE NOMENCLATURE ABOVE.
PH DOUBLE DUPLX OUTLET, MOUNTED 48" ABOVE FINISHED FLOOR. SEE NOMENCLATURE ABOVE.
WP 'GF' TYPE DUPLX CONVENIENCE OUTLET, MOUNTED 18" ABOVE FINISHED FLOOR. 'WP' - DENOTES TO BE PROVIDED WITH A WEATHER-PROOF ENCLOSURE. SEE NOMENCLATURE ABOVE.
PH 'GF' TYPE DUPLX CONVENIENCE OUTLET, MOUNTED 48" ABOVE FINISHED FLOOR. SEE NOMENCLATURE ABOVE.
PH 'GF' TYPE DUPLX CONVENIENCE OUTLET, ONE HALF SWITCHED MOUNTED 48" ABOVE FINISHED FLOOR. SEE NOMENCLATURE ABOVE.
PH DUPLX CONVENIENCE OUTLET, RECESSED IN FLOOR. SEE NOMENCLATURE ABOVE.
PH SPECIAL PURPOSE OUTLET. RATING AS INDICATED ON DRAWING. '20A' DENOTES AMPERAGE. EXACT MOUNTING HEIGHT SHALL BE VERIFIED IN FIELD.
PH THERMAL SWITCH, HORSEPOWER RATED.
PH NON-FUSED DISCONNECT SWITCH. SIZE AND RATING AS INDICATED ON DRAWINGS.
PH FUSED DISCONNECT SWITCH. SIZE AND RATING AS INDICATED ON DRAWINGS.
PH COMBINATION MOTOR STARTER / FUSED DISCONNECT SWITCH. SIZE AND RATING AS INDICATED ON DRAWINGS.
PH MOTOR STARTER. SIZE AND RATING AS INDICATED ON DRAWINGS.
PH MUSH-ROOM BUTTON / MOMENTARY SWITCH.
PH TWO BUTTON SWITCH.
PH THREE BUTTON SWITCH.
PH FOUR BUTTON SWITCH.
PH FAN / MOTOR. 'Z' DENOTES HORSEPOWER / WATTAGE.
PH COMBINATION FAN LIGHT.
PH EXHAUST FAN.

POWER (CONT.)

- RECESSED PANELBOARD. 'LP' - DENOTES PANEL DESIGNATION. 'LP' - DENOTES PANEL DESIGNATION.
SURFACE MOUNTED PANELBOARD. 'LP' - DENOTES PANEL DESIGNATION.
POWER POLE.
RANGE HOOD.
JUNCTION BOX WITH TYPE 'SO' POWER CORD DROP AND DUPLX RECEPTACLE.
JUNCTION BOX WITH TYPE 'SO' POWER CORD DROP AND QUADRAPLEX RECEPTACLE.
JUNCTION BOX WITH TYPE 'SO' POWER CORD DROP AND SPECIAL PURPOSE RECEPTACLE. RATED AS INDICATED ON DRAWINGS.
JUNCTION BOX WITH TYPE 'SO' POWER CORD DROP AND HARD WIRED CONNECTION.
4" CIRCULAR JUNCTION BOX.
VOLT METER.
AMP METER.
VOLT METER SWITCH.
AMP METER SWITCH.
RELAY.
CONTROLLER.
TRANSFORMER RATING AS INDICATED ON DRAWINGS. DIMENSIONS VARY.
METER.

DATA/ COMMUNICATION/ SECURITY

- TELEPHONE OUTLET MOUNTED 18" ABOVE FINISHED FLOOR. ELECTRICAL CONTRACTOR SHALL FURNISH AND INSTALL A FLUSH MOUNTED, SINGLE PORT, MODULAR RJ11 TELEPHONE JACK WITH 1/4" C #24 AWG, CATEGORY 3, TELEPHONE CABLE FROM EACH OUTLET INDICATED ON THE PLANS TO THE TEL/DATA ROOM. 'W' - DENOTES PHONE MOUNTED 48" ABOVE FINISHED FLOOR.
DATA OUTLET MOUNTED 18" ABOVE FINISHED FLOOR. ELECTRICAL CONTRACTOR SHALL FURNISH AND INSTALL A FLUSH MOUNTED, SINGLE PORT, MODULAR RJ45 DATA JACK WITH 1/8" C #24 AWG, CATEGORY 6, DATA CABLE FROM EACH OUTLET INDICATED ON THE PLANS TO THE TEL/DATA ROOM.
TEL/DATA OUTLET MOUNTED 18" ABOVE FINISHED FLOOR. ELECTRICAL CONTRACTOR SHALL FURNISH AND INSTALL 2 FLUSH MOUNTED MODULAR RJ45 DATA JACKS WITH 2-8/C #24 AWG, CATEGORY 6, DATA CABLES FROM EACH OUTLET INDICATED ON THE PLANS TO THE TEL/DATA ROOM.
DATA OUTLET RECESSED IN FLOOR. SEE NOMENCLATURE ABOVE.
TELEPHONE OUTLET RECESSED IN FLOOR. SEE NOMENCLATURE ABOVE.
TEL/DATA OUTLET RECESSED IN FLOOR. SEE NOMENCLATURE ABOVE.
CABLE TV OUTLET, MOUNT 18" AFF. ELECTRICAL CONTRACTOR SHALL FURNISH AND INSTALL AN OUTLET BOX, FACEPLATE W/ 'P' CONNECTOR AND A SINGLE COAXIAL CABLE FROM EACH OUTLET TO THE TEL/DATA ROOM. ELECTRICAL CONTRACTOR SHALL COORDINATE WITH THE LOCAL CABLE COMPANY FOR EXACT CABLE TYPE.
SECURITY SYSTEM CARD READER / SWIPE.

ONE-LINE

- CIRCUIT BREAKER. TOP VALUE DENOTES BREAKER RATING. BOTTOM VALUE DENOTES NUMBER OF POLES.
FUSE.
SINGLE POLE SWITCH.
PUSH BUTTON.
FUSE AND SWITCH.
GROUND FAULT SENSOR.
COIL.
SHUNT TRIP COIL.
POTENTIAL TRANSFORMER.
CURRENT TRANSFORMER.
TRANSFORMER.
AUTOMATIC TRANSFER SWITCH (ATS).
BATTERY.
GROUND CONDUCTOR.
TRANSIENT VOLTAGE SURGE SUPPRESSOR.
GENERATOR RATING AS INDICATED ON DRAWINGS.

WIRING

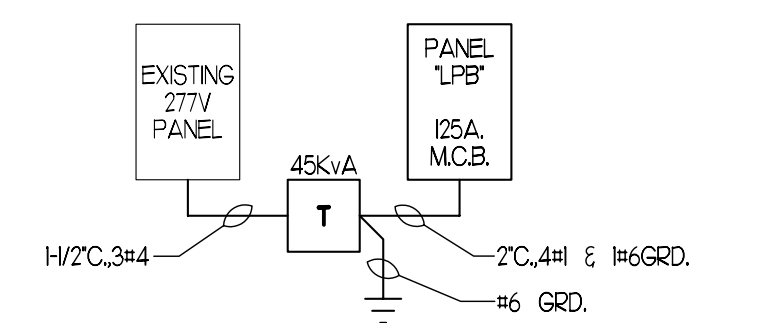
- HOMERUN - CABLE. 'LP' - DENOTES PANELBOARD. 'L3' - DENOTES CIRCUITS. 'TICKS' INDICATE NUMBER OF CONDUCTORS IN THE RUN.
HOMERUN - PIPE. 'LP' - DENOTES PANELBOARD. 'L3' - DENOTES CIRCUITS. 'TICKS' INDICATE NUMBER OF CONDUCTORS IN THE RUN.
LOAD CENTER DESIGNATION 'T' INDICATES WIRE & BREAKER SIZE/ RATING (SEE TYPICAL HOME RUN SCHEDULE).
CONDUIT TURNING UP.
CONDUIT TURNING DOWN.
CONDUIT STUB.
WIRE BREAK.
NORMAL POWER WIRING.
EMERGENCY POWER WIRING.
TEL/DATA WIRING.
LOW VOLTAGE CONTROL WIRING.
ISOLATED GROUND WIRING. 'TICK SETS (I SHORT & I LONG)' INDICATE NUMBER OF CONDUCTORS IN THE RUN.

ABBREVIATIONS & NOTATION

- MECHANICAL EQUIPMENT DESIGNATION. CONTENTS DESCRIBE MACHINERY (BY MECHANICAL ENGINEER).
REVISION TAG. 'T' - DENOTES REVISION NUMBER.
AFF. ABOVE FINISHED FLOOR.
AF.G. ABOVE FINISHED GRADE.
E.C. ELECTRICAL CONTRACTOR.
EX. EXISTING TO REMAIN.
ER. EXISTING TO BE RELOCATED.
ETR. EXISTING TO BE REMOVED.
EXP. EXPLOSION PROOF.
G.C. GENERAL CONTRACTOR.
WP. WEATHER-PROOF.

GENERAL NOTES

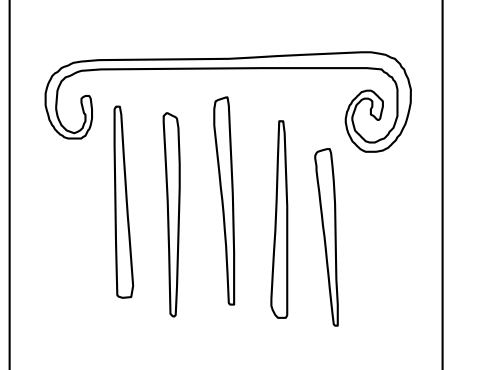
- PERFORM ALL WORK IN ACCORDANCE WITH NATIONAL AND STATE ELECTRICAL CODES, LOCAL ORDINANCES, AND REQUIREMENTS OF THE WIRING INSPECTOR.
MATERIALS.
a. ALL WIRING SHALL BE COPPER. 90 AMPS OR LESS SHALL BE 60° CELSIUS. 100 AMPS OR MORE SHALL BE 75° CELSIUS. GENERAL BRANCH WIRING SHALL BE TYPE 'MC' CABLE FOR GENERAL INTERIOR WIRING AND BMT FOR ANY EXPOSED BRANCH CIRCUIT WIRING.
b. ALL PRODUCTS AND DEVICES SHALL BE NEW AND BEAR THE UNDERWRITERS' LABORATORIES LABEL. DEVICES SHALL BE SPECIFICATION GRADE. COLOR OF DEVICES SHALL BE COORDINATED WITH THE ARCHITECT.
PERFORM ALL WORK IN A WORKMANLIKE AND TIMELY MANNER SUBJECT TO THE APPROVAL OF THE ARCHITECT.
ELECTRICAL CONTRACTOR SHALL BE RESPONSIBLE FOR ALL INSURANCE, PERMITS, FEES AND BACKCHARGES REQUIRED FOR THE PERFORMANCE OF HIS/HER WORK.
ELECTRICAL CONTRACTOR SHALL COORDINATE THE ELECTRICAL WORK WITH ALL OTHER TRADES. ANY CONFLICT SHALL BE PRESENTED TO THE GENERAL CONTRACTOR AND ARCHITECT PRIOR TO INSTALLATION OF WORK.
PANEL DIRECTORIES SHALL REFLECT THE WORK PERFORMED UNDER THIS CONTRACT. PANELS SHALL BE PROVIDED WITH TYPED DIRECTORIES.
ALL PRODUCTS SHALL BE GUARANTEED FOR ONE YEAR AFTER ACCEPTANCE BY OWNER.
ALL WIRING AND EQUIPMENT ARE DEPICTED DIAGRAMMATICALLY. FINAL LOCATIONS SHALL BE DETERMINED IN THE FIELD AND ANY CONFLICTS SHALL BE BROUGHT TO THE ATTENTION OF THE ARCHITECT.
ELECTRICAL CONTRACTOR SHALL BE RESPONSIBLE FOR PROVIDING TEMPORARY POWER AND LIGHTING. SPECIAL PURPOSE POWER REQUIREMENTS SHALL BE PAID FOR BY THE TRADE REQUIRING SAME (WELDERS, COMPRESSORS, ETC.)
SHOP DRAWINGS SHALL BE SUBMITTED ON ALL ELECTRICAL EQUIPMENT, BEFORE PROCUREMENT OF EQUIPMENT.
ALL NEW WIRING INDICATED ON PLANS SHALL MATCH THE AMPACITY OF THE CIRCUIT BREAKER INDICATED AT THE HOMERUN. WHERE NO BREAKER SIZE IS INDICATED, THE BREAKER SHALL BE 20A/P WITH #12 AWG CABLE.
WIRE AND CONDUIT SIZES INDICATED ON HOMERUNS SHALL RUN CONTINUOUS THROUGHOUT CIRCUIT.
CONDUITS AND CIRCUITRY INDICATED ON THE DRAWINGS ARE DIAGRAMMATIC ONLY. FINAL LOCATION OF CONDUITS SHALL BE FIELD COORDINATED SO AS TO AVOID CONFLICTS WITH OTHER TRADES.
ALL 120 VOLT BRANCH CIRCUITS WHEN 100 LINEAR FEET OR MORE FROM LAST OUTLET OR FIXTURE IN CIRCUIT TO RESPECTIVE PANELBOARDS SHALL BE A MINIMUM OF #10 AWG COPPER WIRE(S).
COORDINATE EXACT LOCATION OF MECHANICAL EQUIPMENT WITH H.V.A.C., PLUMBING AND FIRE PROTECTION CONTRACTORS.
THE ELECTRICAL CONTRACTOR SHALL FURNISH AND INSTALL ALL LIGHTING FIXTURES COMPLETE WITH MOUNTING ACCESSORIES TO MEET PROJECT CONDITIONS.
THE ELECTRICAL CONTRACTOR SHALL VERIFY FIXTURE MOUNTING AND EXACT LOCATIONS AGAINST ARCHITECTS REFLECTED CEILING PLANS, ELEVATIONS AND DETAIL DRAWINGS.
ALL FIXTURES SHALL BE SUPPORTED FROM THE BUILDING STRUCTURE, INDEPENDENT OF HUNG CEILING.
ALL WIRING IN CLASSIFIED AREAS SHALL COMPLY WITH ARTICLE 513 OF THE NATIONAL ELECTRIC CODE.
WIRING THAT PENETRATES FLOOR SLABS SHALL BE IN RIGID STEEL CONDUIT AND SEALED WITH THE APPROPRIATE SEAL FITTINGS. ALL SEALING SHALL BE DONE IN ACCORDANCE WITH ARTICLE 504.5 OF THE NATIONAL ELECTRIC CODE.



PARTIAL POWER ONE-LINE SCALE: NOT TO SCALE

LIGHTING FIXTURE SCHEDULE
ALL FLUORESCENT BALLASTS SHALL BE OF THE ELECTRONIC, UNIVERSAL TYPE, MANUFACTURED BY ADVANCE OR EQUAL.
Table with columns: DESIG, MANUFACTURER, CATALOG NUMBER, MTG, VOLT, LAMP QTY, LAMP DESCRIPTION, REMARKS.
Rows include fixtures A through XI with details like LITHONIA, PEERLESS, COLUMBIA, INDESSA, and Sylvania.

MOUNTING KEY:
P - PENDANT MOUNTED
R - RECESSED MOUNTED
S - SURFACE MOUNTED
U - UNIVERSAL MOUNTED
W - WALL MOUNTED
NOTE: ALL LAMPS TO BE MANUFACTURED BY GENERAL ELECTRIC, PHILLIPS OR SYLVANIA.



PORT CITY ARCHITECTURE

65 NEWBURY STREET
PORTLAND, ME 04101
207.761.9000
fax: 207.761.2010
lita@portcityarch.com



VINCENT A. DIORIO, INC.
CONSULTING ENGINEERS
76 STEVENS AVENUE, PORTLAND, ME

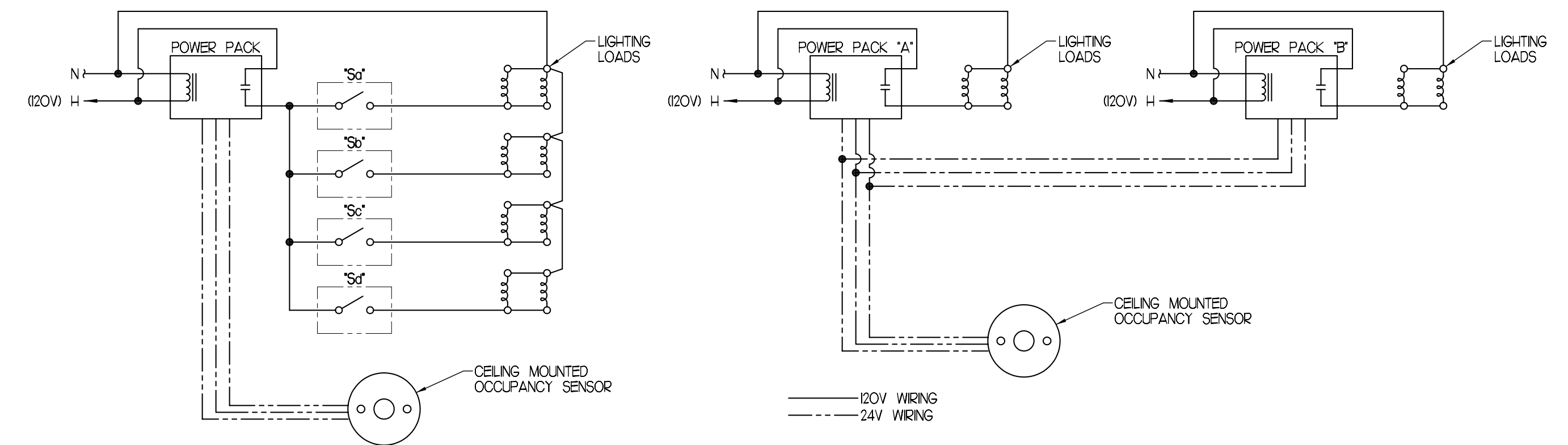
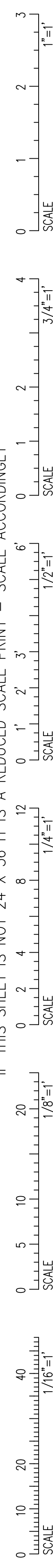
Table with columns: #, DATE, DESCRIPTION. Contains a row for 'Date Issued 3/11/09'.

Date Issued 3/11/09
Project Number 06506

SHEET NAME
ELECTRICAL LEGEND AND NOTES

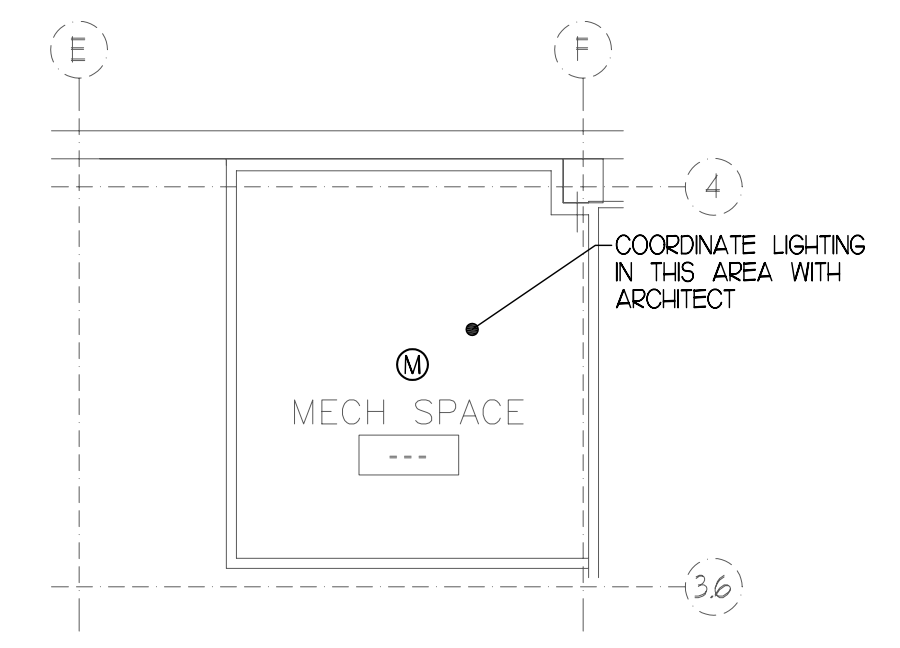
Drawn By CDO
Checked By VAD
E01

IF THIS SHEET IS NOT 24 X 36 IT IS A REDUCED SCALE PRINT - SCALE ACCORDINGLY

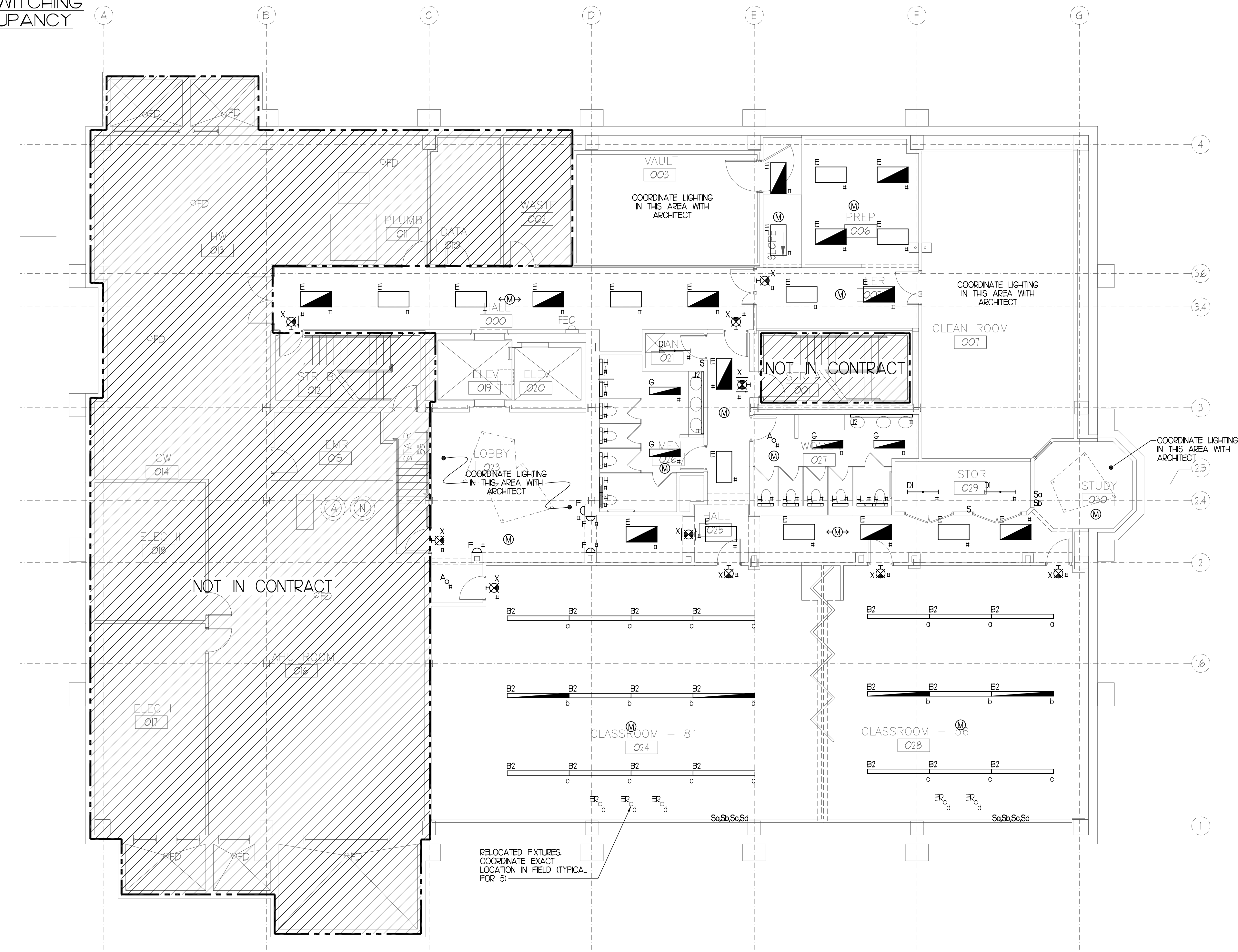


CLASSROOM OCCUPANCY SENSOR W/ 120V. TOGGLE SWITCHES
SCALE: NOT TO SCALE

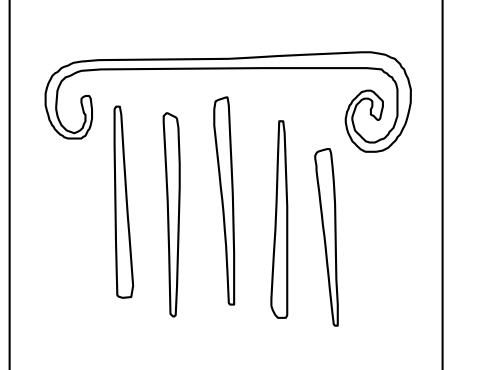
DUAL CIRCUIT SWITCHING W/ SINGLE OCCUPANCY SENSOR
SCALE: NOT TO SCALE



MECHANICAL SPACE LIGHTING PLAN
SCALE: 1/8\"/>

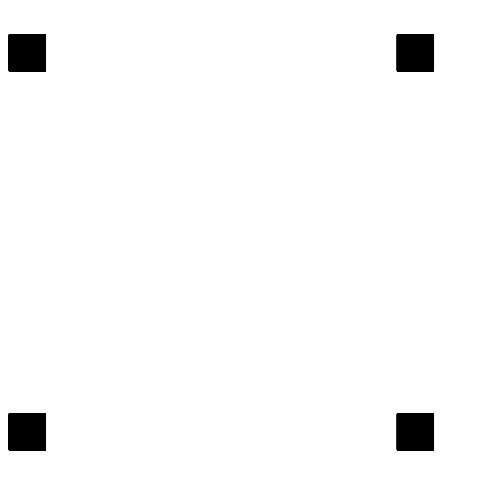


LOWER LEVEL LIGHTING PLAN
SCALE: 1/8\"/>



PORT CITY ARCHITECTURE

65 NEWBURY STREET
PORTLAND, ME 04101
207.761.9000
fax: 207.761.2010
lita@portcityarch.com



VINCENT A. DIORIO, INC.
CONSULTING ENGINEERS
100 Newbury Street, Suite 1000
Portland, Maine 04102
Tel: (781) 252-9724 Fax: (781) 252-9725 Email: vad@vadioring.com

**UNIVERSITY OF NEW ENGLAND
COLLEGE OF
PHARMACY
CLASSROOMS**

716 STEVENS AVENUE, PORTLAND, ME

#	DATE	DESCRIPTION

Date Issued 3/11/09
Project Number 06506

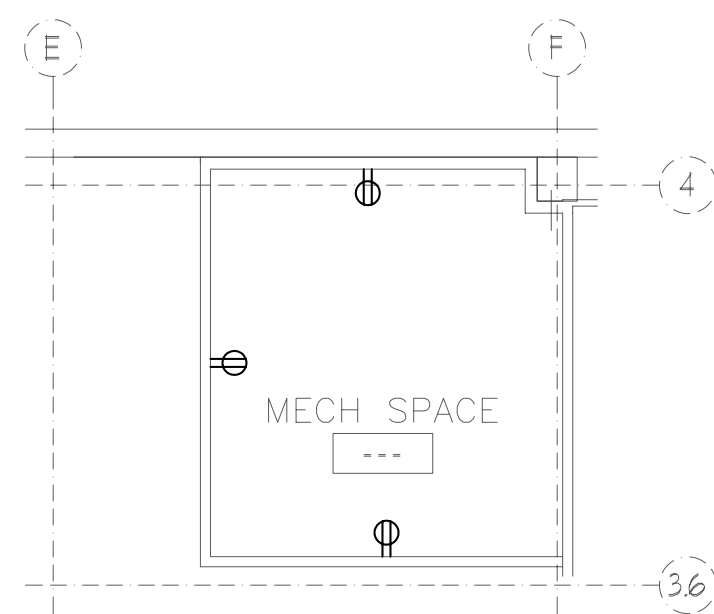
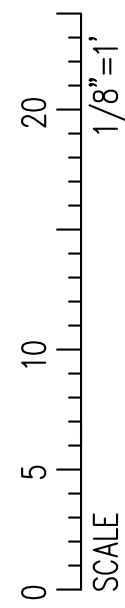
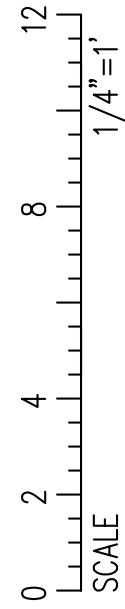
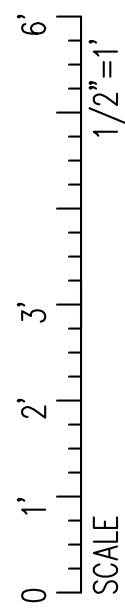
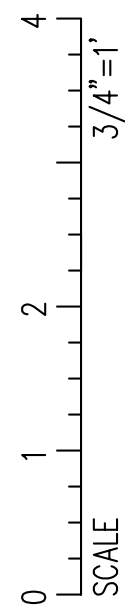
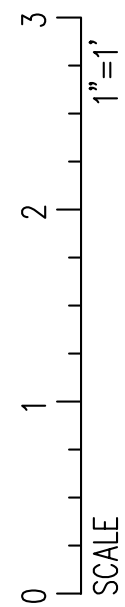
SHEET NAME
**ELECTRICAL
LOWER FLOOR
LIGHTING PLAN**

Drawn By
CDO
Checked By
VAD

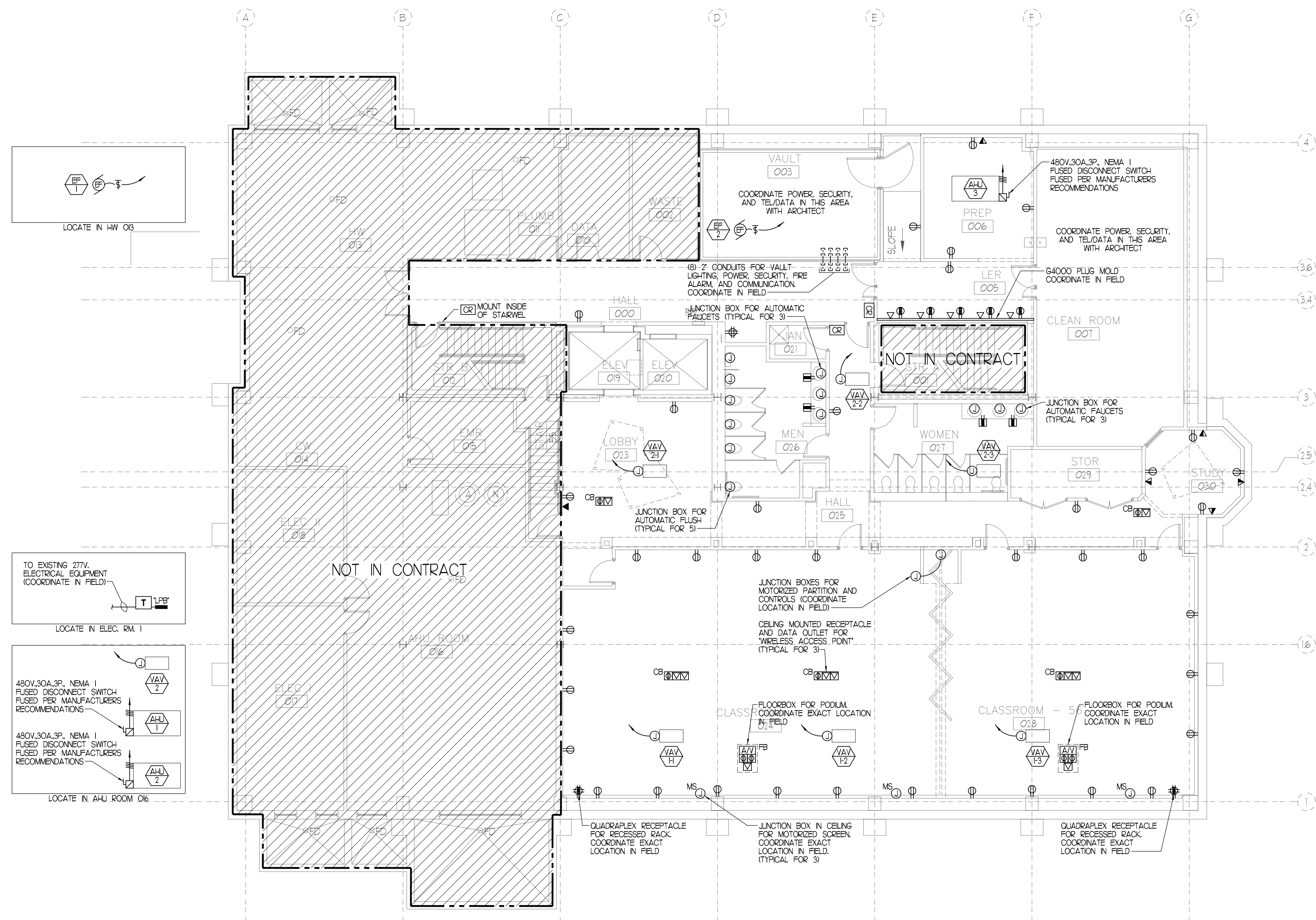
E02

BID DOCUMENTS - NOT FOR CONSTRUCTION

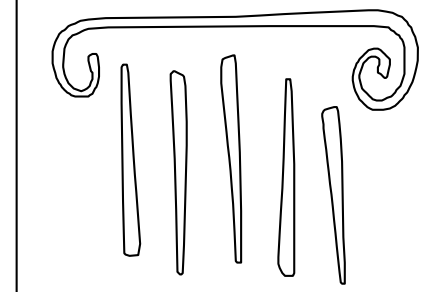
IF THIS SHEET IS NOT 24 X 36 IT IS A REDUCED SCALE PRINT - SCALE ACCORDINGLY



MECHANICAL SPACE POWER PLAN
SCALE: 1/8" = 1'-0"



LOWER LEVEL POWER PLAN
SCALE: 1/8" = 1'-0"



PORT CITY ARCHITECTURE

65 NEWBURY STREET
PORTLAND, ME 04101
207.761.9000
fax: 207.761.2010
lita@portcityarch.com



VINCENT A. DIORIO, INC.
CONSULTING ENGINEERS
100 Newell Street, Suite 200
Newport, Massachusetts 02882
tel: (978) 253-9724 fax: (978) 253-9725 email: vad@vadioring.com

UNIVERSITY OF NEW ENGLAND
COLLEGE OF
PHARMACY
CLASSROOMS

716 STEVENS AVENUE, PORTLAND, ME

#	DATE	DESCRIPTION
---	------	-------------

Date Issued	3/11/09
-------------	---------

Project Number	06506
----------------	-------

SHEET NAME
ELECTRICAL
LOWER FLOOR
POWER PLAN

Drawn By

CDO

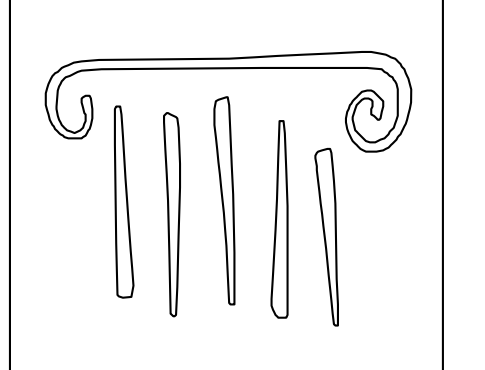
Checked By

VAD

E03

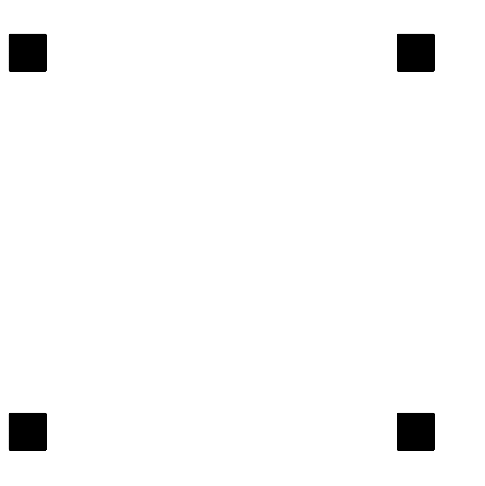
BID DOCUMENTS - NOT FOR CONSTRUCTION

COPYRIGHT: Reuse or reproduction of the contents of this document is not permitted without written permission of PORT CITY ARCHITECTURE PA



PORT CITY ARCHITECTURE

65 NEWBURY STREET
PORTLAND, ME 04101
207.761.9000
fax: 207.761.2010
lita@portcityarch.com



UNIVERSITY OF NEW ENGLAND
COLLEGE OF
PHARMACY
CLASSROOMS

716 STEVENS AVENUE, PORTLAND, ME

DATE DESCRIPTION

Date Issued 3/11/09
Project Number 06506

SHEET NAME
FIRE ALARM
LOWER FLOOR
PLAN

Drawn By
CDO
Checked By
VAD

FA01

BID DOCUMENTS - NOT FOR CONSTRUCTION

COPYRIGHT: Reuse or reproduction of the contents of this document is not permitted without written permission of PORT CITY ARCHITECTURE PA

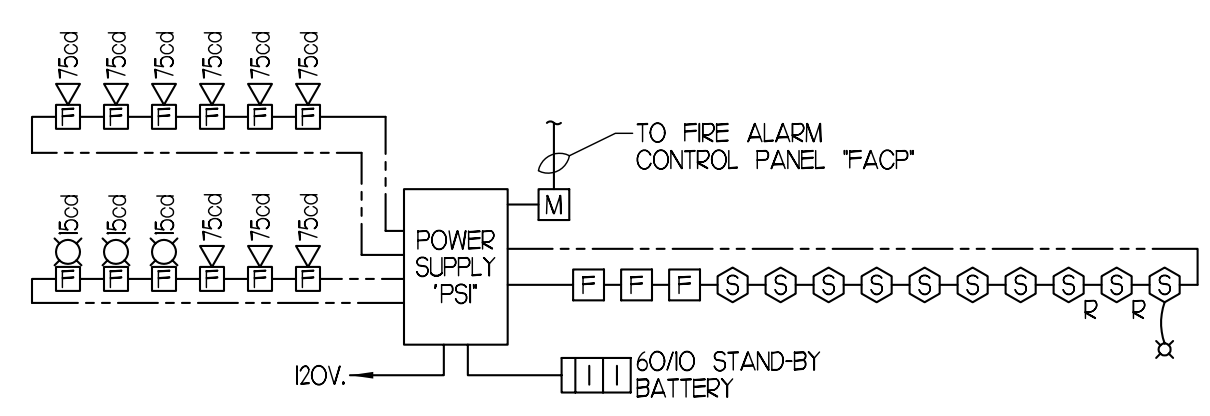
FIRE ALARM NOTES:

- 1. ELECTRICAL CONTRACTOR SHALL FURNISH AND INSTALL A COMPLETE ANALOG/ ADDRESSABLE MICRO-PROCESSOR BASED, FIRE ALARM SYSTEM AS INDICATED AND AS SPECIFIED. ALL FIRE ALARM CIRCUIT WIRING SHALL BE POWER LIMITED FIRE ALARM CABLE. AUDIOVISUAL CIRCUITS SHALL BE #14 POWER LIMITED FIRE ALARM CABLE, AS MENTIONED ABOVE. CIRCUITS SHALL BE ARRANGED CLASS 'A'.
2. ELECTRICAL CONTRACTOR SHALL UTILIZE ALARM VERIFICATION AS A STANDARD FEATURE FOR ALL ADDRESSABLE SMOKE DETECTORS.
3. THE CONTRACTOR, BEFORE INSTALLATION OR PROCUREMENT OF EQUIPMENT, SHALL SUBMIT A SHOP DRAWING OF ALL THE DEVICES BEING SUPPLIED FOR THIS PROJECT. THE SHOP DRAWINGS PROVIDING A DIAGRAM INDICATING HOW THE SYSTEM WILL OPERATE IS REQUIRED AS A PART OF THE SUBMITTAL PACKAGE.
4. ALL PULL AND JUNCTION BOXES AS WELL AS 6" OF ANY CONDUIT ENTERING OR LEAVING ANY PULL OR JUNCTION BOX SHALL BE PAINTED RED.
5. FIRE ALARM SYSTEM SHALL BE MANUFACTURED BY GAMEWELL OR EQUAL.
6. E.C. TO PROVIDE CONDUIT AND CABLE AS REQUIRED BY ELEVATOR INSTALLER TO FACILITATE ELEVATOR RECALL UPON ACTIVATION OF FIRE ALARM SYSTEM.
7. UPON ACTIVATION OF AIR HANDLING UNIT DUCT SMOKE DETECTOR THE RESPECTIVE UNIT AND ASSOCIATED SMOKE AND FIRE DAMPERS SHALL BE DE-ACTIVATED.
8. UPON ACTIVATION OF ANY OF THE ELEVATOR LOBBY SMOKE DETECTORS OR ELEVATOR CONTROL MODULES, THE ELEVATORS SHALL DROP TO THE MAIN FLOOR. IF THE MAIN FLOOR IS IN AN ALARM CONDITION THE ELEVATOR SHALL SEEK AN ALTERNATE FLOOR NOT IN ALARM. THE ELEVATORS SHALL BE PROGRAMMED TO SEARCH FOR A FLOOR NOT IN ALARM.
9. UPON ACTIVATION OF THE FIRE ALARM SYSTEM ALL THE MAGNETIC DOOR HOLDERS SHALL BE DE-ENERGIZED TO ALLOW DOORS TO SWING CLOSED.
10. ELECTRICAL CONTRACTOR SHALL BE RESPONSIBLE FOR A SET OF AS-BUILT DRAWINGS OF THE FIRE ALARM SYSTEM AS-BUILT. DRAWINGS SHALL INDICATE THE LOCATION OF THE CONTROL PANEL. ALL FIRE ALARM DEVICES AND WIRING INSTALLED AS-BUILT DRAWINGS SHALL BE TURNED OVER TO THE OWNER'S PROJECT REPRESENTATIVE.
11. ELECTRICAL CONTRACTOR SHALL BE RESPONSIBLE FOR CONNECTING THE FIRE ALARM SYSTEM MASTERBOX TO THE CAMPUS LOOP USING ISMA 19-6, 2 PAIR #6 SOLID CONDUCTORS FOR UNDERGROUND SERVICE OR ISMA 20-4, 2PAIR #6 SOLID CONDUCTORS FOR AERIAL SERVICE.
12. THE ELECTRICAL CONTRACTOR SHALL BE RESPONSIBLE FOR PROVIDING AN ANNUNCIATOR THAT INDICATES ALL ADDRESSABLE DEVICES TO BE INSTALLED AT THE MAIN ENTRANCE.
13. THE FIRE ALARM SYSTEM SHALL BE IN ACCORDANCE WITH NFPA 72. ANY CHANGES TO THE SYSTEM DESIGN SHALL BE PRE-APPROVED BY THE LOCAL FIRE DEPARTMENT AND VINCENT A. DIORIO INC.
14. FIRE ALARM RISER DIAGRAM IS ONLY DIAGRAMMATIC. REFER TO FIRE ALARM PLANS FOR EXACT NUMBER OF DEVICES.
15. ALL AUDIOVISUAL DEVICES SHALL BE SYNCHRONIZED CODE 3. TEMPORAL PATTERN.

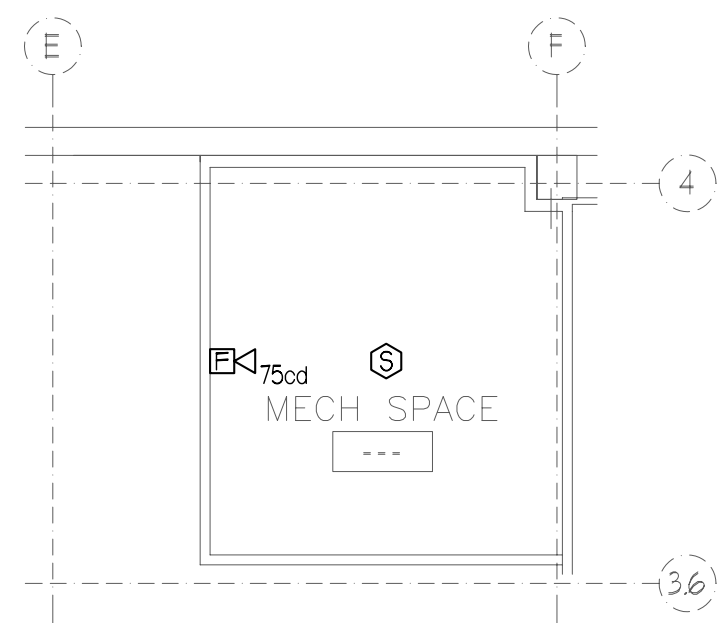
FIRE ALARM LEGEND

- 75cod FIRE ALARM SYSTEM ADA TYPE 75db/75cod HORN/ STROBE UNIT WALL MOUNTED 90" ABOVE FINISHED FLOOR OR 6" BELOW FINISHED CEILING WHICHEVER IS LOWER
15cod FIRE ALARM SYSTEM ADA TYPE 15cod STROBE ONLY UNIT, WALL MOUNTED 90" ABOVE FINISHED FLOOR OR 6" BELOW FINISHED CEILING WHICHEVER IS LOWER
F MANUAL PULL STATION, MOUNTED 48" ABOVE FINISHED FLOOR
S CEILING MOUNTED PHOTOELECTRIC, SYSTEM TYPE SMOKE DETECTOR.
SR CEILING MOUNTED PHOTOELECTRIC, SYSTEM TYPE SMOKE DETECTOR, FOR ELEVATOR RECALL. ELEVATOR SHALL PERFORM RECALL UPON INITIATION OF RESPECTIVE DEVICE
H AUTOMATIC HEAT DETECTOR 135 DEGREES FIXED TEMPERATURE WITH ZONE ADDRESSABLE MODULE
FACFP FIRE ALARM SYSTEM MASTER BOX
FACP FIRE ALARM CONTROL PANEL
FAA FIRE ALARM ANNUNCIATOR
DH FIRE ALARM WEATHERPROOF BEACON
DH FIRE ALARM SYSTEM DOOR HOLDER
FS FIRE ALARM SYSTEM FLOW SWITCH, FURNISHED BY THE SPRINKLER CONTRACTOR, WIRED BY ELECTRICAL CONTRACTOR
TS FIRE ALARM SYSTEM TAMPER SWITCH ON VALVE, FURNISHED BY SPRINKLER CONTRACTOR, WIRED BY ELECTRICAL CONTRACTOR
PS FIRE ALARM SYSTEM PRESSURE SWITCH ON VALVE, FURNISHED BY SPRINKLER CONTRACTOR, WIRED BY ELECTRICAL CONTRACTOR
R REMOTE INDICATOR
RTS REMOTE INDICATOR WITH TEST STATION
AM ADDRESSABLE MONITOR MODULE
CM ADDRESSABLE CONTROL MODULE
K KNOX BOX
60 HOUR BATTERY
AUXILIARY POWER SUPPLY 6 AMPS / 24 VOLTS WITH 4 NOTIFICATIONS CIRCUITS, NOTIFIER CAT. NO. FCP5-2456 WITH BATTERY BACK-UP AND INTEGRAL CHARGER

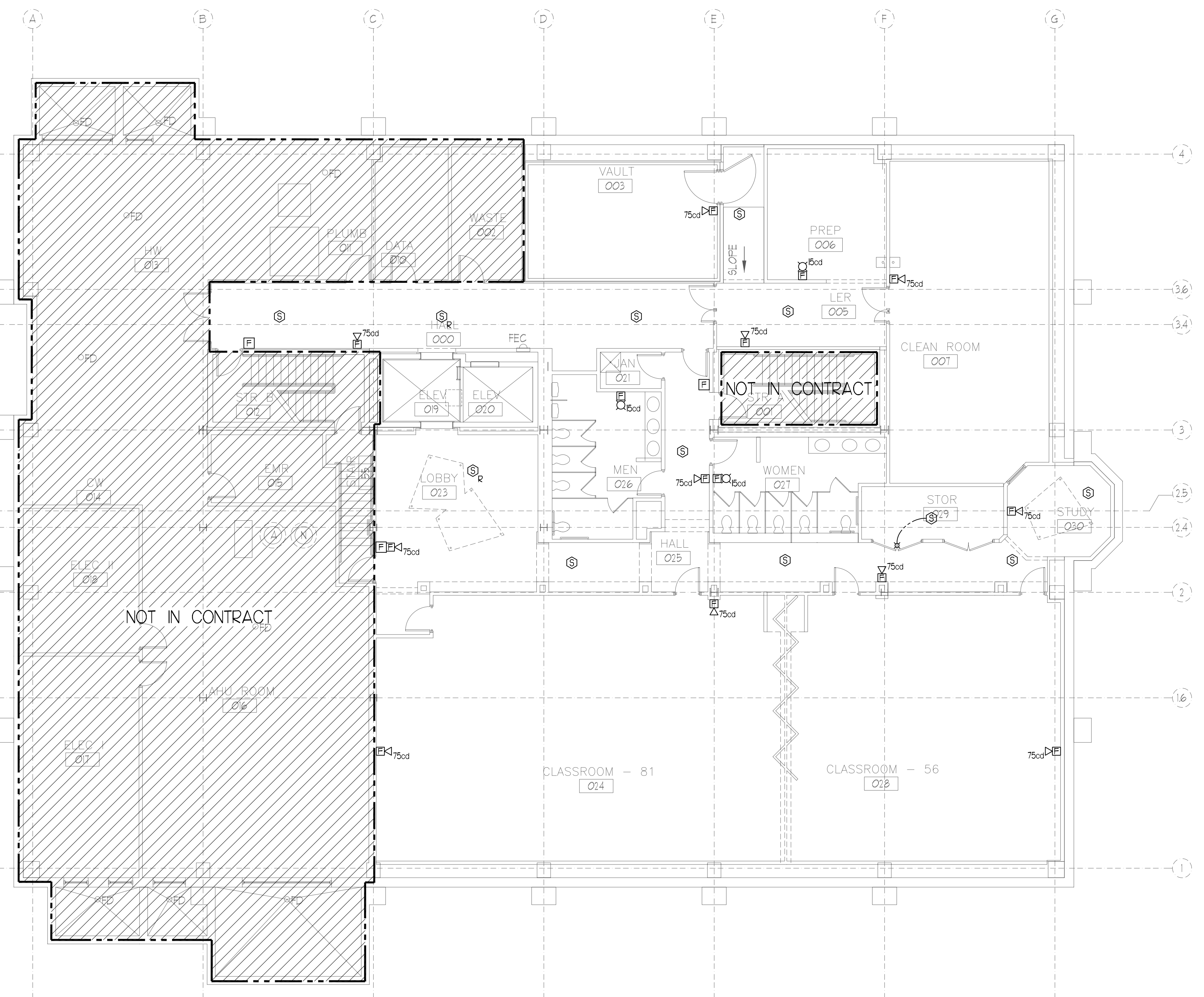
IF THIS SHEET IS NOT 24 X 36 IT IS A REDUCED SCALE PRINT - SCALE ACCORDINGLY



PARTIAL FIRE ALARM ONE-LINE SCALE: NOT TO SCALE



MECHANICAL SPACE FIRE ALARM PLAN SCALE: 1/8" = 1'-0"



LOWER LEVEL FIRE ALARM PLAN SCALE: 1/8" = 1'-0"