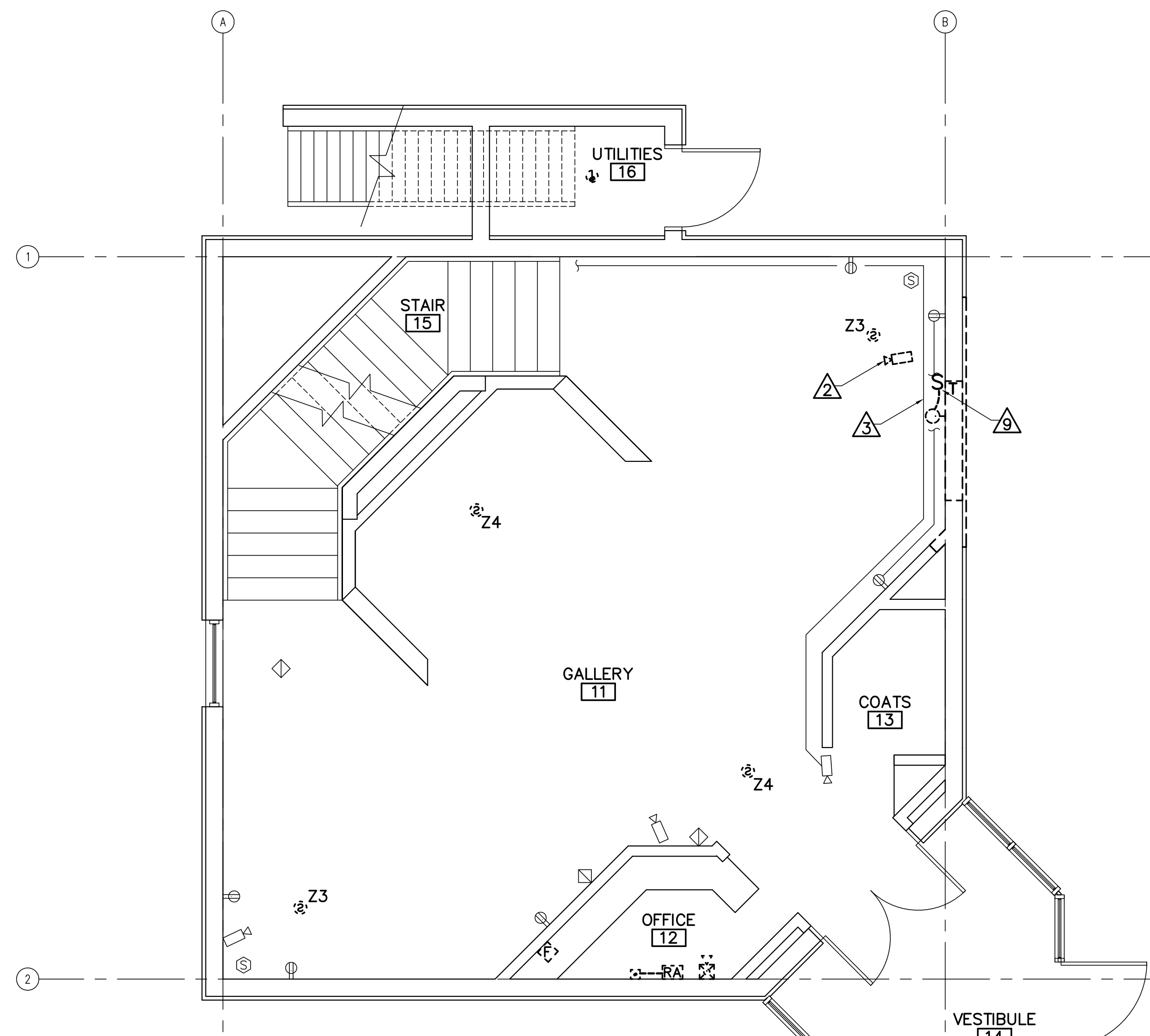
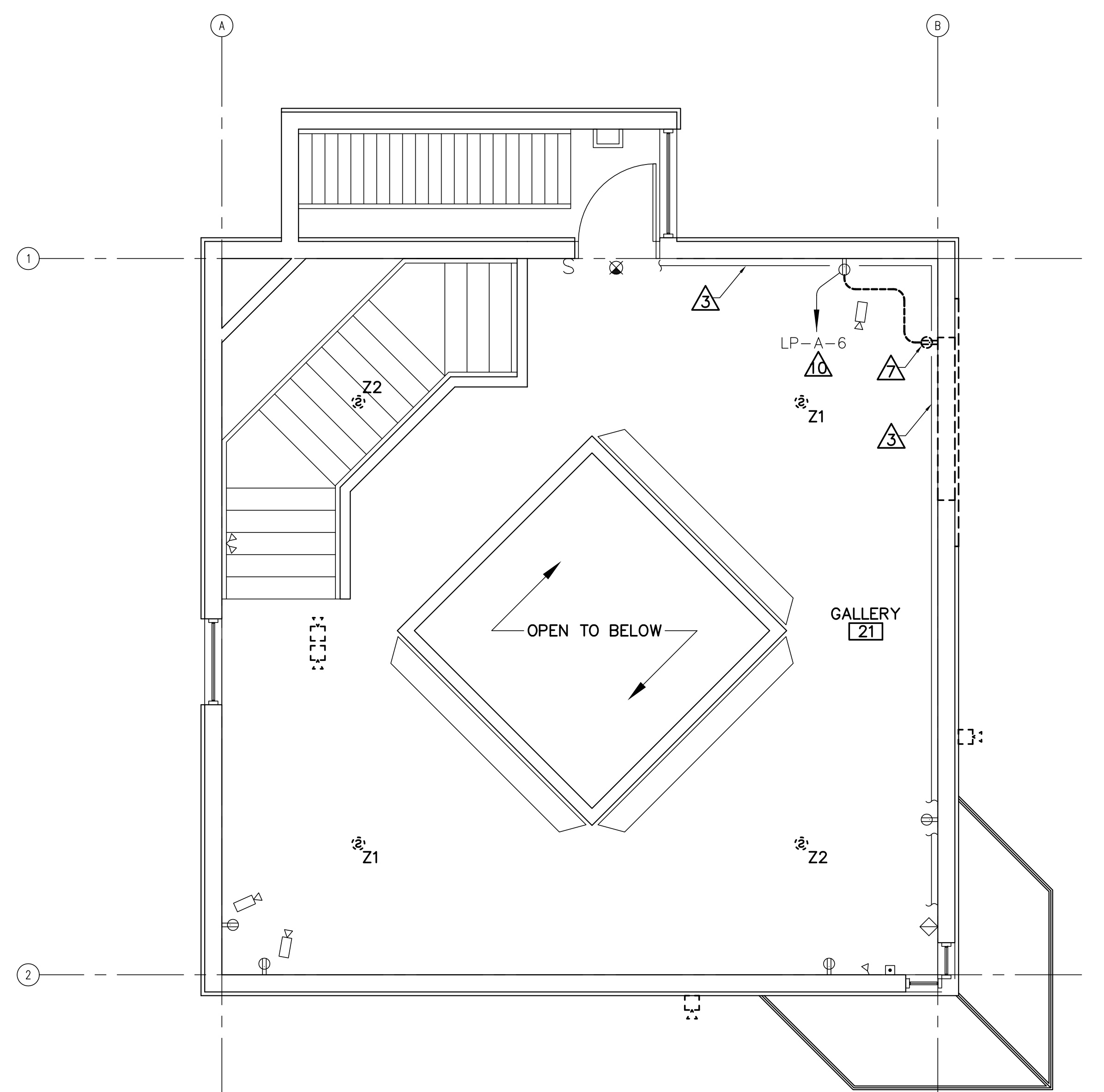


1 BASEMENT ELECTRICAL REMOVALS PLAN
 ED101 SCALE: 1/4"=1'-0"
 PLAN NORTH



2 FIRST FLOOR ELECTRICAL REMOVALS PLAN
 ED101 SCALE: 1/4"=1'-0"
 PLAN NORTH



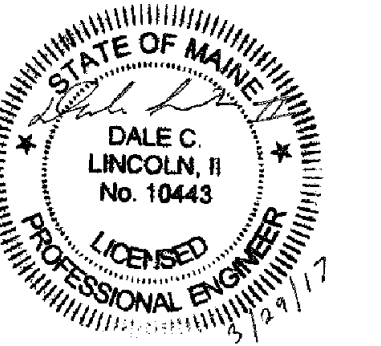
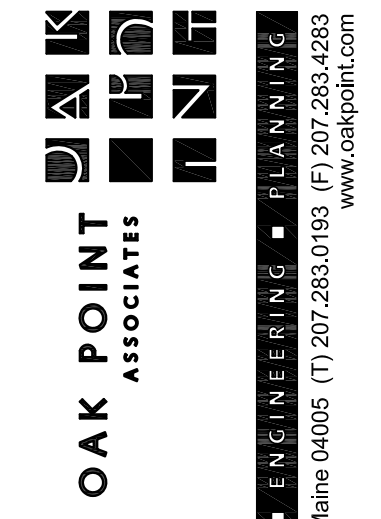
3 SECOND FLOOR ELECTRICAL REMOVALS PLAN
 ED101 SCALE: 1/4"=1'-0"
 PLAN NORTH

DRAWING NOTES

- OBTAIN APPROVAL FROM THE UNIVERSITY IN ADVANCE FOR FIRE ALARM OUTAGES. PROVIDE FIRE WATCH DURING OUTAGES.
- REMOVE EXISTING FIRE ALARM DEVICES. EXISTING FIRE ALARM WIRING SHALL REMAIN FOR REUSE. EXISTING FIRE ALARM SYSTEM PASSED INSPECTION ON 8-24-16 AND IS ASSUMED TO STILL BE IN COMPLIANCE WITH NFPA 72. FOR BIDDING PURPOSES ASSUME REUSE OF EXISTING WIRING WHERE NEW DEVICES ARE SHOWN IN THE SAME LOCATION AS EXISTING DEVICES TO BE REMOVED.
- ENSURE SECURITY SYSTEM REMAINS OPERATIONAL THROUGHOUT CONSTRUCTION. IF OUTAGES ARE REQUIRED OBTAIN APPROVAL FROM THE UNIVERSITY IN ADVANCE AND PROVIDE TEMPORARY COVERAGE, IF REQUIRED.

REMOVALS KEYNOTES:

- 1 FIRE ALARM JUNCTION BOX. EXISTING CIRCUITS ARE EXTENDED FROM THIS LOCATION TO FACP. REMOVE WIRING BETWEEN EXISTING FACP AND JUNCTION BOX. SALVAGE WIRING BETWEEN JUNCTION BOX AND DEVICES.
- 2 TEST EXISTING CAMERA FOR PROPER OPERATION. DOCUMENT RESULTS. REMOVE EXISTING CAMERA AND SALVAGE FOR REINSTALLATION. PROTECT WIRING.
- 3 EXISTING SURFACE MOUNTED METAL C-CHANNEL UTILIZED FOR SECURITY AND COMMUNICATIONS CABLE. MOUNTED ABOVE THE TOP OF THE OPENING REQUIRED FOR THE ELEVATOR. PROTECT DURING CONSTRUCTION.
- 4 EXISTING WALL MOUNTED DATA CABINET WITH PATCH PANELS.
- 5 EXISTING TELEPHONE PUNCHDOWN BLOCKS.
- 6 EXISTING DATA OUTSIDE PLANT FIBER TERMINATION BOX.
- 7 REMOVE RECEPTACLE AND WIRING. EMBEDDED CONDUIT SHALL REMAIN.
- 8 COORDINATE WITH UNIVERSITY TO RELOCATE STORAGE SHELVING TO ACCOMMODATE ELECTRICAL EQUIPMENT.
- 9 REMOVE TIMER SWITCH AND ASSOCIATED FIXTURE.
- 10 FIELD VERIFY CIRCUIT.
- 11 EXISTING FENWAL MODEL 2212 PANEL. REFER TO PARTIAL FIRE ALARM RISER DIAGRAM ON SHEET E-501.



DESIGNED BY: HRM
 DRAWN BY: BPD
 CHECKED BY: DCL
 PROJECT: 21602.16

UNIVERSITY OF NEW ENGLAND
 PORTLAND CAMPUS
 Fine Arts Gallery
 716 Stevens Avenue
 Portland, ME 04103-2693

FINE ARTS GALLERY
 ELEVATOR ADDITION
 FOR PERMITTING ONLY - NOT FOR CONSTRUCTION

BASEMENT,
 FIRST, AND
 SECOND FLOOR
 ELECTRICAL
 REMOVALS
 PLANS

SCALE: AS NOTED
 DATE: 3-29-17

DWG.: ED101

SHEET: 24 OF 26

