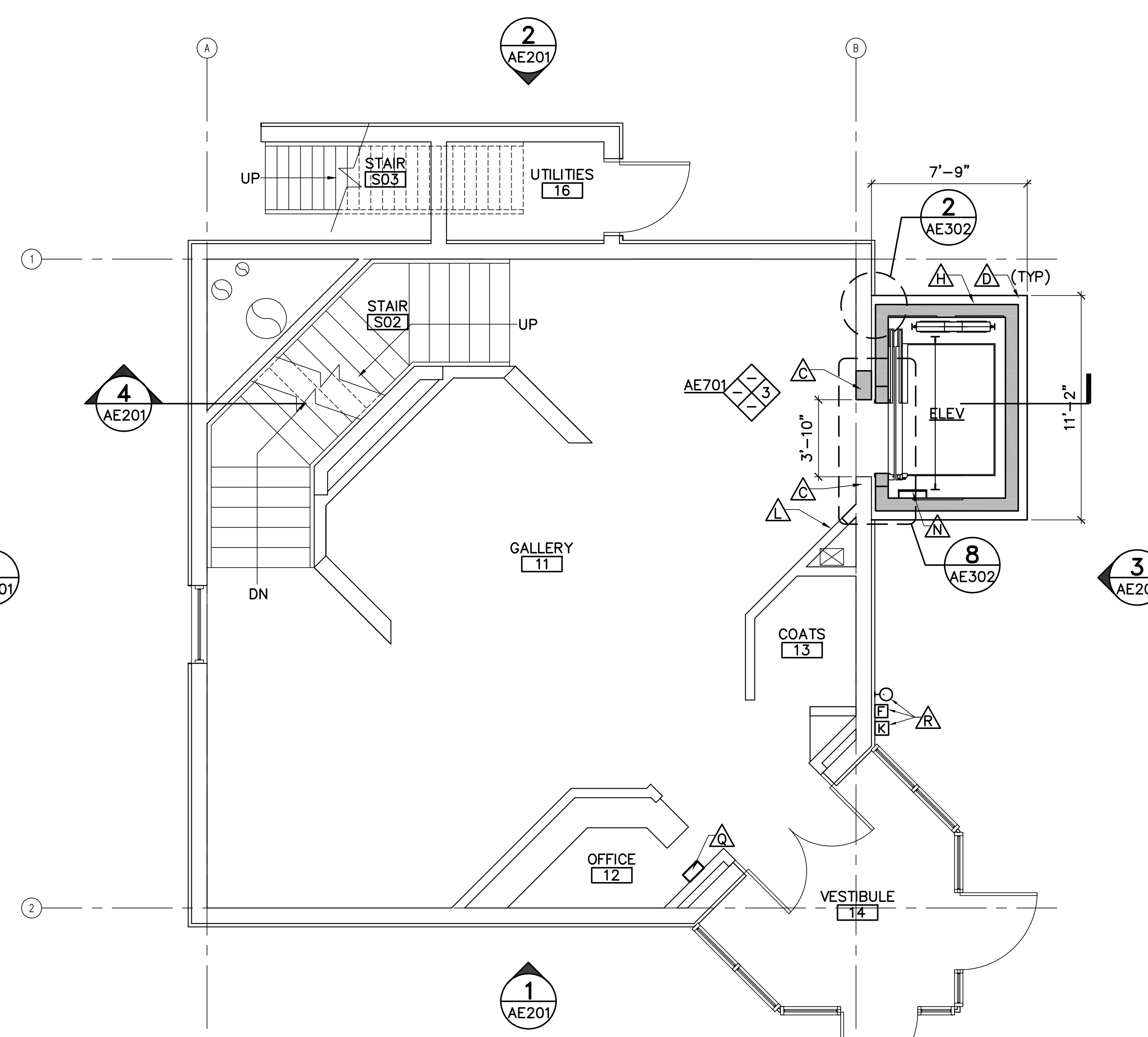


1 BASEMENT FLOOR PLAN
AE101 SCALE: 1/4"=1'-0"



2 FIRST FLOOR PLAN
AE101 SCALE: 1/4"=1'-0"



5 PART BASEMENT REFLECTED CEILING PLAN
AE101 SCALE: 1/4"=1'-0"

NOTE: COORDINATE CEILING MOUNTED EQUIPMENT WITH MECHANICAL AND ELECTRICAL DRAWINGS.

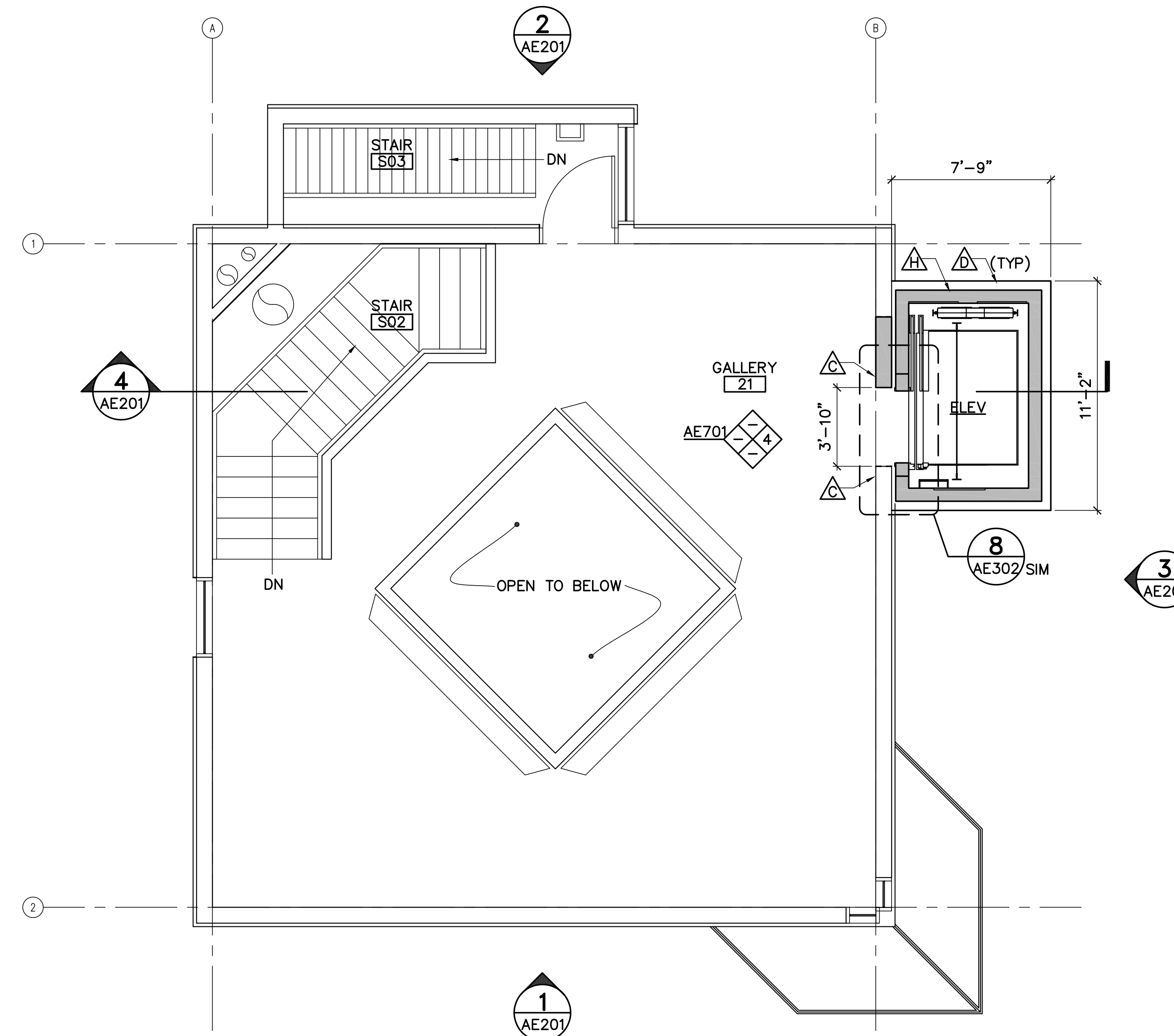


LEGEND:

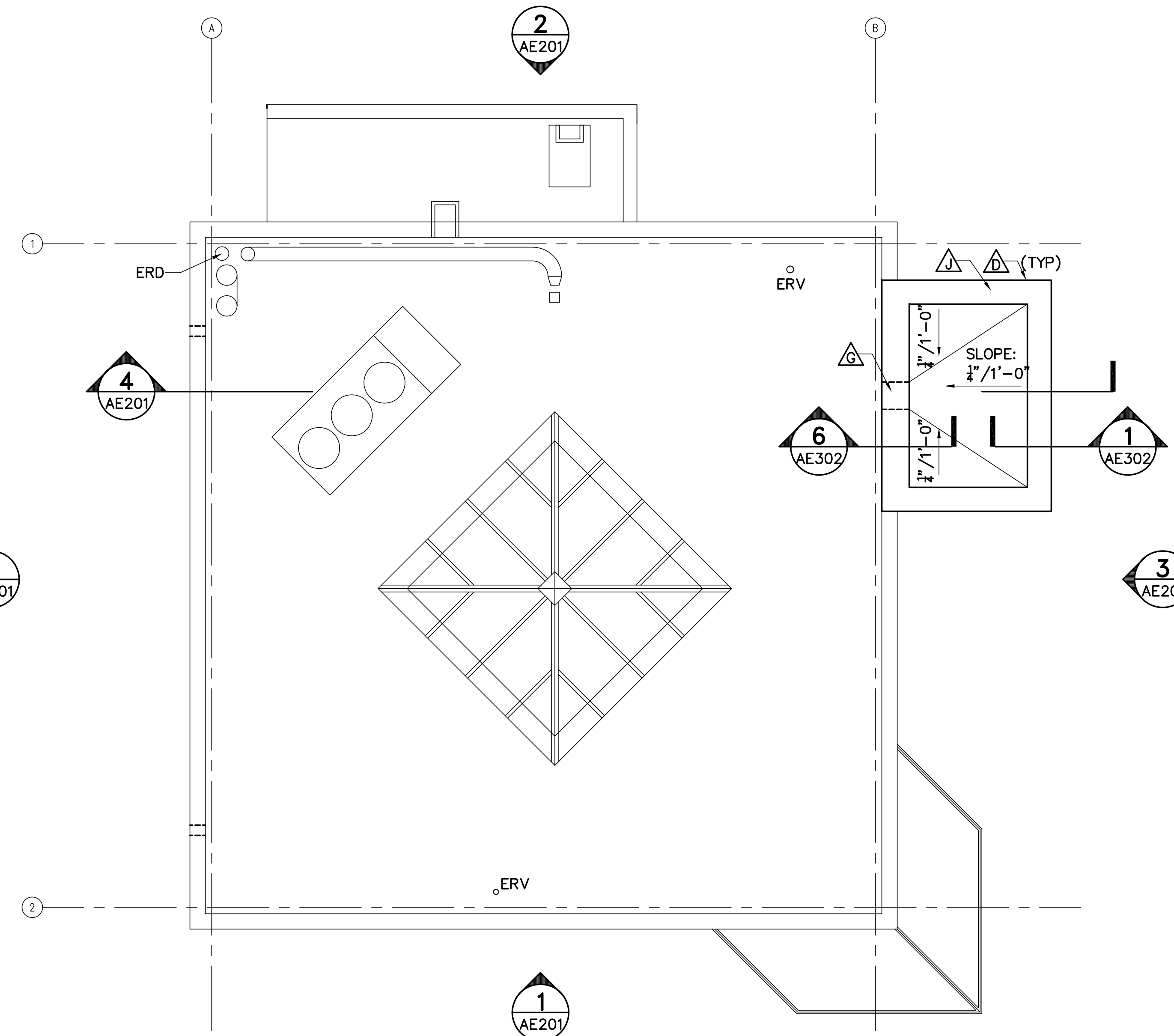
- EXISTING GYPSUM BOARD CEILING
- GYPSUM BOARD CEILING
- PATCH GYPSUM BOARD CEILING
- ACCESS DOOR 18"x18"
- SUPPLY DIFFUSER
- TRACK LIGHTING
- SPRINKLER HEAD
- NEW WALLS

KEYNOTES: (THIS SHEET ONLY.)

- CARPET FLOORING TO MATCH EXISTING. PROVIDE RUBBER TRANSITION STRIP AT EXISTING CARPET EDGE.
- INFILL METAL STUD WALL WHERE PAPER TOWEL DISPENSER WAS REMOVED.
- INFILL OPENING.
- EIFS SYSTEM TO MATCH EXISTING.
- GWB SOFFIT - SEE DETAIL 6/AE301.
- SUSPENDED GYPSUM BOARD CEILING ON SUSPENDED METAL FRAMING.
- 8"x16" SCUPPER - SEE DETAIL 5/AE302.
- ELEVATOR SHAFT - REFER TO STRUCTURAL DRAWINGS.
- INFILL CONCRETE SLAB AT PLUMBING REMOVALS. SEE DETAIL 5/SB101.
- MTL PARAPET COPING TO MATCH EXISTING.
- PATCH GYPSUM BOARD WALL AT REMOVED PLUMBING.
- METAL STUD FRAMING WITH GYPSUM BOARD FINISH TO MATCH EXISTING.
- PATCH EXISTING GYPSUM BOARD CEILING AT SOFFIT.
- METAL LADDER. SEE DETAIL 2/AE301.
- PATCH EXISTING GYP BD AT WALL REMOVALS.
- COORDINATE EXISTING FLOOR PLATE CLEAN OUT COVER WITH CARPET INSTALLATION.
- WALL MOUNTED PANEL - SEE MECHANICAL DRAWINGS.
- WALL MOUNTED ELECTRICAL EQUIPMENT. COORDINATE INSTALLATION WITH ELECTRICAL DRAWINGS.



3 SECOND FLOOR PLAN
AE101 SCALE: 1/4"=1'-0"



4 ROOF PLAN
AE101 SCALE: 1/4"=1'-0"

