

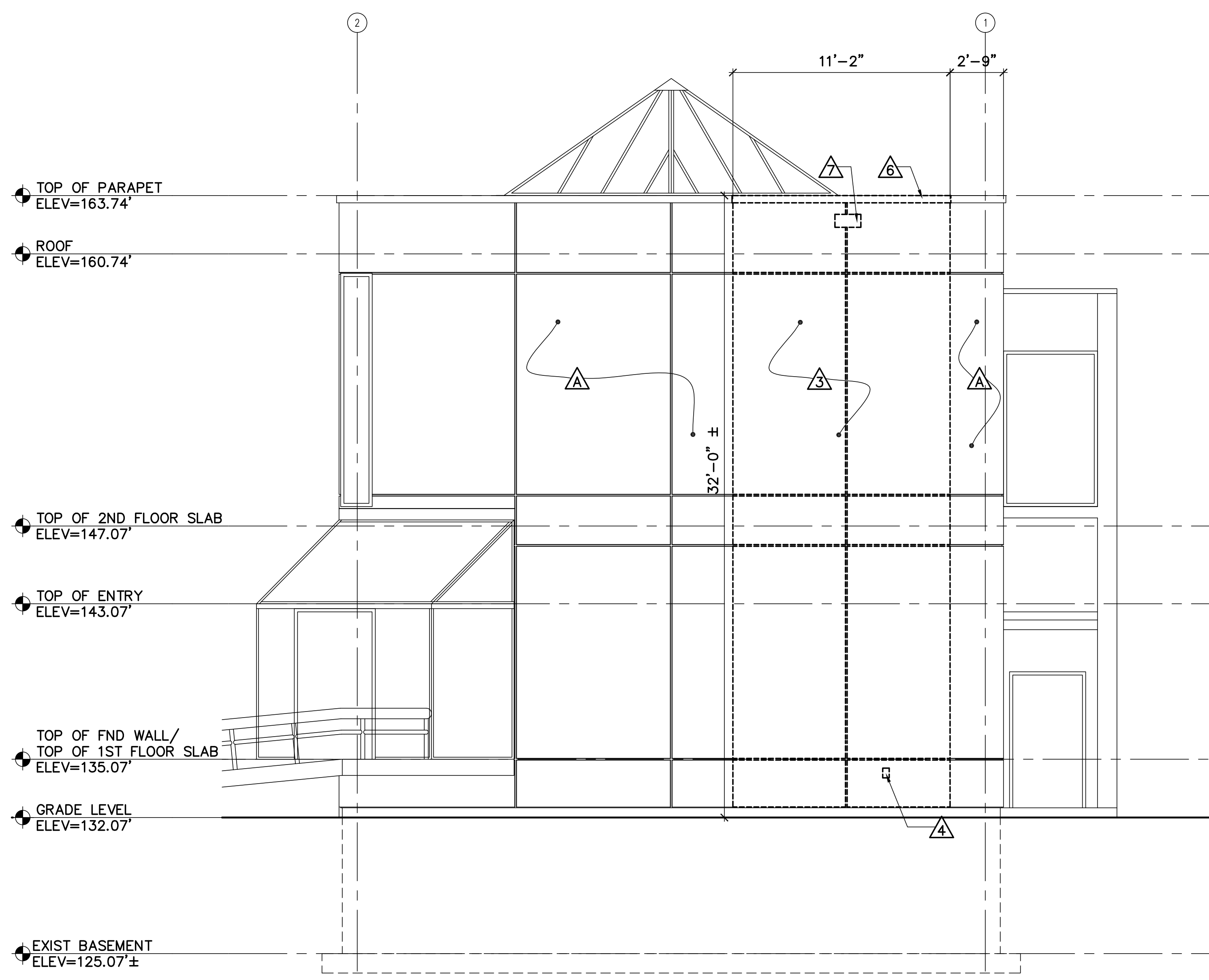
DESIGNED BY: WVS
 DRAWN BY: WVB
 CHECKED BY: WVB
 PROJECT: 21602.16

**UNIVERSITY OF NEW ENGLAND
 PORTLAND CAMPUS**
 Fine Arts Gallery
 716 Stevens Avenue
 Portland, ME 04103-2893

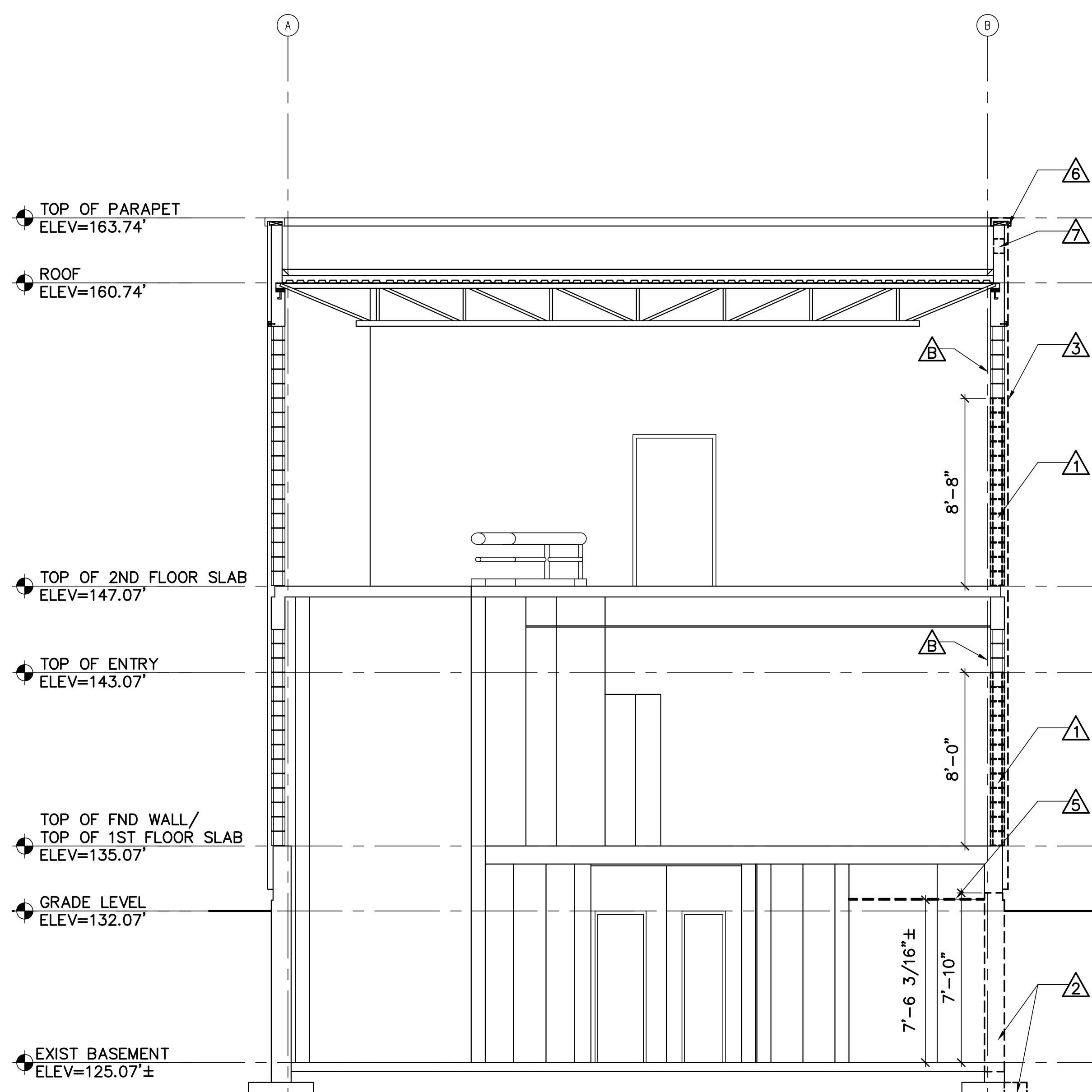
**FINE ARTS GALLERY
 ELEVATOR ADDITION**
 FOR PERMITTING ONLY - NOT FOR CONSTRUCTION

**REMOVALS
 ELEVATION
 AND
 BUILDING
 SECTION**

SCALE: AS NOTED
 DATE: 3-29-17
 DWG. **AD201**
 SHEET: **13** OF **26**



1 REMOVALS NORTH ELEVATION
 AD101 AD201 SCALE: 1/4"=1'-0"



2 REMOVALS BUILDING SECTION
 AD101 AD201 SCALE: 1/4"=1'-0"

GENERAL NOTES:

- ITEMS ON THIS SHEET ARE EXISTING UNLESS OTHERWISE NOTED.
- COORDINATE REMOVALS WITH STRUCTURAL, MECHANICAL AND ELECTRICAL REMOVALS DRAWINGS.

EXISTING KEYNOTES: (THIS SHEET ONLY)

- △ EIFS SYSTEM OVER CMU.
- △ GYPSUM BOARD, FURRING AND RIGID INSULATION.

REMOVALS KEYNOTES: (THIS SHEET ONLY)

- △ SAWCUT AND REMOVE PORTION OF CMU WALL - COORDINATE WITH STRUCTURAL DRAWINGS.
- △ SAWCUT AND REMOVE PORTION OF CONCRETE FOUNDATION WALL AND FOOTING - COORDINATE WITH STRUCTURAL DRAWINGS.
- △ REMOVE PORTION OF EIFS SYSTEM.
- △ REMOVE EXISTING HOSE BIBB - COORDINATE WITH PLUMBING REMOVALS DRAWINGS.
- △ REMOVE GYPSUM BOARD CEILING SYSTEM.
- △ REMOVE PORTION OF METAL COPING.
- △ SAW CUT AND REMOVE 8"x16" OPENING IN EXIST. CONC. PARAPET PER NEW SCUPPER. COORDINATE LOCATION WITH NEW SCUPPER OPENING. SEE DETAIL 4/SF201 AND 5/AE302.

