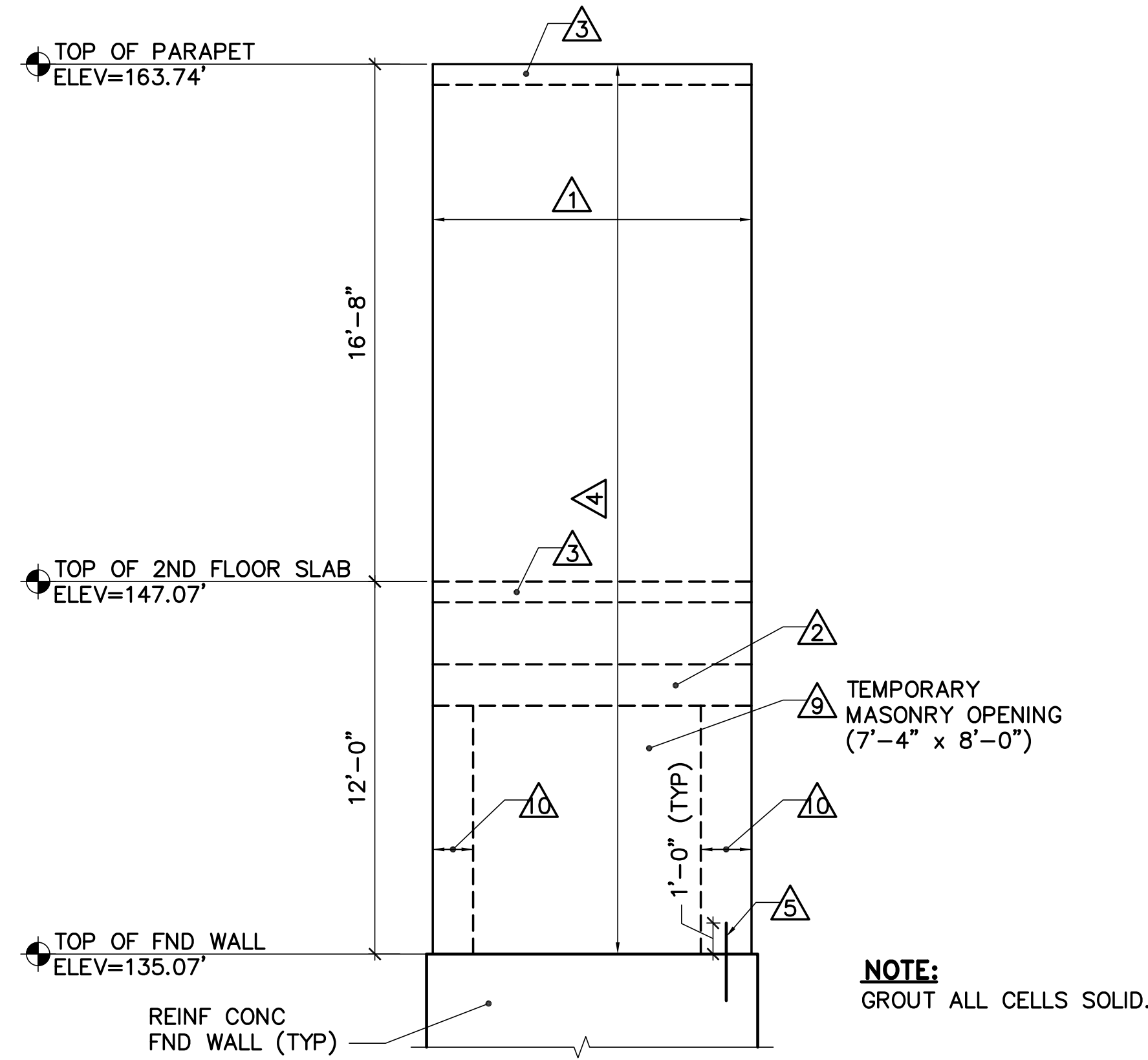


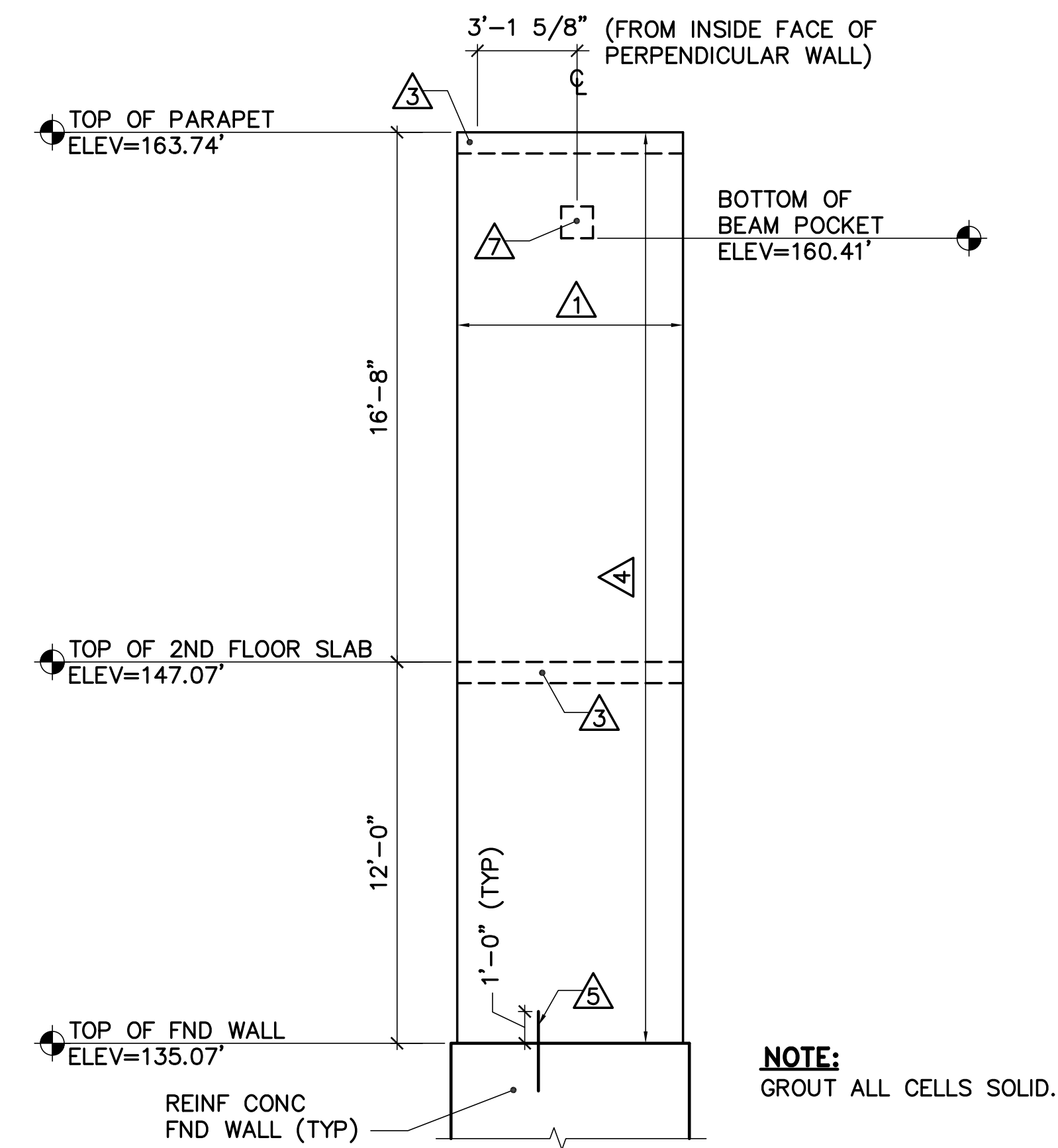
**1 ELEVATOR ADDITION CMU WALL #1 ELEVATION**

SB101\_SF101\_SF501 SF201 SCALE: 1/4"=1'-0"



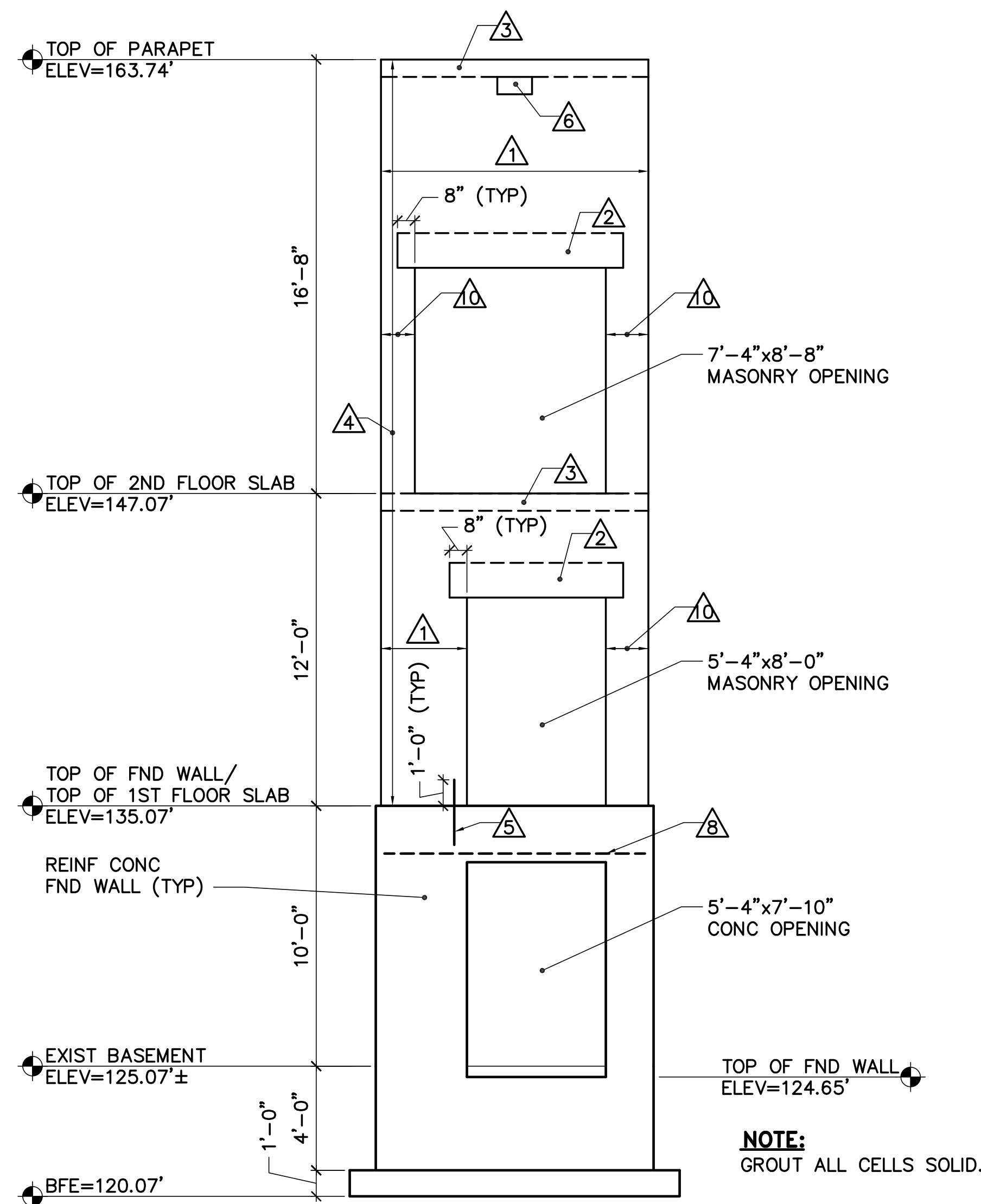
**2 ELEVATOR ADDITION CMU WALL #2 ELEVATION**

SB101\_SF101\_SF501 SF201 SCALE: 1/4"=1'-0"



**3 ELEVATOR ADDITION CMU WALL #3 ELEVATION**

SB101\_SF101\_SF501 SF201 SCALE: 1/4"=1'-0"



**4 ELEVATOR ADDITION CMU WALL #4 ELEVATION**

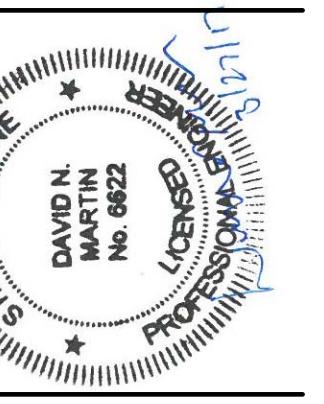
SB101\_SF101\_SF501 SF201 SCALE: 1/4"=1'-0"

**GENERAL SHEET NOTES:**

1. PROVIDE #5 VERTICAL REINFORCING STEEL IN THE CELL ADJACENT TO EACH MASONRY OPENING AND EXTEND THE REINFORCING 8" VERTICALLY ABOVE THE OPENING.
2. REFER TO MASONRY NOTES ON SHEET S-001 FOR MINIMUM LAP SPLICE LENGTH.

**KEYNOTES: (THIS SHEET ONLY)**

- △ 8" REINFORCED CMU WALL WITH #5'S VERTICAL AT 1'-4" ON CENTER (GROUT ALL CELLS SOLID).
- △ 1'-4" DEEP REINFORCED CMU LINTEL WITH (1) #5 (GROUT LINTEL SOLID).
- △ 8" DEEP REINFORCED CMU BOND BEAM WITH (1) #5 (GROUT CELLS SOLID).
- △ CONTINUOUS HORIZONTAL JOINT REINFORCEMENT AT 1'-4" ON CENTER VERTICALLY.
- △ #5 DOWELS, 2'-6" LONG, CAST INTO REINFORCED CONCRETE FOUNDATION WALL SPACED TO MATCH VERTICAL WALL REINFORCING SPACING (LOCATE IN THE SAME CELL).
- △ 8" x 1'-4" OPENING FOR ROOF SCUPPER.
- △ 1'-0" x 1'-0" x 4" DEEP BEAM POCKET FOR HOIST BEAM.
- △ (2) #6'S EXTENDED 3'-0" INTO WALL #3 BEYOND.
- △ ONCE ELEVATOR COMPONENTS ARE INSTALLED, PROVIDE 8" REINFORCED CMU INFILL WITH #5'S SPACED 1'-4" ON-CENTER.
- △ 8" REINFORCED CMU WALL WITH #5'S VERTICAL AT 8" ON CENTER (GROUT ALL CELLS SOLID) EACH SIDE OF OPENING.



DESIGNED BY: WFG  
 DRAWN BY: MJC  
 CHECKED BY: DNM  
 PROJECT: 21602.16

