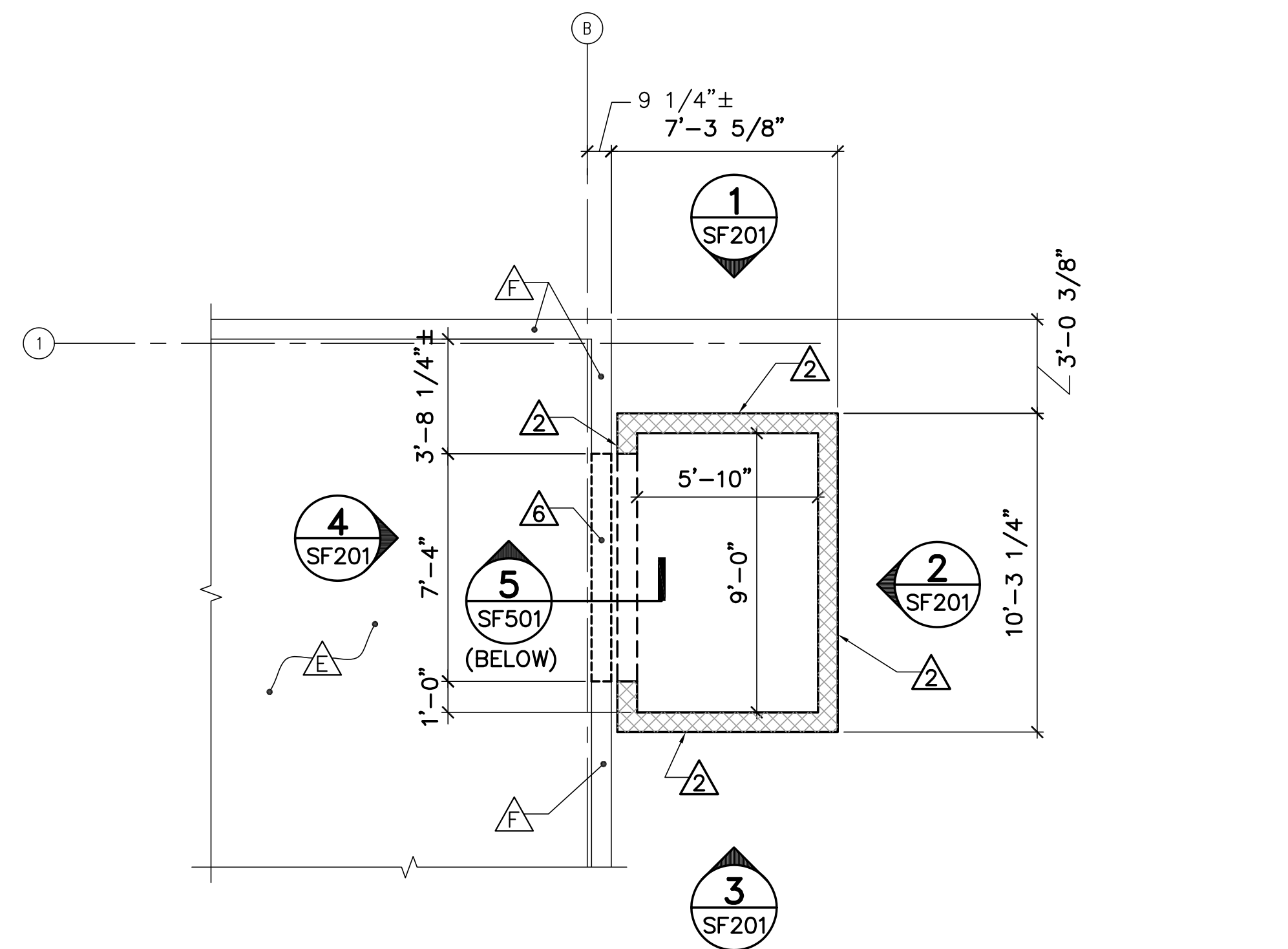
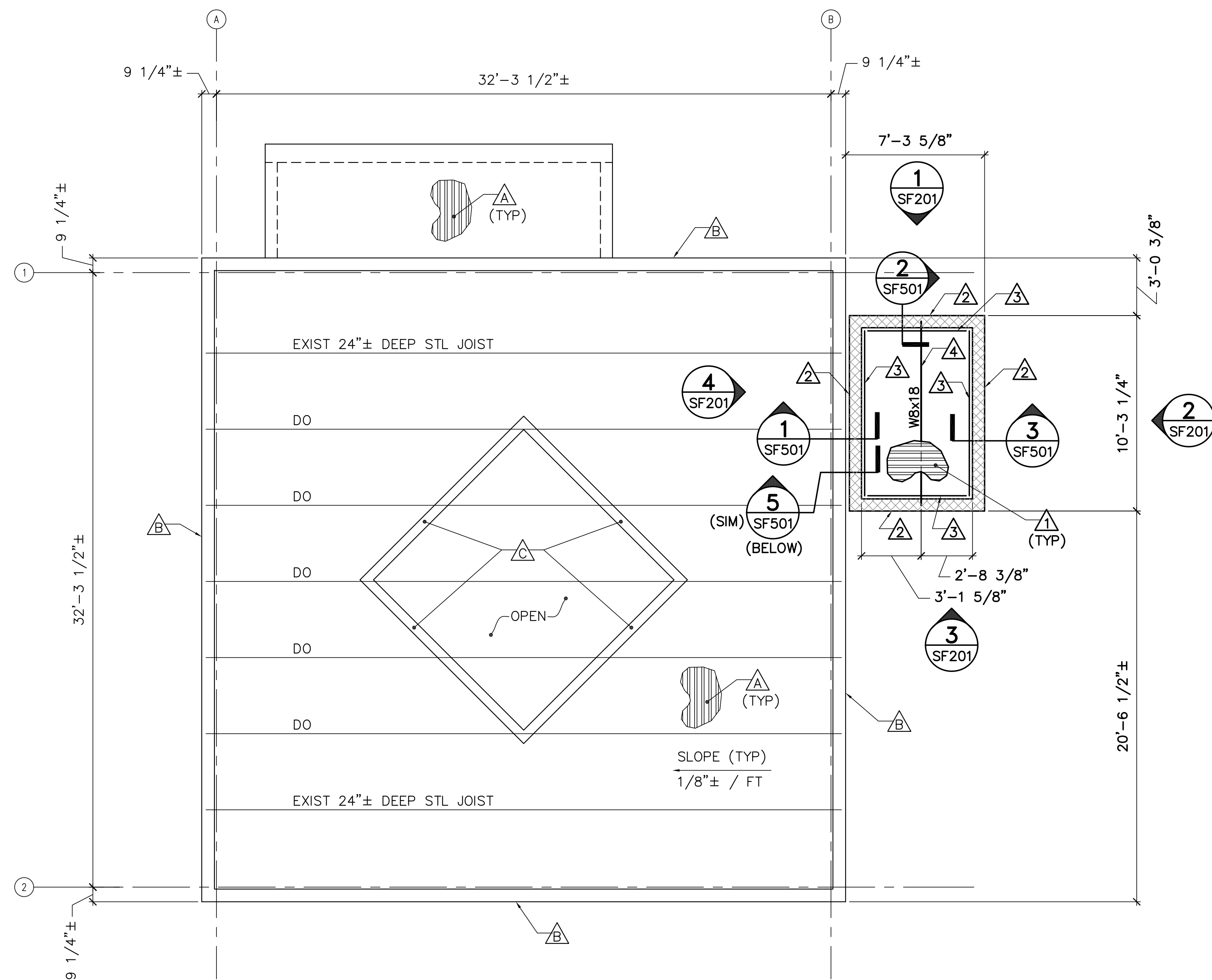


1 ELEVATOR ADDITION PARTIAL FIRST FLOOR FRAMING PLAN
 SF101 SCALE: 1/4"=1'-0" PLAN NORTH



2 ELEVATOR ADDITION PARTIAL SECOND FLOOR FRAMING PLAN
 SF101 SCALE: 1/4"=1'-0" PLAN NORTH



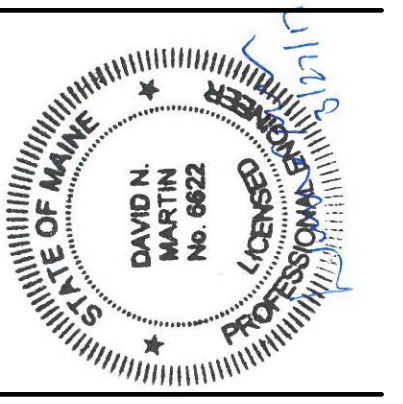
3 ELEVATOR ADDITION ROOF FRAMING PLAN
 SF101 SCALE: 1/4"=1'-0" PLAN NORTH

EXISTING KEYNOTES: (THIS SHEET ONLY)

- △ EXISTING 2-1/2"± CONCRETE SLAB ON 1-1/2"± STEEL DECK.
- △ EXISTING 8"± REINFORCED CONCRETE/CMU WALL.
- △ EXISTING 6"± REINFORCED CONCRETE PARAPET.
- △ EXISTING 10"± REINFORCED CONCRETE STRUCTURAL SLAB. TOP OF EXISTING SLAB ELEVATION = 135.07'±.
- △ EXISTING 6"± REINFORCED CONCRETE STRUCTURAL SLAB. TOP OF EXISTING SLAB ELEVATION = 147.07'±.
- △ EXISTING 8"± REINFORCED CMU WALL.

KEYNOTES: (THIS SHEET ONLY)

- △ 3"x18GA GALVANIZED STEEL ROOF DECK.
- △ 8" REINFORCED CMU WALLS (GROUT ALL CELLS SOLID).
- △ 2.5x3-1/2x3/8 (LLV) EXPANSION BOLTED TO 8" REINFORCED CMU WALL.
- △ W8x18 HOIST BEAM WITH TOP OF STEEL SET A MINIMUM OF 4" BELOW BOTTOM OF STEEL DECK.
- △ SAWCUT AND REMOVE PORTION OF EXISTING REINFORCED CMU WALL (5'-4" LONG x 8'-0" HIGH).
- △ SAWCUT AND REMOVE PORTION OF EXISTING REINFORCED CMU WALL (7'-4" LONG x 8'-8" HIGH).
- △ TEMPORARY 7'-4" LONG x 8'-0" HIGH MASONRY OPENING. ONCE ELEVATOR COMPONENTS ARE INSTALLED, PROVIDE 8" REINFORCED CMU INFILL WITH #5'S SPACED 1'-4" ON-CENTER.



DESIGNED BY: WFG
 DRAWN BY: MJC
 CHECKED BY: DMM
 PROJECT: 21602.16

UNIVERSITY OF NEW ENGLAND
 PORTLAND CAMPUS
 Fine Arts Gallery
 716 Stevens Avenue
 Portland, ME 04103-2683

FINE ARTS GALLERY
 ELEVATOR ADDITION
 FOR PERMITTING ONLY - NOT FOR CONSTRUCTION

ELEVATOR ADDITION
 FRAMING PLANS

SCALE: AS NOTED
 DATE: 3-29-17

DWG.: SF101

SHEET: 9 OF 26

