

DESIGNED BY: WFG  
 DRAWN BY: MJC  
 CHECKED BY: DNM  
 PROJECT: 21602.16

UNIVERSITY OF NEW ENGLAND  
 PORTLAND CAMPUS  
 Fine Arts Gallery  
 716 Stevens Avenue  
 Portland, ME 04103-2693

FINE ARTS GALLERY  
 ELEVATOR ADDITION  
 FOR PERMITTING ONLY - NOT FOR CONSTRUCTION

EXISTING FOUNDATION REMOVALS  
 PLAN AND DETAILS

SCALE: AS NOTED  
 DATE: 3-29-17

DWG.: SD101

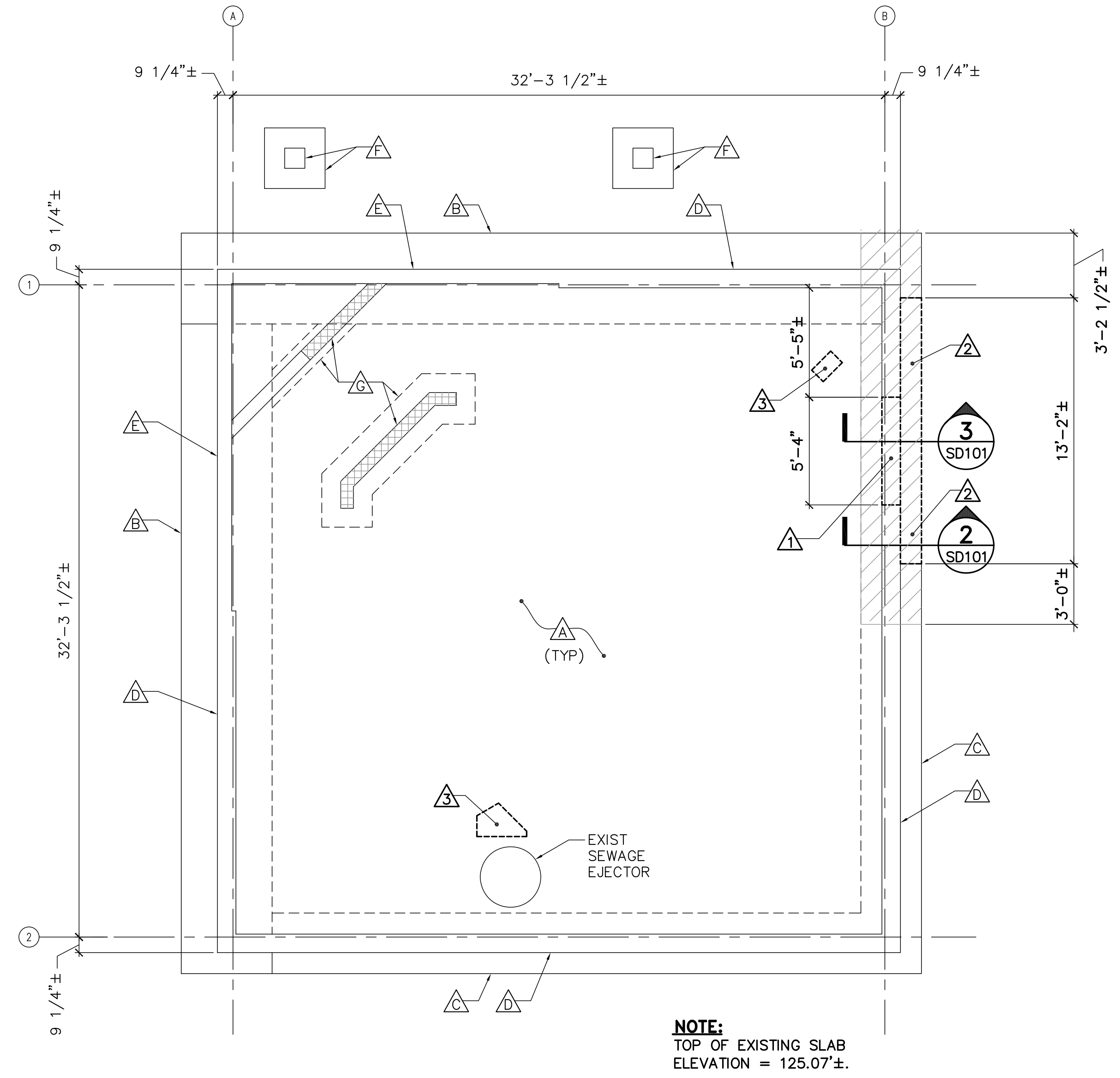
SHEET: 7 OF 26

**EXISTING KEYNOTES: (THIS SHEET ONLY)**

- △ EXISTING 5"± REINFORCED CONCRETE SLAB-ON-GRADE.
- △ EXISTING 1'-6"± x 4'-6"± CONTINUOUS REINFORCED CONCRETE FOOTING.
- △ EXISTING 1'-0"± x 3'-0"± CONTINUOUS REINFORCED CONCRETE FOOTING.
- △ EXISTING 11"± REINFORCED CONCRETE FOUNDATION WALL.
- △ EXISTING 8-1/2"± REINFORCED CONCRETE FOUNDATION WALL.
- △ EXISTING 3'-0"± x 3'-0"± x 1'-6"± DEEP REINFORCED CONCRETE FOOTING WITH 1'-1"± x 1'-1"± REINFORCED CONCRETE PIER.
- △ EXISTING 8"± CMU BLOCK SUPPORTED ON 1'-0"± DEEP REINFORCED CONCRETE FOOTING.

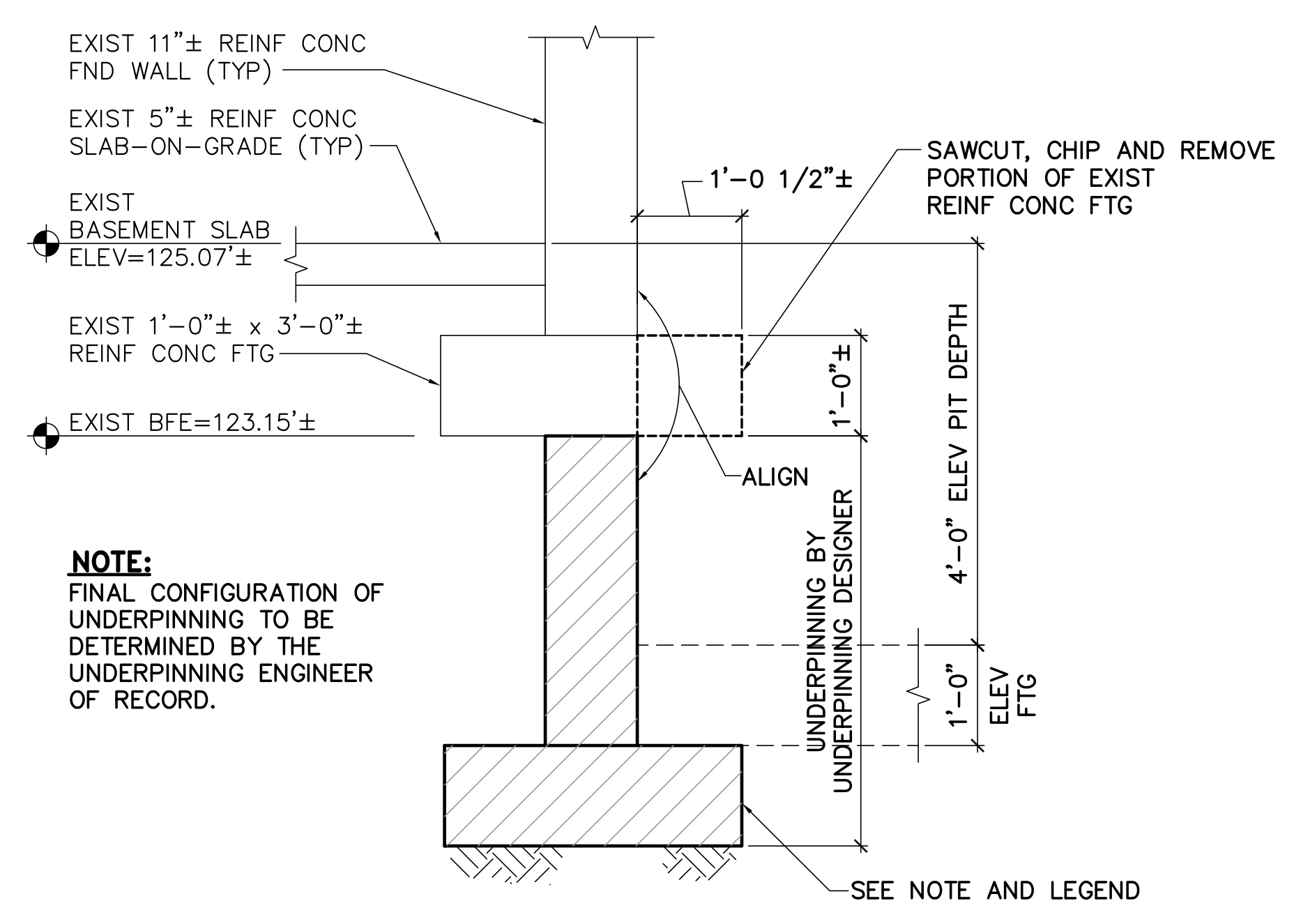
**REMOVALS KEYNOTES: (THIS SHEET ONLY)**

- △ SAWCUT AND REMOVE 5'-4" WIDE BY 7'-10" HIGH OF EXISTING 11"± REINFORCED CONCRETE WALL FOR ELEVATOR DOOR. COORDINATE EXACT SIZE AND LOCATION WITH ELEVATOR MANUFACTURER'S REQUIREMENTS.
- △ SAWCUT AND REMOVE PROTRUDING PORTION OF EXISTING 1'-0"± THICK REINFORCED CONCRETE FOOTING AFTER THE COMPLETION OF THE FOUNDATION UNDERPINNING.
- △ SAWCUT AND REMOVE PORTION OF EXISTING 5"± REINFORCED CONCRETE SLAB-ON-GRADE. COORDINATE EXACT SIZE AND LOCATION WITH MECHANICAL DRAWINGS.

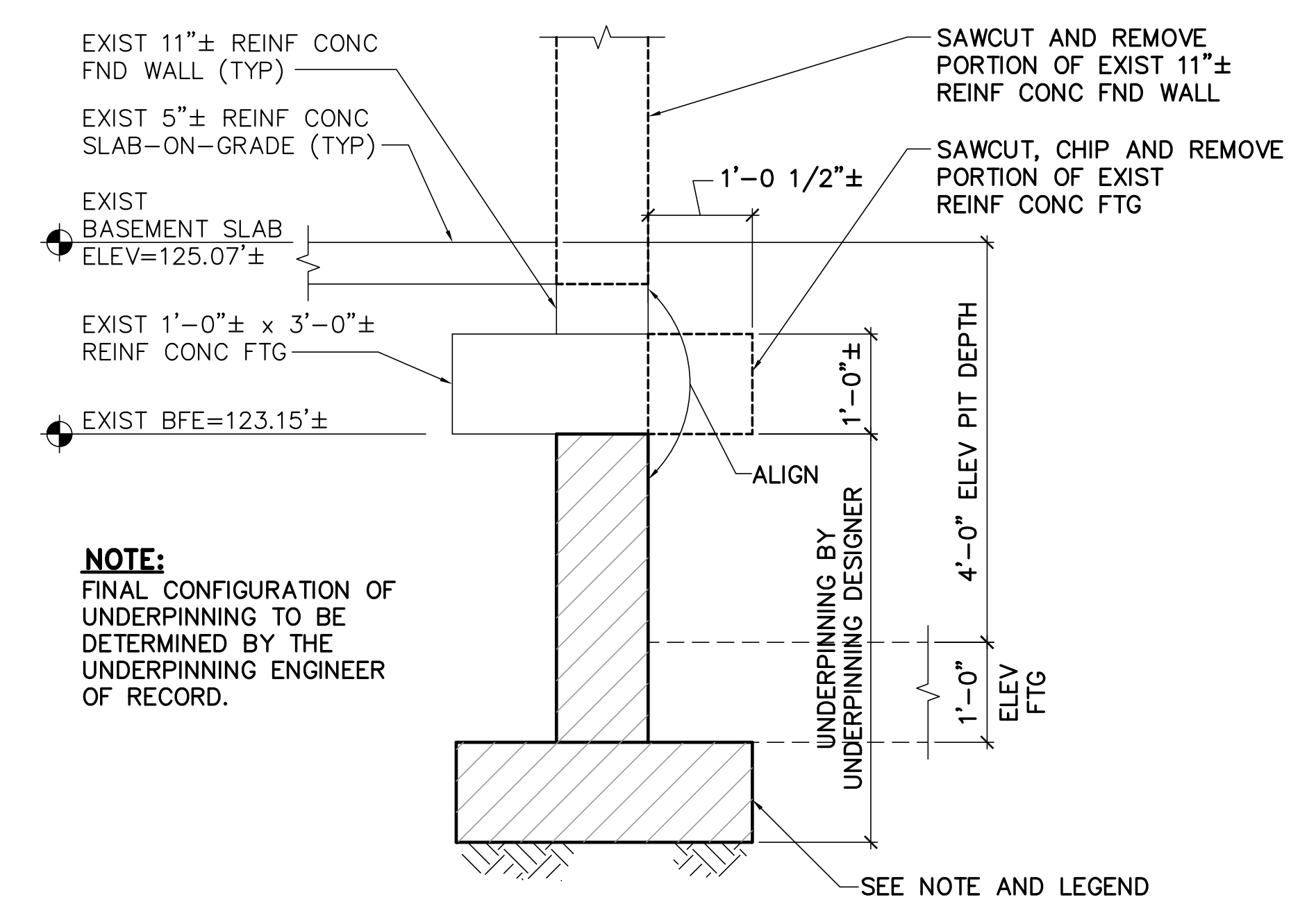


**NOTE:**  
 TOP OF EXISTING SLAB  
 ELEVATION = 125.07'±.

**1 EXISTING FOUNDATION REMOVALS PLAN**  
 SD101 SCALE: 1/4"=1'-0"



**2 EXISTING FTG REMOVALS DETAIL**  
 SD101 SCALE: 3/4"=1'-0"

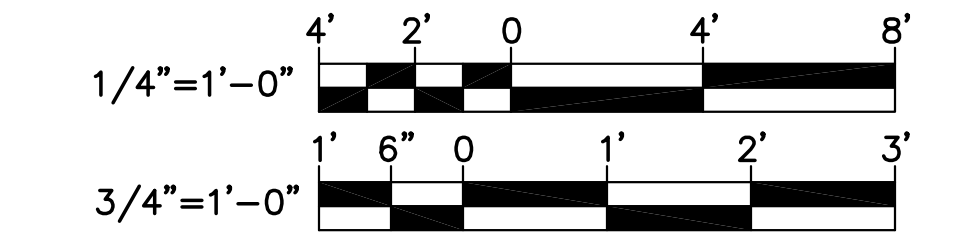


**3 EXISTING FTG REMOVALS DETAIL AT DOOR OPENING**  
 SD101 SCALE: 3/4"=1'-0"

**LEGEND**

UNDERPIN EXISTING BUILDING FOUNDATION PRIOR TO REMOVING THE INDICATED PORTION OF THE EXISTING FOOTING. REFER TO SHEET S-001 FOR UNDERPINNING NOTES.

**GRAPHIC SCALES**



CHECK GRAPHIC SCALES BEFORE USING