



DESIGNED BY: WVB  
 DRAWN BY: CAM  
 CHECKED BY: WVB  
 PROJECT: 21602.16

UNIVERSITY OF NEW ENGLAND  
 PORTLAND CAMPUS  
 Fine Arts Gallery  
 716 Stevens Avenue  
 Portland, ME 04103-2693

FINE ARTS GALLERY  
 ELEVATOR ADDITION  
 FOR PERMITTING ONLY - NOT FOR CONSTRUCTION

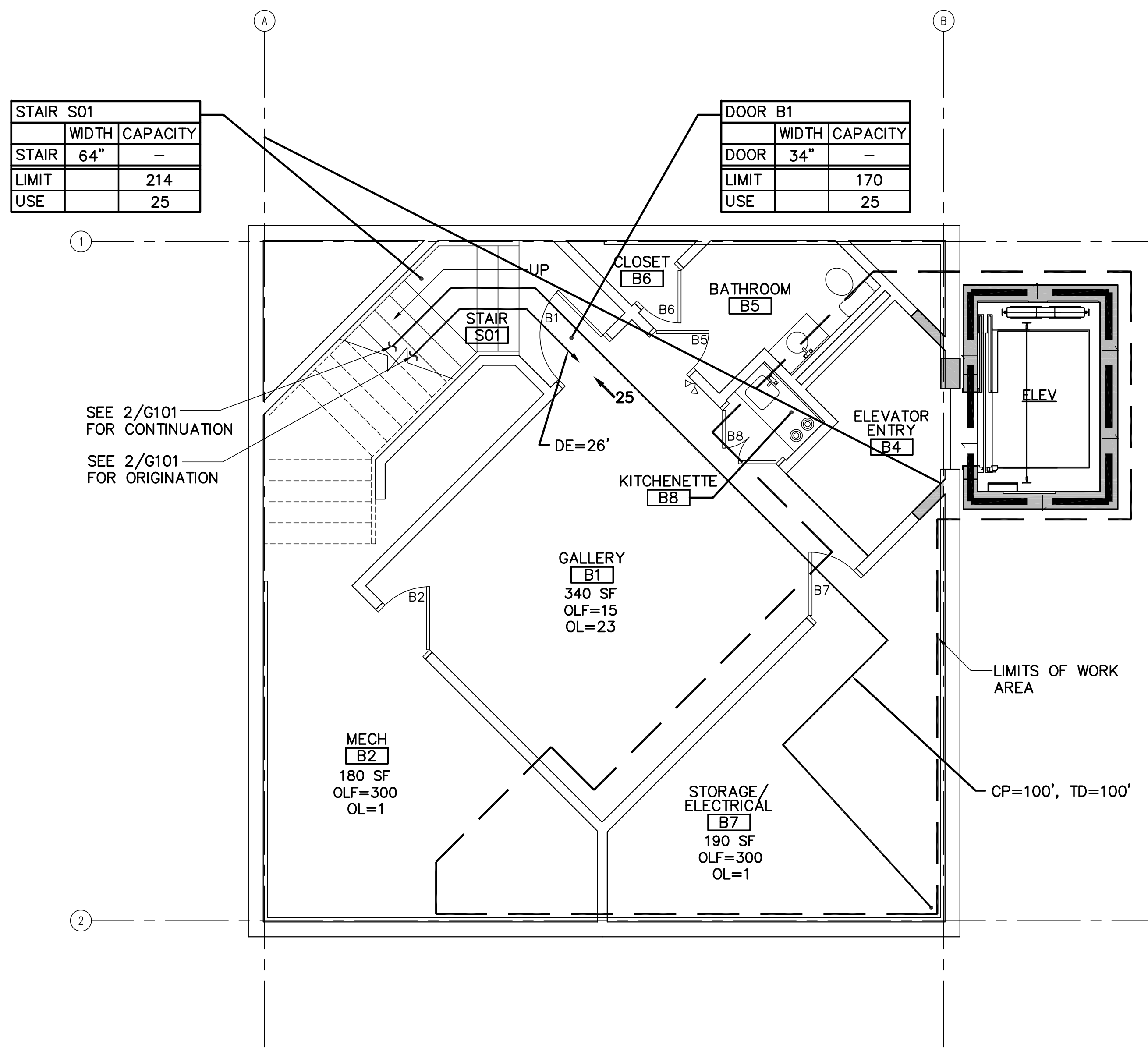
CODE INFORMATION

SCALE: AS NOTED

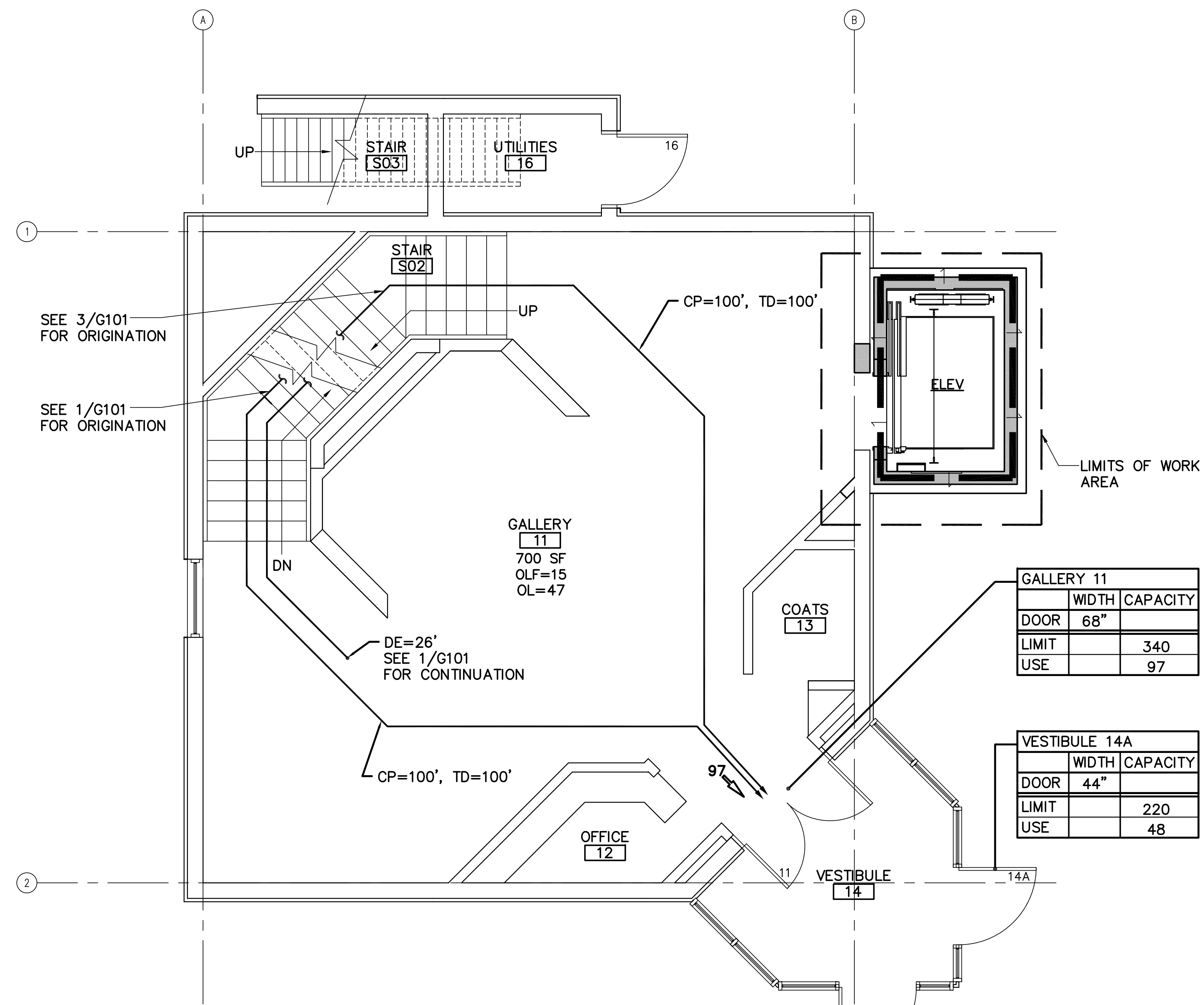
DATE: 3-29-17

DWG.: G-101

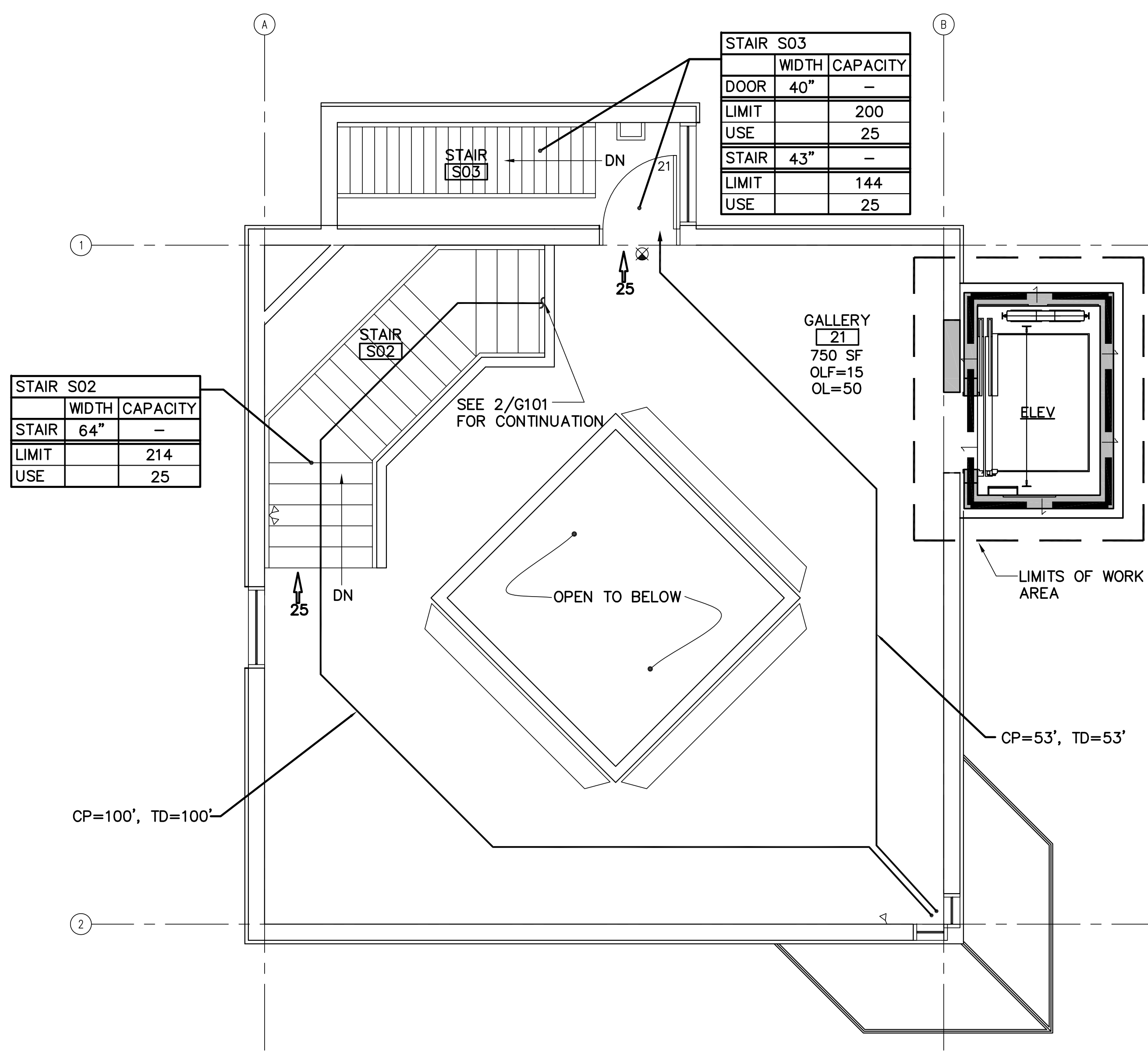
SHEET: 3 OF 26



1 EGRESS BASEMENT FLOOR PLAN  
 G-101 SCALE: 1/4"=1'-0"  
 PLAN NORTH



2 EGRESS FIRST FLOOR PLAN  
 G-101 SCALE: 1/4"=1'-0"  
 PLAN NORTH



3 EGRESS SECOND FLOOR PLAN  
 G-101 SCALE: 1/4"=1'-0"  
 PLAN NORTH

GENERAL CODE INFORMATION	BUILDING CODE SUMMARY
<p>APPLICABLE LIFE SAFETY/BUILDING CODES:</p> <p>NATIONAL STANDARDS</p> <p>1. NATIONAL FIRE CODES PUBLISHED BY THE NATIONAL FIRE PROTECTION ASSOCIATION (NFPA), INCLUDING, BUT NOT LIMITED TO:</p> <p>A. 2010 NFPA 1, FIRE PREVENTION CODE</p> <p>B. 2010 NFPA 10, STANDARD FOR PORTABLE FIRE EXTINGUISHERS</p> <p>C. 2011 NFPA 70, NATIONAL ELECTRIC CODE</p> <p>D. 2010 NFPA 80, STANDARD FOR FIRE DOORS AND OTHER OPENING PROTECTIVES</p> <p>F. 2012 NFPA 90A, STANDARD FOR THE INSTALLATION OF AIR-CONDITIONING AND VENTILATING SYSTEMS</p> <p>G. 2012 NFPA 101, THE LIFE SAFETY CODE</p> <p>H. 2009 NFPA 241, STANDARD FOR SAFEGUARDING CONSTRUCTION ALTERATION, AND DEMOLITION OPERATION</p> <p>STATE OF MAINE CODES</p> <p>1. MAINE UNIFORM BUILDING AND ENERGY CODE (MUBEC) INCLUDING THE FOLLOWING:</p> <p>INTERNATIONAL BUILDING CODE, 2009 EDITION</p> <p>INTERNATIONAL EXISTING BUILDING CODE, 2009 EDITION</p> <p>ASHRAE STANDARD 62.1 2007 VENTILATION FOR ACCEPTABLE INDOOR AIR QUALITY, PUBLISHED BY THE AMERICAN SOCIETY OF HEATING, REFRIGERATING AND AIR-CONDITIONING ENGINEERS, INC.</p> <p>ASHRAE STANDARD 90.1 - 2007 ENERGY STANDARD FOR BUILDINGS EXCEPT LOW RISE RESIDENTIAL BUILDINGS, PUBLISHED BY THE AMERICAN SOCIETY OF HEATING, REFRIGERATING AND AIR-CONDITIONING ENGINEERS, INC.</p>	<p>OCCUPANCY CLASSIFICATION:</p> <p>A-3: ASSEMBLY</p> <p>AUTOMATIC SUPPRESSION SYSTEM:</p> <p>YES, EXISTING HALON</p> <p>TYPE OF CONSTRUCTION:</p> <p>IBC TYPE III(B)</p> <p>NFPA TYPE III(200)</p> <p>OCCUPANCY LOAD FACTORS:</p> <p>ASSEMBLY UNCONCENTRATED: 15 NET SF PER OCCUPANT</p> <p>STORAGE ROOMS: 300 GROSS SF PER OCCUPANT</p> <p>MECHANICAL ROOM: 300 GROSS SF PER OCCUPANT</p> <p>HEIGHT AND AREA:</p> <p>HEIGHT: 2 STORY, ALLOWABLE/2 STORIES, ACTUAL</p> <p>ALLOWABLE FLOOR AREA: 9,500 SF</p> <p>ACTUAL FLOOR AREA:</p> <p>BASEMENT FLOOR AREA: 1,222 SF.</p> <p>FIRST FLOOR AREA: 1,433 SF.</p> <p>SECOND FLOOR AREA: 1,353 SF.</p> <p>EXTERIOR FIRE RESISTANCE RATINGS:</p> <p>EXPOSURE TO OTHER BUILDINGS: NO RATING REQUIRED OR PROVIDED (FIRE SEPARATION DISTANCE ≥ 30')</p>
	<p>INTERIOR FIRE RESISTANCE RATINGS:</p> <p>DESIGNED AS ASSEMBLY USE GROUP</p> <p>CORRIDORS: SINGLE TENANT - NO RATING REQUIRED</p> <p>AREAS WITH INCREASED HAZARD: 1 HOUR REQUIRED / 1 HOUR PROVIDED</p> <p>INTERIOR STAIR: 1 HOUR REQUIRED / 0 HOUR PROVIDED</p> <p>STRUCTURAL ELEMENTS - FIRE RESISTANCE RATINGS REQUIRED FOR THE TYPE OF CONSTRUCTION:</p> <p>EXTERIOR LOAD BEARING WALLS: 2 HOUR</p> <p>EXTERIOR NON-LOAD BEARING WALLS: 0 HOUR</p> <p>NON-LOAD BEARING PARTITIONS: 0 HOUR</p> <p>INTERIOR LOAD BEARING WALLS: 0 HOUR</p> <p>STRUCTURAL FRAME: 0 HOUR</p> <p>FLOOR CONSTRUCTION: 0 HOUR</p> <p>ROOF CONSTRUCTION: 0 HOUR</p>
	<p>LIFE SAFETY CODE SUMMARY</p> <p>OCCUPANCY CLASSIFICATION:</p> <p>EXISTING ASSEMBLY OCCUPANCY</p> <p>AUTOMATIC SUPPRESSION SYSTEM: YES, EXISTING HALON</p> <p>OCCUPANCY LOAD FACTORS:</p> <p>ASSEMBLY AREA: 15 NET SF PER OCCUPANT</p> <p>STORAGE ROOM: 300 GROSS SF PER OCCUPANT</p> <p>MECH/ELECT ROOM: 300 GROSS SF PER OCCUPANT</p> <p>NUMBER OF EXITS:</p> <p>2 REQUIRED EACH STORY</p> <p>BASEMENT LEVEL: 1 PROVIDED</p> <p>FIRST FLOOR: 1 PROVIDED</p> <p>SECOND FLOOR: 2 PROVIDED</p> <p>CAPACITY OF EGRESS COMPONENTS:</p> <p>CLEAR WIDTH PER PERSON:</p> <p>0.2" PER PERSON FOR DOORS</p> <p>0.3" PER PERSON FOR STAIRS</p>
	<p>TOTAL BUILDING OCCUPANT LOAD: 122</p> <p>BASEMENT OCCUPANT LOAD: 25</p> <p>FIRST FLOOR OCCUPANT LOAD: 47</p> <p>SECOND FLOOR OCCUPANT LOAD: 50</p> <p>EXIT SEPARATION: 1/3 DIAGONAL REQUIRED</p> <p>EXIT DISCHARGE:</p> <p>ALL EXITS DISCHARGE DIRECTLY TO THE EXTERIOR.</p> <p>COMMON PATH, DEAD-END, AND TRAVEL DISTANCE LIMITS:</p> <p>EXISTING ASSEMBLY OCCUPANCY</p> <p>COMMON PATH: 75' ALLOWABLE / 100' ACTUAL</p> <p>DEAD END LIMIT: 20' ALLOWABLE / 26' ACTUAL</p> <p>TRAVEL DISTANCE LIMIT: 200' ALLOWABLE / 100' ACTUAL</p> <p>EXIT/EXIT ACCESS FIRE RESISTANCE RATINGS:</p> <p>CORRIDORS: NO RATING REQUIRED</p>

