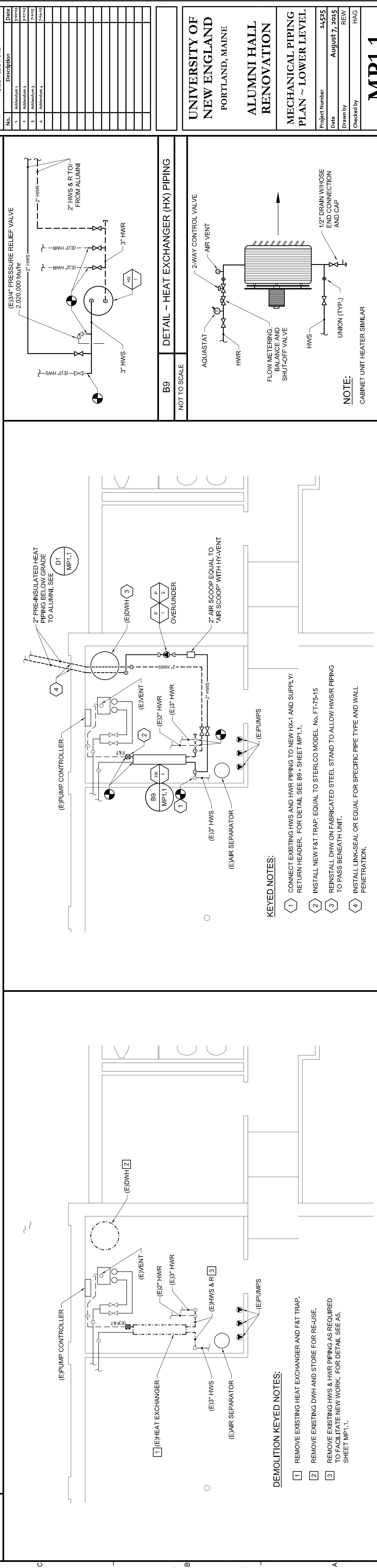
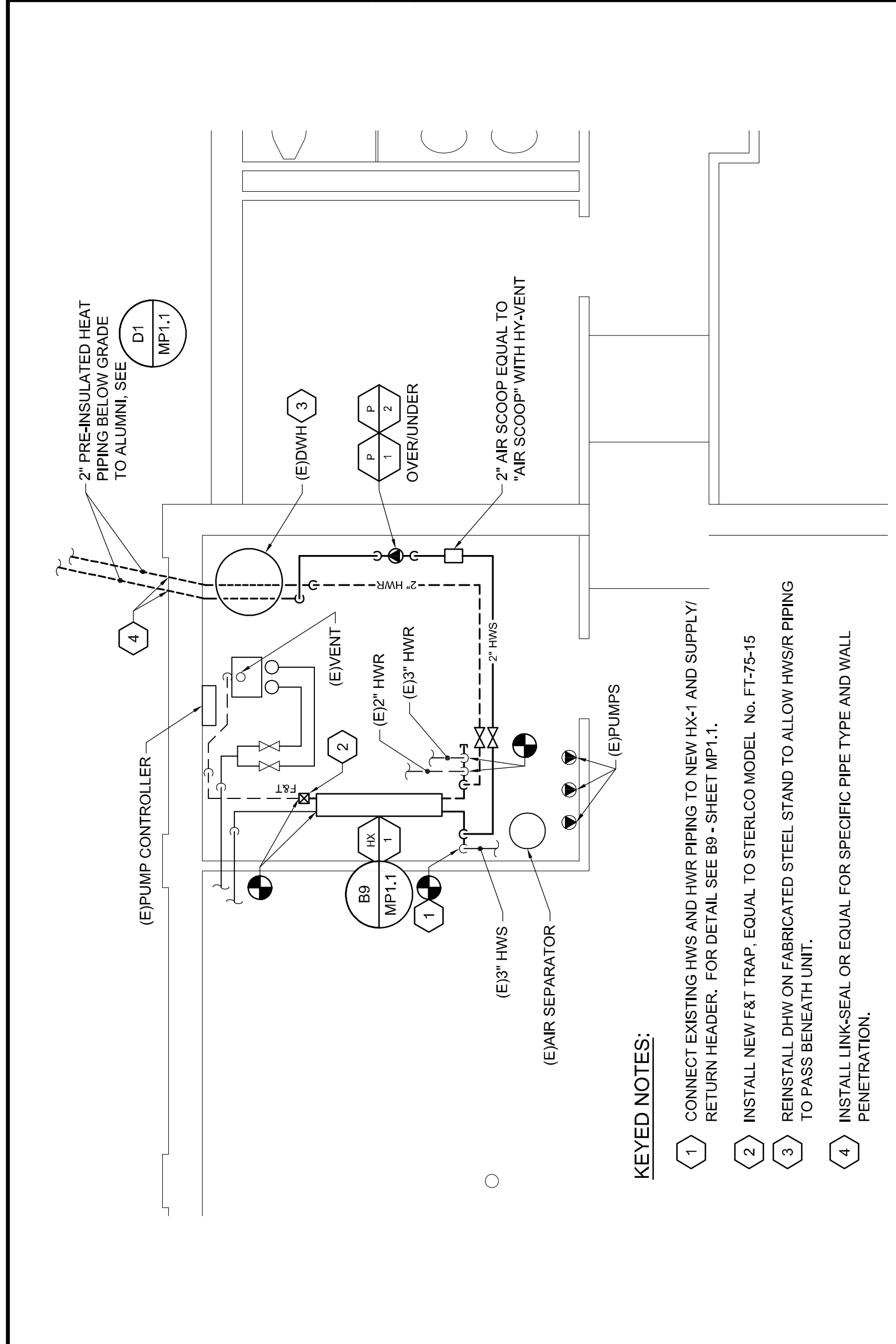


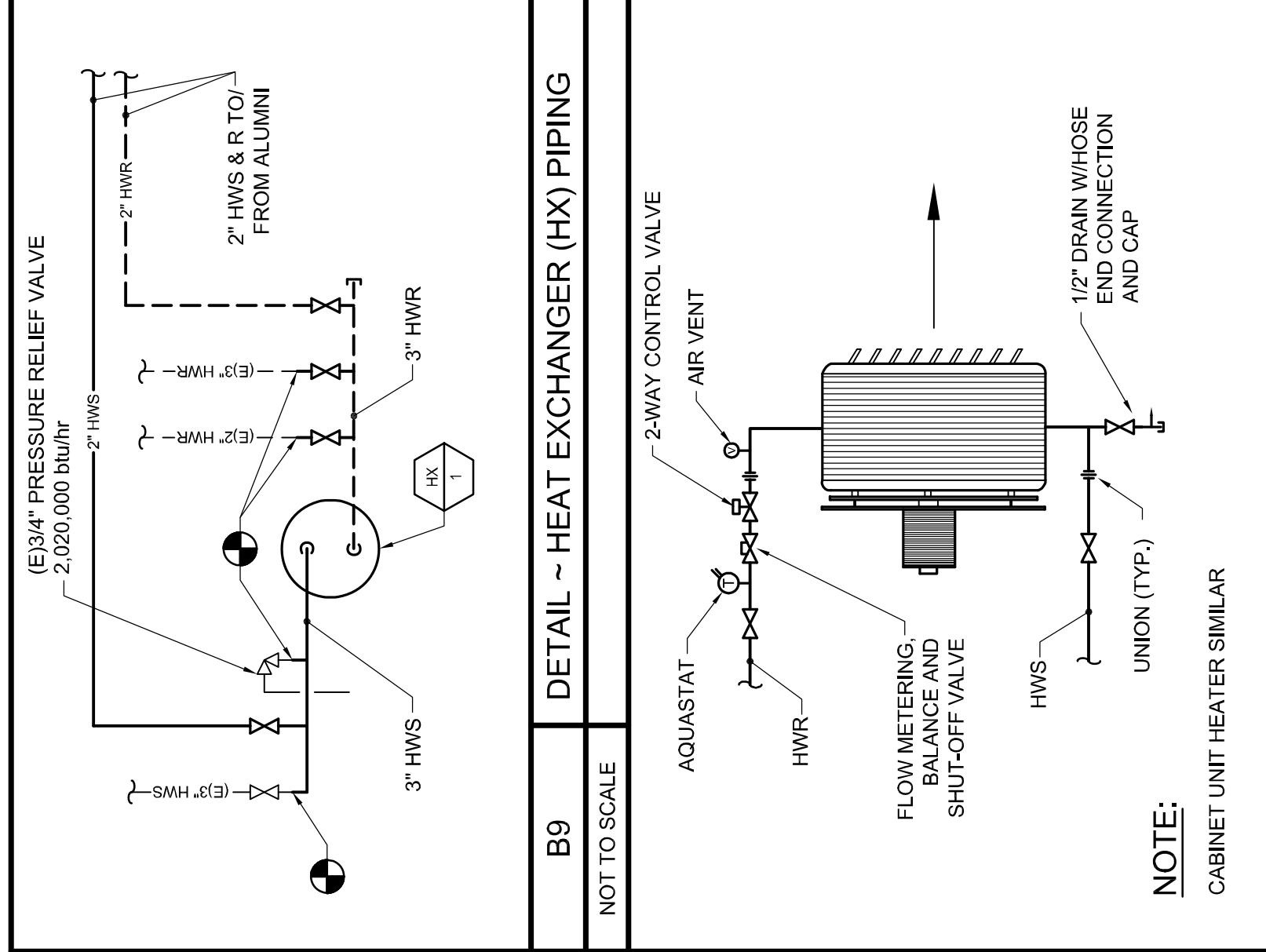
D1
MECHANICAL PIPING PLAN - LOWER LEVEL
3/16" = 1'-0"



A1
DETAIL - ABPLANALP LIBRARY - EXISTING MECHANICAL ROOM DEMOLITION
1/4" = 1'-0"



A5
DETAIL - ABPLANALP LIBRARY - EXISTING MECHANICAL ROOM
1/4" = 1'-0"



B9
DETAIL - HEAT EXCHANGER (HX) PIPING
NOT TO SCALE

65 NEWBURY STREET
PORTLAND, ME 04101
207.761.9000
info@portcityarch.com
WWW.PORTCITYARCH.COM

STATE OF MAINE
INNA MACDONALD
No. 6880
Professional Engineer

Allied Engineering
Structural, Mechanical
Electrical Commissioning

160 Veranda Street
Portland, Maine 04103
T: 207.221.2260
F: 207.221.2266
Web: www.allied-eng.com

ALLIED PROJECT No: 4088
Graphic Scale: 1" = 12'
0' 12'

CONSTRUCTION DOCUMENT SET FOR CONSTRUCTION

No.	Date	Description
1	8/15/2015	Issue for Construction
2	8/15/2015	Issue for Construction
3	8/15/2015	Issue for Construction
4	8/15/2015	Issue for Construction
5	8/15/2015	Issue for Construction

UNIVERSITY OF NEW ENGLAND
PORTLAND, MAINE

ALUMNI HALL RENOVATION

MECHANICAL PIPING PLAN - LOWER LEVEL

Project Number: 14525
Date: August 7, 2015
Drawn by: [Name]
Checked by: [Name]

MP1.1
Scale: AS NOTED