

65 NEWBURY STREET
 PORTLAND, ME 04101
 207.761.9000
 info@portcityarch.com
 WWW.PORTCITYARCH.COM



160 Veranda Street
 Portland, Maine 04103
 T: 207.221.2260
 F: 207.221.2266
 Web: www.allied-eng.com

ALLIED PROJECT No: 4088
 General Scale: 1/2" = 1'-0"

CONSTRUCTION DOCUMENT SET
FOR CONSTRUCTION

No.	Description	Date
1	As Issued	7/20/15
2	Revisions	7/20/15
3	Revisions	7/20/15
4	Revisions	7/20/15
5	Revisions	7/20/15

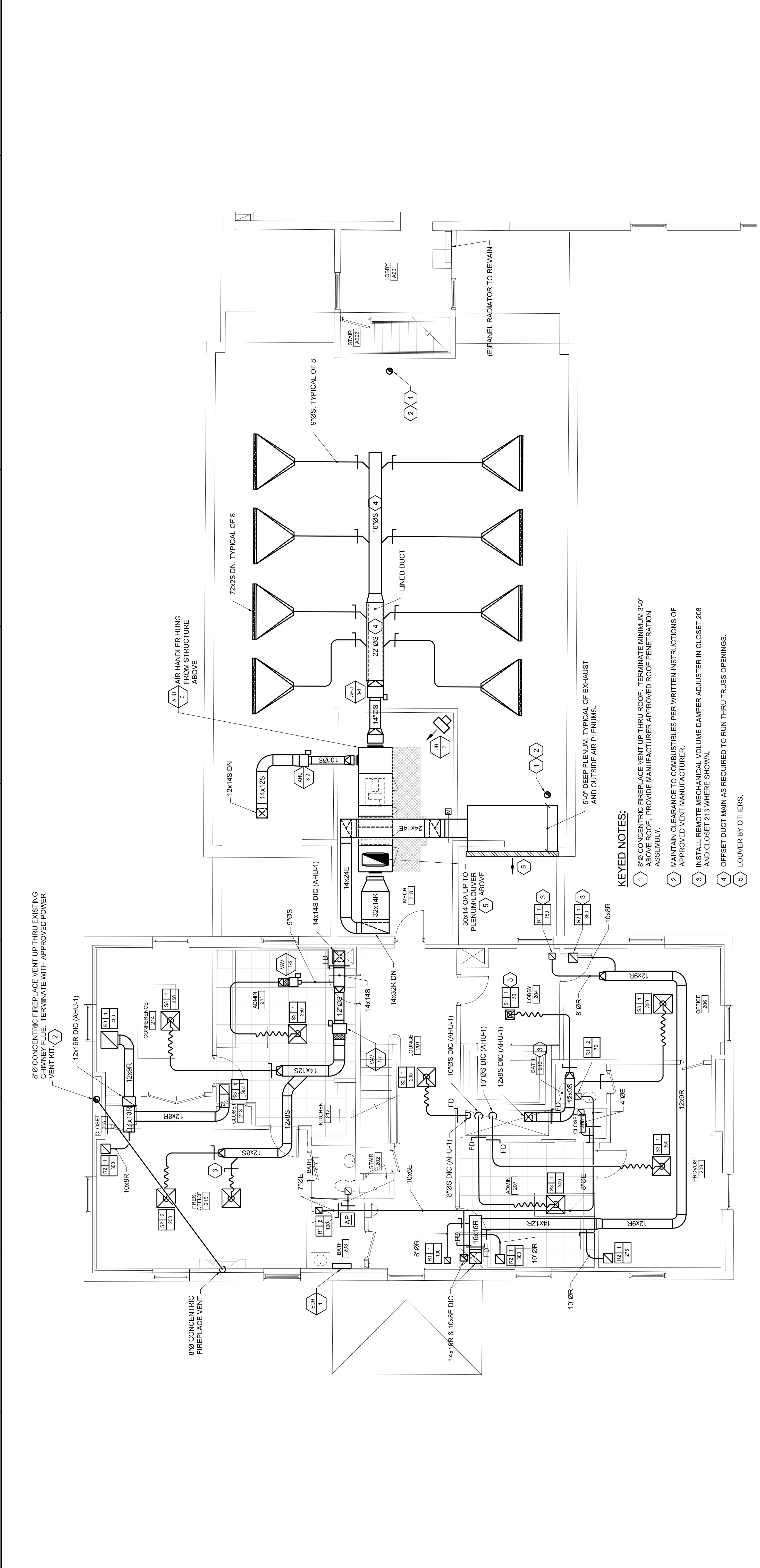
UNIVERSITY OF NEW ENGLAND
 PORTLAND, MAINE

ALUMNI HALL RENOVATION

MECHANICAL PLAN ~ SECOND FLOOR

Project Number: 14525
 Date: August 7, 2015
 Drawn by: [blank]
 Checked by: HAG

MH1.3
 Scale: AS NOTED



- KEYED NOTES:**
- 8"Ø CONCENTRIC FIREPLACE VENT UP THRU ROOF. TERMINATE MINIMUM 3'-0" ABOVE ROOF. PROVIDE MANUFACTURER APPROVED ROOF PENETRATION ASSEMBLY.
 - MAINTAIN CLEARANCE TO COMBUSTIBLES PER WRITTEN INSTRUCTIONS OF APPROVED VENT MANUFACTURER.
 - INSTALL REMOTE MECHANICAL VOLUME DAMPER ADJUSTER IN CLOSET 208 AND CLOSET 213 WHERE SHOWN.
 - OFFSET DUCT MAIN AS REQUIRED TO RUN THRU TRUSS OPENINGS.
 - LOUVER BY OTHERS.

C1
 MECHANICAL PLAN ~ SECOND FLOOR
 3/16" = 1'-0"

REGISTERS - GRILLES - DIFFUSERS (RGD) SCHEDULE

TAG	PRICE MODEL	TYPE	NECK SIZE	FACE SIZE	CFM RANGE	MAX TOTAL P.D. (IN W.C.)	MAX INCH LEVEL	BORDER TYPE	BLOW	NOTES
S-1	SCD	SO. CEILING SUPPLY DIFFUSER	6" DIA	12" X 12"	0-150	0.07"	16	SURFACE	4-WAY	
S-2	SCD	SO. CEILING SUPPLY DIFFUSER	8" DIA	24" X 24"	151-275	0.07"	19	LAY-IN	4-WAY	
S-3	SCD	SO. CEILING SUPPLY DIFFUSER	10" DIA	24" X 24"	276-450	0.07"	22	LAY-IN	4-WAY	
S-4	520D	STEEL DOUBLE DEF. SUPPLY REGISTER	10" X 6"	10" X 6"	181-240	0.10"	23	SURFACE MT.	ADJUSTABLE	
S-5	LBP	LINEAR BAR GRILLES 30 DEG BLADES	2" X 7 1/2"	4" X 7 1/2"	280	0.09"	18	SURFACE MT.	ADJUSTABLE	750 (3/4") BORDER
R-1	550	STEEL RETURN GRILLE, 3/4" SPACING, 35 DEG VANES	8" X 8"	8" X 8"	0-170	0.05"	23	SURFACE MT.		
R-2	550	STEEL RETURN GRILLE, 3/4" SPACING, 35 DEG VANES	12" X 12"	12" X 12"	171-440	0.05"	27	LAY-IN		
R-3	550	STEEL RETURN GRILLE, 3/4" SPACING, 35 DEG VANES	22" X 22"	22" X 22"	551-940	0.02"	31	LAY-IN		
R-4	550	STEEL RETURN GRILLE, 3/4" SPACING, 35 DEG VANES	46" X 22"	46" X 22"	941-2000	0.02"	31	SURFACE MT.		
R-5	550	STEEL RETURN GRILLE, 3/4" SPACING, 35 DEG VANES	46" X 22"	46" X 22"	941-2000	0.02"	31	SURFACE MT.		
R-6		ARCHITECTURAL GRILLE		54" X 30"	1120	0.10"	25	SURFACE MT.		GRILLE BY OTHERS
R-7	630	ALUM. RETURN GRILLE, 3/4" SPACING, 35 DEG VANES	8" X 8"	8" X 8"	0-170	0.05"	23	SURFACE MT.		
R-8	630	ALUM. RETURN GRILLE, 3/4" SPACING, 35 DEG VANES	12" X 12"	12" X 12"	171-440	0.05"	27	SURFACE MT.		

NOTE 1. BLOW DIRECTION AS SHOWN ON THE PLANS. 1-WAY, 2-WAY, 3-WAY, OR 4-WAY. TYPICAL 4-WAY SHOWN BELOW

A1
 NONE

SINGLE DUCT AIR TERMINAL SCHEDULE

TAG	SERVES	Trane Model No.	INLET SIZE	CFM HEATING	CFM RANGE MAX	OUTLET SIZE	MAX RAD. & DISCH. IN.	A.P.D. AT MAX COOLING	MBH	GPM	MAX WPD	EWI	LWT	EAT LAT	ROWS	RUNOUT SIZE	
VAV 1-1	MECH 001	VCWF06	6	200	350	400	10" X 8"	30	16.3	0.7	0.1	180	134	55	98	2	1 1/2"
VAV 1-2	CONFERENCE 107	VCWF12	12	500	900	14" X 12"	30	0.22"	23.6	0.9	0.1	180	128	55	98	2	1 1/2"
VAV 1-3	LOBBY 101	VCWF05	5	150	150	10" X 8"	30	0.04"	6.0	0.5	0.5	180	157	55	110	1	1 1/2"
VAV 1-4	LOBBY 104/CONFERENCE 105	VCWF10	10	300	350	11" X 10"	30	0.16"	17.5	0.6	0.1	180	124	55	100	2	1 1/2"
VAV 1-5	LOUNGE 201	VCWF05	5	150	150	10" X 8"	30	0.04"	8.0	0.5	0.5	180	152	55	98	1	1 1/2"
VAV 1-6	ADMIN 211	VCWF05	5	175	175	10" X 8"	30	0.10"	7.5	0.5	0.5	180	150	55	95	1	1 1/2"
VAV 1-7	PRESIDENT 215 / CONF 214	VCWF12	12	425	450	17" X 14"	30	0.12"	22.0	1.5	1.3	180	155	55	100	1	3/4"
VAV 1-8	PROVOST 209 / ADMIN 207	VCWF10	10	330	330	14" X 12"	30	0.10"	18.0	1.3	1.3	180	155	55	100	1	3/4"
VAV 1-9	OFFICE 206 / LOBBY 204	VCWF08	8	250	250	11" X 10"	30	0.12"	10.0	0.5	0.7	180	140	55	92	1	1 1/2"
VAV 3-1	RECEPTION 110	VCCF14	14	1200	---	15" X 18"	30	0.34"	---	---	---	---	---	---	---	---	
VAV 3-2	LOBBY 108	VCCF10	10	200	---	14" X 12"	30	0.34"	---	---	---	---	---	---	---	---	
VAV R-1	AHU-1 RETURN TO ERU	VCCF10	10	300	---	14" X 12"	30	0.34"	---	---	---	---	---	---	---	---	
VAV R-2	MEN 006 WOMEN 007	VCCF10	10	800	---	14" X 12"	30	0.34"	---	---	---	---	---	---	---	---	

NOTES:
 1. VAV BOX MANUFACTURER: EXX, AIRFLOW PICKUP, AND HW COIL.
 2. CONTROL CONTRACTOR: DAMPER ACTUATOR, VALVE ACTUATOR, TRANSFORMERS, AND LOW VOLTAGE WIRING.
 3. ELECTRICAL CONTRACTOR: LINE VOLTAGE SIDE OF TRANSFORMERS.