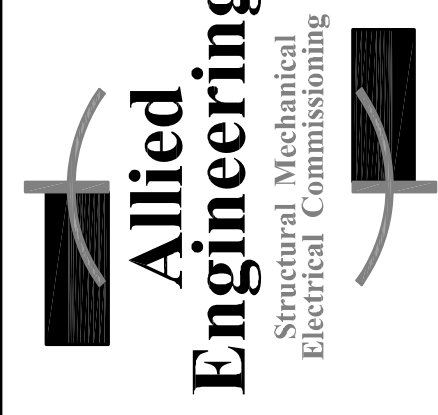
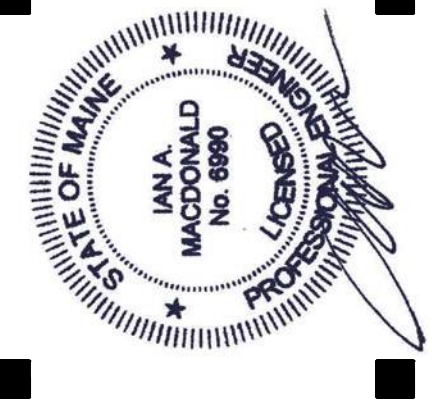


65 NEWBURY STREET
PORTLAND, ME 04101
207.761.9000
info@portcityarch.com
WWW.PORTCITYARCH.COM



Allied Engineering
Structural Mechanical
Electrical Commissioning

160 Veranda Street
Portland, Maine 04103
T: 207.221.2260
F: 207.221.2266
Web: www.allied-eng.com

PROJECT NO: 14088
DATE: 8/7/2015

CONSTRUCTION DOCUMENT SET FOR CONSTRUCTION

No.	Date	Description
1	8/7/2015	Issue for Construction
2		
3		
4		
5		

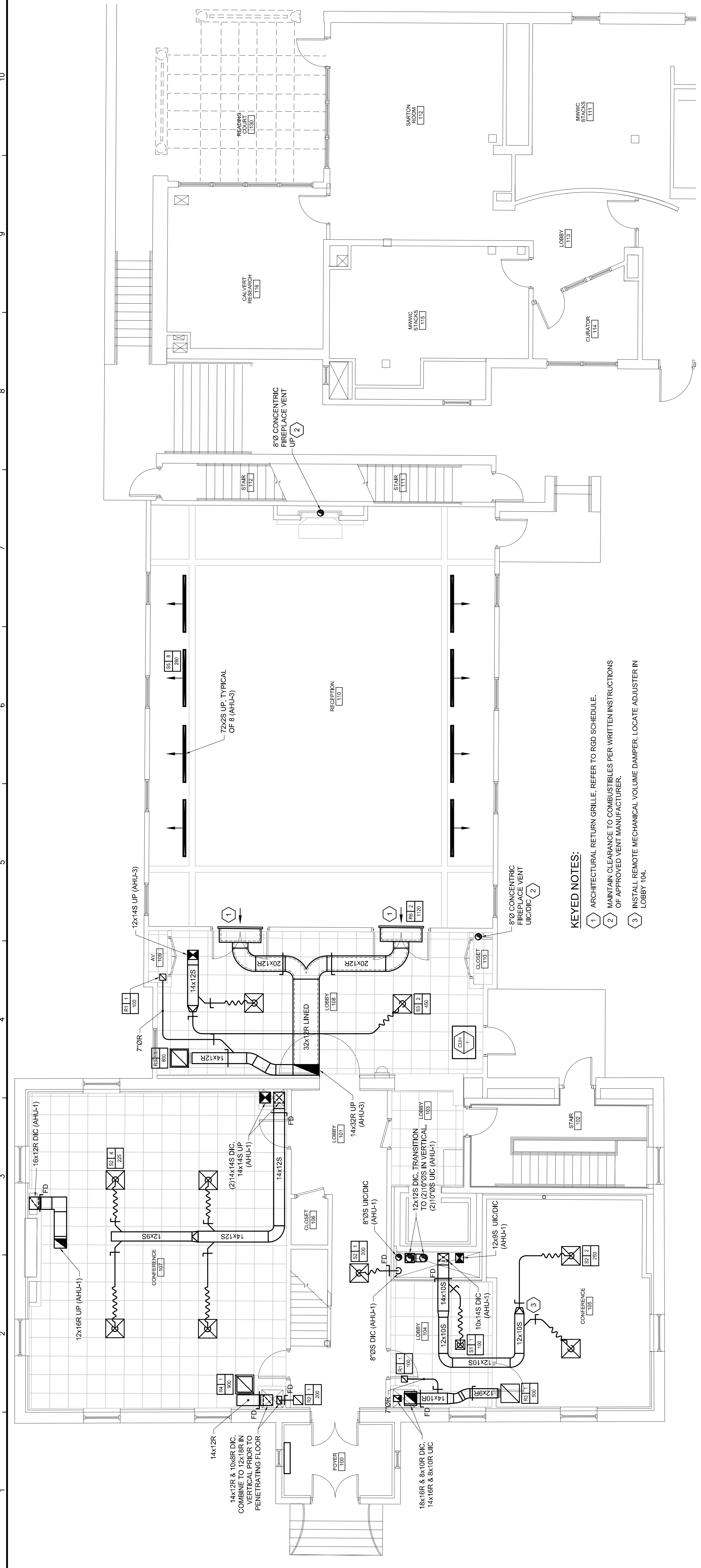
UNIVERSITY OF NEW ENGLAND
PORTLAND, MAINE

ALUMNI HALL RENOVATION

MECHANICAL PLAN ~ FIRST FLOOR

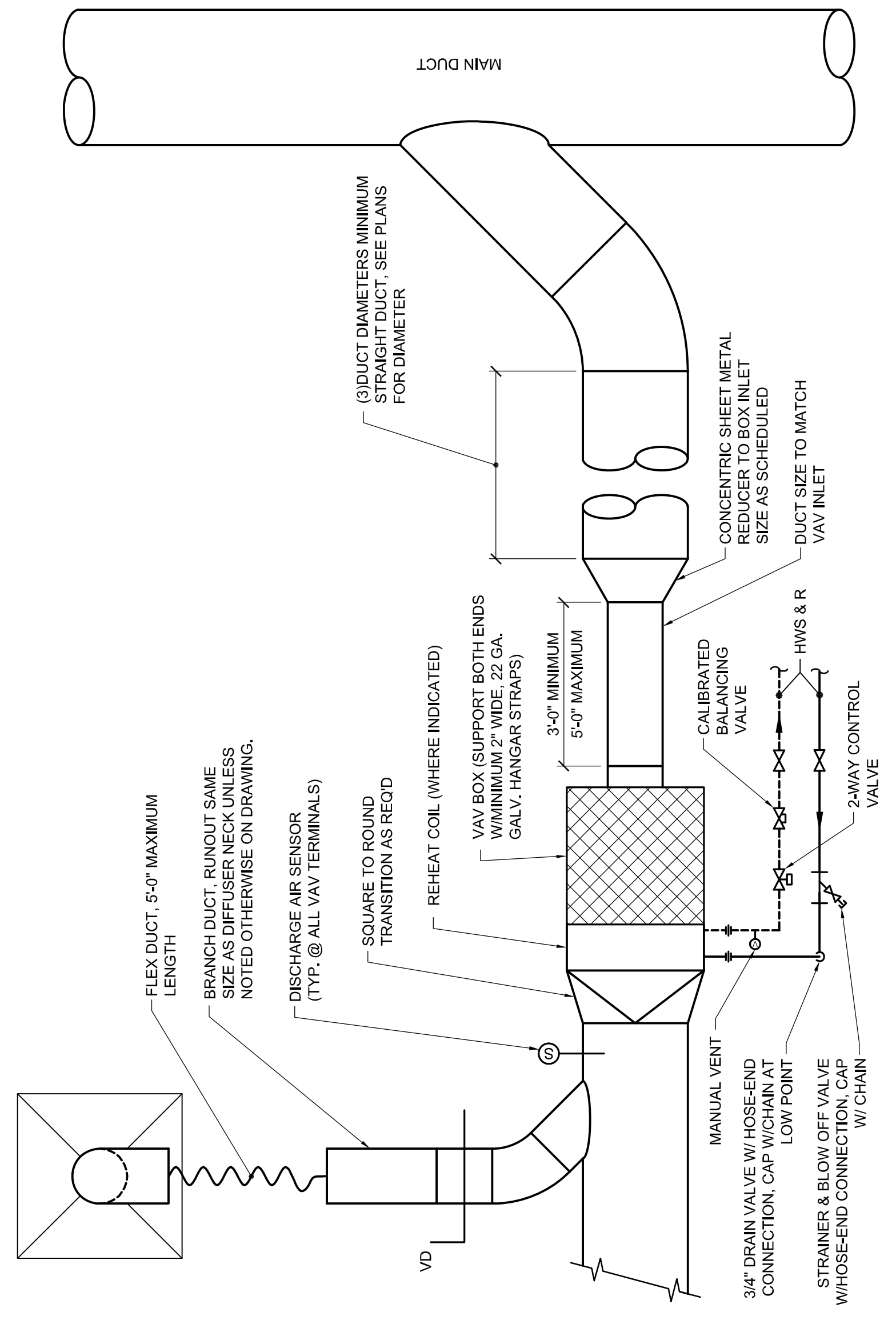
Project Number: 14525
Date: August 7, 2015
Drawn by: [Signature]
Checked by: [Signature]

MH1.2
Scale: AS NOTED



- KEYED NOTES:**
- ARCHITECTURAL RETURN GRILLE. REFER TO RGD SCHEDULE.
 - MAINTAIN CLEARANCE TO COMBUSTIBLES PER WRITTEN INSTRUCTIONS OF APPROVED VENT MANUFACTURER.
 - INSTALL REMOTE MECHANICAL VOLUME DAMPER, LOCATE ADJUSTER IN LOBBY 104.

C1 MECHANICAL PLAN ~ FIRST FLOOR
3/16" = 1'-0"



A7 DETAIL ~ VAV BOX SCHEMATIC
NOT TO SCALE

PUMP SCHEDULE

TAG	SYSTEM	MFR.	MODEL	SUCTION DISCH.	TYPE	PLUMBED FLUID			PERFORMANCE			ELECTRICAL			ELECTRICAL COORDINATION			
						GPM	HEAD	RPM	NPSH	BHP	NOL.	MOTOR	VOLTS/PH	VFD FLRN.	DISC SWITCH	FURN.	BY	BY
P-1	HEATING	PATTERSON	V1.5A7A-CC	1.5 X 1.5	VERTICAL IN LINE	30% PG	40	25	1750	—	0.62	0.78	1	208/3	PUMP MFG	DIV 26		
P-2	HEATING	PATTERSON	V1.5A7A-CC	1.5 X 1.5	VERTICAL IN LINE	30% PG	40	25	1750	—	0.62	0.78	1	208/3	PUMP MFG	DIV 26		
P-3	COOLING	PATTERSON	V2C7A-CC	2 X 2	VERTICAL IN LINE	30% PG	65	45	1750	—	1.3	2.02	2	208/3	PUMP MFG	DIV 26		

NOTES: CWH AND HW ARE 30% PG
Integral VFD: ATV212
Mechanical Seals: Carbon v/Silicon, Cartridge

CABINET UNIT HEATER & UNIT HEATER SCHEDULE

TAG	MFR.-MODEL	SIZE	LOCATION	TYPE	EXPOSED			DEPTH	WEIGHT	MBH	CFM	EAT. (DEG.-F)	LAT. (DEG.-F)	GPM	FLUID	EWT	LWT	MOTOR HP	ELECT	MAX WPD	PIPE RUNOUT SIZE	NOTES
					FACE WIDTH	FACE HEIGHT	FACE DEPTH															
CUH-1	TRANE FFE	200	LOBBY 105	RECESSED CEILING W/LOWERS	2'-11 1/2"	2'-4"	10 3/8"	75 lbs	19.0	314	70	—	1.3	—	SEE NOTE 2	180.0	150.0	84W	120-1-60	7	3/4"	
CUH-2	TRANE FFJ	300	STAIR 002-102	VERTICAL WALL SLOPE TOP	2'-10"	2'-4"	10 3/8"	97 lbs	18.3	282	70	—	1.3	—	SEE NOTE 2	180.0	150.0	70W	120-1-60	7	3/4"	
UH-1	TRANE S	S-A18	MECH 001	HORIZONTAL UH	1'-4"	1'-6"	9.5"	30 lbs	15.0	210	70	—	1.3	—	SEE NOTE 2	180.0	150.0	16 W	120-1-60	3	3/4"	
UH-2	TRANE S	S-A25	MECH 218	HORIZONTAL UH	1'-4"	1'-6"	9.5"	30 lbs	20.0	460	70	—	2.5	—	SEE NOTE 2	180.0	150.0	25 W	120-1-60	3	3/4"	

NOTES:
1. POWER WIRING TO UNIT HEATER BY DIV 26. ALL LOW VOLTAGE CONTROL WIRING, THERMOSTAT, RELAYS, AND TRANSFORMERS BY DIV. 23.
2. BASED ON 30% PROPYLENE GLYCOL
3. PROVIDE OPTIONAL UNIT MOUNTED DISCONNECT SWITCH.

A1 MECHANICAL SCHEDULES
NONE