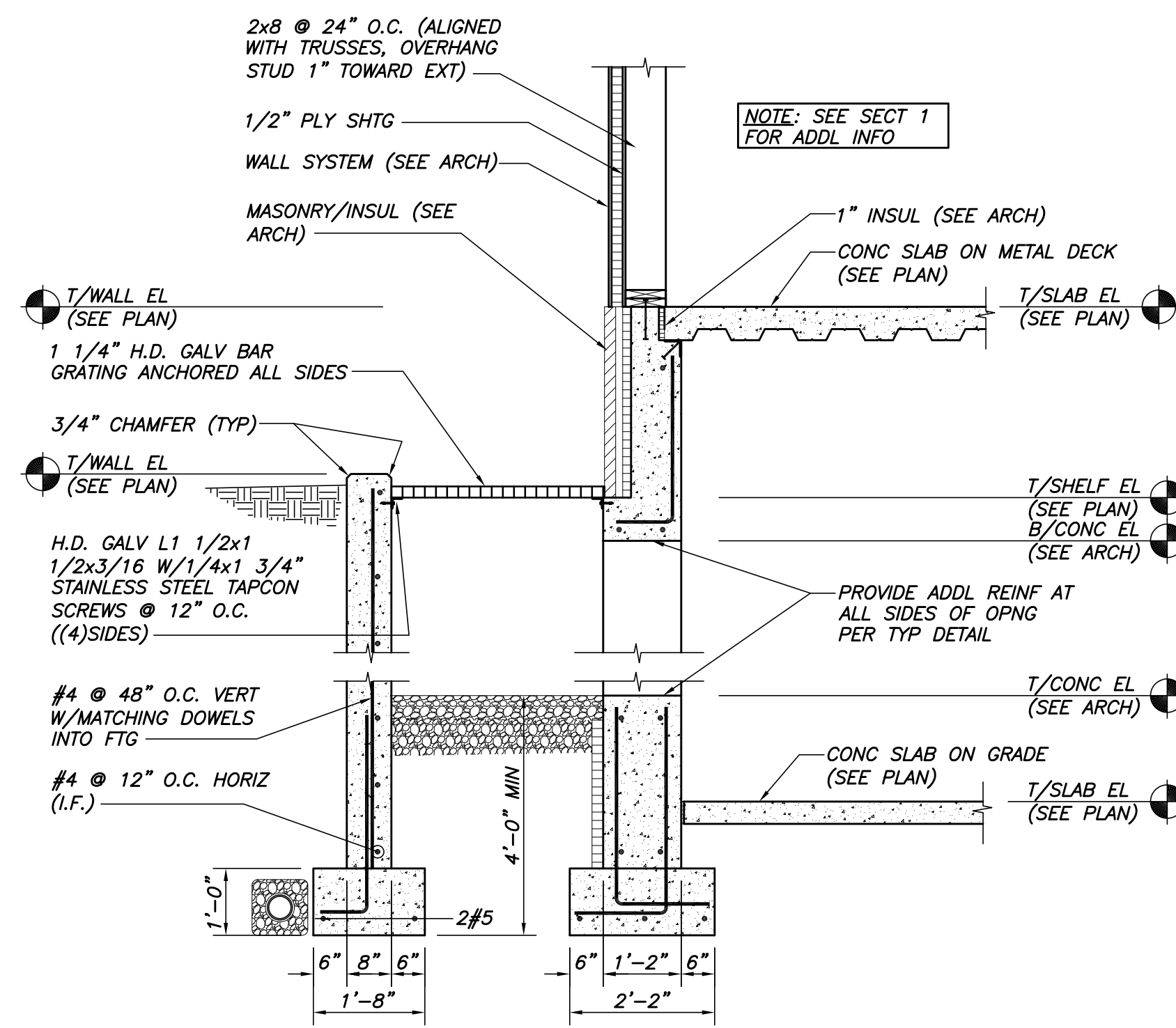
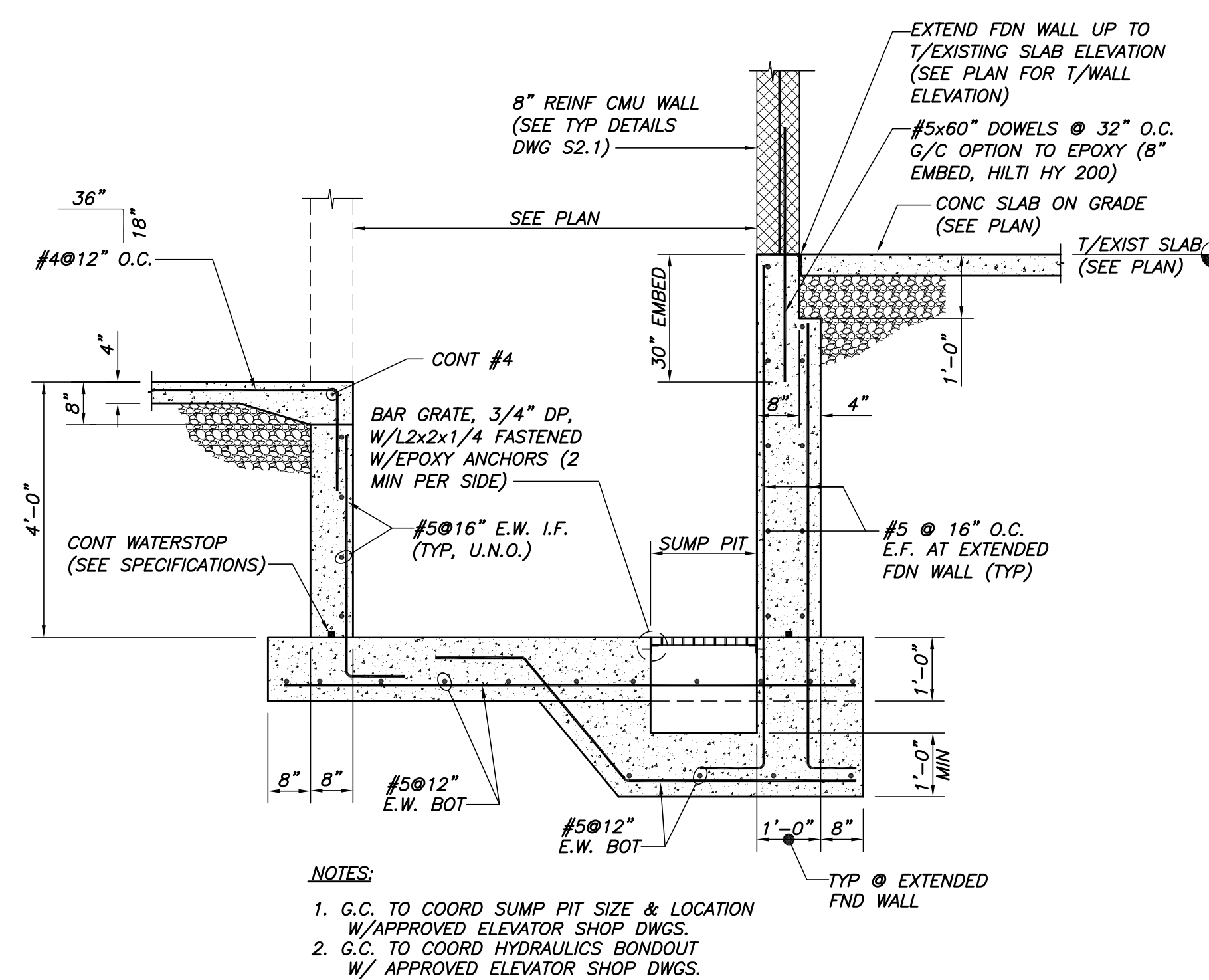


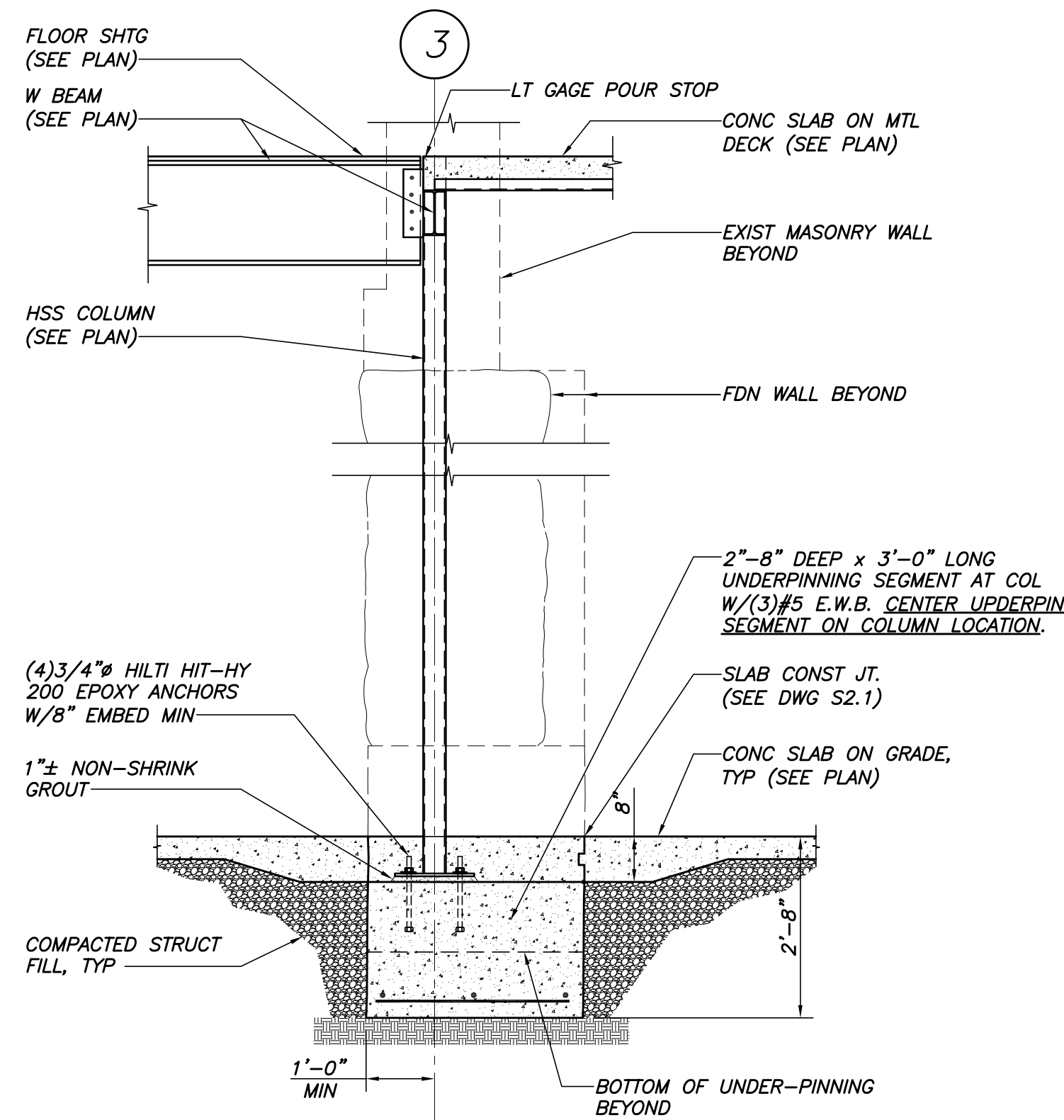
SECTION 1
1/2"=1'-0"



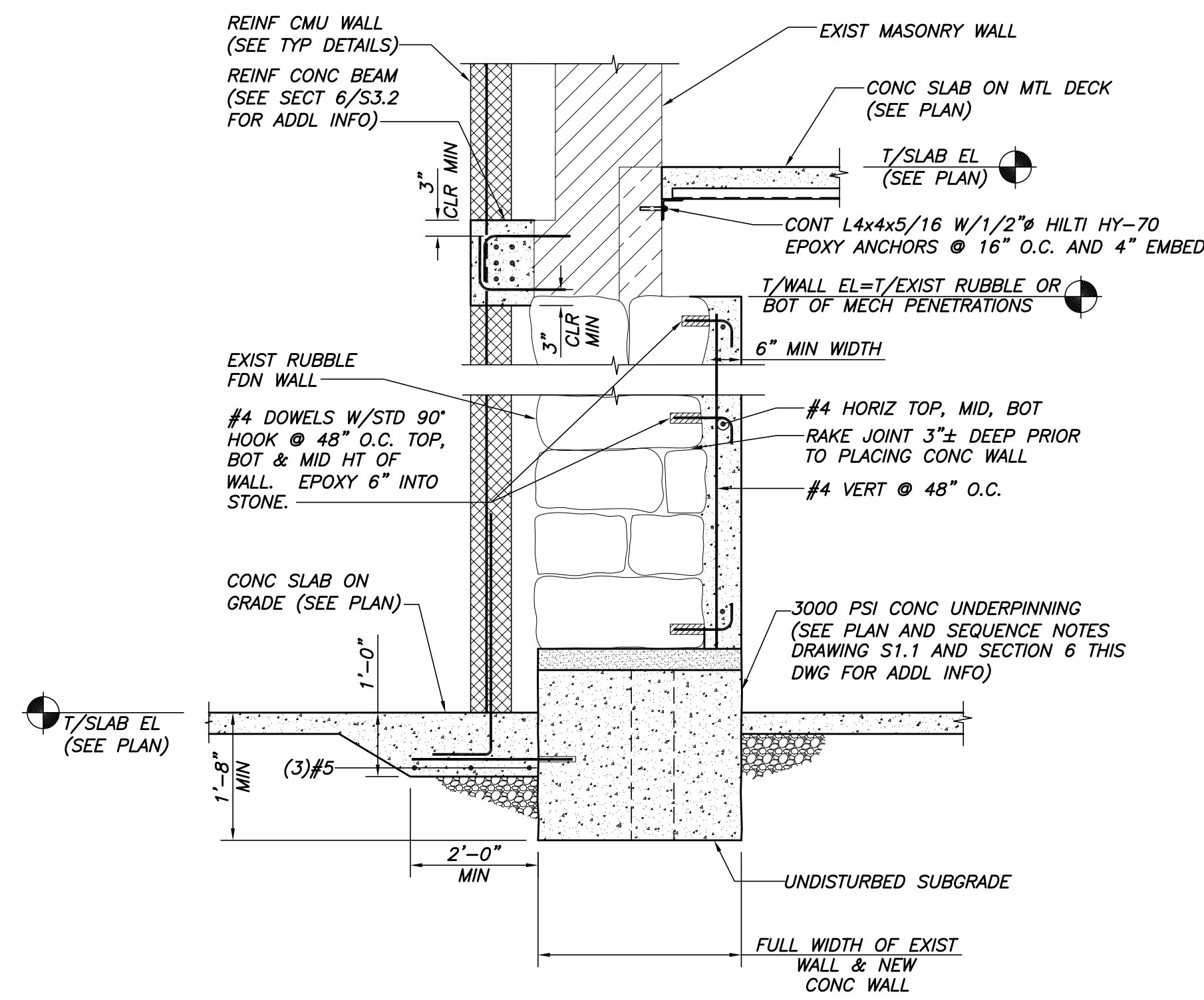
SECTION 2
1/2"=1'-0"



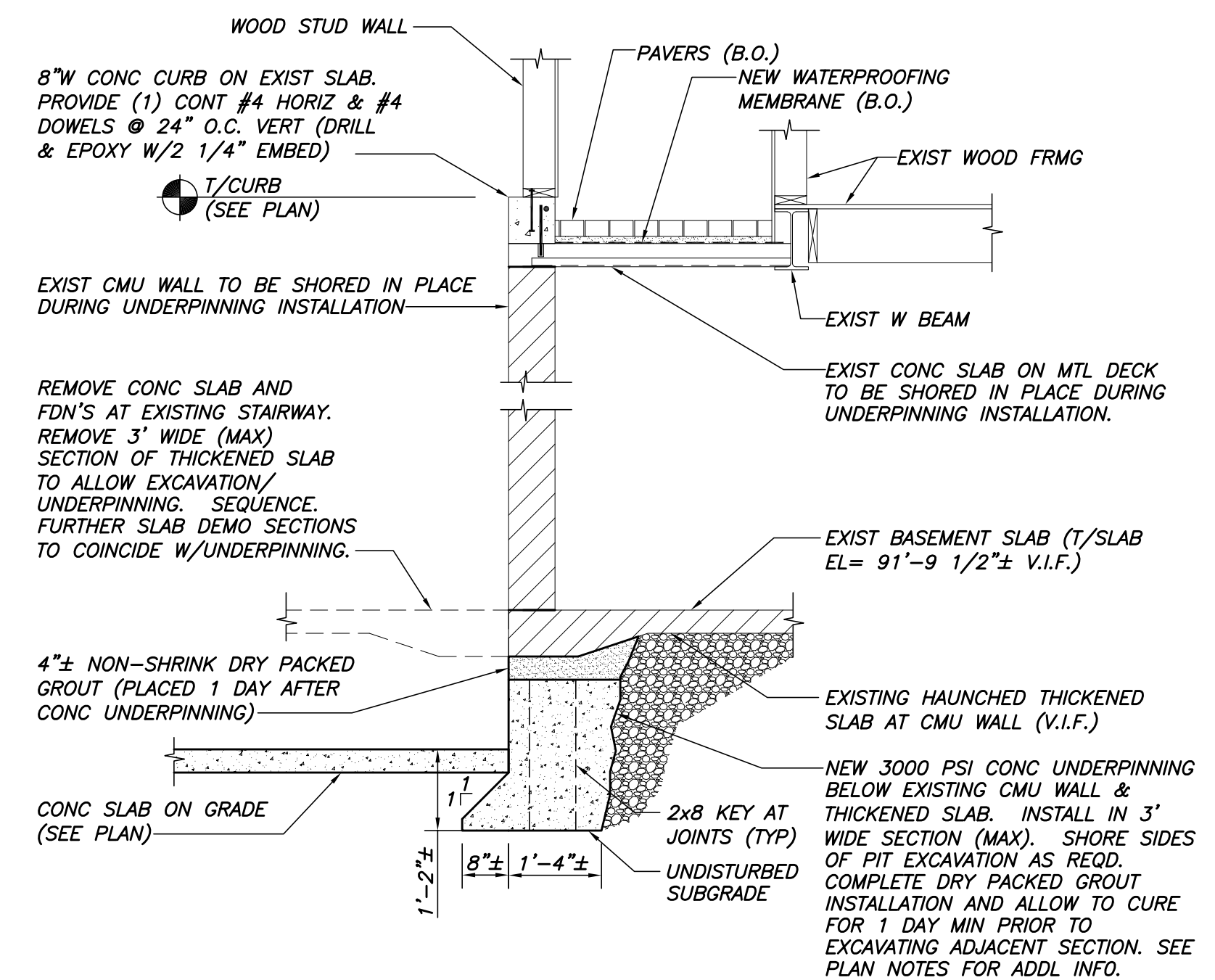
SECTION 3
1/2"=1'-0"



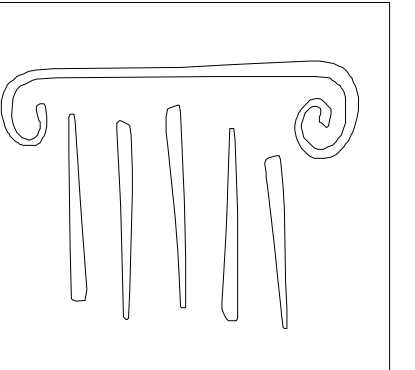
SECTION 4
1/2"=1'-0"



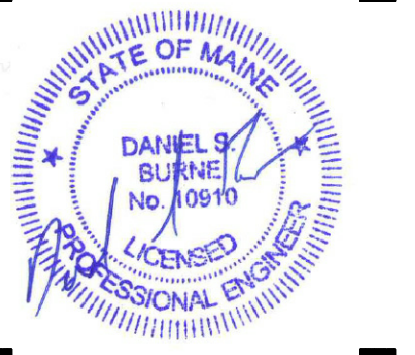
SECTION 5
1/2"=1'-0"



SECTION 6
1/2"=1'-0"



65 NEWBURY STREET
PORTLAND, ME 04101
207.761.9000
info@portcityarch.com
WWW.PORTCITYARCH.COM



Allied Engineering
Structural Mechanical Electrical Commissioning



REVISIONS		
No.	Description	Date

PERMIT SET

UNIVERSITY OF
NEW ENGLAND
PORTLAND, MAINE
ALUMNI HALL
RENOVATION
FOUNDATION
SECTIONS &
DETAILS

Project Number 3450
Date May 1, 2015
Drawn by MSK
Checked by CGW

S2.2
Scale AS NOTED