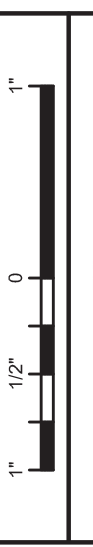


65 NEWBURY STREET
PORTLAND, ME 04101
207.761.9000
info@portcityarch.com
WWW.PORTCITYARCH.COM



160 Veranda Street
Portland, Maine 04103
T: 207.221.2260
F: 207.221.2266
Web: www.allied-eng.com

ALLIED PROJECT No. 14088
Original Scale: 1" = 12'



REVISONS	
No.	Date

PERMIT SET

UNIVERSITY OF
NEW ENGLAND
PORTLAND, MAINE

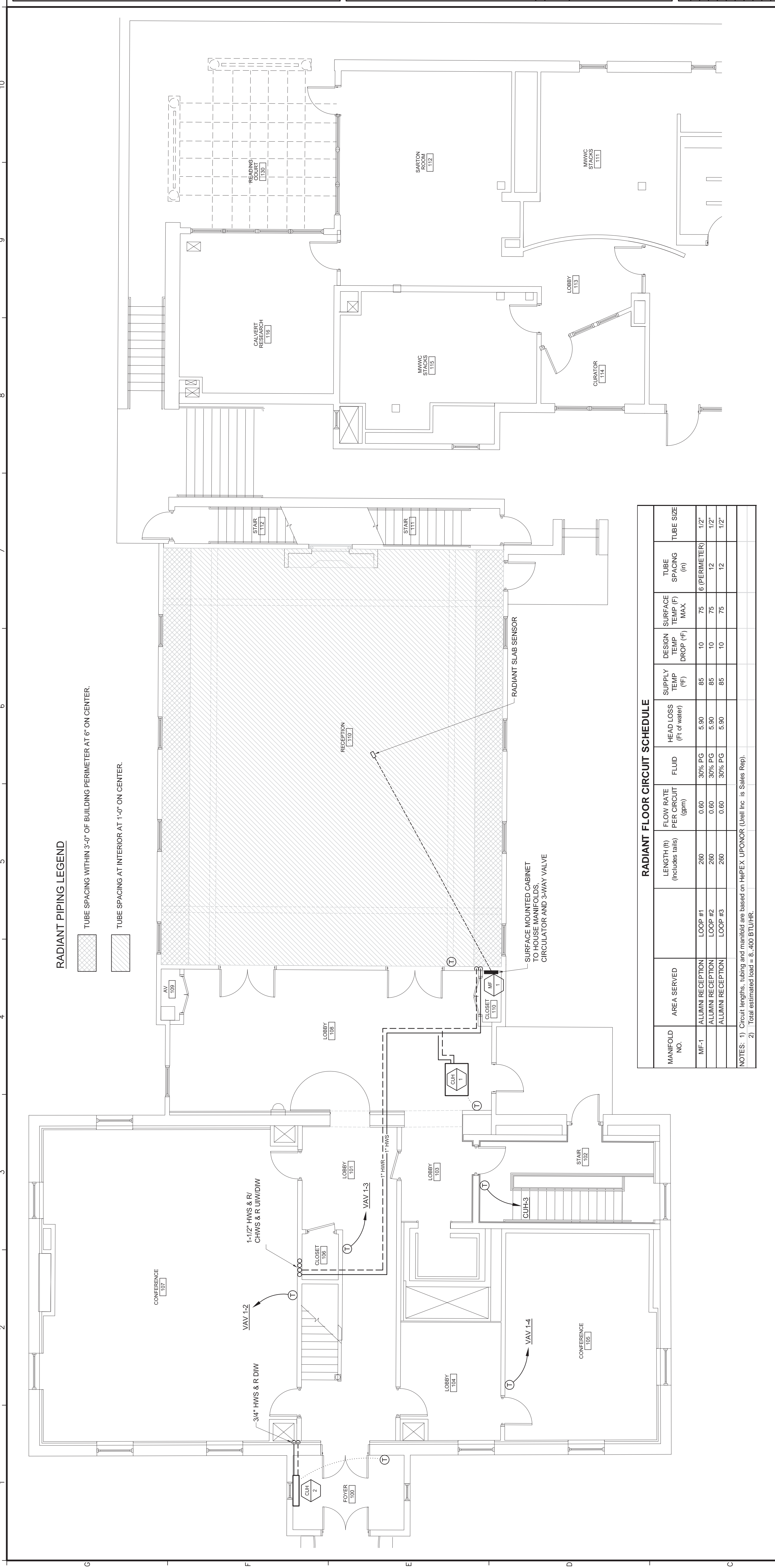
ALUMNI HALL
RENOVATION

MECHANICAL PIPING
PLAN ~ FIRST FLOOR

Project Number	14525
Date	May 3, 2015
Drawn by	REW
Checked by	HAG

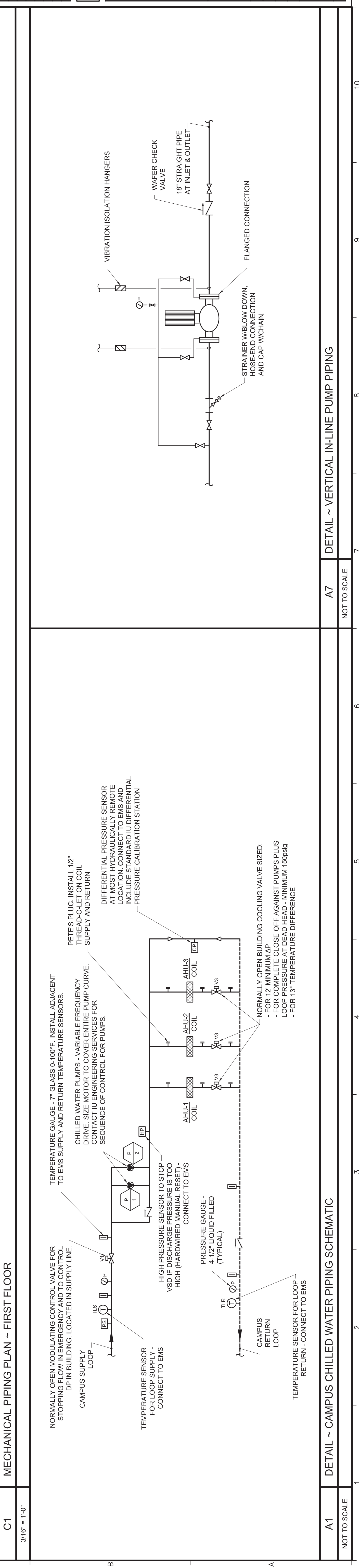
MP1.2

Scale: AS NOTED



RADIANT FLOOR CIRCUIT SCHEDULE									
MANIFOLD NO.	AREA SERVED	LENGTH (ft) (Includes tails)	FLOW RATE PER CIRCUIT (gpm)	FLUID	HEAD LOSS (Ft of water)	SUPPLY TEMP (°F)	DESIGN SURFACE TEMP (°F) DROP (°F) MAX.	TUBE SPACING (in)	TUBE SIZE
MF-1	ALUMNI RECEPTION LOOP #1	260	0.60	30% PG	5.90	85	10 75 6 (PERMETER)	12	1/2"
	ALUMNI RECEPTION LOOP #2	260	0.60	30% PG	5.90	85	10 75 12	12	1/2"
	ALUMNI RECEPTION LOOP #3	260	0.60	30% PG	5.90	85	10 75 12	12	1/2"

NOTES: 1) Circuit lengths, tubing and manifold are based on the PEEX UPONOR (Utilize Inc is Sales Rep).
2) Total estimated load = 6,400 BTU/HR.



C1 MECHANICAL PIPING PLAN ~ FIRST FLOOR
3/16" = 1'-0"

A1 DETAIL ~ CAMPUS CHILLED WATER PIPING SCHEMATIC
NOT TO SCALE

A7 DETAIL ~ VERTICAL IN-LINE PUMP PIPING
NOT TO SCALE