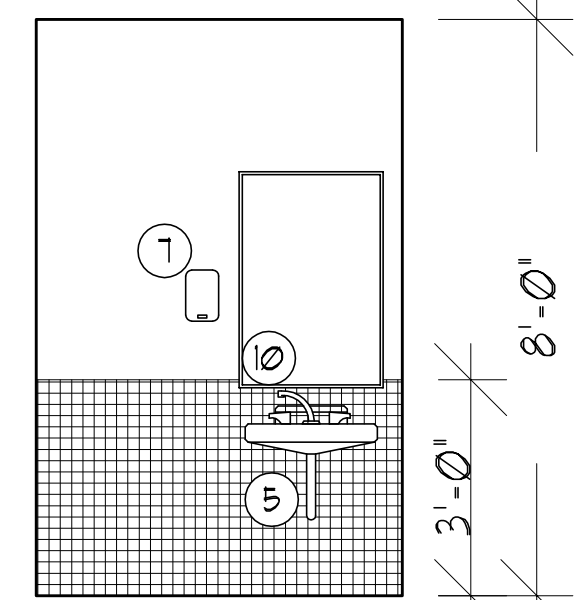
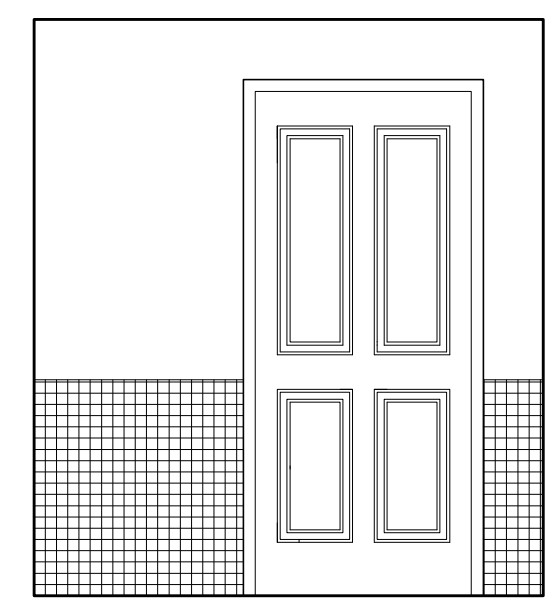
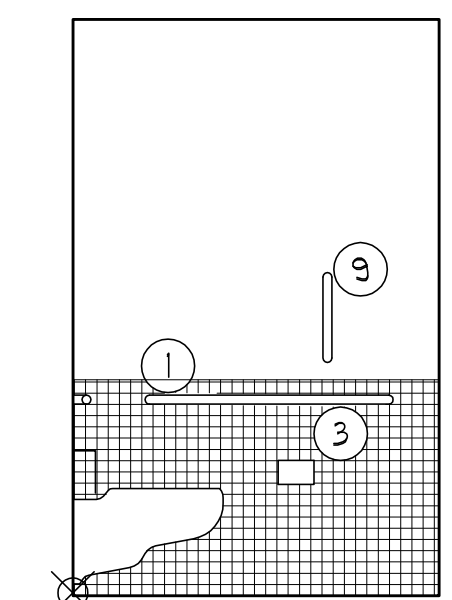
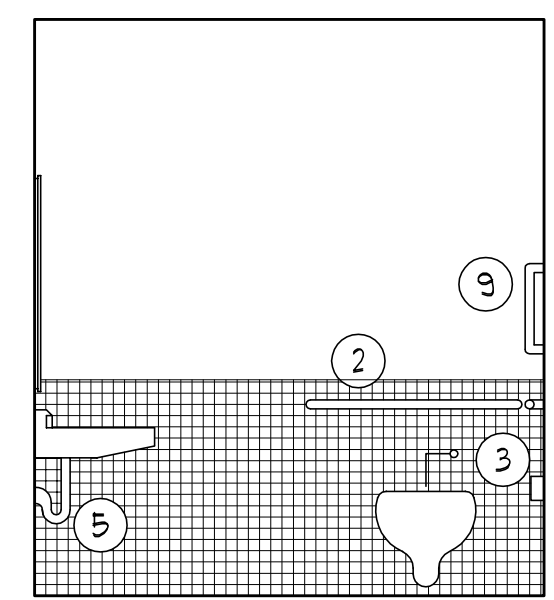
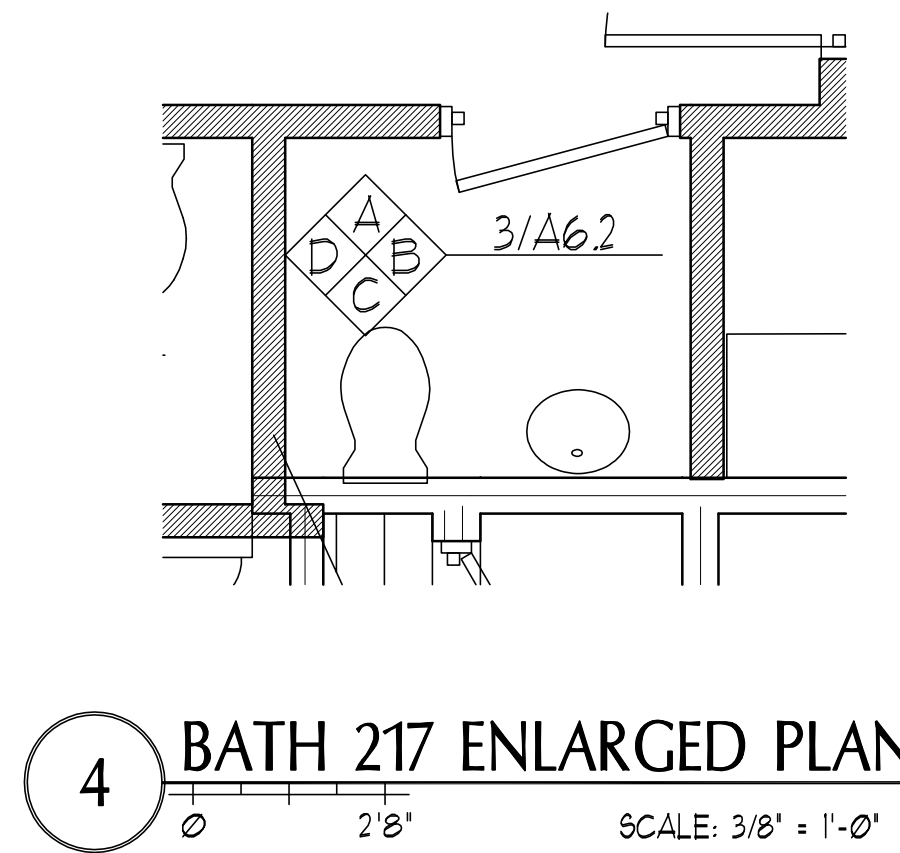


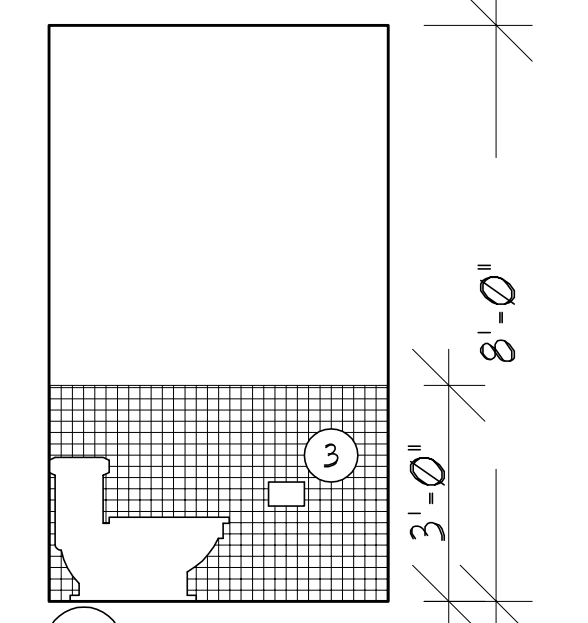
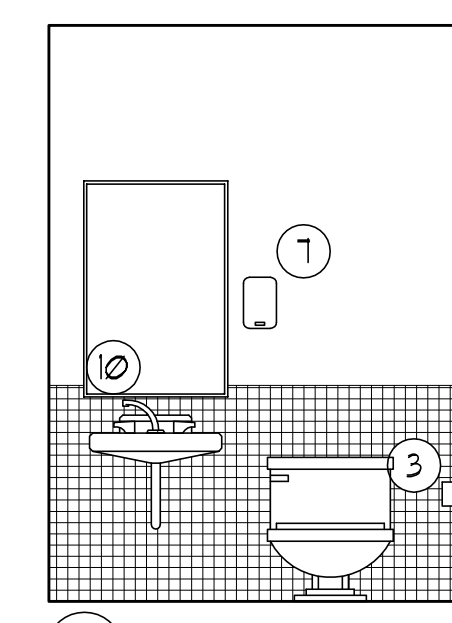
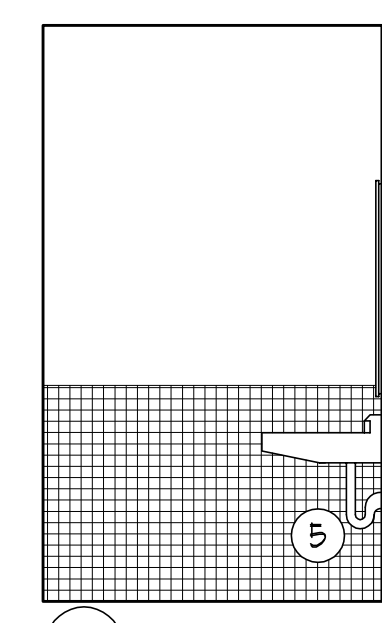
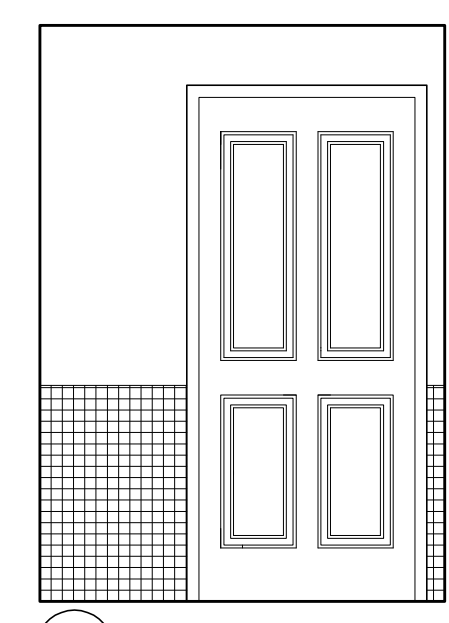
6 BATH 203 ENLARGED PLAN SCALE: 3/8" = 1'-0"



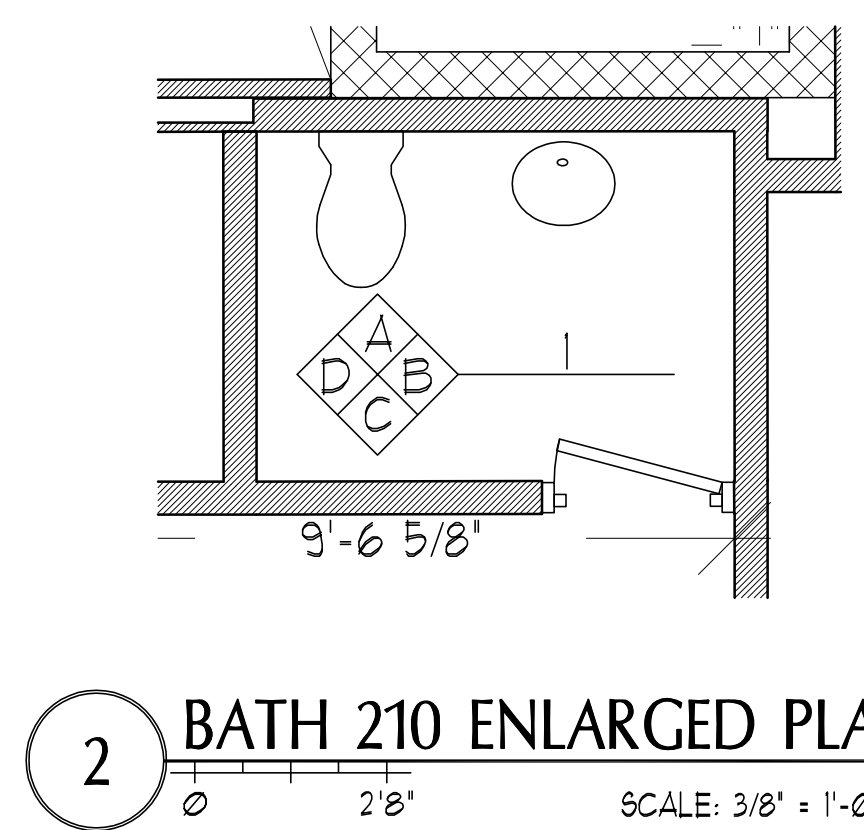
5 BATH 203 SCALE: 3/8" = 1'-0"



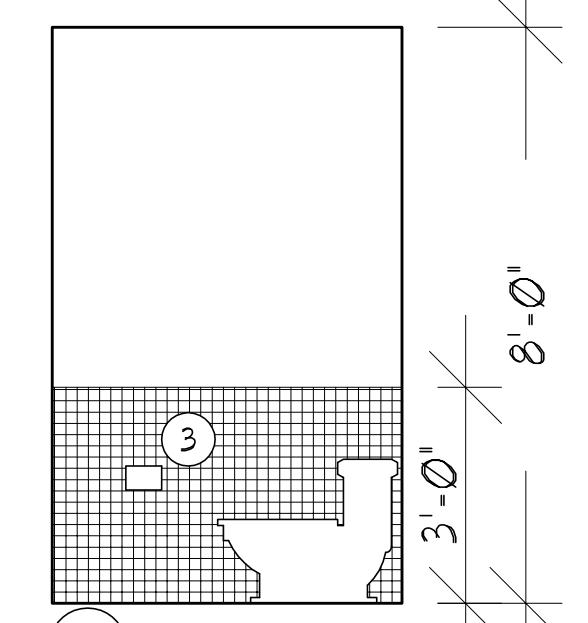
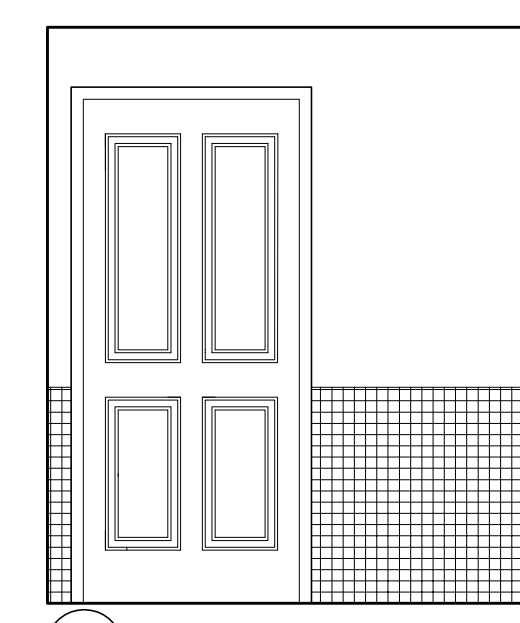
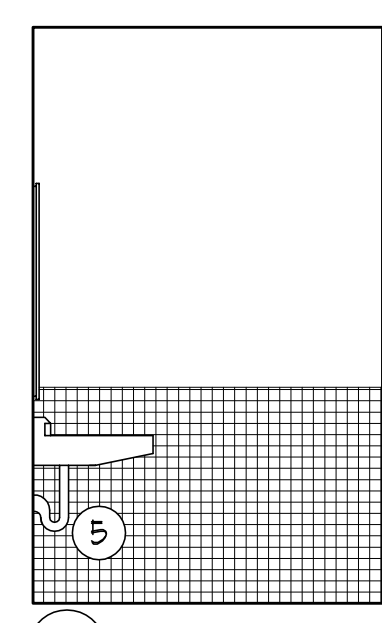
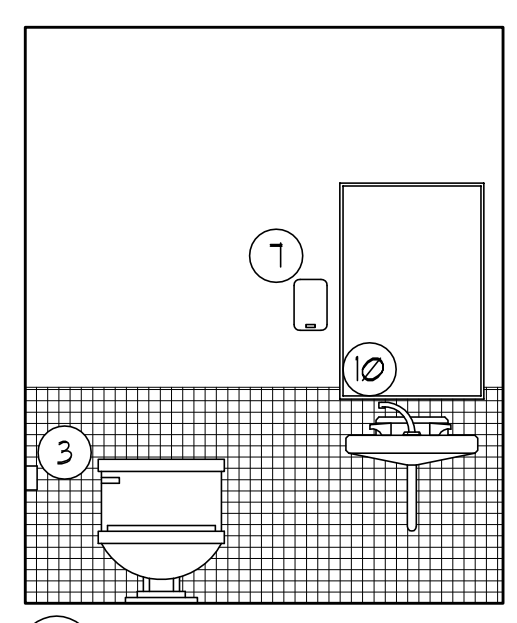
4 BATH 217 ENLARGED PLAN SCALE: 3/8" = 1'-0"



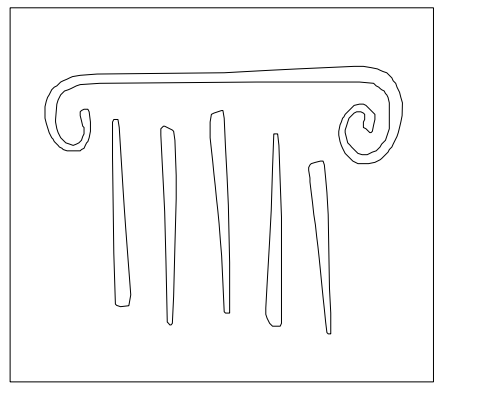
3 BATH 217 SCALE: 3/8" = 1'-0"



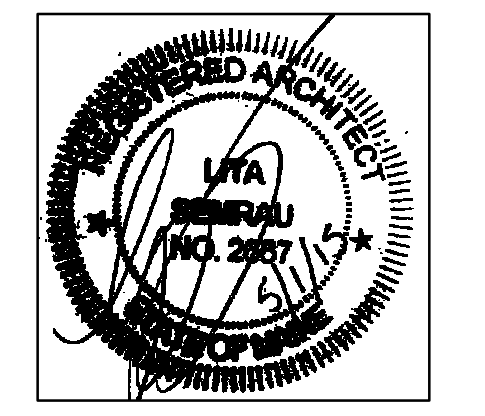
2 BATH 210 ENLARGED PLAN SCALE: 3/8" = 1'-0"



1 BATH 210 SCALE: 3/8" = 1'-0"



65 NEWBURY STREET  
 PORTLAND, ME 04101  
 207.761.9000  
 info@portcityarch.com  
 WWW.PORTCITYARCH.COM



**UNE**  
 UNIVERSITY OF  
 NEW ENGLAND

**Allied Engineering**  
 Structural Mechanical Electrical Commissioning

**CONSIGLI**  
 Est. 1905

**BECKER**  
 STRUCTURAL ENGINEERS

**PERMIT SET**

REVISIONS		
No.	Description	Date

UNIVERSITY OF  
 NEW ENGLAND  
 PORTLAND, MAINE

ALUMNI HALL  
 RENOVATION

**INTERIOR  
 ELEVATIONS**

Project Number 14525  
 Date May 02, 2015  
 Drawn by JP TS SM AR  
 Checked by LAS

**A6.2**  
 Scale AS NOTED