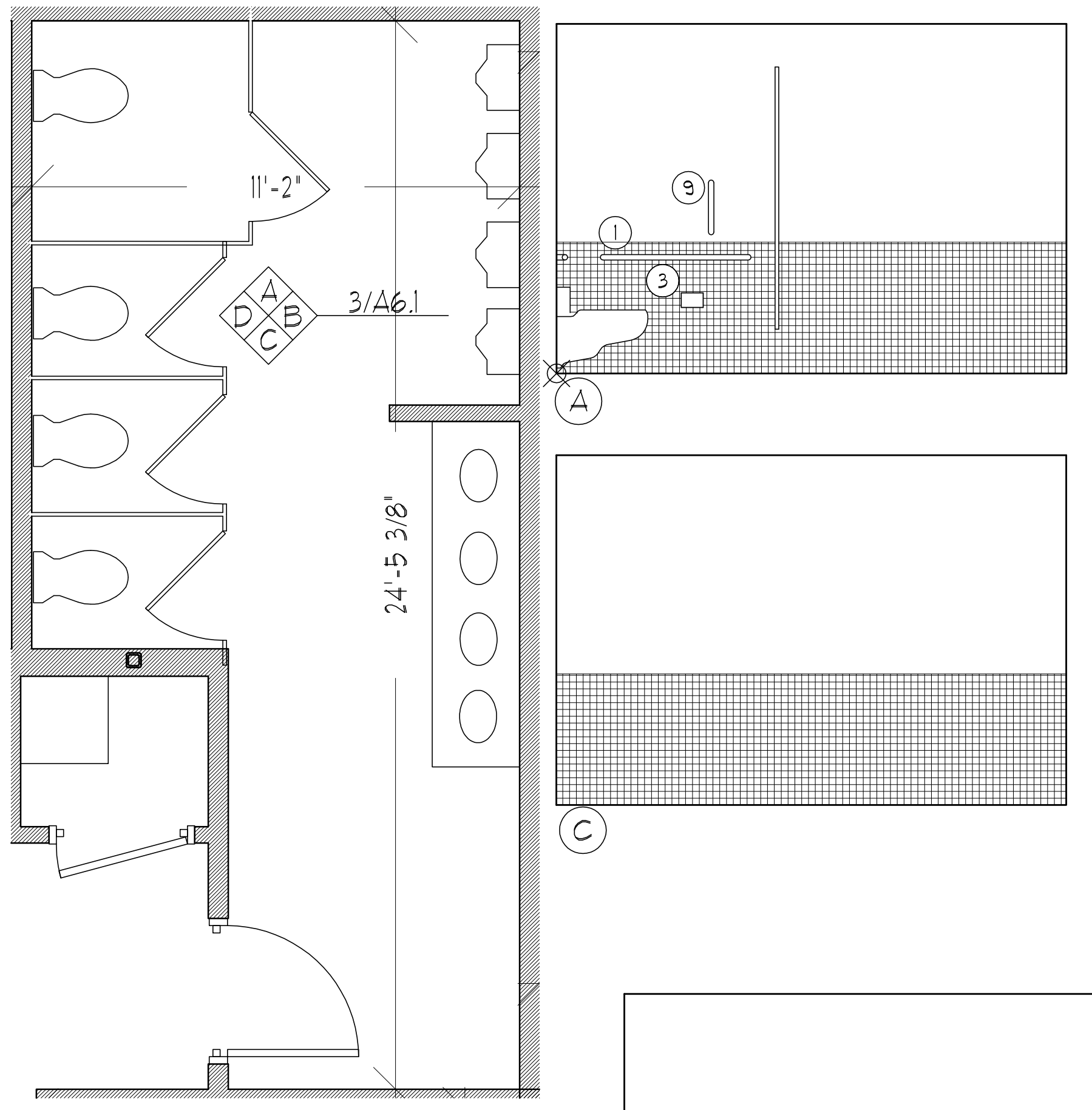
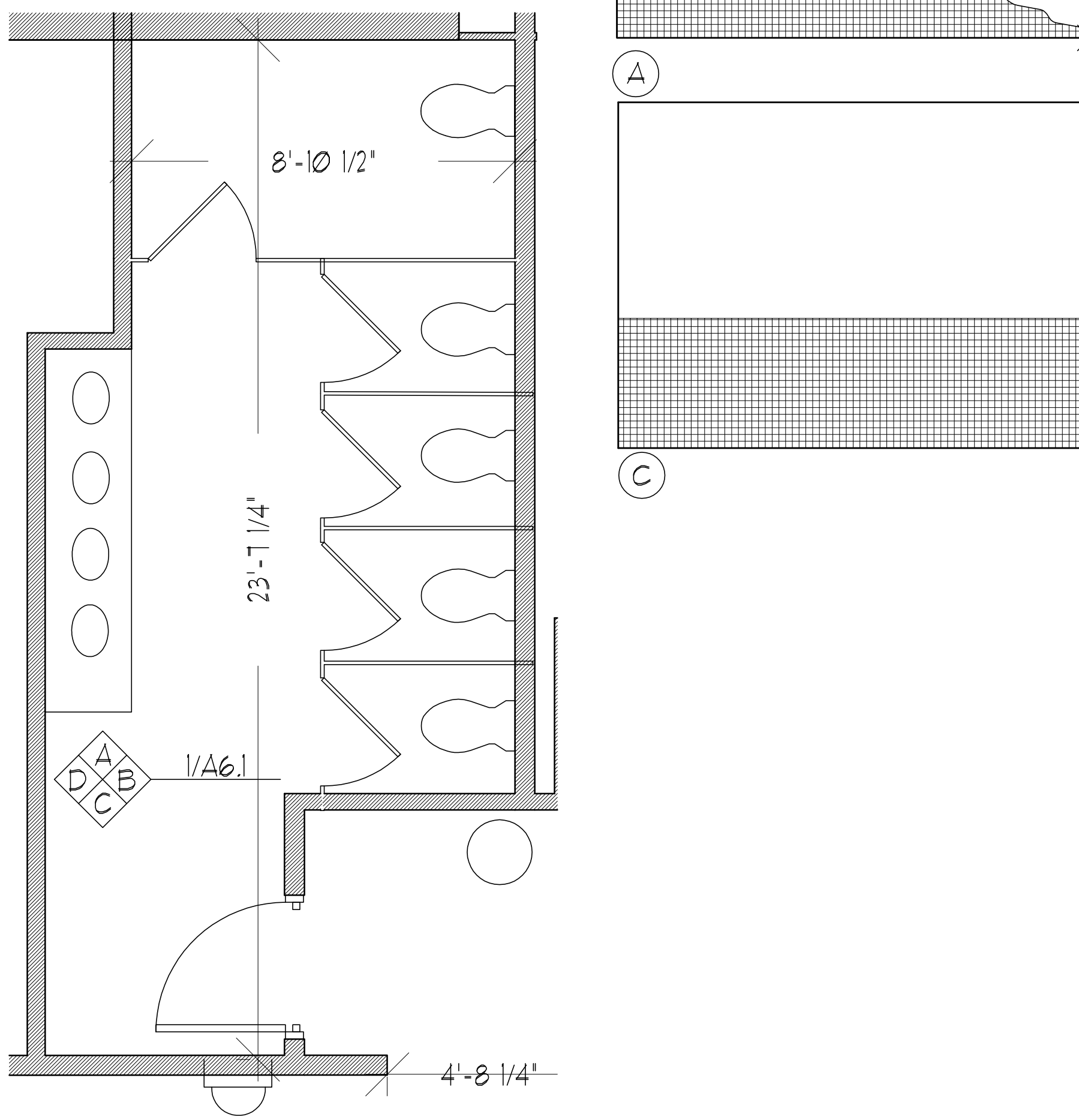


TYP BARRIER FREE REQUIREMENTS

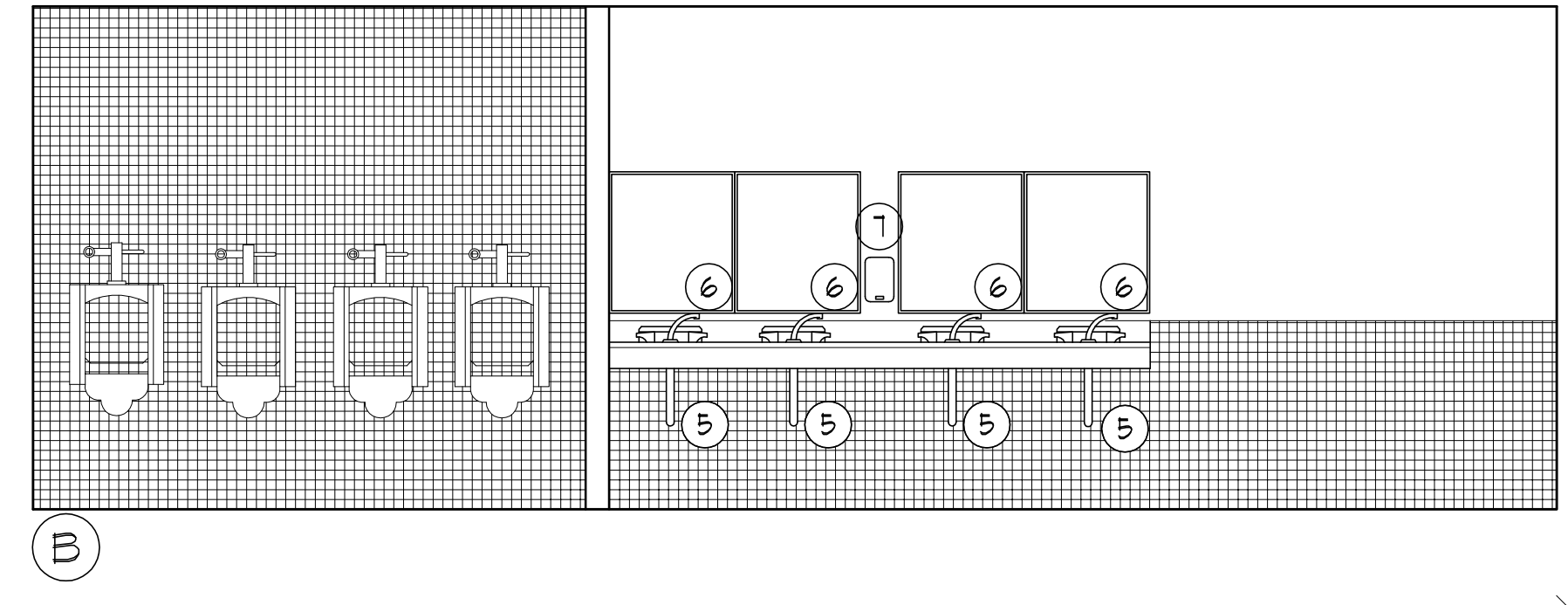
- LEGEND**
- ⊙ STANDARD MOUNTING HEIGHT
 - ⊕ BARRIER FREE ADULT MOUNTING HEIGHT
 - ⊖ FINISH FLOOR LINE
- NOTE**
1. MOUNT ALL FIXTURES AT STANDARD MOUNTING HEIGHT UNLESS INDICATED ON PLAN BY A & ⊕ SYMBOL. A & ⊕ SYMBOL AT ANY ROOM SHALL INCLUDE ONE OF ANY FIXTURE AND ACCESSORY WITHIN THE ROOM.
 2. ALL SINKS TO HAVE ADA LEVER HANDLES.
 3. WRAP ALL EXPOSED PIPES BELOW SINKS.



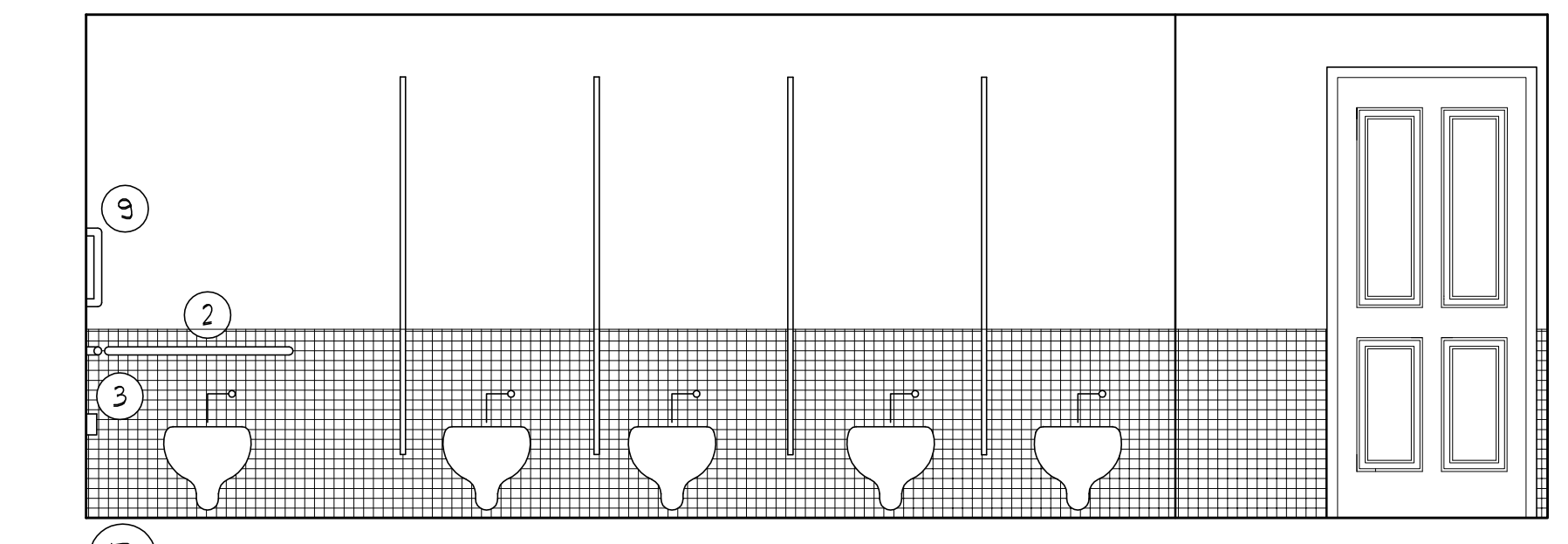
4 MENS BATH ENLARGED PLANS
SCALE: 3/8" = 1'-0"



2 WOMENS BATH ENLARGED PLANS
SCALE: 3/8" = 1'-0"

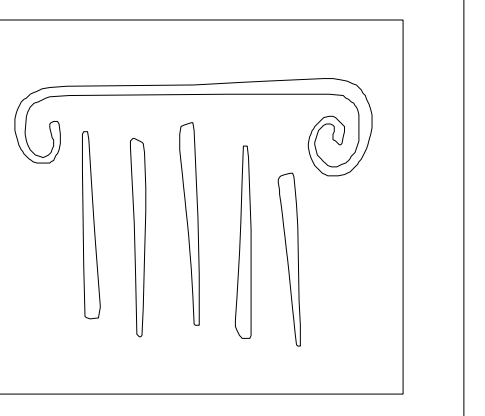


3 MENS RESTROOM ENLARGED
SCALE: 3/8" = 1'-0"

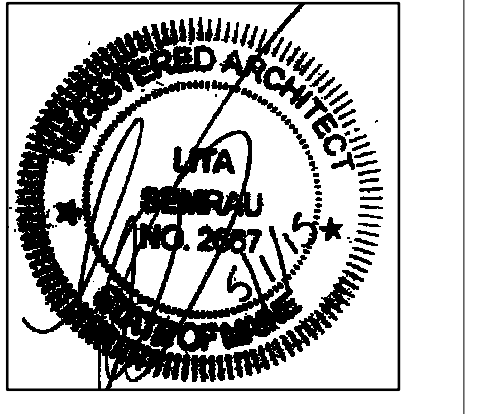


1 WOMENS BATH 007
SCALE: 3/8" = 1'-0"

BATHROOM ACCESSORIES SCHEDULE			
NUMBER	ITEM	MOUNTING HEIGHT	NOTES
①	3'-6" 1/2" DIA GRAB BAR	⊕ @ 2'-10" AFF	...
②	3'-0" 1/2" DIA GRAB BAR	⊕ @ 2'-10" AFF	...
③	TOILET PAPER DISPENSER	⊕ @ 20" AFF	FBO/BC
④	PAPER TOWEL DISPENSER	TOWELS @ 42" AFF	FBO/BC
⑤	UNDER LAV. PIPE GUARDS
⑥	MIRROR- 2'3" x 2'	BOTTOM @ 40" AFF	...
⑦	SOAP DISPENSER	...	FBO/BC
⑧	DOUBLE ROBE HOOK	TOP @ 48" AFF	...
⑨	1-3" 1/2" DIA GRAB BAR	⊕ @ 3'-4" AFF	...
⑩	MIRROR- 3'x2'	BOTTOM @ 40" AFF	...



65 NEWBURY STREET
PORTLAND, ME 04101
207.761.9000
info@portcityarch.com
WWW.PORTCITYARCH.COM



UNE
UNIVERSITY OF
NEW ENGLAND

Allied Engineering
Structural Mechanical Electrical Commissioning

CONSIGLI
Est. 1905

BECKER
STRUCTURAL ENGINEERS

PERMIT SET

REVISIONS		
No.	Description	Date

**UNIVERSITY OF
NEW ENGLAND**
PORTLAND, MAINE

**ALUMNI HALL
RENOVATION**

**INTERIOR
ELEVATIONS**

Project Number 14525
Date May 03, 2015
Drawn by JP TS SM AR
Checked by LAS

A6.1
Scale AS NOTED