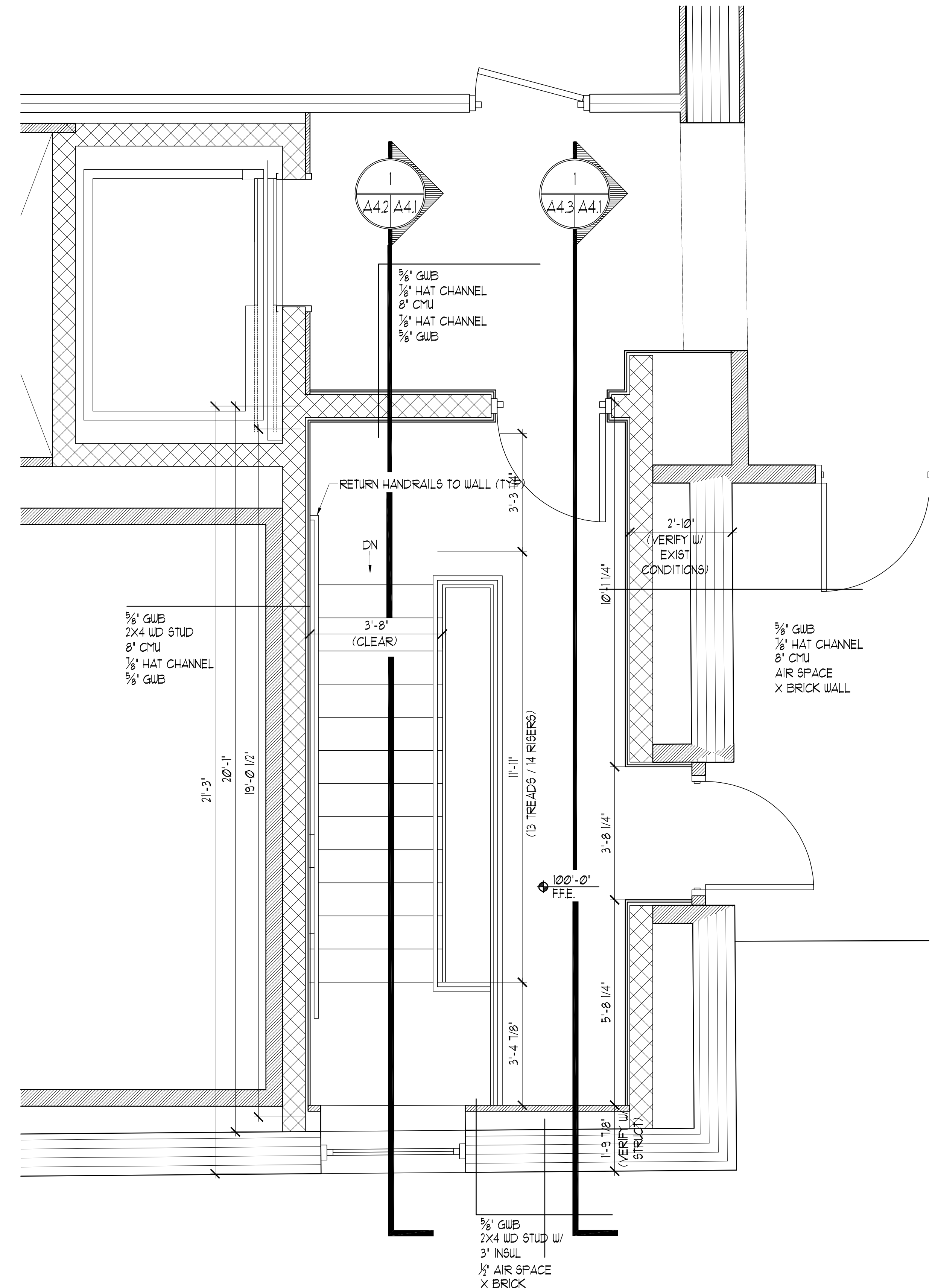


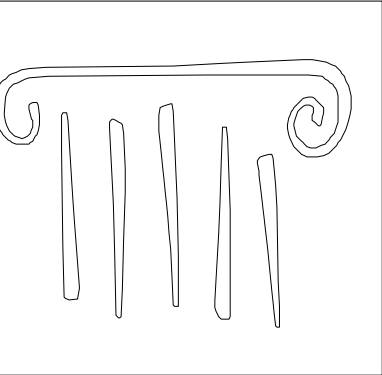
2 LOWER LEVEL STAIR PLAN  
 SCALE: 1/2" = 1'-0"



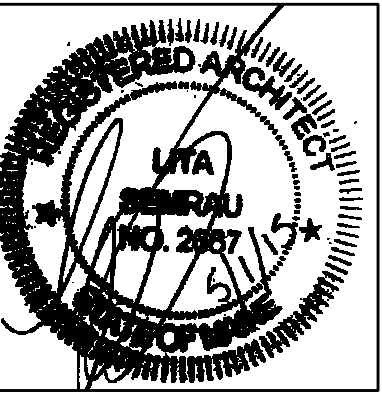
1 GROUND LEVEL STAIR PLAN  
 SCALE: 1/2" = 1'-0"

NOTE:  
 HANDRAILS TO EXTEND 12" HORIZ. AT THE TOP OF ALL STAIR RUNS (MIN.) AND CONTINUE TO SLOPE AT THE BOTTOM OF ALL STAIR RUNS FOR A HORIZ. DISTANCE OF 11" (MIN.), TYP.

NOTE:  
 CONTRACTOR TO VERIFY DIMENSIONS & REPORT TO ARCHITECT FOR COORDINATION PURPOSES



65 NEWBURY STREET  
 PORTLAND, ME 04101  
 207.761.9000  
 info@portcityarch.com  
 WWW.PORTCITYARCH.COM



UNE  
 UNIVERSITY OF  
 NEW ENGLAND

Allied Engineering  
 Structural Mechanical Electrical Consulting

CONSIGLI  
 Est. 1905

BECKER  
 STRUCTURAL ENGINEERS

PERMIT SET

REVISIONS

No.	Description	Date

UNIVERSITY OF  
 NEW ENGLAND  
 PORTLAND, MAINE

ALUMNI HALL  
 RENOVATION

STAIR PLAN

Project Number 14525  
 Date May 01, 2015  
 Drawn by JP TS SM AR  
 Checked by LAS

A4.1

Scale AS NOTED