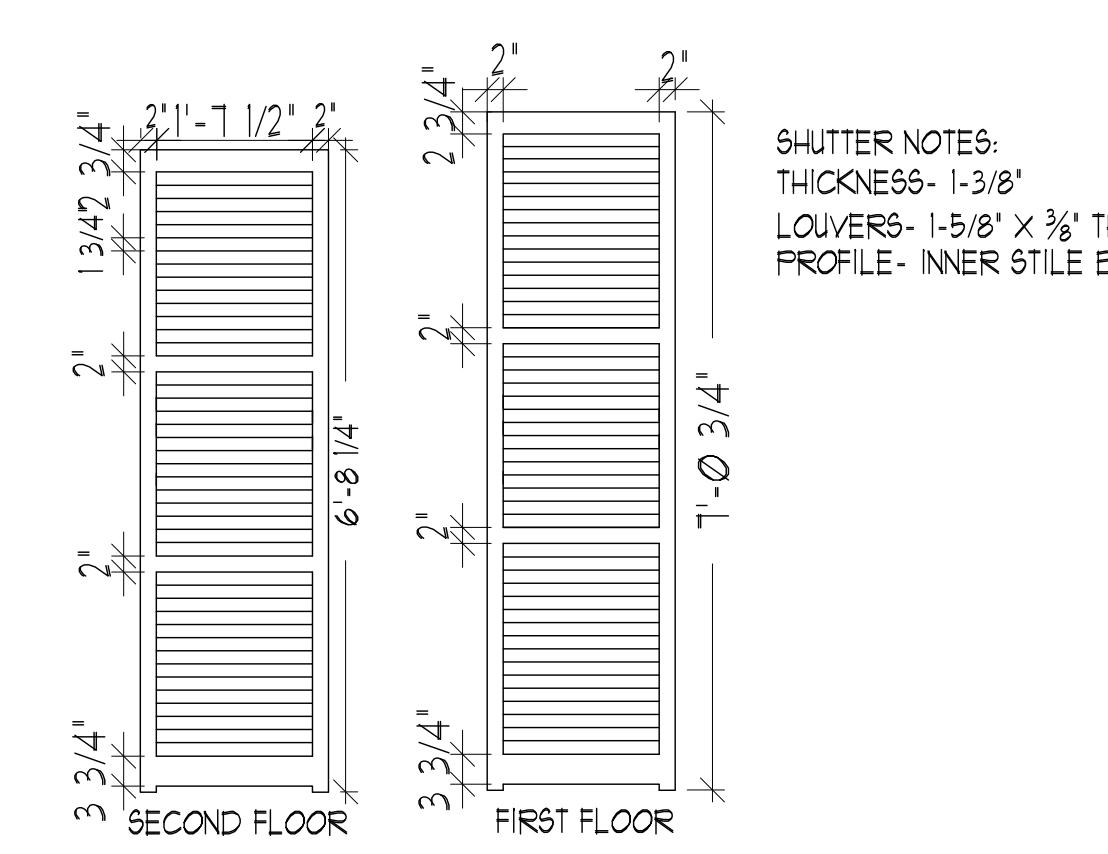
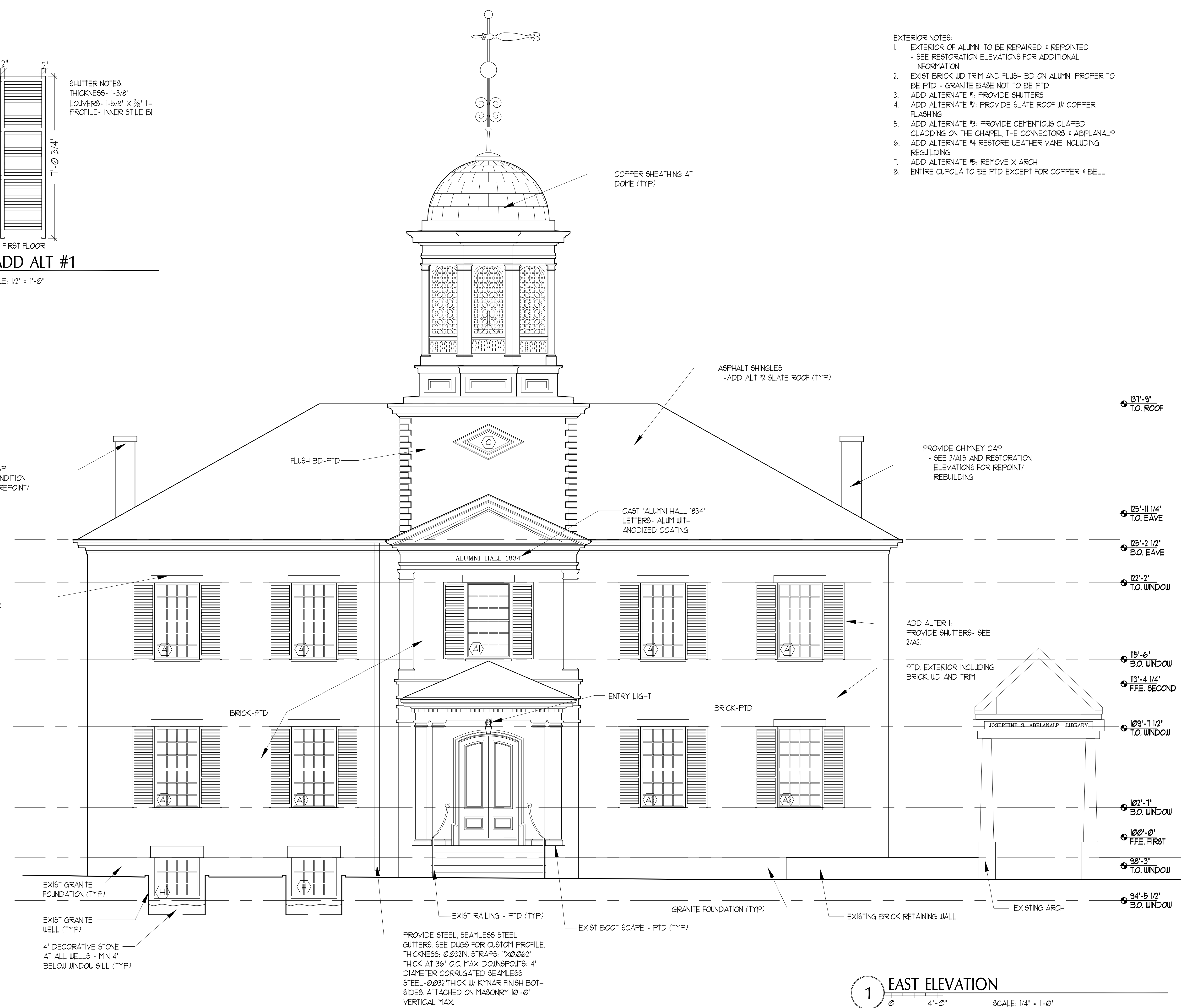


2 SHUTTER DETAIL-ADD ALT #1
 SCALE: 1/2" = 1'-0"



SHUTTER NOTES:
 THICKNESS- 1-3/8"
 LOUVERS- 1-5/8" X 3/8" T-
 PROFILE- INNER STILE BI

- EXTERIOR NOTES:
- EXTERIOR OF ALUMNI TO BE REPAIRED & REPOINTED
 - SEE RESTORATION ELEVATIONS FOR ADDITIONAL INFORMATION
 - EXIST BRICK WD TRIM AND FLUSH BD ON ALUMNI PROPER TO BE PTD - GRANITE BASE NOT TO BE PTD
 - ADD ALTERNATE #1: PROVIDE SHUTTERS
 - ADD ALTERNATE #2: PROVIDE SLATE ROOF W/ COPPER FLASHING
 - ADD ALTERNATE #3: PROVIDE CEMENTIOUS CLAPBD CLADDING ON THE CHAPEL, THE CONNECTORS & ABPLANALP
 - ADD ALTERNATE #4 RESTORE WEATHER VANE INCLUDING REGULDING
 - ADD ALTERNATE #5: REMOVE X ARCH
 - ENTIRE CUPOLA TO BE PTD EXCEPT FOR COPPER & BELL



PROVIDE STEEL, SEAMLESS STEEL GUTTERS. SEE DIAGS FOR CUSTOM PROFILE. THICKNESS: 0.032\"/>

1 EAST ELEVATION
 SCALE: 1/4" = 1'-0"

65 NEWBURY STREET
 PORTLAND, ME 04101
 207.761.9000
 info@portcityarch.com
 WWW.PORTCITYARCH.COM

UNE
 UNIVERSITY OF
 NEW ENGLAND
 Allied Engineering
 Structural Mechanical Electrical Commissioning
 CONSIGLI
 Est. 1905
BECKER
 STRUCTURAL ENGINEERS

PERMIT SET

REVISIONS		
No.	Description	Date

UNIVERSITY OF
 NEW ENGLAND
 PORTLAND, MAINE

**ALUMNI HALL
 RENOVATION**

**EXTERIOR
 ELEVATIONS**

Project Number **14525**
 Date **May 01, 2015**
 Drawn by **JP TS SM AR**
 Checked by **LAS**

A2.1
 Scale AS NOTED