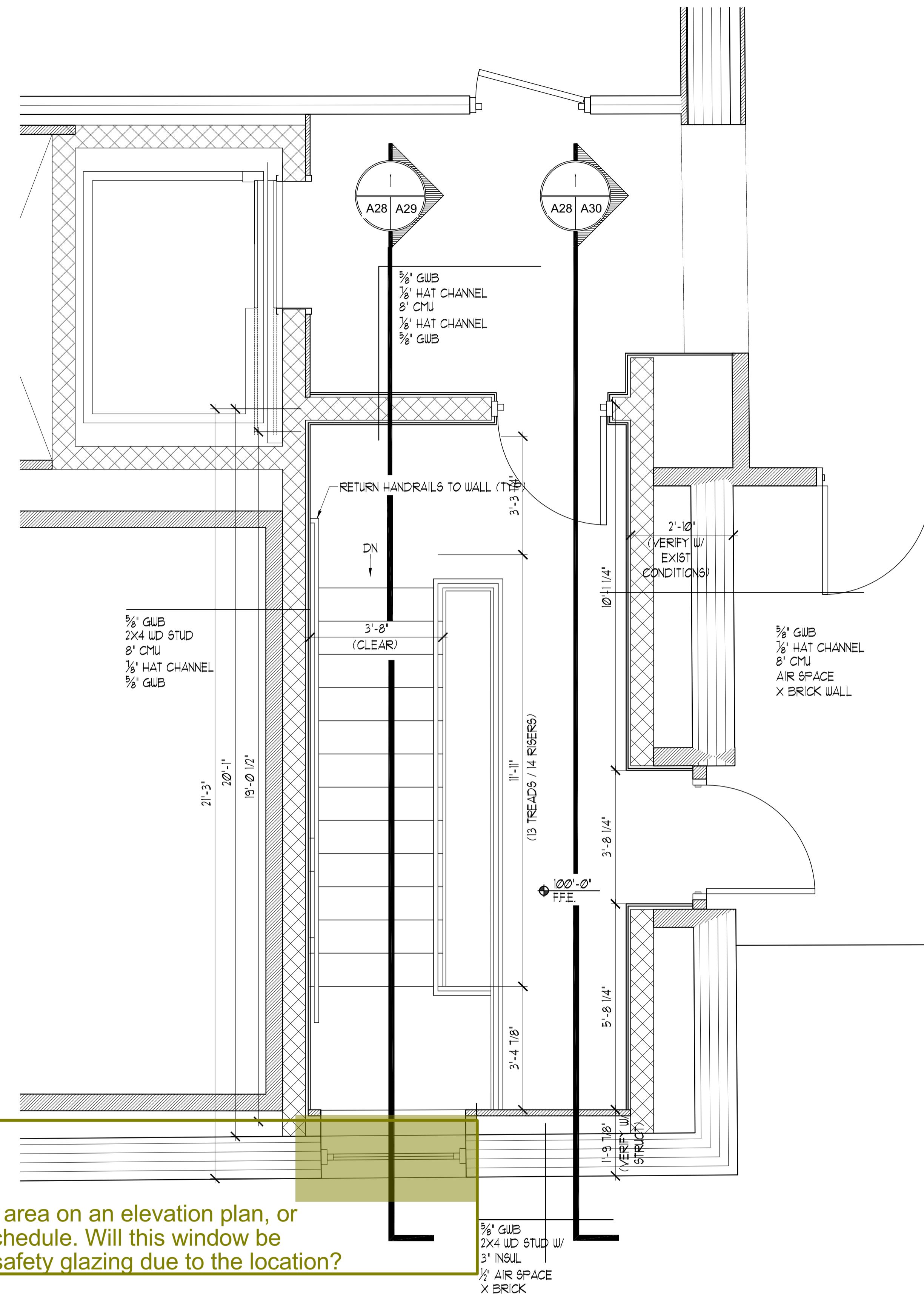


2 LOWER LEVEL STAIR PLAN
SCALE: 1/2" = 1'-0"

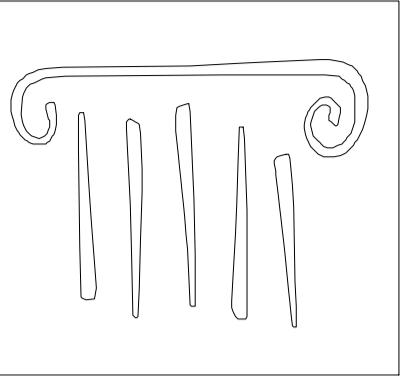


1 GROUND LEVEL STAIR PLAN
SCALE: 1/2" = 1'-0"

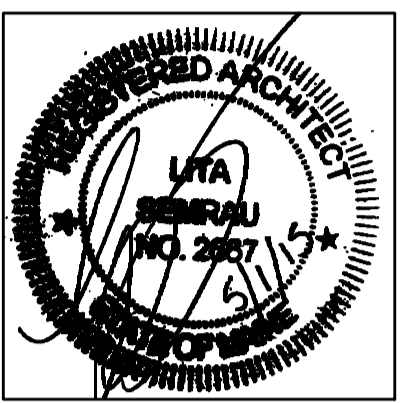
I am not able to find this area on an elevation plan, or details on the window schedule. Will this window be required to be tempered safety glazing due to the location?

NOTE:
HANDRAILS TO EXTEND 12" HORIZ. AT THE TOP OF ALL STAIR RUNS (MIN.) AND CONTINUE TO SLOPE AT THE BOTTOM OF ALL STAIR RUNS FOR A HORIZ. DISTANCE OF 11" (MIN.). TYP.

NOTE:
CONTRACTOR TO VERIFY DIMENSIONS & REPORT TO ARCHITECT FOR COORDINATION PURPOSES



65 NEWBURY STREET
PORTLAND, ME 04101
207.761.9000
info@portcityarch.com
WWW.PORTCITYARCH.COM



UNE
UNIVERSITY OF
NEW ENGLAND

Allied Engineering
Structural Mechanical Electrical Combining

CONSIGLI
Est. 1905

BECKER
STRUCTURAL ENGINEERS

PERMIT SET

REVISIONS		
No.	Description	Date

UNIVERSITY OF
NEW ENGLAND
PORTLAND, MAINE

ALUMNI HALL
RENOVATION

STAIR PLAN

Project Number 14525
Date May 01, 2015
Drawn by JP TS SM AR
Checked by LAS

A28
Scale AS NOTED